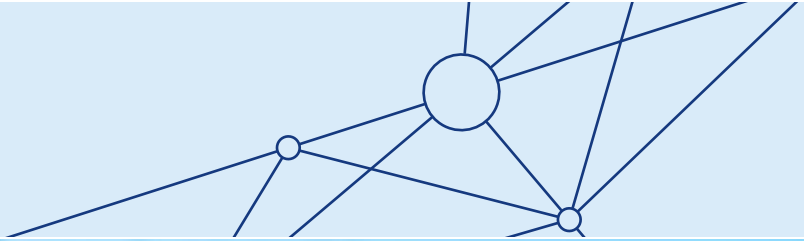


# Regional Digital Connectivity



Community update  
October 2023



## About the Project

The NSW Government committed over \$10 million from the Regional Digital Connectivity program to establish a high-speed Fibre to the Premises (FTTP) internet network in Wamboin, Bywong and Sutton, delivered by Opticomm.

The Wamboin, Bywong and Sutton connectivity project is one of the largest digital infrastructure rollouts for the Monaro and Yass Valley regions and will improve connectivity for over 1400 addresses within these communities.

## Progress Update

The Wamboin, Bywong and Sutton connectivity project is progressing well, despite a number of implementation challenges. Since our last update, Opticomm has worked through multiple stages, and we are pleased to report fibre has been laid into most registered addresses in Sutton Village. In the coming month, the first cluster of addresses in Sutton Village are expected to be eligible to order their internet service (see Stage 6), an exciting milestone for the project.

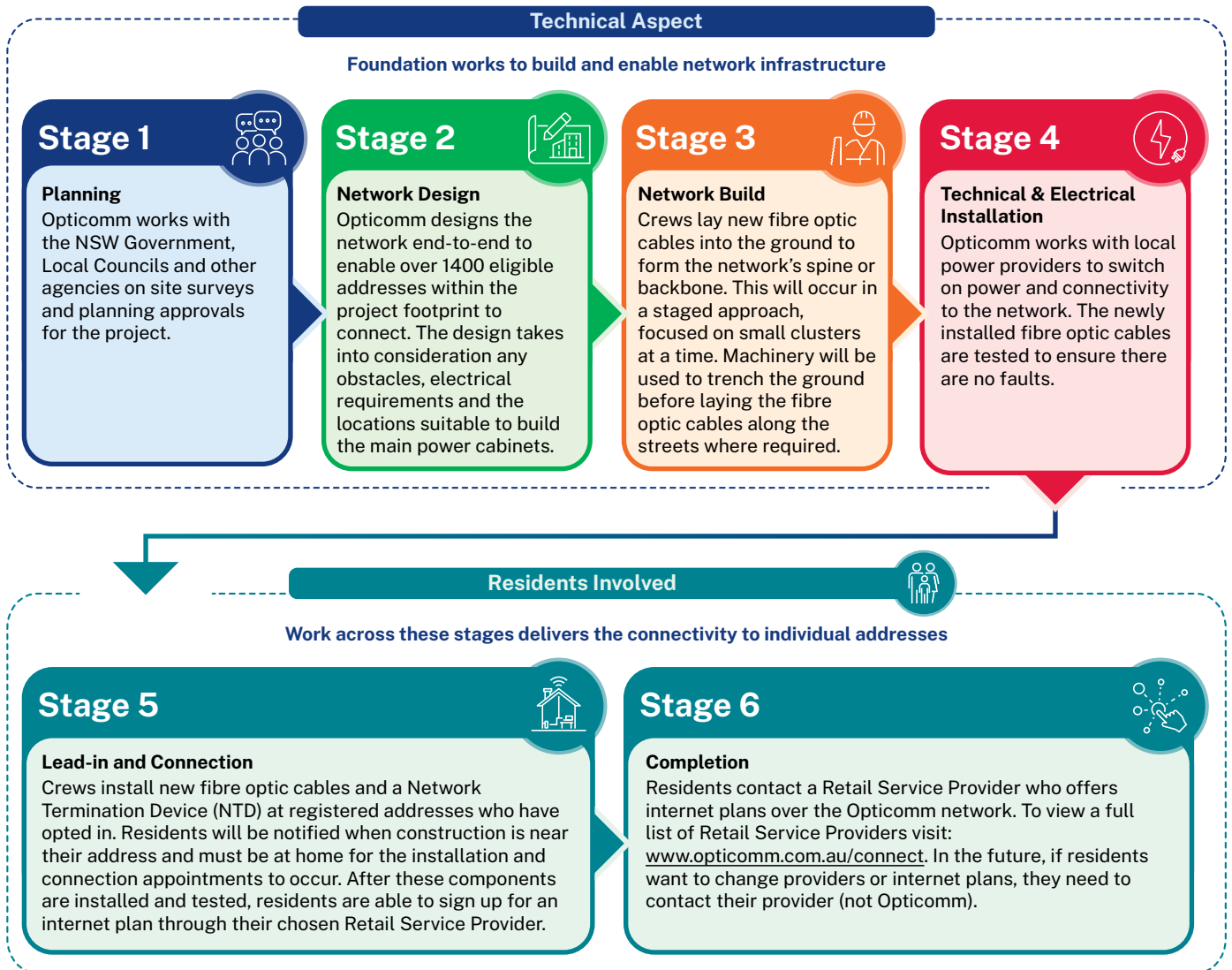
Overall, the construction crews for the rollout have found the terrain and ground conditions in the region challenging, with a higher rock concentration than anticipated.

These conditions have held up construction in some parts, with heavy-duty equipment being deployed to keep the project moving as quickly as possible.

On top of the terrain challenges, Opticomm has spent considerable time sourcing a suitable power supply and establishing connectivity for the network's core switchboard in Sutton, known as a head-end (see Stage 4). These challenges are common in infrastructure projects of this size given the terrain and large acreages in the area.

Residents are advised that the project's completion will go beyond 2023.

We appreciate your patience while the rollout continues.



# Improving internet connectivity for Wamboin, Bywong and Sutton residents

## Register with Opticomm

Residents are reminded to register their contact details with Opticomm as soon as possible via [www.opticomm.com.au/wbs](http://www.opticomm.com.au/wbs). At present, only 55% of addresses included in the rollout have registered. Opticomm requires registration information to contact you and arrange the installation at your home.



- 01 Fibre optic cable being blown with compressed air  
02 Conduits being laid into the ground  
03 Premises connection device

## Frequently Asked Questions

### Is my address included?

Over 1400 addresses in Wamboin, Bywong and Sutton are eligible for connection to Opticomm's FTTP network, which is currently provided **free of charge** for residents, courtesy of funding from the NSW Government.

To check if your address is included, use the address checker tool on Opticomm's website at: [www.opticomm.com.au/wbs](http://www.opticomm.com.au/wbs).

To ensure improved internet connectivity extends to as many addresses as possible within the budget, the project has a one address, one connection policy. Only the primary residence is eligible for the government's funded connection. Residents can choose to connect additional dwellings at their address (i.e. a granny flat) at their own expense by requesting a site feasibility through Opticomm.

### I'm happy with my current internet service. Why should I get the FTTP installed?

Installation of Opticomm's FTTP network at your address is voluntary and currently **free of charge** courtesy of funding from the NSW Government's Wamboin, Bywong and Sutton connectivity project.

Residents who do not register and wish to connect after construction is completed in their area, will be charged for installation.

Choosing to have the fibre installed at your address:

- will not impact your existing phone or internet services
- provides an attractive selling/renting feature; any future occupants can utilise Opticomm's FTTP network to connect to high-speed internet
- provides the flexibility to decide what internet service is right for you at any time in the future.

Once connected to Opticomm's FTTP network, you can enjoy enhanced internet **via your chosen service provider**.

### What are the benefits of a FTTP connection?

The main benefit of internet over FTTP is the high speeds of up to 1 gigabit per second (Gbps\*) which is much higher than the average speed of other broadband internet, such as satellite, cable, ADSL, or wireless options.

Installing FTTP at your home means you can access increased bandwidth, use more devices at the same time with fewer dropouts, and maintain a reliable connection no matter the weather. As internet plans change and when higher speed tiers become available in the future, you'll be able to access and enjoy these enhanced services.

**Once connected to Opticomm's FTTP network, residents will be able to choose a plan and provider to suit their individual needs, with many providers offering plans of up to 1 Gbps.**

Whether you're browsing, studying, working from home, or running a business, Opticomm's FTTP network is built to support your internet needs now, and long into the future.

\*Actual speeds and performance will depend on factors including your service provider, the equipment at your home, chosen plan and design decisions.



### **What are the next steps for eligible addresses?**

Once registered with Opticomm, you will receive project updates and be contacted to arrange your installation and connection appointments.

Updates will be made available on Opticomm's website at: [www.opticomm.com.au/wbs](http://www.opticomm.com.au/wbs) with information about when construction is expected to commence at your address.

Opticomm will also send each registered address an information pack in the mail prior to the rollout reaching your address. For any further details call Opticomm on 1300 035 637.

### **Connect with us**

For more information on this project, visit the NSW Government's Wamboin, Bywong and Sutton project webpage at [www.nsw.gov.au/wbs](http://www.nsw.gov.au/wbs) or contact the Department of Regional NSW at [RDC.program@regional.nsw.gov.au](mailto:RDC.program@regional.nsw.gov.au).

Regional Digital Connectivity  
[RDC.program@regional.nsw.gov.au](http://RDC.program@regional.nsw.gov.au)