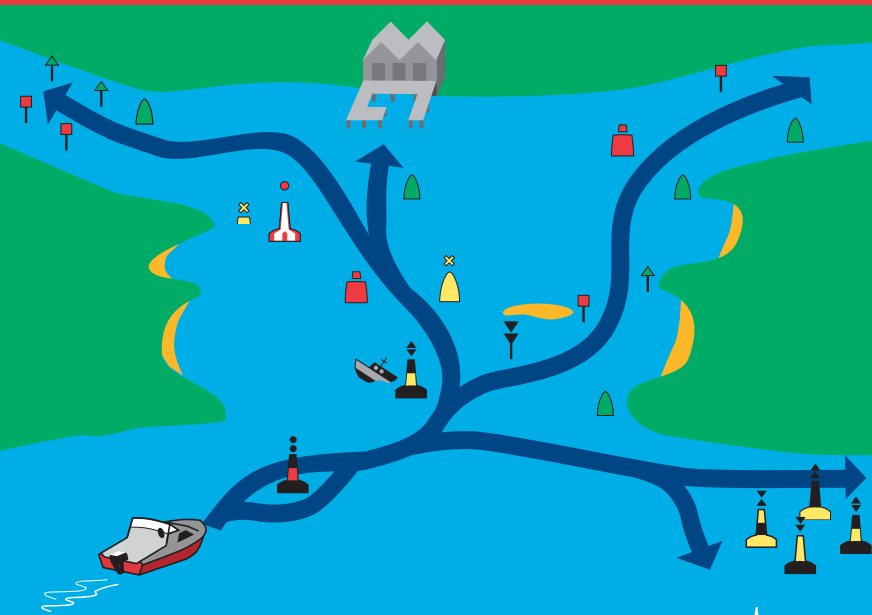


SAFE BOATING – BUOYAGE SYSTEM



PORT MARK
Keep red 'can' shape on left when going upstream, right downstream. Flashing RED light (if lit).

STARBOARD MARK
Keep green 'cone' shape on right when going upstream, left downstream. Flashing GREEN light (if lit).

SPECIAL MARK
Keep yellow 'can' on left when going upstream, right downstream. Keep yellow 'cone' on right upstream, left downstream. Flashing YELLOW light (if lit).

SAFE WATER MARK
Indicates deep water. Flashing WHITE light (if lit).

ISOLATED DANGER MARK
Pass any side but keep well clear. Flashing WHITE light in groups of 2 (if lit).

NORTH CARDINAL MARK
Pass on north side. WHITE light flashing continuously quickly.

SOUTH CARDINAL MARK
Pass on south side. WHITE light 6 quick flashes and one long flash.

EAST CARDINAL MARK
Pass on east side. WHITE light in groups of 3 quick flashes.

WEST CARDINAL MARK
Pass on west side. WHITE light in groups of 9 quick flashes.