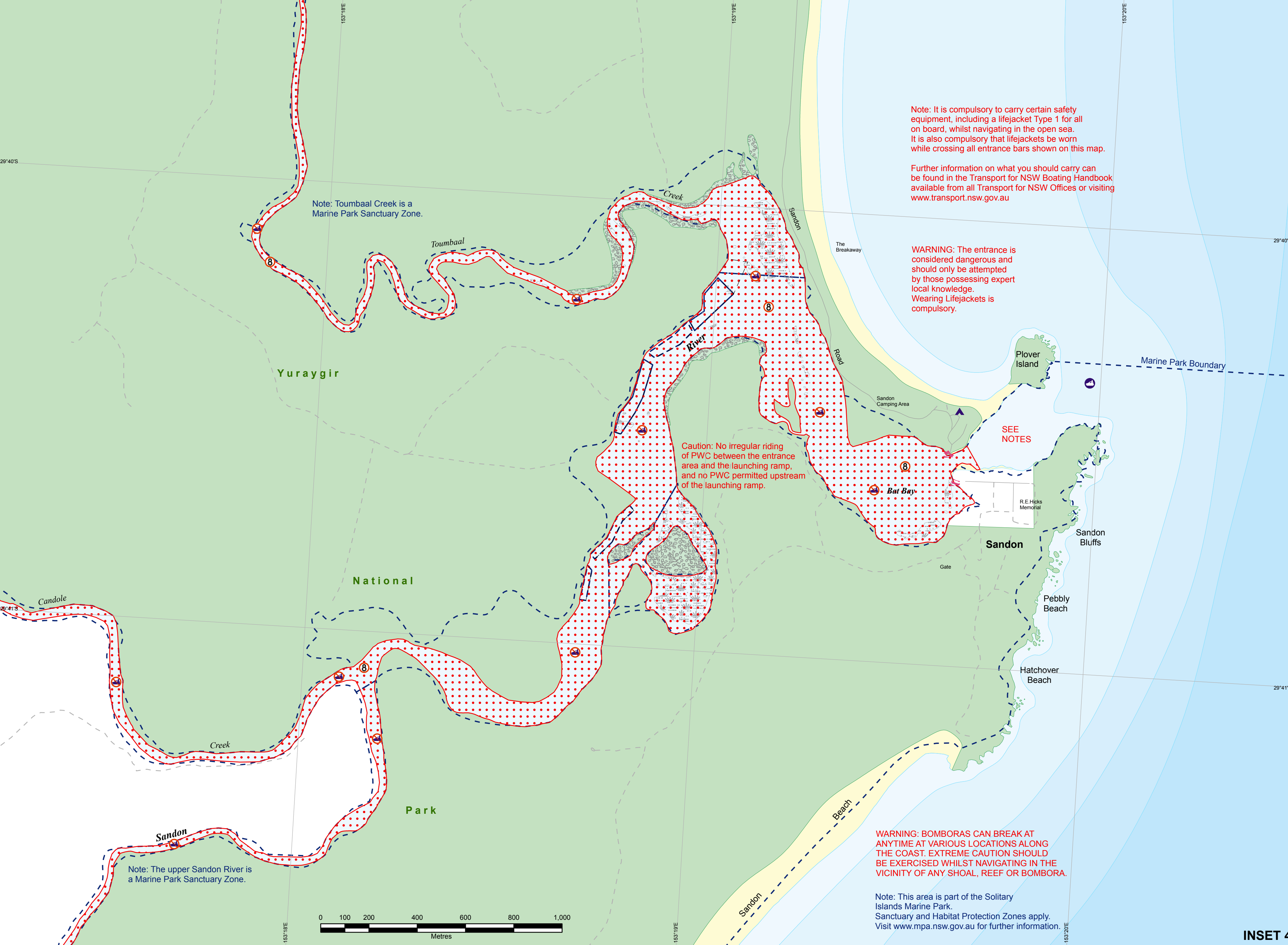
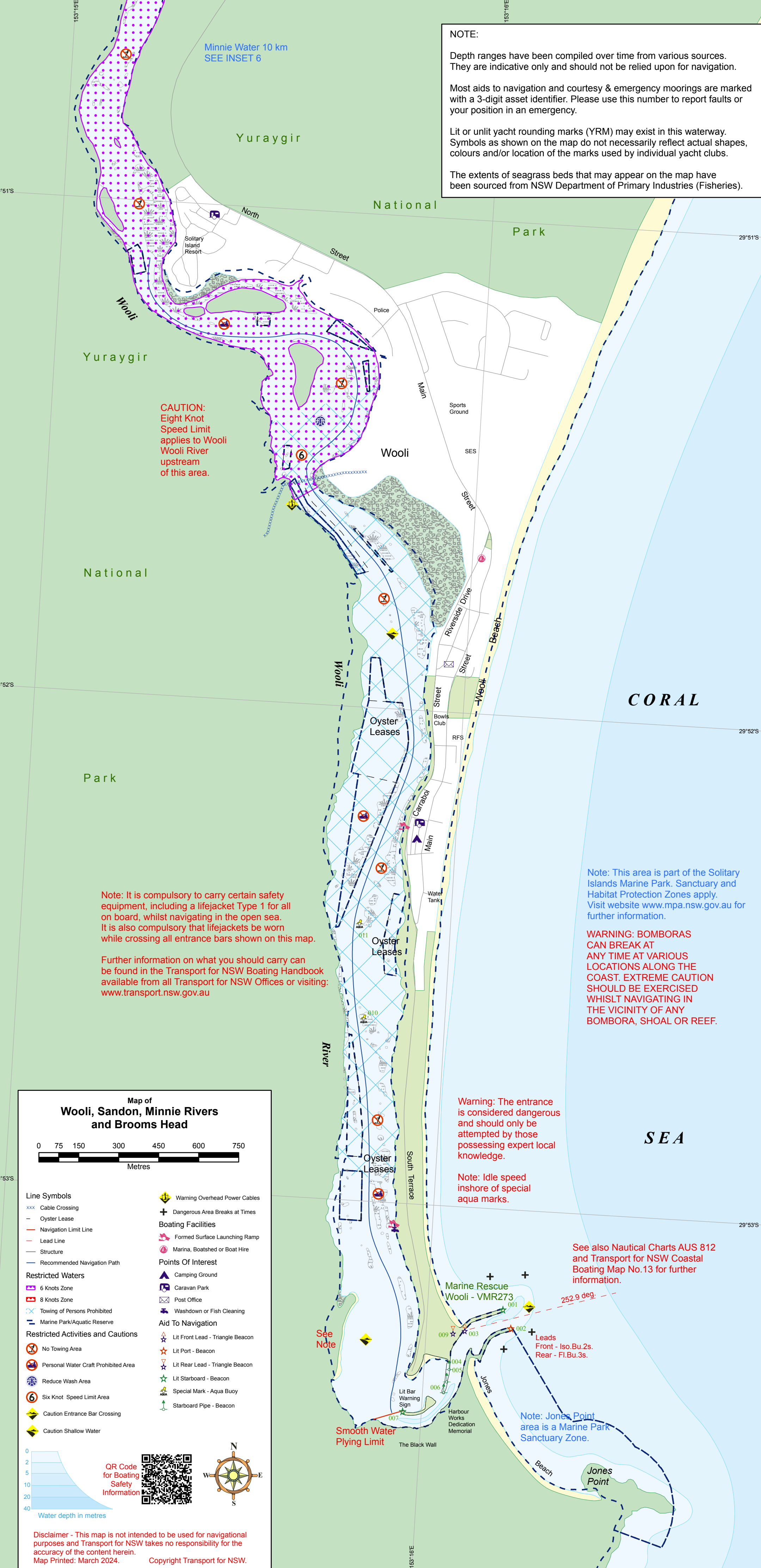
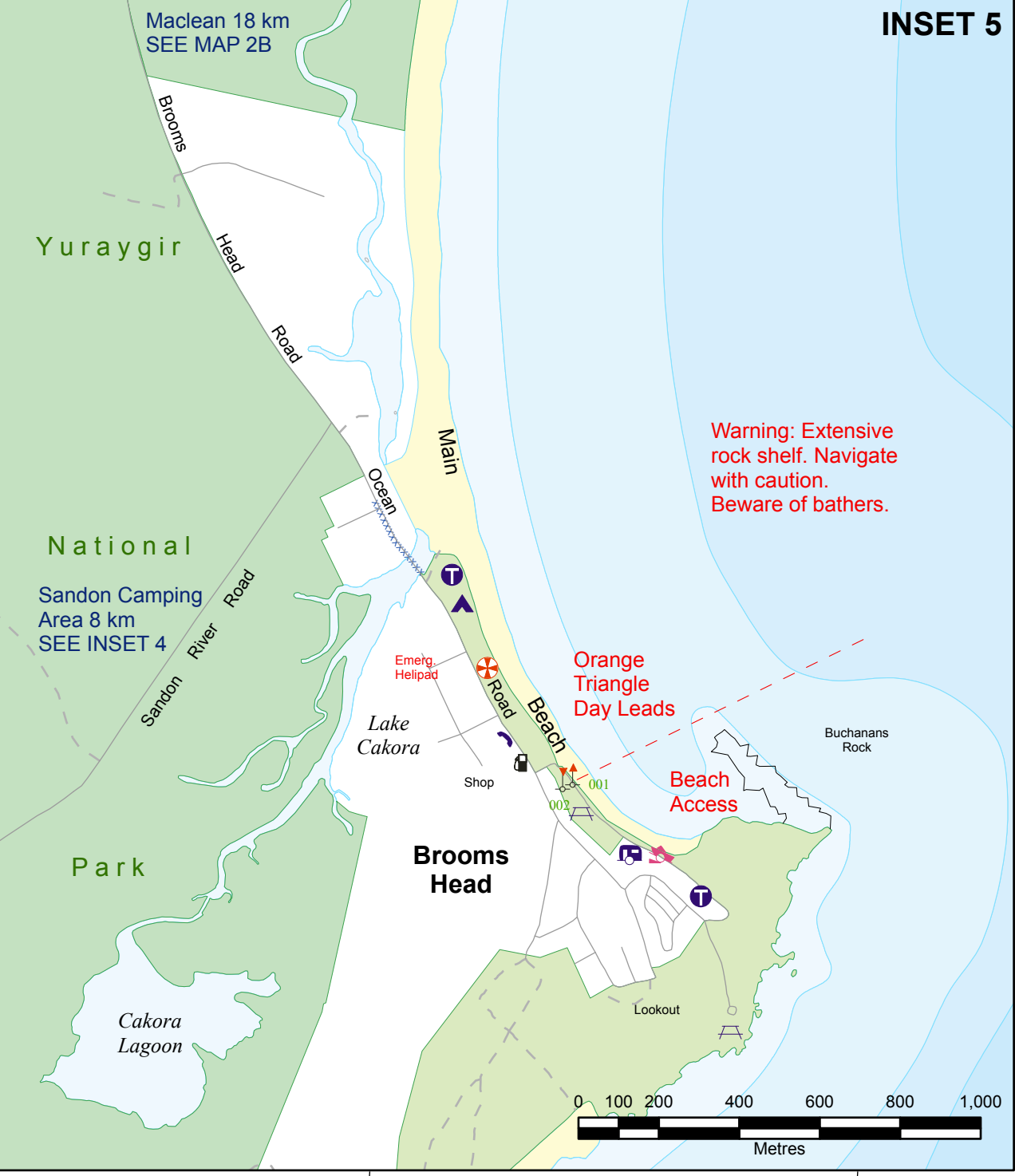


**NOTE:**  
 Depth ranges have been compiled over time from various sources. They are indicative only and should not be relied upon for navigation.  
 Most aids to navigation and courtesy & emergency moorings are marked with a 3-digit asset identifier. Please use this number to report faults or your position in an emergency.  
 Lit or unlit yacht rounding marks (YRM) may exist in this waterway. Symbols as shown on the map do not necessarily reflect actual shapes, colours and/or location of the marks used by individual yacht clubs.  
 The extents of seagrass beds that may appear on the map have been sourced from NSW Department of Primary Industries (Fisheries).



**Map of Woolli, Sandon, Minnie Rivers and Brooms Head**

0 75 150 300 450 600 750 Metres

<b>Line Symbols</b>	Warning Overhead Power Cables
Cable Crossing	Dangerous Area Breaks at Times
Oyster Lease	Boating Facilities
Navigation Limit Line	Formed Surface Launching Ramp
Lead Line	Marina, Boatshed or Boat Hire
Structure	Points Of Interest
Recommended Navigation Path	Camping Ground
<b>Restricted Waters</b>	Caravan Park
6 Knots Zone	Post Office
8 Knots Zone	Washdown or Fish Cleaning
Towing of Persons Prohibited	Aid To Navigation
Marine Park/Aquatic Reserve	Lit Front Lead - Triangle Beacon
<b>Restricted Activities and Cautions</b>	Lit Port - Beacon
No Towing Area	Lit Rear Lead - Triangle Beacon
Personal Water Craft Prohibited Area	Lit Starboard - Beacon
Reduce Wash Area	Special Mark - Aqua Buoy
Lit Bar Warning Sign	Starboard Pipe - Beacon
Six Knot Speed Limit Area	
Caution Entrance Bar Crossing	
Caution Shallow Water	

QR Code for Scaling Safety Information

Water depth in metres

Disclaimer - This map is not intended to be used for navigational purposes and Transport for NSW takes no responsibility for the accuracy of the content herein.  
 Map Printed: March 2024. Copyright Transport for NSW.

Note: This area is part of the Solitary Islands Marine Park. Sanctuary and Habitat Protection Zones apply. Visit website [www.mpa.nsw.gov.au](http://www.mpa.nsw.gov.au) for further information.

**WARNING: BOMBORAS CAN BREAK AT ANY TIME AT VARIOUS LOCATIONS ALONG THE COAST. EXTREME CAUTION SHOULD BE EXERCISED WHILST NAVIGATING IN THE VICINITY OF ANY BOMBORA, SHOAL OR REEF.**

Warning: The entrance is considered dangerous and should only be attempted by those possessing expert local knowledge.

Note: Idle speed inshore of special aqua marks.

See also Nautical Charts AUS 812 and Transport for NSW Coastal Boating Map No.13 for further information.

Note: Jones Point area is a Marine Park Sanctuary Zone.

Note: The upper Sandon River is a Marine Park Sanctuary Zone.

Warning: Extensive rock shelf. Navigate with caution. Beware of bathers.

Warning: Extensive rock shelf. Navigate with caution. Beware of bathers.

Note: This area is part of the Solitary Islands Marine Park. Sanctuary and Habitat Protection Zones apply. Visit website [www.mpa.nsw.gov.au](http://www.mpa.nsw.gov.au) for further information.

Note: It is compulsory to carry certain safety equipment, including a lifejacket Type 1 for all on board, whilst navigating in the open sea. It is also compulsory that lifejackets be worn while crossing all entrance bars shown on this map.

Further information on what you should carry can be found in the Transport for NSW Boating Handbook available from all Transport for NSW Offices or visiting [www.transport.nsw.gov.au](http://www.transport.nsw.gov.au)

**WARNING: The entrance is considered dangerous and should only be attempted by those possessing expert local knowledge. Wearing Lifejackets is compulsory.**

Caution: No irregular riding of PWC between the entrance area and the launching ramp, and no PWC permitted upstream of the launching ramp.

SEE NOTES

**WARNING: BOMBORAS CAN BREAK AT ANY TIME AT VARIOUS LOCATIONS ALONG THE COAST. EXTREME CAUTION SHOULD BE EXERCISED WHILST NAVIGATING IN THE VICINITY OF ANY SHOAL, REEF OR BOMBORA.**

Note: This area is part of the Solitary Islands Marine Park. Sanctuary and Habitat Protection Zones apply. Visit [www.mpa.nsw.gov.au](http://www.mpa.nsw.gov.au) for further information.