

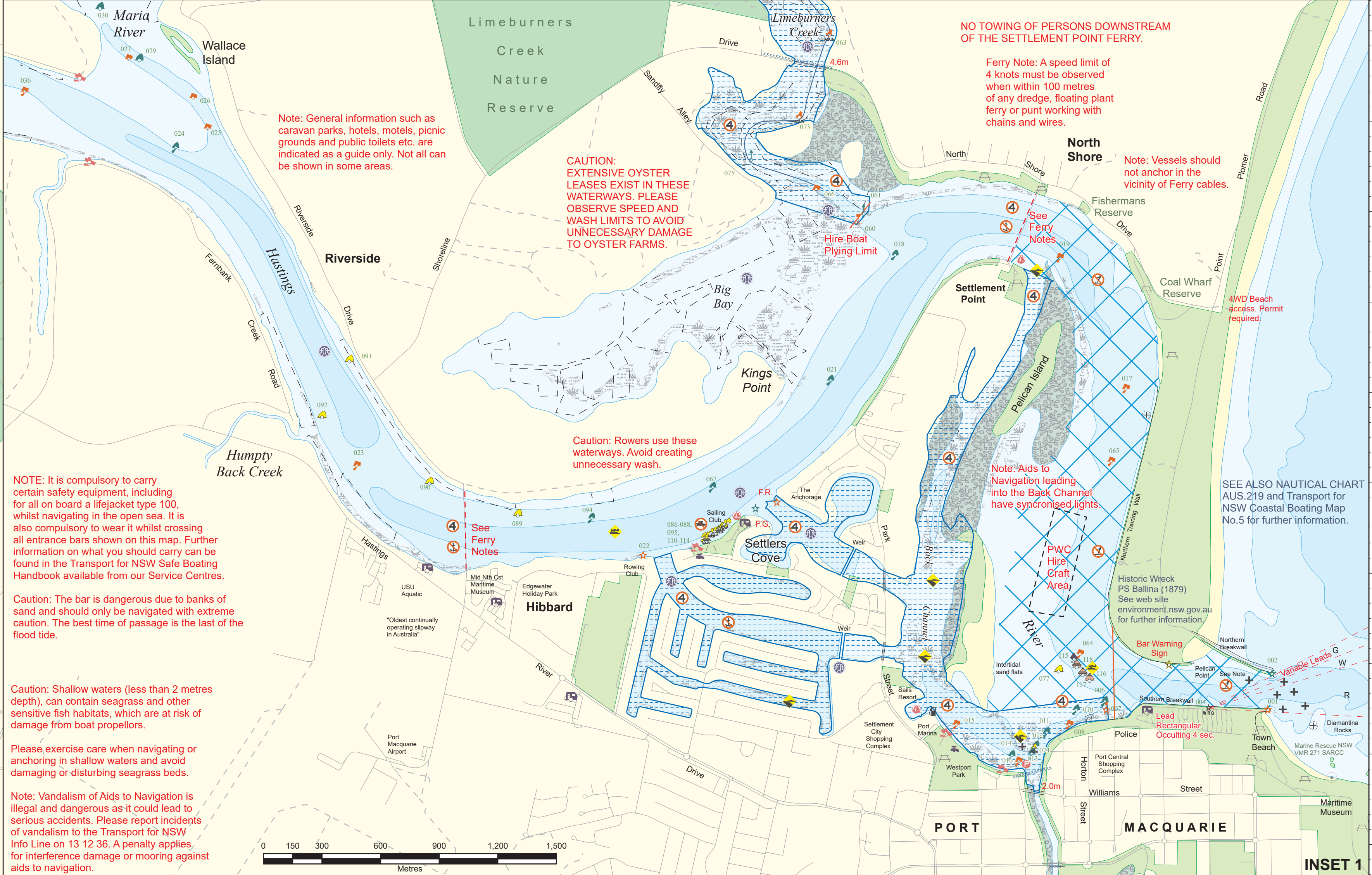
**NOTE:**

Depth ranges have been compiled over time from various sources. They are indicative only and should not be relied upon for navigation.

Most aids to navigation and courtesy & emergency moorings are marked with a 3-digit asset identifier. Please use this number to report faults or your position in an emergency.

Lit or unlit yacht rounding marks (YRM) may exist in this waterway. Symbols as shown on the map do not necessarily reflect actual shapes, colours and/or location of the marks used by individual yacht clubs.

The extents of seagrass beds that may appear on the map have been sourced from NSW Department of Primary Industries (Fisheries).



**Map of Hastings, Wilson and Maria Rivers and Port Macquarie Area**

0 200 400 800 1200 1600 2000 Metres

<b>Line Symbols</b>	Fuel Available
Cable Crossing	Hospital with Emerg Facilities
Oyster Lease	Picnic Ground - Facilities
Structure	Uniformed or Hand Launching Area
Railway	Marina, Boatshed or Boat Hire
Recommended Navigation Path	Public Vessel - Pumpout Facility
Navigation Limit Line	Aid To Navigation
Lead Line	Lit Port Beacon - No Top Mark
<b>Restricted Activities and Cautions</b>	Lit Port Buoy - No Top Mark
Four Knot Speed Limit Area	Lit Side Beacon - No Top Mark
No Towing Area	Lit Side Buoy - No Top Mark
Reduce Wash Area	Port - Aqua Buoy
Caution Shallow Water	Port Buoy - No Top Mark
Caution Submerged Rocks	Port Pile - Beacon with TM
Warning Overhead Power Cables	Port Pipe - Beacon
Sub Surface Obstructions	Sectioned Beacon - White Red Green
<b>Restricted Waters</b>	Special Mark - Aqua Buoy
4 Knots Zone	Starboard - Aqua Buoy
Towing of Persons Prohibited	Starboard Buoy - No Top Mark
<b>Boating Facilities</b>	Starboard Pipe - Beacon
Formed Surface Launching Ramp	
<b>Points of Interest</b>	
Caravan Park	

**QR Code for Boating Safety Information**

**Disclaimer** - This map is not intended to be used for navigational purposes and Transport for NSW takes no responsibility for the accuracy of the content herein.  
Map Printed: April 2025. Copyright Transport for NSW.