

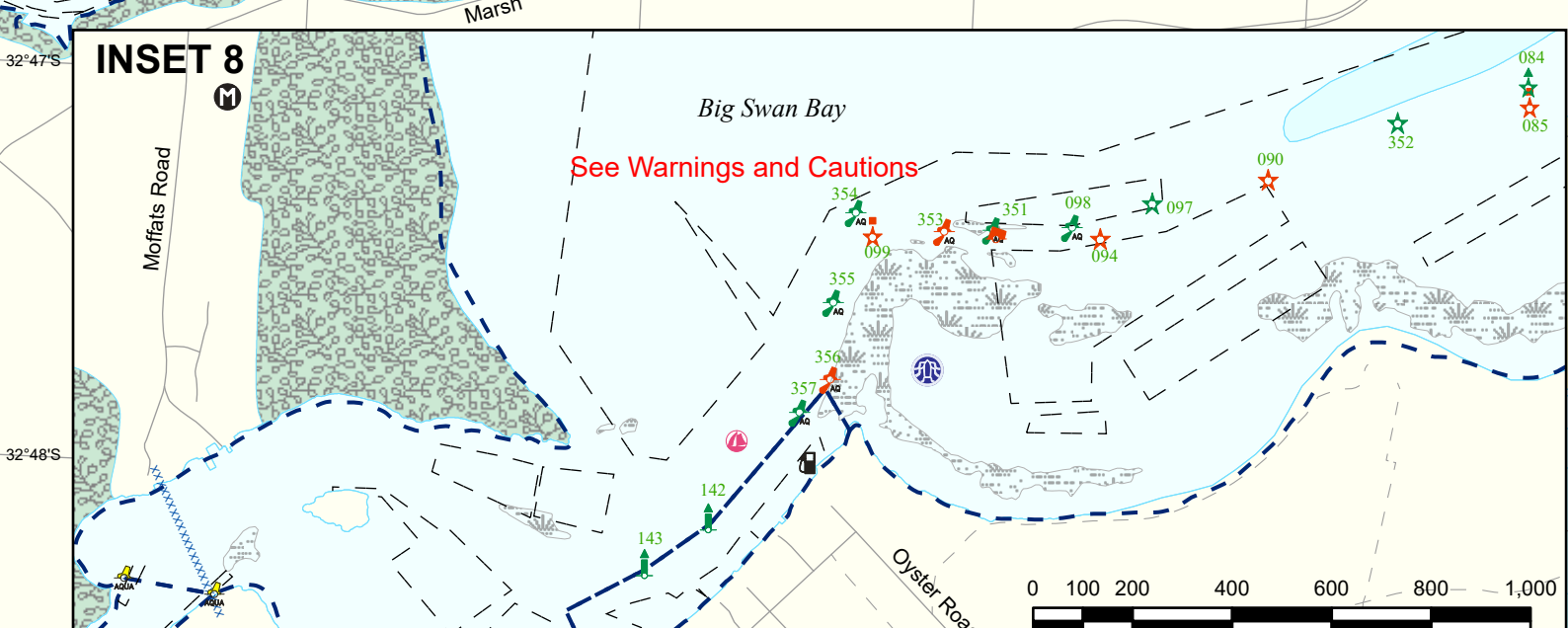
Continues on other side

Jarah Nature Reserve

Medowie State Forest

Note: PSGL Marine Park Sanctuary Zone.

WARNING: Twelve Mile Creek upstream from Moffatts is part of the RAAF Salt Ash Weapons Range and may be periodically closed to navigation.



Caution: Extensive raft oyster leases exist in the waterways of the Karuah River. Please minimise your wash to avoid damage to oyster farms.

NOTE: PORT STEPHENS - GREAT LAKES MARINE PARK
Most waters shown on this map form part of the Port Stephens - Great Lakes Marine Park (PSGL). External boundaries and Sanctuary Zones are shown by BLUE lines. Fishing restrictions apply. Please phone the Marine Authority on 1300 550 474 or visit the web site marine.nsw.gov.au

Note: Lit aids to navigation exhibit standard flash patterns unless otherwise indicated.
Note: Some aids to navigation shown hereon exhibit a 3 digit identifying number. Please use this number to report faulty aids to navigation or your position in an emergency.

SEE INSET 3 OTHER SIDE

Note: PSGL Marine Park Sanctuary Zone.

Note: Bundabah Creek is navigable for small craft.

Note: PSGL Marine Park Sanctuary Zone.

See Oyster Lease Caution

Caution: Shallow waters (less than 2 metres deep) contain seagrass and other sensitive fish habitats which are at risk of damage from boat propellers. Please exercise care when navigating or anchoring in shallow waters and avoid damaging or disturbing these habitats.

WARNING: OVERHEAD AND SUBMARINE CABLES AND PIPES CROSS THESE WATERWAYS AT VARIOUS LOCATIONS AND ARE USUALLY INDICATED BY WARNING NOTICES ON THE SHORE. CAUTION SHOULD BE EXERCISED AT ALL TIMES WHILE NAVIGATING IN THE VICINITY OF THESE CROSSINGS.

SEE INSET 2 OTHER SIDE

Note: Vandals of aids to navigation is illegal and dangerous as it could lead to serious accidents. Please report incidents of vandalism to Transport for NSW Info Line on 13 12 36. Penalties apply for interference, damage or mooring against aids to navigation.

WARNING: BOMBORAS CAN BREAK AT ANYTIME AT VARIOUS LOCATIONS ALONG THE COAST. EXTREME CAUTION SHOULD BE EXERCISED WHILST NAVIGATING IN THE VICINITY OF ANY SHOAL, REEF OR BOMBORA.

Note: Launching ramps shown at Boat Harbour, Fingal and Fishermans Bays are natural beaches. Calm conditions and four wheel drive is recommended. Open Waters Regulations apply.

WARNING: OVERHEAD AND SUBMARINE CABLES AND PIPES CROSS THESE WATERWAYS AT VARIOUS LOCATIONS AND ARE USUALLY INDICATED BY WARNING NOTICES ON THE SHORE.

CAUTION SHOULD BE EXERCISED AT ALL TIMES WHILE NAVIGATING IN THE VICINITY OF THESE CROSSINGS.

NOTE: Disposal of toilet waste into the waterway is prohibited on the Myall Lakes System. Currently a waste disposal vessel, the Independence (maritime radio frequency 27.88MHz, or phone 0417 621 122) cruises the System on weekend and holidays. All waterway users are requested to utilise the vessel for waste disposal.

A self serve public vessel pumpout facility is also available free of charge at Myall Shores public wharf (see inset 2) and the Transport for NSW Jetty at Tea Gardens.

Marine Engine breakdown assistance (24 hours) is available. Telephone 0418 499 750 for information.

NOTE: Strong tidal flows occur in the Myall River between Tamboy and Corrie Island.

Note: General information such as caravan parks, hotels, motels, picnic grounds and public toilets etc. are indicated as a guide only. Not all can be shown in some areas.

CAUTION: Oyster leases are an extensive feature of Port Stephens and the Lower Myall River. Please minimise your wash to avoid damage to oyster farms and be aware of submerged hazards in areas that they appear to have been removed.

Note: A number of unit orange spar yacht rounding marks (YRM) exist in various locations on this map. They are often moved around to suit specific race or weather conditions.

Caution: Lower Myall River and Corrie Creek is prone to shoaling. Navigate with extreme caution at low tide.

SEE INSET 1 OTHER SIDE.

SEE CAUTIONS

Dir.Iso.WRG.4s (aux. Iso.W.2s.)

See Note on Inset.

Note: This part of PSGL Marine Park Sanctuary Zone is subject to a four knot speed limit due to dolphin activity.

SEE INSET 4 OTHER SIDE

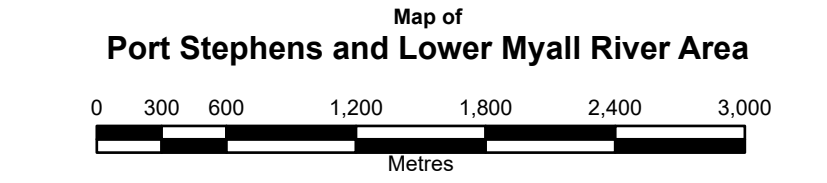
This area classified as Limited Open Waters. SEE NOTE ABOVE

Transition Line 257 deg. 19 min.

White Sector Lead Line 292-295 deg.

Open Waters Limit

CAUTION: Navigating the entrance to Port Stephens can be dangerous during runoff tides.



Line Symbols	Aids to Navigation
--- Cable Crossing	✠ East Cardinal - Can Buoy
--- Structure	✠ Lit East Cardinal - Can Buoy
--- Oyster Lease	✠ Lit Iso Danger - Can Buoy
--- Lead Line	✠ Lit North Cardinal - Can Buoy
--- Sector Line	✠ Lit Port - Aqua Buoy
--- Restricted Waters	✠ Lit Port - Beacon with Top Mark
--- 4 Knots Zone	✠ Lit Port Buoy
--- 8 Knots Zone	✠ Lit Special Mark - Can Buoy
--- Restricted Activities and Cautions	✠ Lit Special Mark - Conical Buoy
--- Direction Of Buoyage	✠ Lit Starboard - Aqua Buoy
--- 8 Knot Speed Limit Area	✠ Lit Starboard - Beacon with Top Mark
--- 4 Knot Speed Limit Area	✠ Lit Starboard - Buoy
--- No Anchoring - Submarine Cable	✠ Lit South Cardinal - Can Buoy
--- No Towing Area	✠ Lit West Cardinal - Can Buoy
--- Reduce Wash Area	✠ Lit Yellow - Aqua Buoy
--- Boating Facilities	✠ Lit East - Cardinal beacon
--- Formed Surface Launching Ramp	✠ Lit Iso Danger - Beacon
--- Unformed or Hand Launching Area	✠ Lit Lead - Oblong Beacon
--- Marina, Boatshed or Boat Hire	✠ Lit North - Cardinal Beacon
--- Blue Beehive Emerg Police	✠ Lit Port - Beacon
--- Pink AB1300 Public Mooring	✠ Lit South - Cardinal Beacon
--- Pink Beehive Public Mooring	✠ Lit Starboard - Beacon
--- Private Vessel - Pumpout Facility	✠ Lit West Cardinal - Beacon
--- Public Vessel - Pumpout Facility	✠ Port - Aqua Buoy
--- General Information	✠ Port Buoy
--- Camping - Ground	✠ Port Pile - Beacon with Top Mark
--- Caravan - Park	✠ Port Pipe - Beacon
--- Dinghy Rack	✠ Sector Beacon - White Red Green
--- Fishing Platform - or Artificial Reef	✠ Special Mark - Aqua Buoy
--- Fuel Available	✠ Special Mark - Can Buoy
--- Hospital with - Emerg Facilities	✠ Starboard - Aqua Buoy
--- Known Medical - Evacuation Area	✠ Starboard Buoy
--- Picnic Ground - Facilities	✠ Starboard Pile - Beacon with Top Mark
--- Public Toilet or - Amenities Block	✠ Starboard Pipe - Beacon
--- Washdown or - Fish Cleaning	✠ South Cardinal - Can Buoy
--- Wheelchair - Access	

NSW GOVERNMENT

QR code for Boating Safety Information

Seagrass

North

Disclaimer - This map is not intended to be used for navigational purposes and Transport for NSW takes no responsibility for the accuracy of the content herein. Map produced on the Geocentric Datum of Australia 2020 (GDA2020). Map Printed: May 2024. Copyright Transport for NSW.

NOTE:
Depth ranges have been compiled over time from various sources. They are indicative only and should not be relied upon for navigation.

Most aids to navigation and courtesy & emergency moorings are marked with a 3-digit asset identifier. Please use this number to report faults or your position in an emergency.

Lit or unit yacht rounding marks (YRM) may exist in this waterway. Symbols as shown on the map do not necessarily reflect actual shapes, colours and/or location of the marks used by individual yacht clubs.

The extents of seagrass beds that may appear on the map have been sourced from NSW Department of Primary Industries (Fisheries).