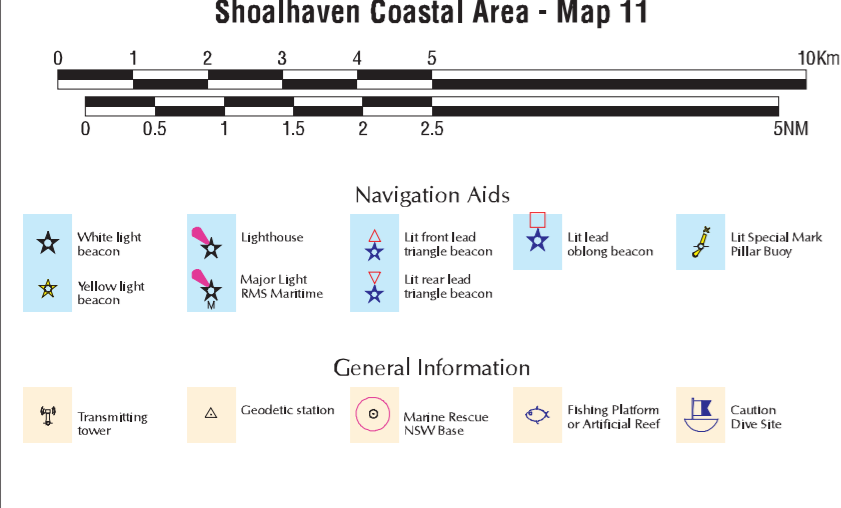


MAP OF Shoalhaven Coastal Area - Map 11



Scale: 0, 0.5, 1, 1.5, 2, 2.5, 5, 10km
Scale: 0, 0.5, 1, 1.5, 2.5, 5, 10NM

Navigation Aids

- White light beacon
- Red light beacon
- Major light buoy
- Minor light buoy
- Front light
- Side light
- Back light
- Red front light
- Red side light
- Red back light
- Yellow front light
- Yellow side light
- Yellow back light
- Red front light
- Red side light
- Red back light
- Yellow front light
- Yellow side light
- Yellow back light
- Red front light
- Red side light
- Red back light
- Yellow front light
- Yellow side light
- Yellow back light
- Red front light
- Red side light
- Red back light
- Yellow front light
- Yellow side light
- Yellow back light
- Red front light
- Red side light
- Red back light
- Yellow front light
- Yellow side light
- Yellow back light

General Information

- Communication tower
- Weather station
- Marine Rescue NSW Base
- Fishing Platform or Artificial Reef
- Caution Under Tension

NOTES

Depth contours are in metres. Heights shown in brackets are in metres above mean high water. Grid datum is the Geocentric Datum of Australia 1994, which is approximately equivalent to WGS-84.

Transport Roads & Maritime Services

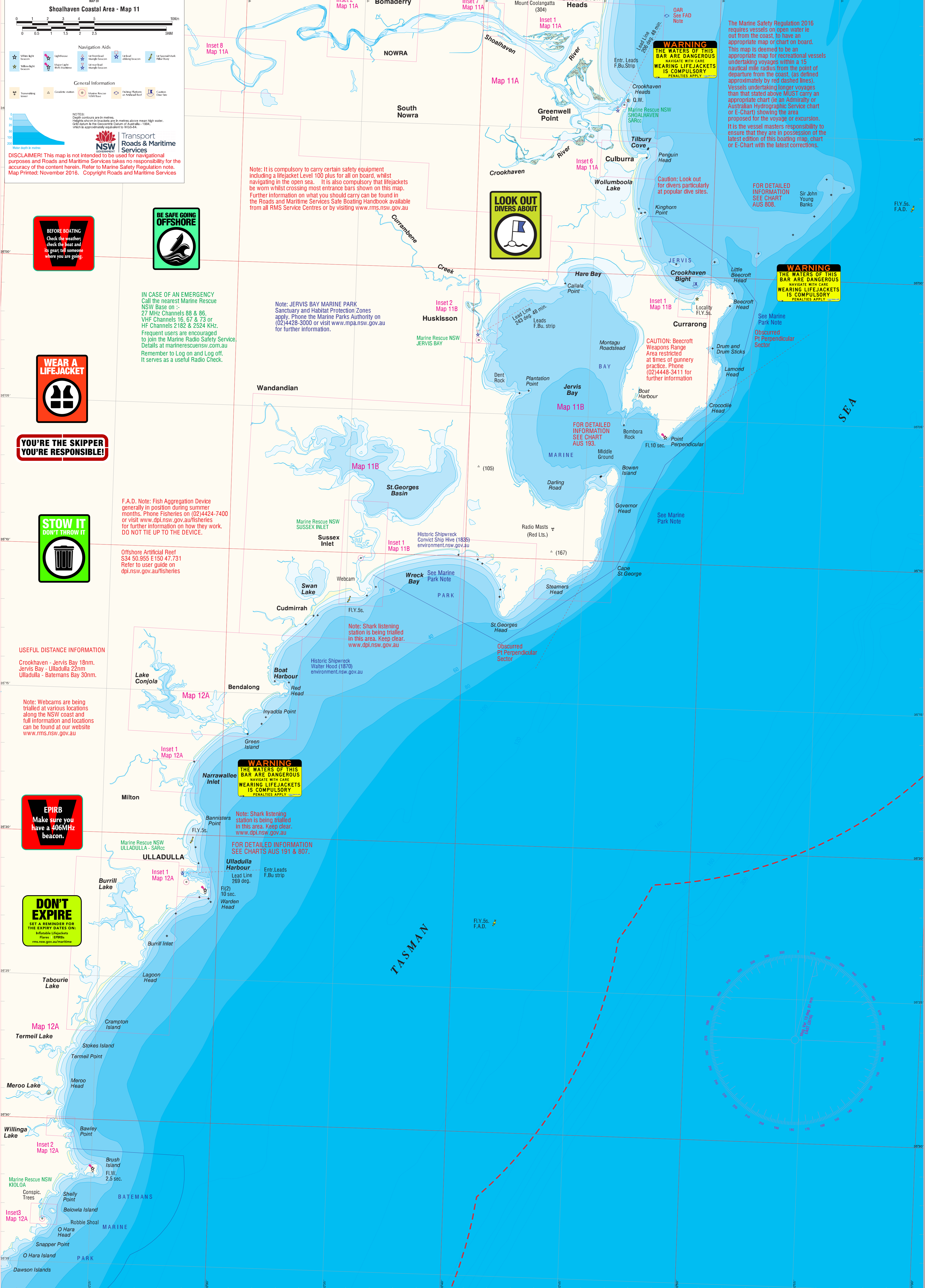
DISCLAIMER! This map is not intended to be used for navigational purposes and Roads and Maritime Services takes no responsibility for the accuracy of the content herein. Refer to Marine Safety Regulation note. Map Printed: November 2016. Copyright Roads and Maritime Services



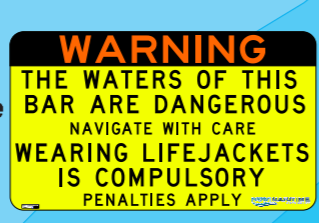
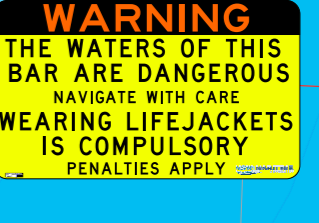
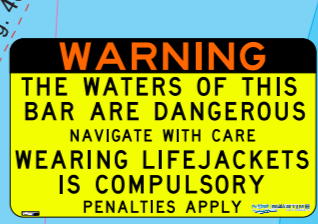
USEFUL DISTANCE INFORMATION

Crookhaven - Jervis Bay 18nm.
Jervis Bay - Ulladulla 22nm.
Ulladulla - Batemans Bay 30nm.

Note: Webcams are being trialled at various locations along the NSW coast and full information and locations can be found at our website www.rms.nsw.gov.au



Note: It is compulsory to carry certain safety equipment including a lifejacket Level 100 plus for all on board, whilst navigating in the open sea. It is also compulsory that lifejackets be worn whilst crossing most entrance bars shown on this map. Further information on what you should carry can be found in the Roads and Maritime Services Safe Boating Handbook available from all RMS Service Centres or by visiting www.rms.nsw.gov.au



Note: Shark listening station is being trialled in this area. Keep clear. www.dpi.nsw.gov.au

FOR DETAILED INFORMATION SEE CHARTS AUS 191 & 807.

The Marine Safety Regulation 2016 requires vessels on open water to leave out from the coast, to have an appropriate map or chart on board. This map is deemed to be an appropriate map for recreational vessels undertaking voyages within a 15 nautical mile radius from the point of departure from the coast, (as defined approximately by red dashed lines). Vessels undertaking longer voyages than that stated above MUST carry an appropriate chart (i.e. an Admiralty or Australian Hydrographic Service chart or E-Chart) showing the area proposed for the voyage or excursion. It is the vessel masters responsibility to ensure that they are in possession of the latest edition of this boating map, chart or E-Chart with the latest corrections.

FOR DETAILED INFORMATION SEE CHART AUS 808.

CAUTION: Beecroft Weapons Range Area restricted at times of gunnery practice. Phone (02)4448-3411 for further information

FOR DETAILED INFORMATION SEE CHART AUS 193.

Note: JERVIS BAY MARINE PARK Sanctuary and Habitat Protection Zones apply. Phone the Marine Parks Authority on (02)4428-3000 or visit www.mpa.nsw.gov.au for further information.

IN CASE OF AN EMERGENCY
Call the nearest Marine Rescue NSW Base on: 27 MHz Channels 88 & 86, VHF Channels 16, 67 & 73 or HF Channels 2182 & 2524 KHz. Frequent users are encouraged to join the Marine Radio Safety Service. Details at marinerescuensw.com.au. Remember to Log on and Log off. It serves as a useful Radio Check.

F.A.D. Note: Fish Aggregation Device generally in position during summer months. Phone Fisheries on (02)4424-7400 or visit www.dpi.nsw.gov.au/fisheries for further information on how they work. DO NOT TIE UP TO THE DEVICE.

Offshore Artificial Reef S34 50.955 E150 47.731 Refer to user guide on dpi.nsw.gov.au/fisheries

Note: Shark listening station is being trialled in this area. Keep clear. www.dpi.nsw.gov.au

Historic Shipwreck Convict Ship HIVE (1835) environment.nsw.gov.au

Historic Shipwreck Walter Hood (1870) environment.nsw.gov.au

Historic Shipwreck Convict Ship HIVE (1835) environment.nsw.gov.au

