

MAP OF Wagonga Inlet, Mummuga Lake and Montague Island Area

Scale: 0 100 200 300 400 500 1000 m

Line symbols

- Overhead Cable Crossing
- Structure
- Oyster Lease
- Recommended Navigation Path

Restricted Waters

- 4 Knot Zone
- 8 Knot Zone
- No Sailing or Anchoring

Navigation Aids

- Northward Buoys
- Port Light
- Starboard Light
- Red Buoy
- Green Buoy
- Yellow Buoy
- Black Buoy
- White Buoy
- Black and Red Buoy
- Black and Green Buoy
- White Buoy with Black Top
- Black Buoy with White Top
- Red Buoy with White Top
- Green Buoy with White Top
- Black Buoy with Red Top
- Black Buoy with Green Top
- Black Buoy with White Top
- White Buoy with Red Top
- White Buoy with Green Top
- Black Buoy with Red Top
- Black Buoy with Green Top

Restricted Activities and Cautions

- Dangerous Area: Breaks at Tides
- Caution: Rocks/Weir
- No Mesh Zone
- Four Knot Speed Limit Area
- Eight Knot Speed Limit Area
- Warning: Overhead Power Cables
- Caution: Entrance Bar Crossing
- Caution: Submerged Rocks
- No Anchoring/Underway Cable

Boating Facilities

- Unattended or Hand Launching Ramps
- Powered/Manual Launching Ramps
- Launch Ramp
- Mooring Facilities
- Public: Mooring/Anchorage
- Public: Mooring/Anchorage

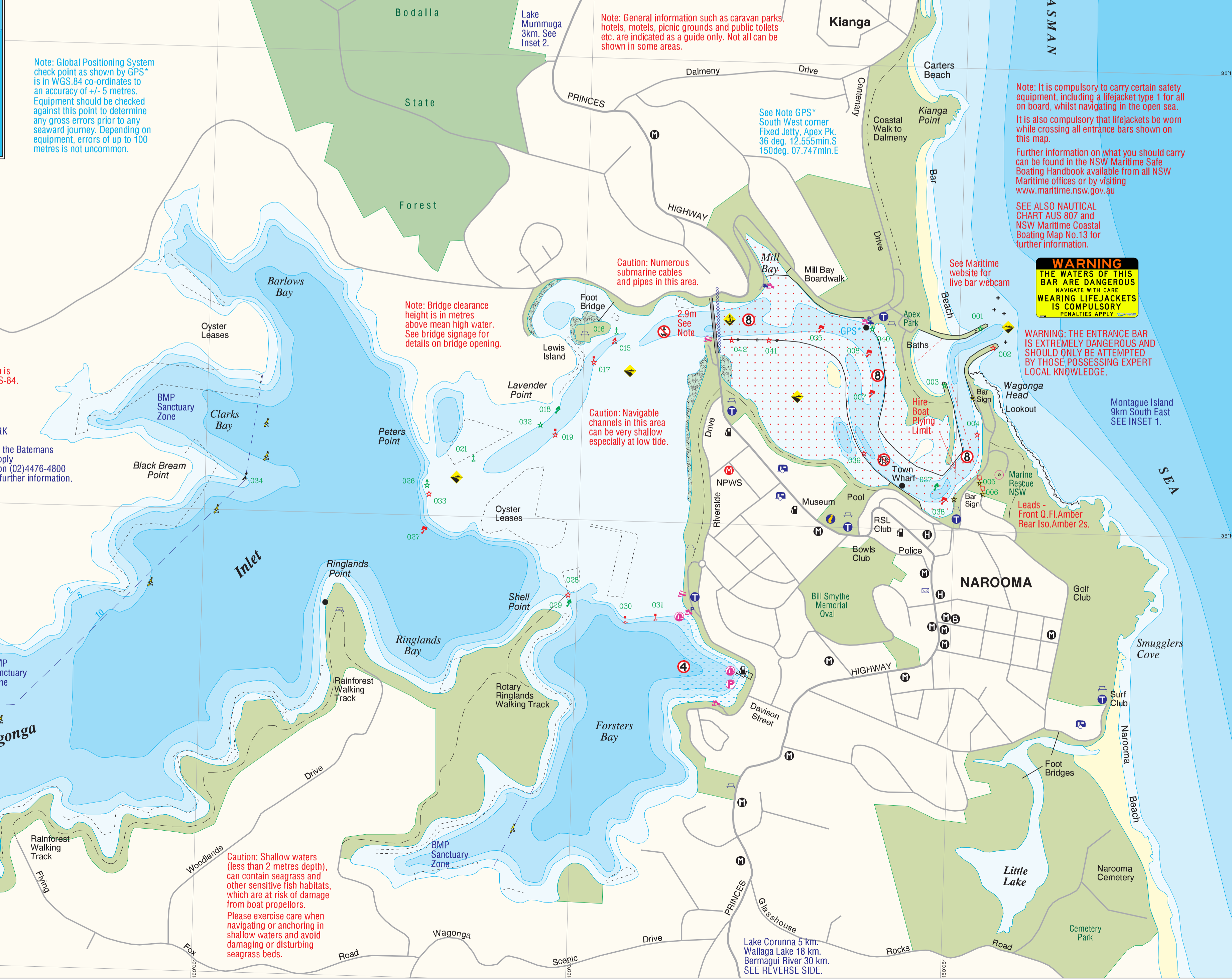
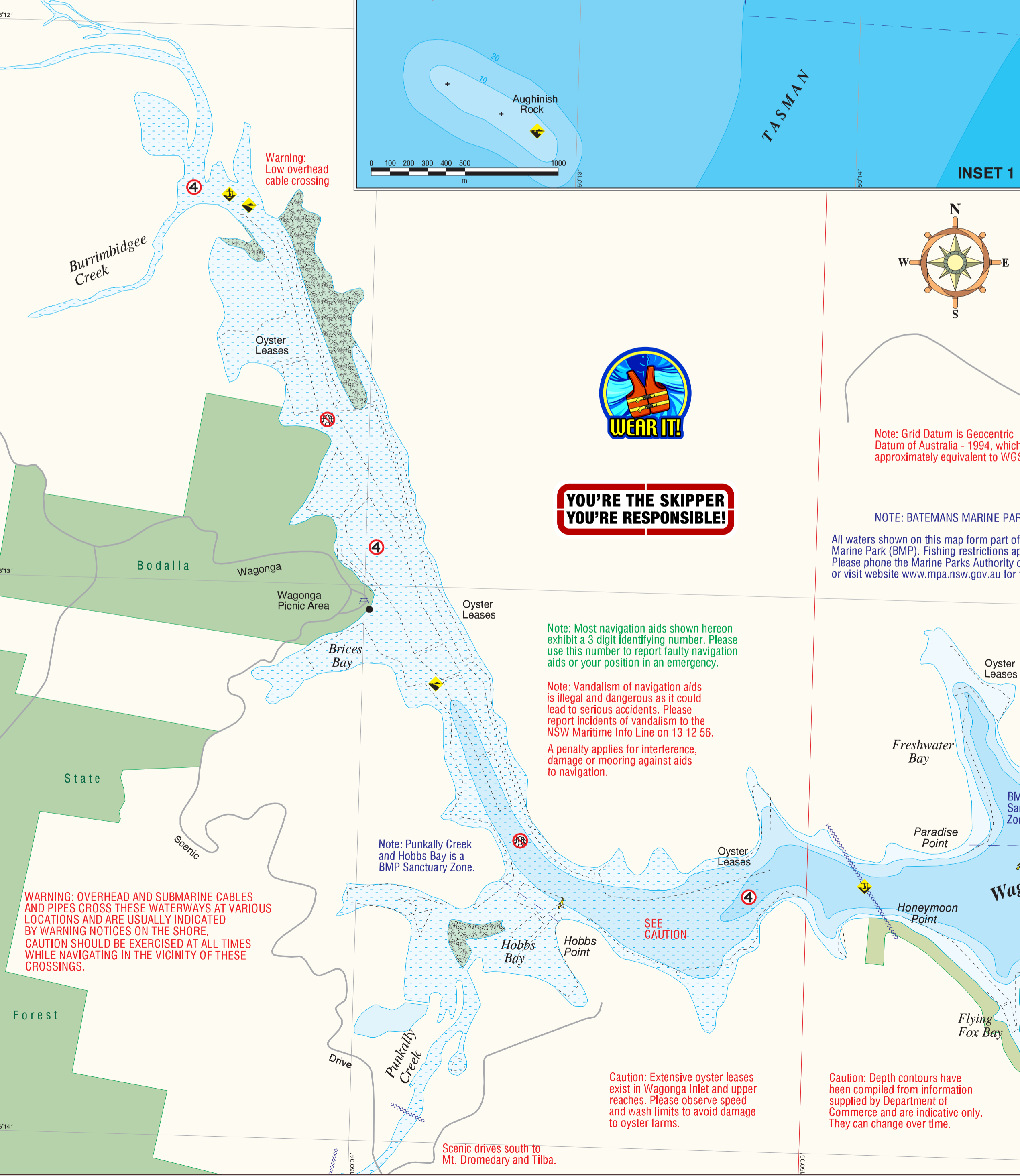
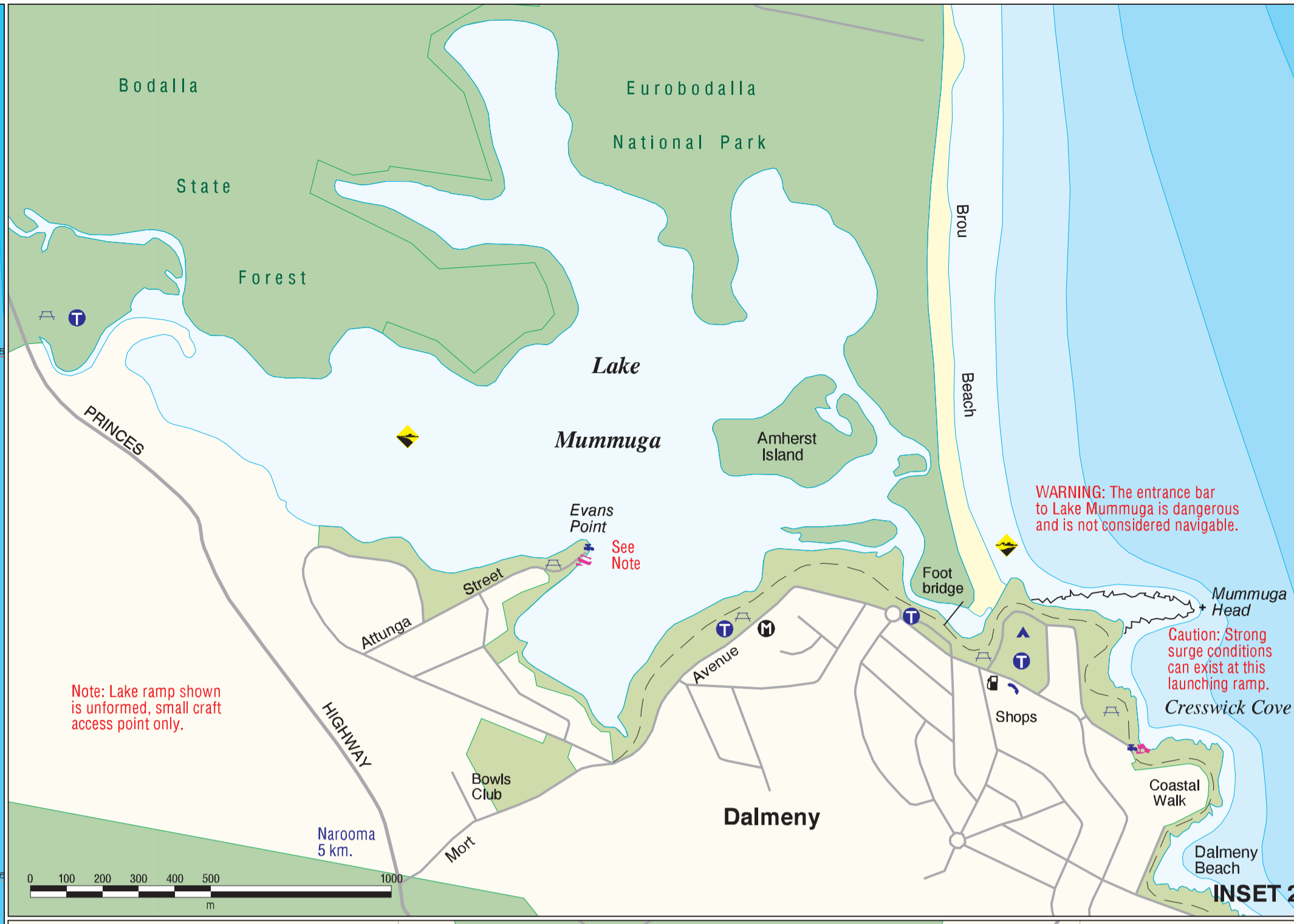
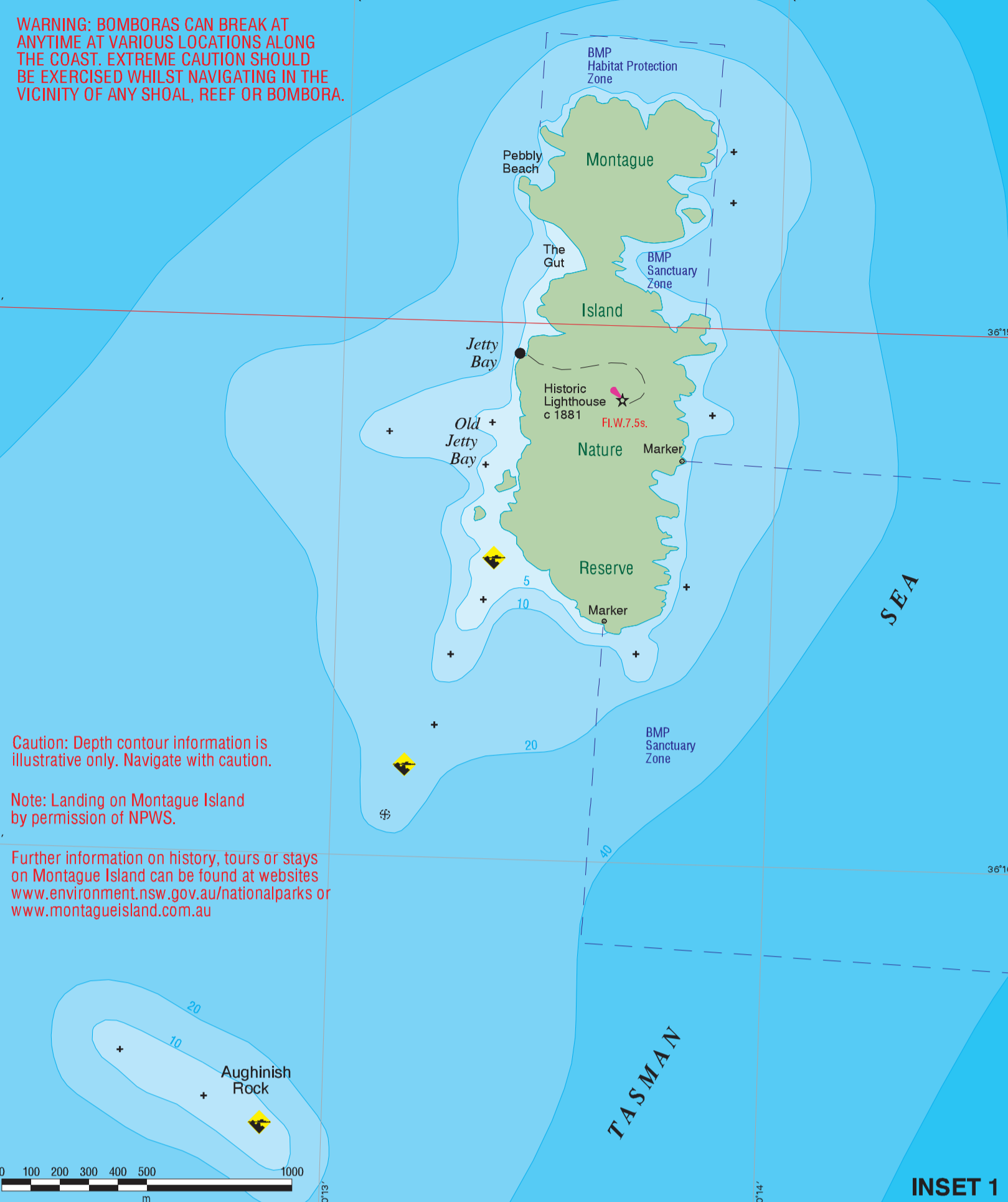
General Information

- Woodhouse or Fish Steaming
- Public: Lift/Ramp
- NSW Maritime Local Office
- Camping Ground
- Museum
- Public: Ground Facilities
- Motor Recreational Vehicle
- Public: Boat Office
- Boat Office
- Public: Accommodation
- Public: Information

NSW MARITIME

Water depth in metres

DISCLAIMER! This map is not intended to be used for navigational purposes and NSW Maritime takes no responsibility for the accuracy of the content herein.
Map Printed: July 2009. Copyright NSW Maritime
The local office of NSW Maritime is situated at: Cnr. Barnum & Graham Streets, Narooma NSW 2546. Telephone: (02) 4479-2364



**YOU'RE THE SKIPPER
YOU'RE RESPONSIBLE!**