

SEE MAP 21  
Blowering and Tabbingo  
Dams areas and  
other smaller Snowy  
Alpine Lakes.

Tantangara Reservoir  
15 km.  
SEE INSET 1.

Providence Portal  
Holiday Park  
ph. (02)6454-2357  
providenceholidaypark.com.au

Providence Lodge  
ph. (02)6454-2300  
providencelodge.com.au

**VISITOR INFORMATION CENTRES**  
COOMA  
119 Sharp Street, Cooma  
ph. 1800 636 525  
www.visitcooma.com.au

Snowy Hydro Discovery Centre  
Yulin Avenue, North Cooma  
ph. 1800-623776  
www.snowyhydro.com.au

Snowy Region Visitor Centre  
Kosciuszko Road, Jindabyne  
ph. (02)6450-5600  
www.environment.nsw.gov.au/nationalparks

Note: General information such as  
Café, Parks, Hotels, Motels, Picnic  
Grounds and Public Toilets etc. are  
indicated as a guide only. Not all can  
be shown in some areas.

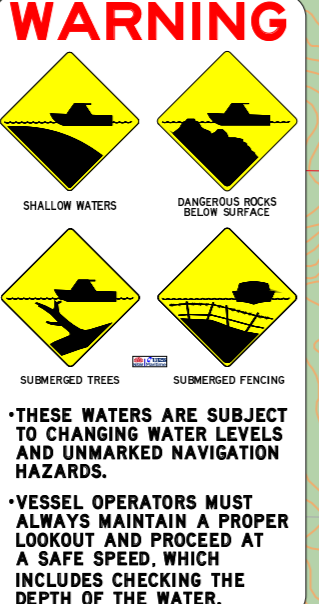
Note: Grid Datum is the Geocentric  
Datum of Australia - 1994, which is  
approximately equivalent to WGS-84.

CAUTION: Boating on inland waters  
demands special care. Information on  
Boating in these areas can be found  
in the RMS Boating Handbook  
available from our Service Centres or by  
contact options shown on the map cover.

Note: Most navigation aids shown on  
this map exhibit a three digit identifying  
number. Please use this number to  
report faulty navigators or your position  
in an emergency.



**WARNING**  
Be alert to:  
- Sudden weather changes  
- Unmarked and submerged hazards  
- Low water temperatures  
- Rough conditions  
Wear your lifejacket



**WARNING**  
SHALLOW WATERS  
UNMARKED AND UNMARKED NAVIGATION HAZARDS  
SUBMERGED TREES  
SUBMERGED FENCING  
\*THESE WATERS ARE SUBJECT TO CHANGING WATER LEVELS AND UNMARKED NAVIGATION HAZARDS.  
\*VESSEL OPERATORS MUST ALWAYS MAINTAIN A PROPER LOOKOUT AND PROCEED AT A SAFE SPEED, WHICH INCLUDES CHECKING THE DEPTH OF THE WATER.



For detailed Fishing information refer to Australian Fishing Network Map Number 9. www.afn.com.au

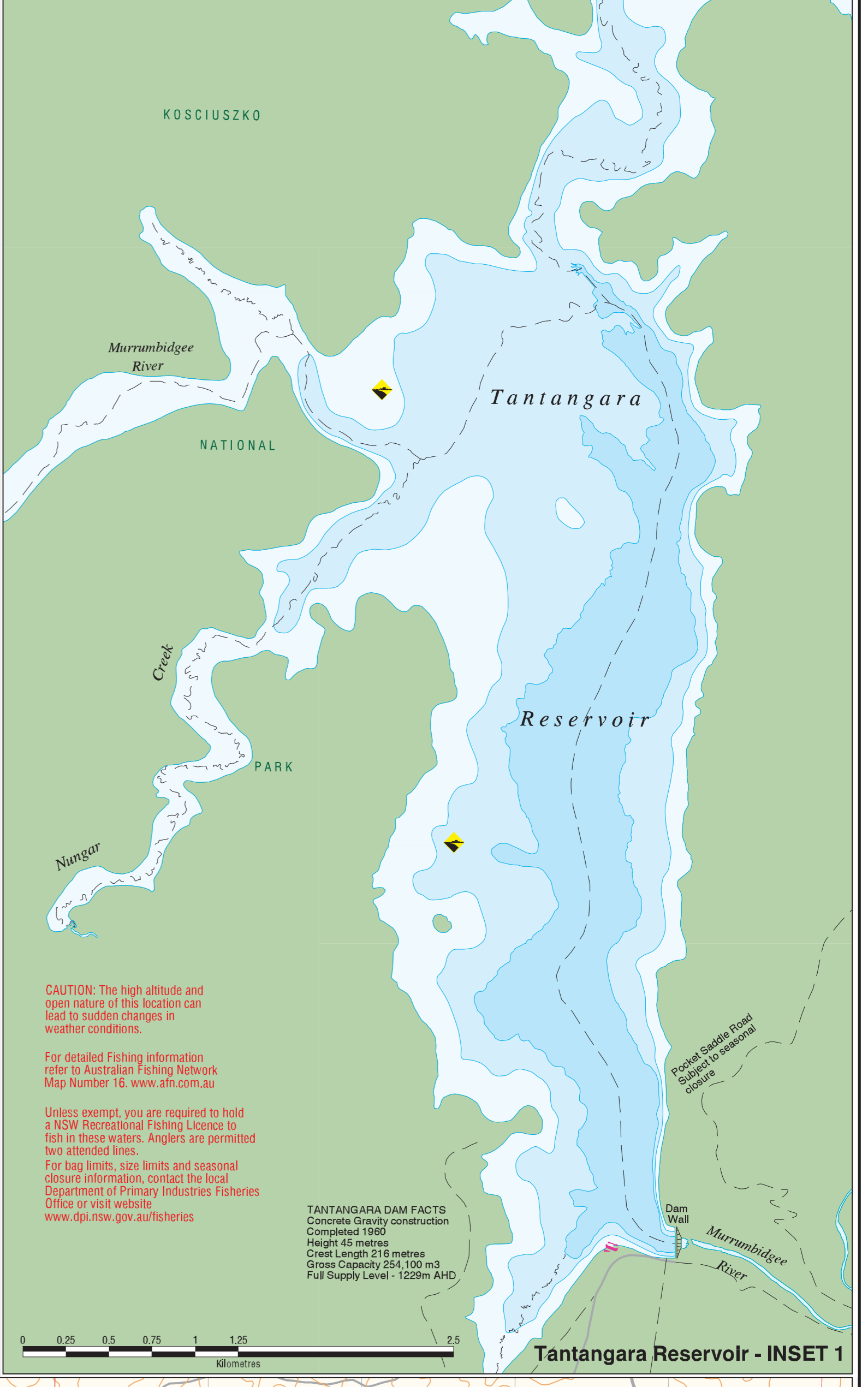
Unless exempt, you are required to hold a NSW Recreational Fishing Licence to fish in these waters. Anglers are permitted two attended lines.

For bag limits, size limits and seasonal closure information, contact the local Department of Primary Industries Fisheries Office or visit website: www.dpi.nsw.gov.au/fisheries

Land contour interval 20 metres.  
All heights and depths shown on this map refer to Australian Height Datum, (AHD)

For detailed land based information please refer to Land & Property Information Topographic Maps: Danisun 8626-3S, Old Adaminaby 8625-4N, Caddigat Creek 8625-1N, Nimmo Plain 8625-4 and Wambook 8625-1S.

Also refer to their Snowy - Kosciuszko Tourist Map. Visit: www.lands.nsw.gov.au for further information.



**Tantangara Reservoir - INSET 1**

**WARNING: BEWARE OF SUBMERGED ROCKS, TREES AND SHALLOW AREAS, PARTICULARLY AT LOWER LEVELS.**

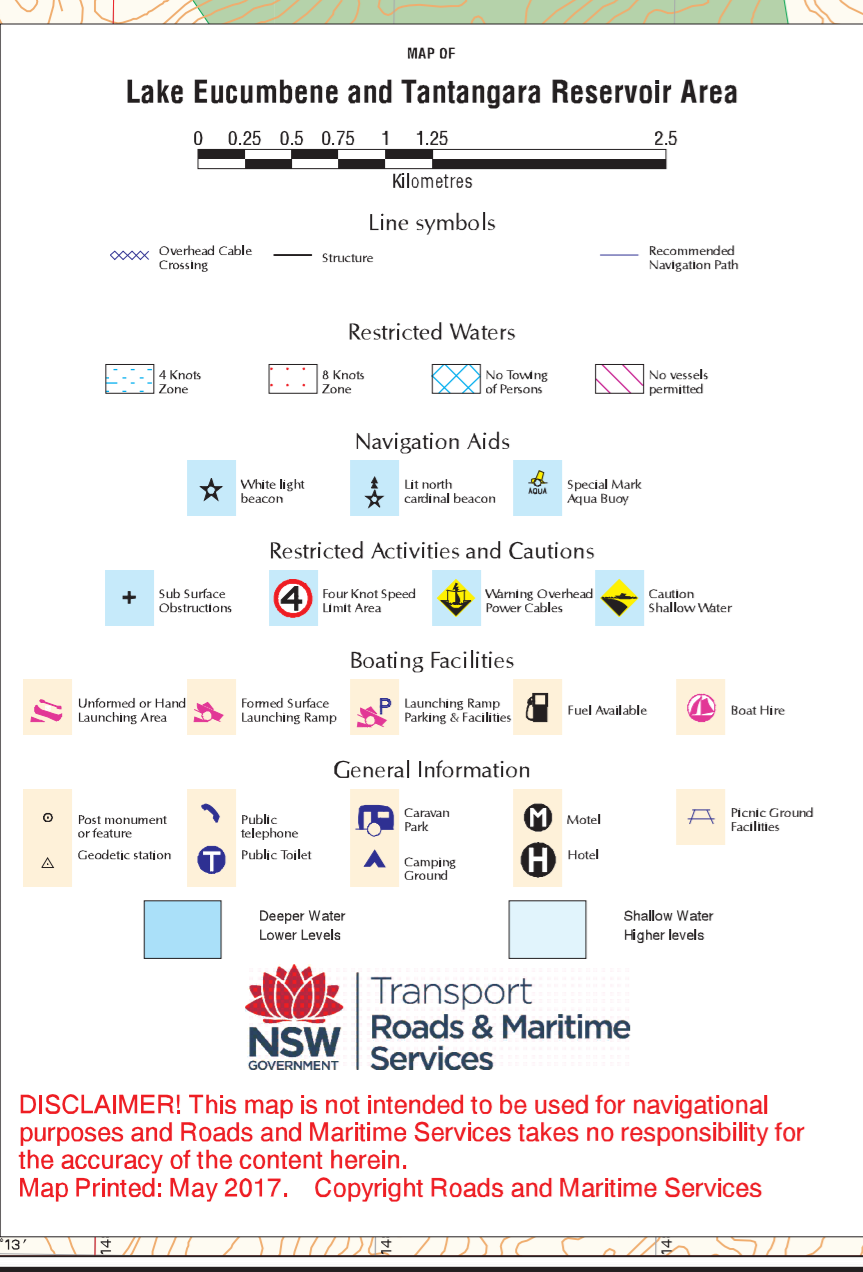
**LAKE EUCUMBENE STORAGE LEVELS**  
Normal Full Supply Level - 1164m AHD  
Minimum Operating Level - 1155m AHD  
Water depth contours have been compiled from original survey information provided by Snowy Mountains Authority and are indicative only. Further information on Eucumbene Dam, current water percentage levels and the Snowy Scheme generally can be found at www.snowyhydro.com.au

**NOTE:** Most foreshore lands around Lake Eucumbene are privately owned and permission is required to step ashore.  
No camping is permitted on foreshore area unless an authorised camping ground. Recreation areas shown are for day use only.



**WARNING: BEWARE OF SUBMERGED ROCKS, TREES AND SHALLOW AREAS, PARTICULARLY AT LOWER LEVELS.**

**DISTANCE INFORMATION**  
Shown in **BOLD purple** refers to direct kilometres from Dam Wall. Caution: actual distances required to be travelled maybe longer at lower levels.



**YOU'RE THE SKIPPER YOU'RE RESPONSIBLE!**



**WARNING: THESE ARE ALPINE WATERS AND WEARING A LIFEJACKET IS COMPULSORY FOR ALL PERSONS IN A VESSEL LESS THAN 4.8 METRES IN LENGTH (INCLUDING PADDLECRAFT) AND ALL PERSONS WEARING WADERS IN ANY VESSEL.**

**DISCLAIMER!** This map is not intended to be used for navigational purposes and Roads and Maritime Services takes no responsibility for the accuracy of the content herein.  
Map Printed: May 2017. Copyright Roads and Maritime Services

**Eucumbene Cove - INSET 2**