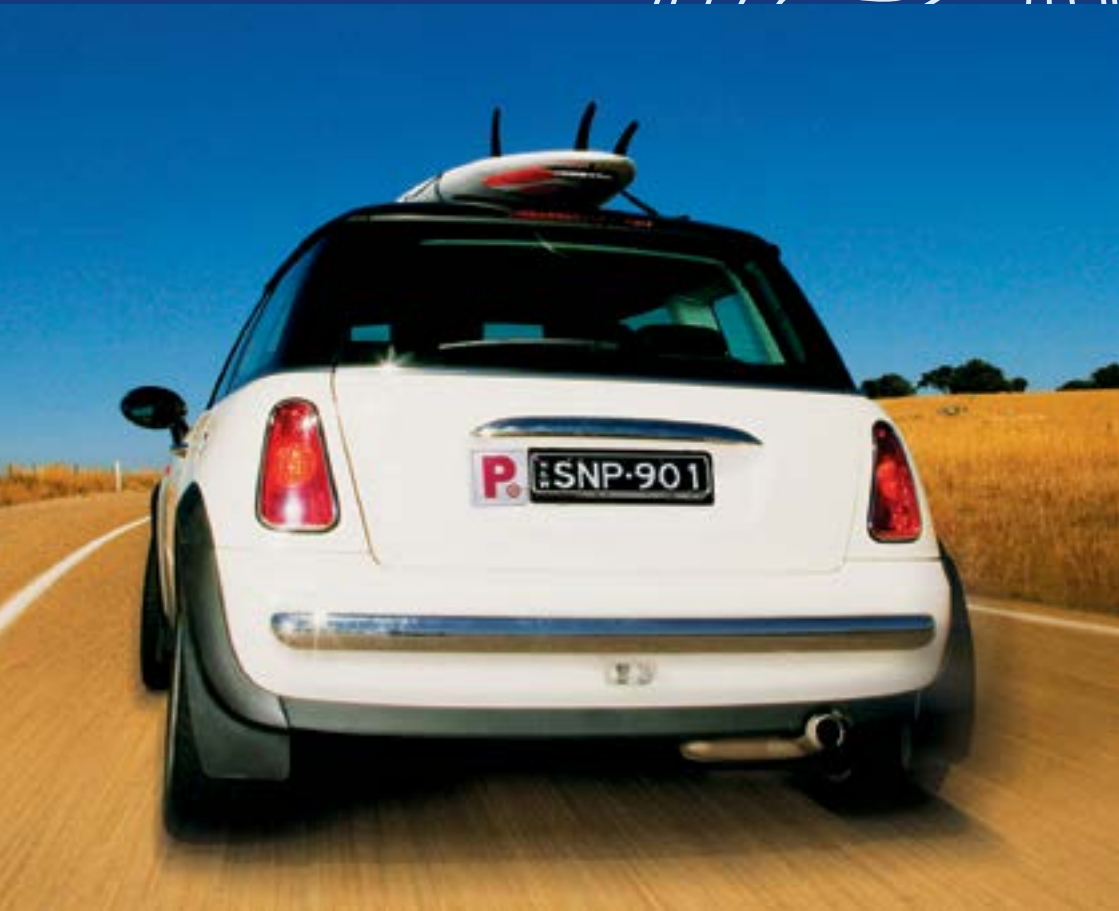


Transport for NSW

# A Guide to the Driving Test



[nsw.gov.au](http://nsw.gov.au)





# Introduction

This guide explains what you need to do before taking a Driving Test, what you will be tested on, and what happens afterwards.

The Driving Test is an important step in gaining your driver licence. When you pass you will be issued with your provisional P1 licence and will no longer need to keep a log book or have a supervising driver in the car with you. You will be free to continue learning and gaining valuable experience through driving on your own.

Learner drivers must successfully complete a computer based Hazard Perception Test before attempting the Driving Test.

For more detailed information about the Driving Test you can read the Driving Test (Class C) Testing Officers Manual. The Road User Handbook is also a useful publication that covers the main road rules you need to know to drive legally and safely on NSW roads. You can access both publications at **nsw.gov.au**

To access the current Road Rules, visit **legislation.nsw.gov.au**

# Contents

---

|              |   |
|--------------|---|
| Introduction | 1 |
|--------------|---|

---

|                                 |   |
|---------------------------------|---|
| The Driving Test                | 3 |
| Booking a test                  | 3 |
| What you must bring to the test | 4 |
| On the day of the test          | 5 |
| The way the test works          | 7 |

---

|                       |    |
|-----------------------|----|
| Low risk driving      | 8  |
| Observation           | 8  |
| Speed management      | 11 |
| Road positioning      | 14 |
| Decision making       | 23 |
| Responding to hazards | 25 |

---

|                        |    |
|------------------------|----|
| Vehicle control        | 29 |
| Operating the controls | 29 |

---

|                              |    |
|------------------------------|----|
| Test results                 | 31 |
| Why you might fail           | 31 |
| What happens after the test? | 38 |

---

|   |    |
|---|----|
| Tips for new provisional drivers        | 41 |
| Provisional licence driver restrictions | 41 |

---

# The Driving Test

The Driving Test is the final step to progress from a learner licence to a provisional P1 licence. You may also need to take the Driving Test if you have recently moved to NSW.

The Driving Test is a practical on-road test that focuses on your ability to perceive hazards and respond to them. A testing officer assesses your driving skills, decision making, your awareness of other road users and how you share the road.

Depending on what driver licence you have and the type of Driving Test you book, you may need to do a few things before your test.

Learner drivers need to pass a computer-based Hazard Perception Test (HPT) within the previous 15 months of their Driving Test booking. They also need to log at least 120 hours of driving, including 20 hours at night before they can do the Driving Test.

Other drivers may need to pass a Driver Knowledge Test or get a Fitness to Drive Assessment before their Driving Test booking.

---

## Booking a test

When you are ready for the Driving Test book and pay:

- online at **[service.nsw.gov.au](https://service.nsw.gov.au)**
- by calling **13 22 13**
- at a service centre.

To change or cancel your booking, you must do this at least 48 hours before the test date or your fee may not be transferred or refunded.

# What you must bring to the test

- **Proof of identity**

Your learner, overseas or full licence driver licence. If you have an overseas licence you may also need other identity documents and an acceptable translation (if they are not in English).

- **A licence application form**

You can get the application form at **nsw.gov.au** or from a service centre and complete it before your test.

- **Glasses or contact lenses**

If you need them to drive or to do the service centre eyesight test.

- **Payment or concession card**

To pay the licence fee or apply for a concession if you pass the test. Some service centres only accept card payments, so please check **service.nsw.gov.au** if you want to pay with cash.

- **Your completed Learner Driver Log Book** (under 25 year olds only)

You must have at least 120 hours driving experience and the 'Declaration of Completion' signed in your book by a supervising driver. The log book app must be submitted least 48 hours before your test.

- **A registered and roadworthy vehicle**

The testing officer will check your vehicle is:

- the right type for your driving test (heavy vehicles must also meet the minimum requirements for the test class such as load capacity)
- suitable for safe use (seatbelts, headrests, working lights and lenses not broken)
- in a satisfactory condition (legal tyres, no windscreen cracks and no sharp edges on the body exterior).

## Warning

If any of the items you need to bring are missing or cannot be fixed in time for the test, it will be terminated. When a test is terminated your booking fee is not refunded and you will need to pay to rebook.

---

## On the day of the test

When you go to a testing centre, you must have a person with you who has a full driver licence. If you fail the test you cannot drive away on your own and will need a licensed driver with you.

On the day of the test you must:

- arrive at least 15 minutes early
- park your vehicle in the driving test parking area
- report to the concierge or a customer service representative at the counter and give them your log book if you have one.

The testing officer will call you to the counter when it is your turn to start the test. Before the test starts you can ask any questions about the test. When you sign the score sheet, you have started the test.

The testing officer cannot tell you how to drive or coach you on the test as it is an assessment of your ability to drive.

## What happens during the test

Only you and the testing officer can be in the vehicle for the test. Sometimes an authorised monitoring officer will sit in on your test. The monitoring officer's job is to watch the testing officer to make sure the test is conducted properly.

We know tests can be stressful, so try to stay calm and relaxed. No one expects you to drive as skilfully as an experienced driver.

If you fail the test, you can try again. You will need to have at least 7 days between your failed test and another test booking. This is to give you time to practise and prepare for your next Driving Test.

When your test is finished, the testing officer will provide feedback on your performance. This will be general information rather than specific comments about your driving. The testing officer will give you a copy of your test score sheet and feedback. You can use this to understand what you need to do to improve your driving.

## Bribing people is against the law

It is illegal to offer, request or accept gifts, rewards, money or other favours in order to get a licence without passing the required tests. Penalties are severe and include fines and imprisonment. All suspected cases of corruption will be investigated and strong action will be taken against all those involved.

The only licence fees and charges you have to pay are set by Transport for NSW. Do not pay any more or offer to pay more to get your licence.

If you know or believe that someone has got or is about to get a NSW licence by offering or responding to a request for a bribe – or if you suspect or know of any other corruption involving a NSW Government employee – call Transport for NSW on **1800 043 642** (free call) or the Independent Commission Against Corruption (ICAC) on **(02) 8281 5999**.

The test will be stopped and terminated if you offer a bribe or try to influence the testing officer. The police may be called or you could be taken to the police station and charged with offering a bribe.

To avoid a misunderstanding make sure all money and valuables in your vehicle are locked away or out of sight.

## Other reasons a test can be terminated

If there is any suspicion you have consumed alcohol or drugs, the test will be terminated. When a test is terminated your booking fee will not be refunded and pay to rebook.

If you need more information about test termination, go to the 'Test results' section of this guide for a list of the criteria.



## The way the test works

The Driving Test is a set course over 25 zones. A testing officer will be in the car with you to direct the drive and record your performance on a test score sheet. Your test is scored on your ability to show low risk driving behaviour in a range of situations.

The test has five key performance indicators:

- speed management (S)
- road positioning (P)
- decision making (D)
- responding to hazards (H)
- vehicle control (C).

| Assessments |   |   |   |   |   |   | NOTES |
|-------------|---|---|---|---|---|---|-------|
| S           | P | D | Z | H | R | C |       |
| ✓           | ✓ | ⊙ | 1 | — | ✓ | ✓ | H     |
| ✓           | ✓ | ✓ | 2 | ✓ | ⊙ | ✓ |       |
| ✓           | ✓ | ✓ | 3 | ✓ | ✓ | ⊙ | S     |

Annotations:

- No hazards present in the zone (points to 'H' in row 1, column 4)
- Observation error (points to 'H' in row 1, column 8)
- A tick, requirement demonstrated (points to '✓' in row 2, column 6)
- Signal error (points to 'S' in row 3, column 8)
- A circle, requirement not demonstrated (points to '⊙' in row 3, column 7)
- Hazard present in the zone (points to '—' in row 1, column 5)

Breaking road rules or following other vehicles too closely is 'high risk' driving behaviour. If you drive this way, you will not pass the test, regardless of your overall score.

Go to the 'Test results' section of this guide for a list of fail items. To pass the Driving Test you must score at least 90 per cent or more with no fail items.

In all the diagrams in this guide you are always the blue car, marked A.



# Low risk driving

Driving is never risk free, but you should aim to drive 'low risk'. You will be assessed on your low risk driving skills in speed management, road positioning and decision making. The test also assesses your ability to perceive and respond to hazards.

---

## Observation

Observation is an essential skill for a low risk driver. The testing officer will be assessing your observation techniques throughout the test. You will fail if your observation is poor.

## Scanning

Scanning is keeping your eyes moving, checking in one area for no more than a couple of seconds and then moving your eyes to another area.

Low risk drivers constantly scan traffic conditions.

When driving around corners turn your head and look through the corner scanning the road ahead of your vehicle.

Slow down if vision of the road ahead is limited.

You will be expected to make regular checks in your rear vision mirror so you know what is happening behind you. You must check your rear vision mirror before you slow down or change direction.

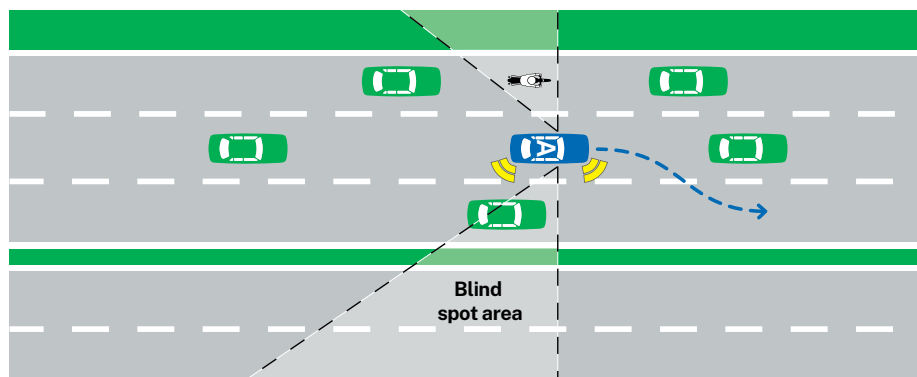
When scanning look:

- in the distance
- at the road surface
- to the left and right
- in your mirrors
- at the instruments and gauges.

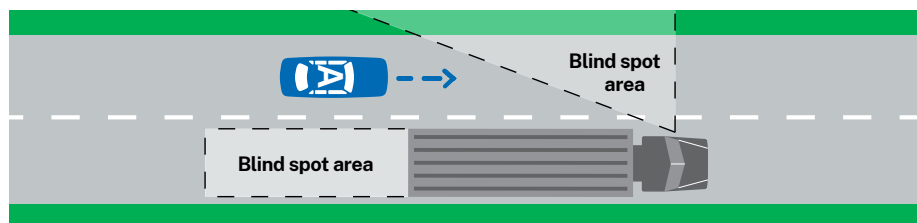
Before proceeding through traffic lights, you must turn your head and check to ensure there are no vehicles that may be ‘running’ the red light, or pedestrians crossing against the ‘don’t walk’ sign. You must also turn your head and check to ensure it is safe before proceeding across a railway level crossing.

## Checking blind spots

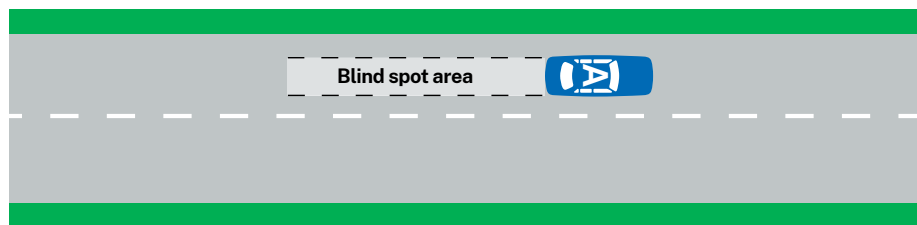
A car, motorcycle or bicycle in an adjacent lane can easily be positioned beyond the area visible in the mirrors. Checking your blind spots is an essential observation skill as many crashes occur because drivers do not turn their head and look over their shoulder before steering. Frequently not performing observation checks will result in a fail.



Check blind spots before changing your road position.



Do not drive in the blind spot of other vehicles.

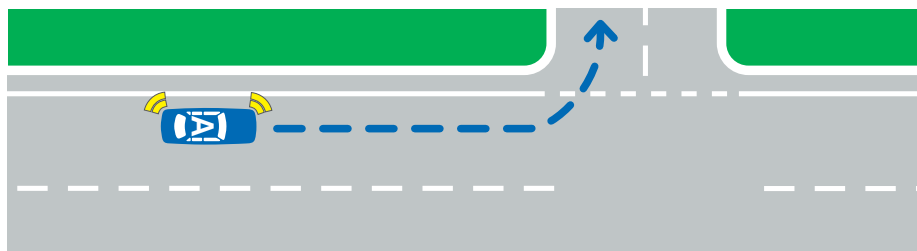


All vehicles have a large blind spot behind them. Because of this blind spot, extra care must be taken when reversing as small children can be out of view.

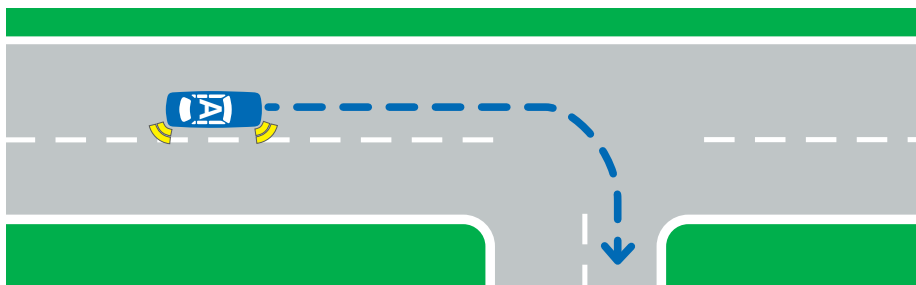
You must turn your head and check your blind spots before:

- changing lanes
- leaving or returning to the kerb
- merging or diverging
- reversing
- turning left – looking for pedestrians, cyclists and motorcyclists who could be beside you in your blind spot
- turning right – looking for vehicles that may be overtaking you
- joining the traffic stream
- leaving the inside lane of a multi lane roundabout.

When reversing you must turn your head and look over your shoulder to check through the rear window for vehicles and pedestrians that may not be visible in your mirror. All vehicles have blind spots behind.



Before turning left you must check for bicycles and other vehicles that could be in your blind spot.



Before turning into a street or driveway you must have a head check for vehicles that may be overtaking you.

Observation errors are recorded on the Driving Test score sheet as a circle around 'D' (decision) and an 'H' in the notes column.

## Speed management

You must drive at a safe and legal speed, managing your speed to suit traffic, weather and road conditions.

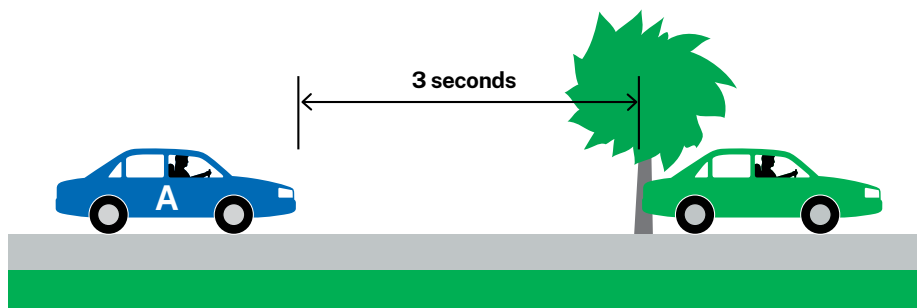
### Maintain space to the front

You must adjust your speed to maintain crash avoidance space to the front of your vehicle.

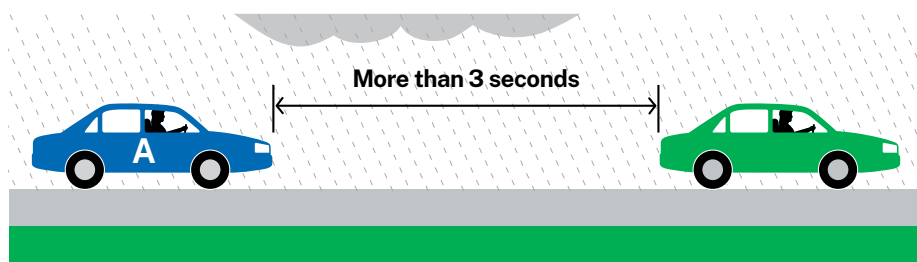
The minimum safe distance needed in front is three seconds. This must be increased in poor conditions, or when you are being followed too closely by another vehicle.

When you change lanes or if another vehicle moves into your 3-second gap, you will be expected to create a new gap by gradually dropping back.

To calculate a 3-second crash avoidance space when following another vehicle use this basic technique: as the rear of the vehicle in front of you passes a stationary object at the side of the road such as a power pole, tree or sign, start a 3-second count 'one thousand and one, one thousand and two, one thousand and three'.



You must stay at least 3 seconds behind the vehicle ahead.



You must increase this distance in poor conditions (such as rain, fog and dust).

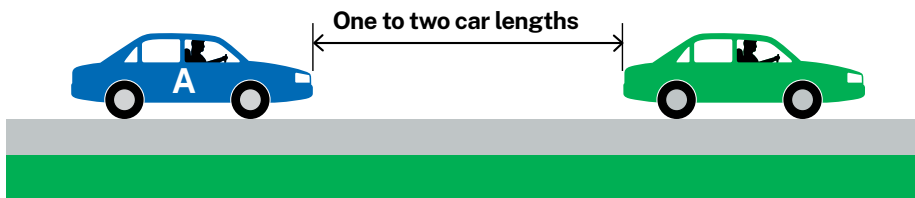
If your car passes the object you picked before you finish the 3-second count, you are following too closely. Your crash avoidance space is not large enough. Slow down, and repeat the count again until the 3-second crash avoidance space is achieved.

You should increase your crash avoidance space to 4 or more seconds when driving in poor conditions, such as on unsealed (dirt or gravel), icy or wet roads, or at night.

You can help other vehicles, such as trucks and buses, to keep their crash avoidance space by not cutting in front of them.

## Maintain space when stopped

When you are stopped in traffic you must keep one to two car lengths from the vehicle in front to reduce the risk of colliding with it if you are hit from behind. You may move forward to within 1m once other vehicles are stopped behind you and the risk of being hit from behind is reduced.



Leave one to two car lengths in front when stopped.

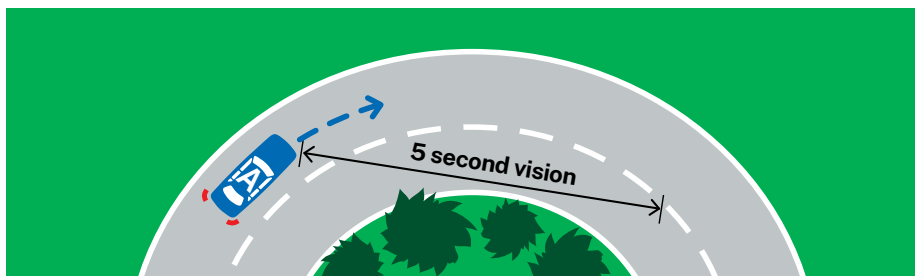
## Reduce speed

You must slow down if you do not have a clear view of the road ahead.

Situations where your vision may be reduced include: blind corners; blocked intersections; crests and poor weather conditions.

Slow down if you cannot see five seconds ahead.

To calculate 5-second vision in a curve, pick a fixed point in the oncoming lane that has just come into view and start a count 'one thousand and one, one thousand and two... one thousand and five'. If you reach the point before five seconds you are driving too fast for the available vision.



Slow down if you cannot see 5 seconds ahead.

You must also slow down in situations where space to the side of your vehicle is limited.

For traffic calming devices, such as speed humps or chicanes, slow down enough to ensure there is no undue jolt or sideways roll of your vehicle.

## Road positioning

During the test you will be expected to maintain a safe, legal position on the road. This includes positioning at stop signs and lines and also during manoeuvres such as a 3-point turn and reverse parking.

When you approach a 'Stop' sign and 'Stop' line (single unbroken line), you must come to a complete stop. You must stop before the line, and as close as possible to the line. If you initially stopped more than 1m from the line you must move up and stop within 1m of the stop line, with no part of the vehicle over the line.

You must remain at a complete stop, until it is safe for you to go.

## Buffering

Buffering is keeping as much space to the sides of your vehicle as practical in any situation. You should have at least 1m from other vehicles and hazards.

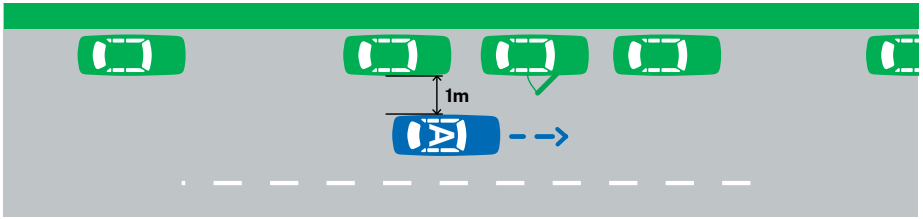
Where you are not able to keep a safe space from other vehicles and hazards you must slow down.

You are also expected to change your position on the road to create space from hazards. On crests and curves, slow down and move away from oncoming traffic. When possible, you should be at least 1m from the centreline on blind crests and curves.

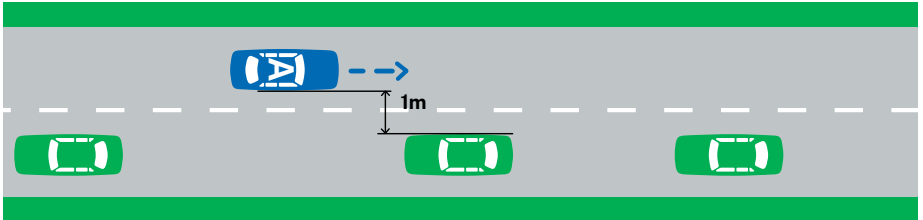
In multi-laned traffic, avoid driving in the blind spot of other drivers and in the high risk area beside other vehicles.

If you unnecessarily drive on the wrong side of the road, or unnecessarily cross any edge lines or lane markings, you will fail.

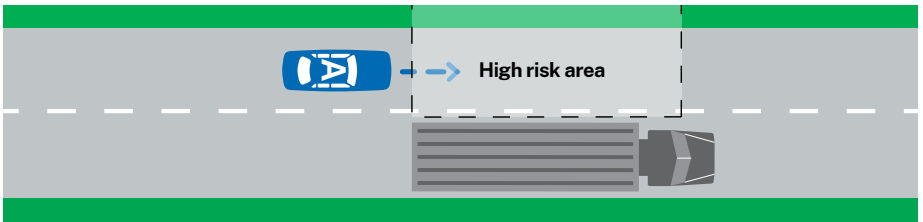




You must allow space for parked vehicles to open doors.



You must allow clearance from oncoming traffic.



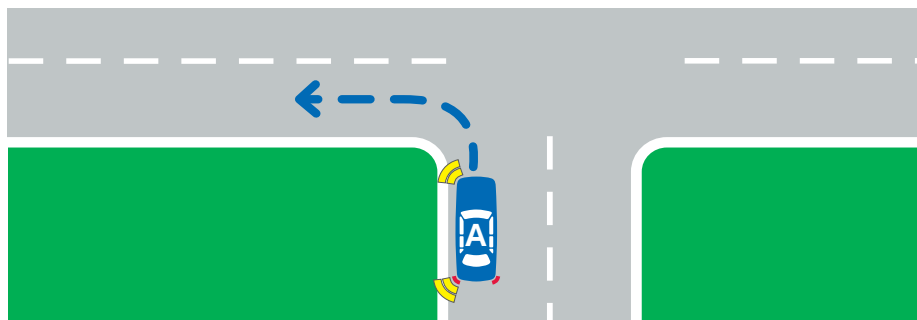
Avoid driving in the high risk area beside other vehicles.

To reduce the risk of head-on crashes on multi-lane roads, only drive in the right lane when overtaking or planning to turn right.

## Turns at intersections

Your position in making turns is important to ensure a smooth and safe flow of traffic.

When turning left on unmarked roads you must approach as far left as practical. When turning left on laned roads, you must approach in the left lane, or any marked left turn lane.

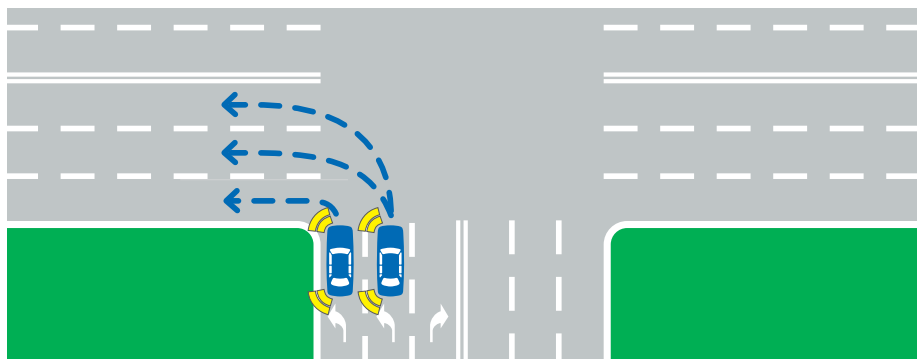


Approach left turns as far left as you can.

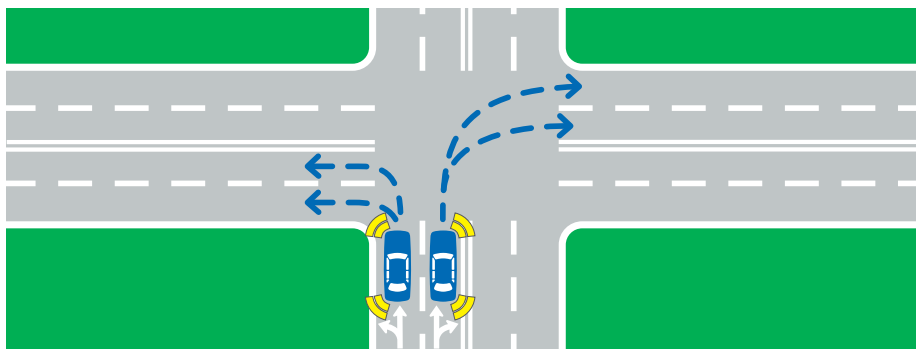
As you finish a left turn, exit into the lane or part of the road that is best for the traffic conditions. Your choice will depend on where you are going next, whether vehicles are parked in the left lane, or whether outside lanes must be left clear for overtaking.

However, when there are multiple turning lanes, you must finish in a permissible lane.

You will fail if you exit in an incorrect lane.



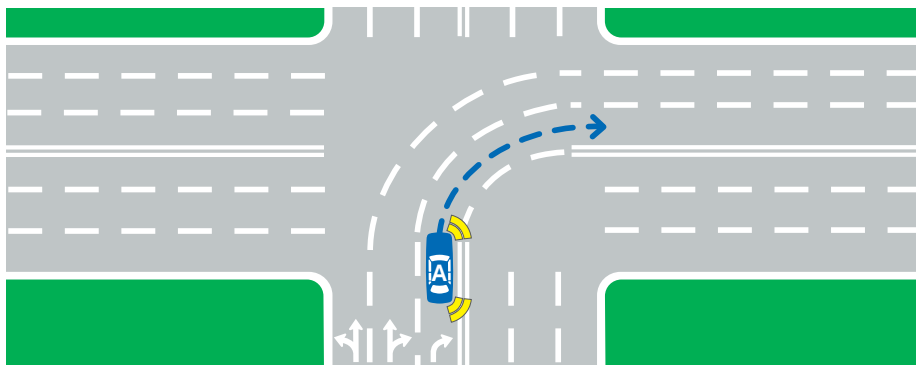
When there are multiple turning lanes, you must finish in a permissible lane.



You can turn into either lane, depending on traffic.

You must keep your steering straight while waiting to turn right, to protect you from being pushed into the oncoming traffic if hit from behind.

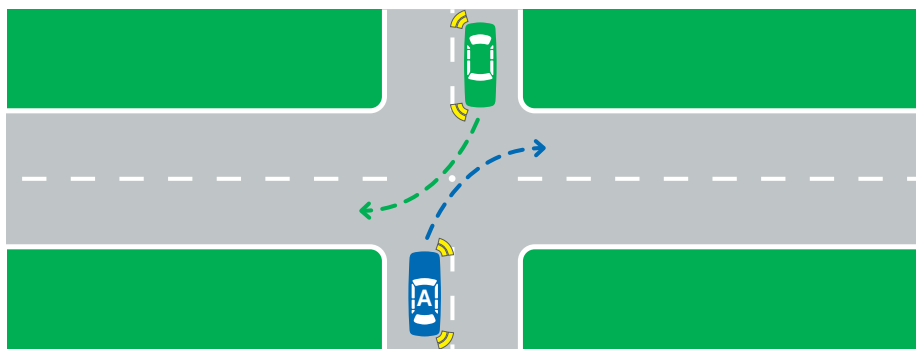
When turning right on unmarked roads you must keep to the left of, but as close as practical to the centre of the road. When turning right on laned roads you must approach in the right lane or any marked right turn lanes.



In marked lanes stay in the same lane.

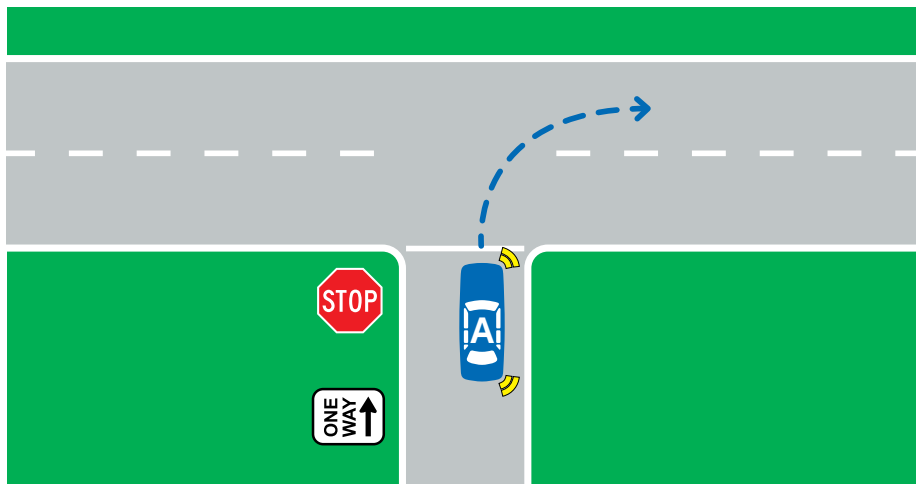
In marked lanes you must stay in the same lane as you go from one road to another.

When turning right, steer to the right of an imaginary centre of the intersection. This allows vehicles opposite you to also turn right. As you exit, you must keep to the left of the centre of the road.

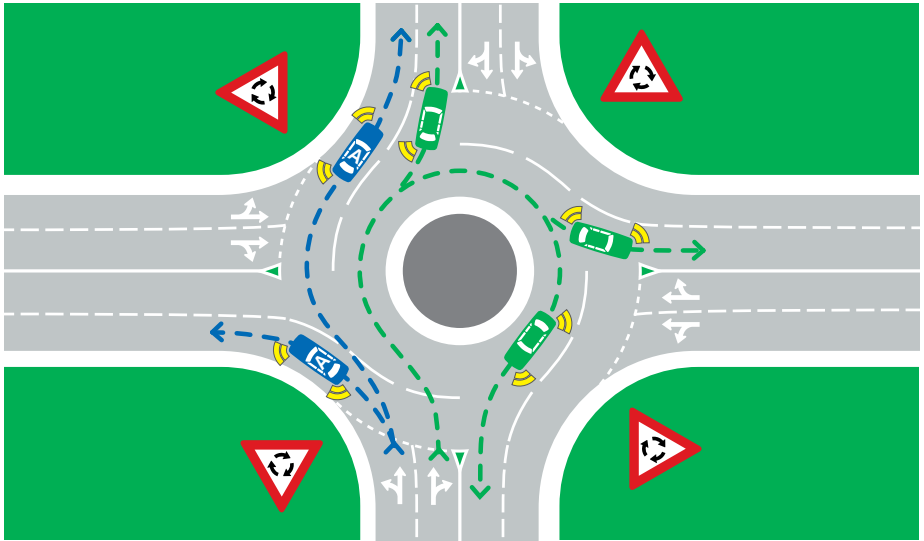


Turning vehicles pass in front of each other.

When turning right into a one-way street, approach and exit as close as possible to the right side of the road.



Keep to the right when turning right from a one-way street.



Indicate left when leaving the roundabout.

On multi-laned roundabouts position your vehicle in accordance with the road markings for the direction you intend to travel. You must exit in a permissible lane.

**Approaching a roundabout:** Vehicles entering a roundabout must give way to any vehicle already in the roundabout.

**Exiting a roundabout:** If practical, you must always signal left when exiting a roundabout.

You must check your blind spot before crossing lanes within a roundabout when exiting.

## Manoeuvres

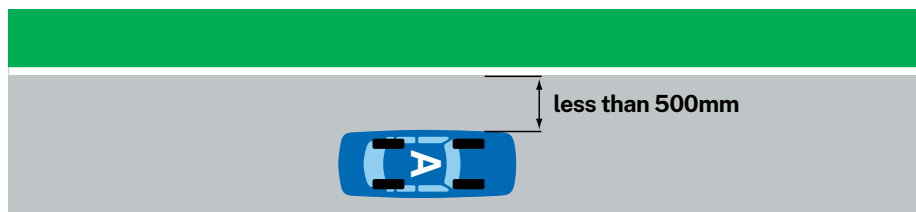
On the Driving Test you will be asked to do a number of manoeuvres that will be selected from the following:

- a kerb side stop
- a hill start
- a 3-point turn
- parking, reverse parallel, 90 degree or 45 degree, front or rear to kerb (type depending on local availability).

During the manoeuvres you will be assessed on your ability to position your vehicle legally, safely and accurately.

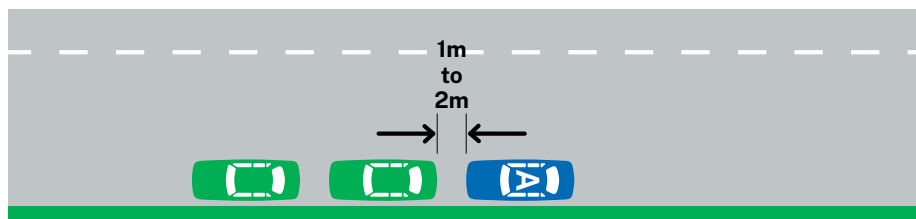
You must:

- Park close and as near as practical to the kerb  
(The test requires you to be less than 500mm from the kerb).



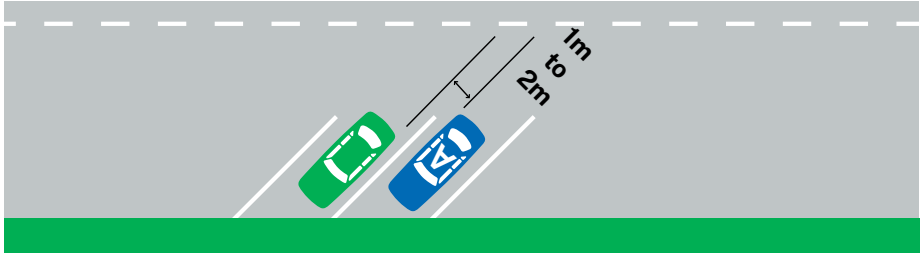
The vehicle should be parallel and closer than 500mm to the kerb.  
The wheels must not touch the kerb.

- Stay at least 1m away from other vehicles (The test requires you to be no more than 2m from other vehicles when you park).



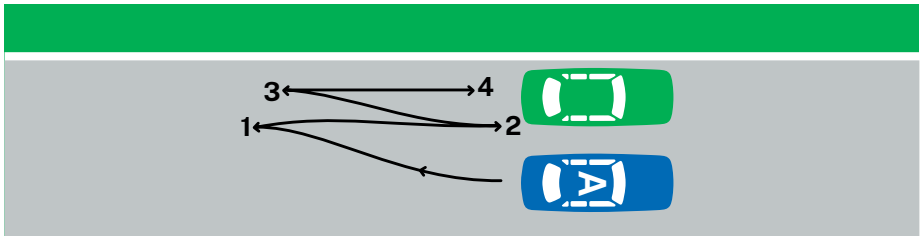
You must make sure the vehicle is at least 1m from other vehicles.

- Reverse only as far as you need (if you reverse more than 7m back from the rear of the vehicle you are parking behind, you will fail).
- Where possible, finish as close as practical to the angle required for that parking area and within any marked lines.



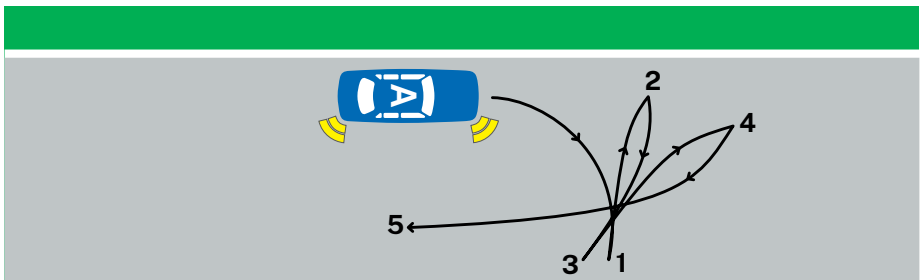
Park at required angle and within any marked lines.

- Use effective steering (The test allows a maximum of four direction changes for all parking manoeuvres).



Park using a maximum of 4 direction changes.

- During the 3-point turn you must check left and right for traffic before each movement.



Turn around using a maximum of 5 direction changes. If it is possible to complete the manoeuvre in three changes of direction you will be expected to achieve this.

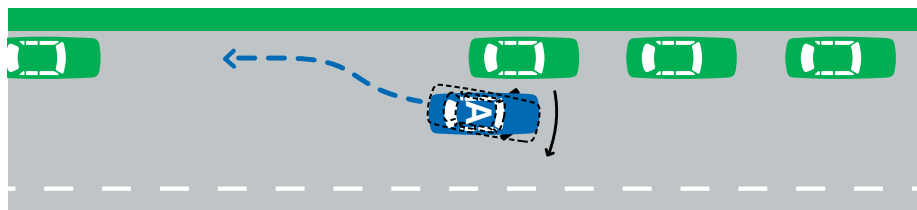
Mounting the kerb at anytime during the test will result in a fail.

## Observation checks during manoeuvres

During manoeuvres you must check for other vehicles, pedestrians and possible hazards.

You must turn your head and check your blind spot before you:

- move to the kerb to commence the manoeuvre
- leave the kerb to rejoin the traffic
- steer, if during reversing the front of your vehicle will swing into the lane.



You must check your blind spot before the front of your vehicle swings into the lane beside you.

While reversing you must check in the direction of travel. This includes checking the mirrors and through the rear and side windows.

You may use reversing cameras and sensors to aid reversing. However, you must also check your mirrors and the area around your vehicle.

If your vehicle has a park assist device, this must be switched off for the reversing manoeuvres.

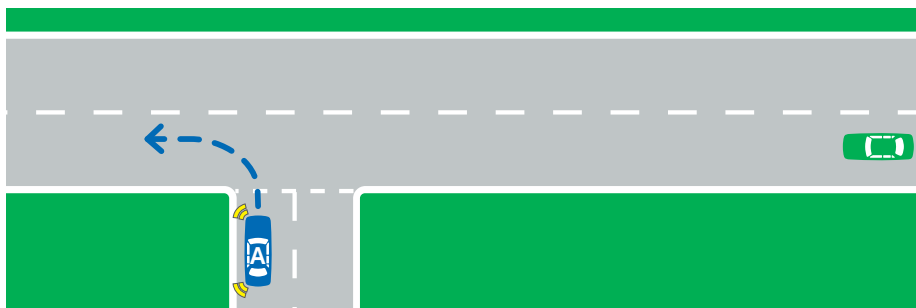


## Decision making

A critical decision must be made whenever you enter traffic, change lanes, cross or turn at an intersection.

### Affecting the crash avoidance space of others

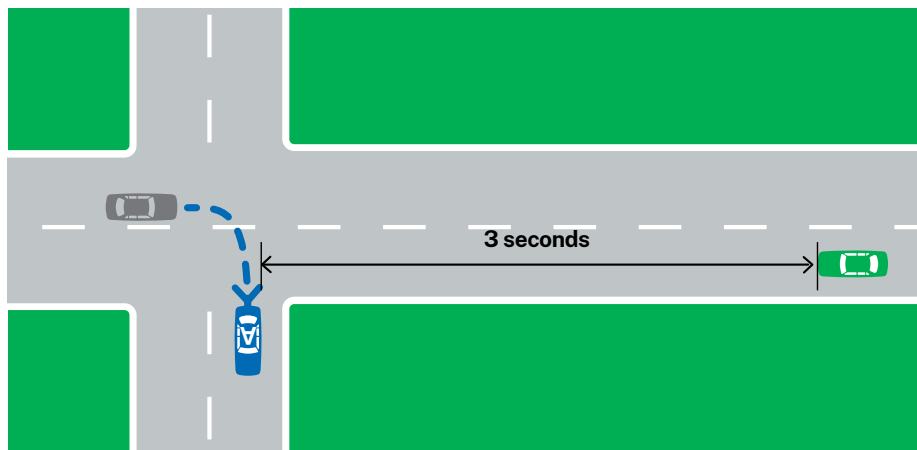
The testing officer will be checking that you go only when there is a safe gap in the traffic and that you are not affecting the crash avoidance space of other drivers.



Choose a safe gap so other vehicles are not forced to change speed.

A safe gap ensures that other vehicles do not need to change their speed or position. When turning across traffic make sure your vehicle is clear of the intersection by at least three seconds before the approaching vehicles arrive. When joining a traffic stream select a gap that allows you to reach the traffic speed before the approaching vehicles are within three seconds of your car.

During the test you will be expected to demonstrate smooth, flowing decision making. If you reject safe gaps or unduly stop at intersections when it is clearly safe to proceed, you may fail.



Be clear of the intersection for 3 seconds before other vehicles arrive.

When approaching traffic lights that are green, check your mirrors and be prepared to stop.

You must stop at a yellow light, unless sudden braking might cause a crash.

## Situations with limited vision

At some intersections your vision may be affected by other vehicles, trees or buildings. In these situations you must demonstrate caution when proceeding. If you proceed into an intersection without due care, you may fail.

After stopping correctly at a 'stop line' you may move forward into an intersection to improve your vision, provided you do so safely and do not affect other vehicles or pedestrians.

# Responding to hazards

Your hazard perception skills are essential to low risk driving. During the test you will be assessed on your ability to recognise hazards and make an appropriate response.

## Hazard and response

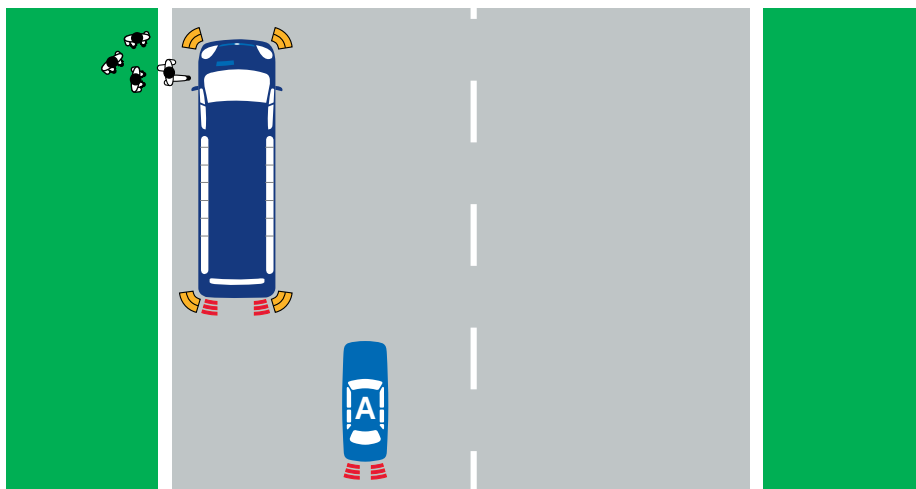
During your test you must respond appropriately to hazards.

As you scan the traffic environment you should be asking yourself whether the things you see could possibly enter your crash avoidance space.

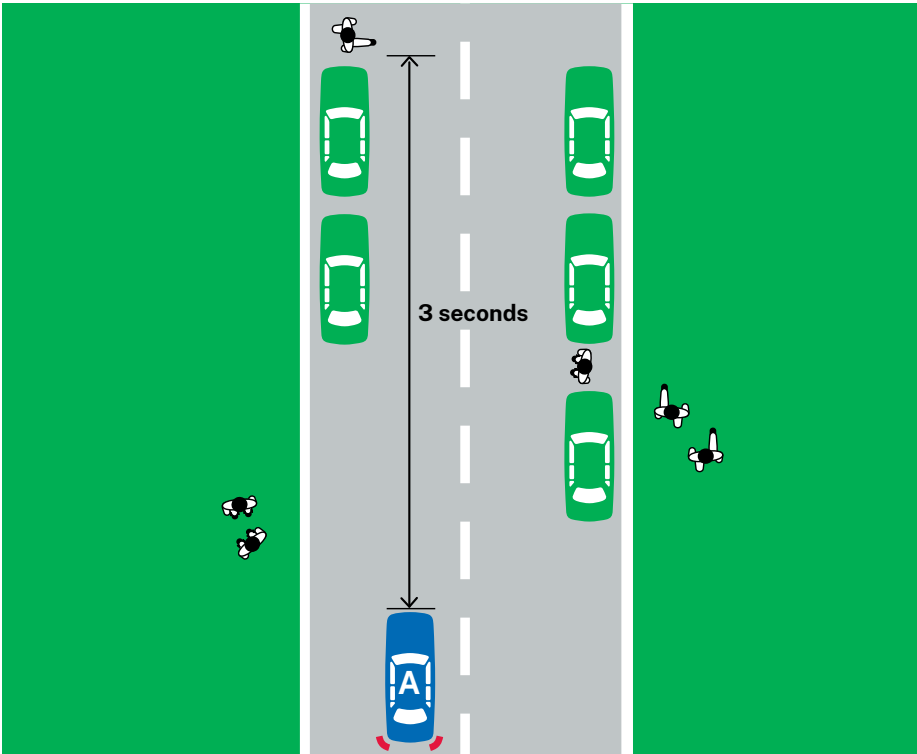
If the answer is yes and something could block your path, your response should be to protect your crash avoidance space by:

- 'setting up' or covering the brakes
- easing off the accelerator
- reducing speed
- creating a 'buffer' from the hazard by changing your position on the road or changing lanes.

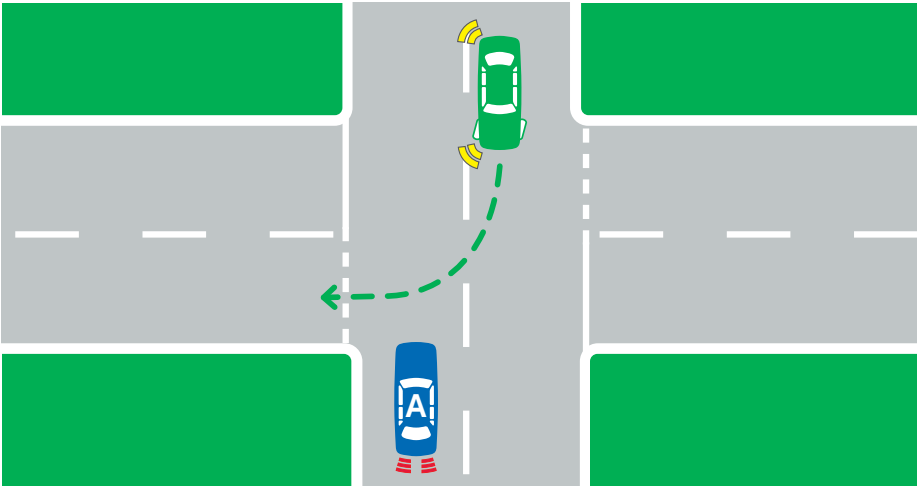
Your ability to respond means that you are better able to deal with any dangerous situation that might occur.



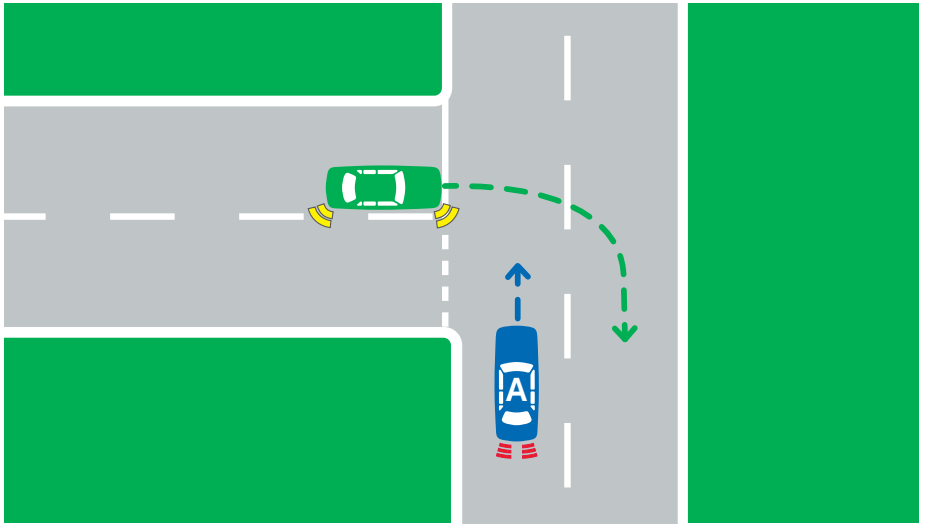
Respond when something can enter your crash avoidance space.



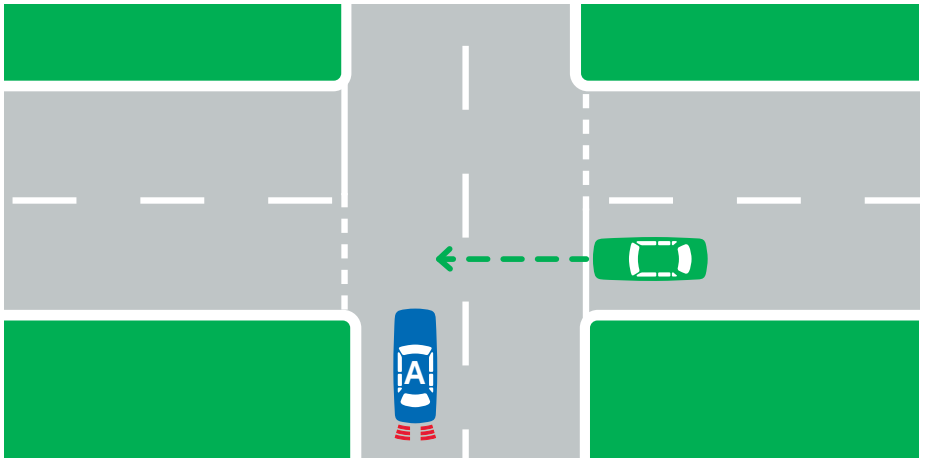
Respond before reaching the hazard.



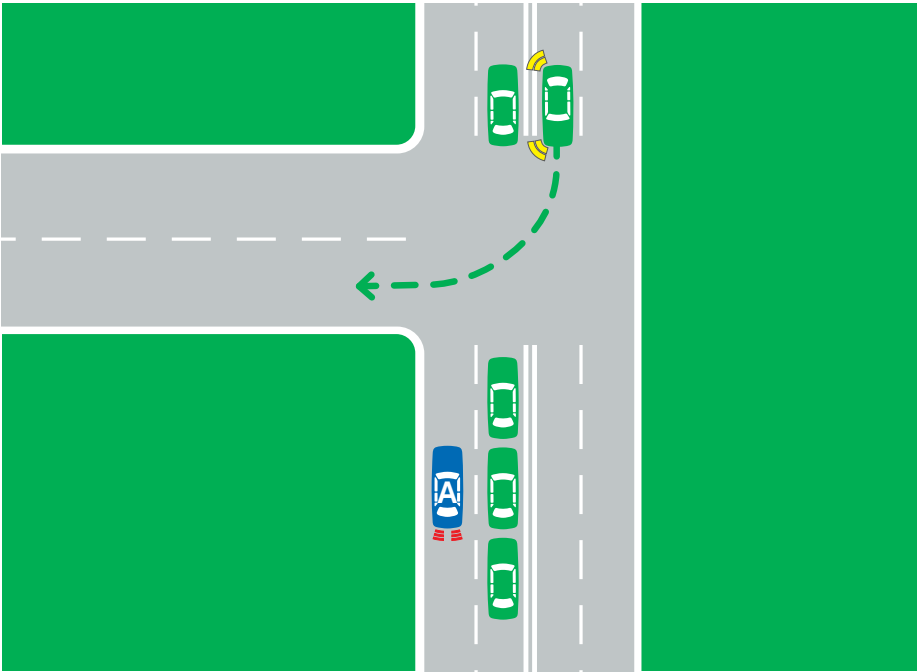
A vehicle waiting to turn in front of your path.



A vehicle waiting to pull out from the left side.



A vehicle waiting to pull out from the right side.



Stopped traffic obscuring vision at an intersection.

# Vehicle control

The ability to use the vehicle's controls in a range of driving situations.

---

## Operating the controls

The testing officer will observe and record some of these driving tasks:

- Seat posture and steering set-up, allow good control of the vehicle.
- Operate accelerator smoothly, when accelerating and decelerating.
- Operate brakes smoothly and effectively.
- Coordinate clutch and gear lever to make smooth gear changes.
- Select appropriate gears for driving, coming to a stop and parking.
- Avoid over-revving on take-off and gear changes.
- Seat belt correctly fastened, fitted and adjusted (low, flat and firm).
- Apply a brake when starting the vehicle.
- Prevent rolling back when starting on hills.
- Correct park brake use securing the vehicle and full release to drive.
- Steer with both hands on the outside of the steering wheel (except to use other controls), with either 'hand-over-hand' or the 'pull-push' method.
- Use other controls such as indicators, windscreen wipers and demisters.

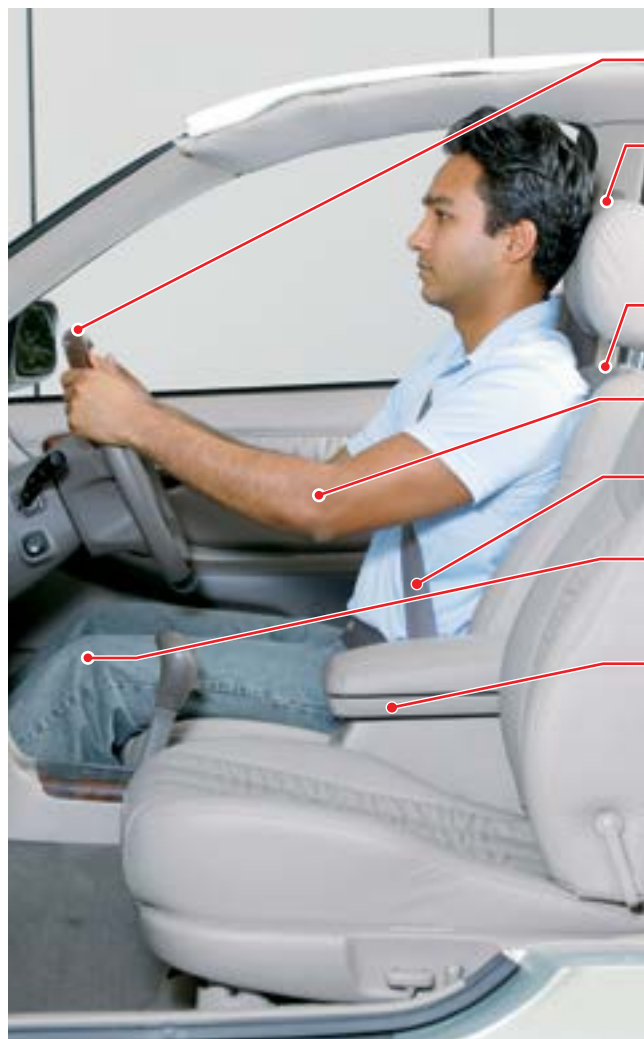
You must be confident using and operating the controls without being distracted.

This includes maintaining a steady speed and avoiding over-revving when taking off. If driving a manual car, change gears at a lower engine speed (revs).

You must signal for at least five seconds before leaving the kerb or a parked position.

Apply ecodriving techniques from the Road User Handbook to avoid vehicle control errors.

## Driving posture



Adjust your seat so you have a clear view of the road and can easily reach the controls.

The steering wheel should be adjusted low, facing your chest rather than the face.

Adjust the head restraint for your height. See owner's manual.

Adjust the mirrors so you have a good view of the rear and sides of the vehicle.

Have the seat upright to support your back and shoulders.

Keep your arms bent; thumbs should be on the rim of the steering wheel.

Wear your seatbelt 'low, flat and firm' on your hips and with no twists.

Keep your knees slightly bent.

Sit back in your seat.

Brace your body using your left foot.





# Test results

---

## Why you might fail

This guide shows examples of what you must do to drive safely and pass the test. However, some actions and behaviours are classed as fail items. If you do something that gets a fail, your test will continue so that you can be given a full assessment of your driving ability but you will not pass the test.

Here is a list of all the fail items along with some examples of how they may happen on a Driving Test.

Remember that this is only a guide and if you have any more questions you should refer to the Road User Handbook.

### 1. Disobeying traffic signs, signals or road markings

Be sure you have a thorough understanding of the meaning of regulatory signs, traffic signals and road markings. They tell you what road rules apply in any specific situation. Examples of a fail item include:

- Not stopping at a red traffic light. This means that all of your vehicle must be behind the stop line.
- Not stopping at a yellow traffic light when it is safe to do so. You must stop at a yellow light unless sudden braking might cause a crash.
- Not stopping correctly at a stop line. Your final stopped position must be within 1m of the stop line and with no part of your vehicle over the line.
- Crossing a continuous centre line, lane line or edge line unnecessarily.
- Disobeying lane markings (such as transit lanes and turn arrows).
- Not obeying regulatory signs such as One Way, No Entry, No U-Turn, Keep Clear and Keep Left.

## 2. Failing to give way when necessary

Examples of this fail item include:

- Not giving way to any vehicle that has priority over you at an intersection.
- Not giving way to pedestrians at marked crossings and intersections.
- Not giving way if required when entering a traffic stream, merging or lane changing.

## 3. Colliding with a vehicle, pedestrian or object

This includes mounting or straddling (one wheel either side of) a traffic dome and mounting the kerb or roundabout.

You will not fail if you touch the kerb face with your wheels.

## 4. Performing an illegal act or manoeuvre

An illegal act or manoeuvre is anything contrary to the Road Rules where a regulatory traffic sign, signal or road marking is not present. Examples of this fail item include:

- Unnecessarily driving on the wrong side of the road on unmarked roads.
- Turning from the incorrect position. For example, starting a left turn from the right lane.
- When turning left or right in an arrowed lane, you do not exit to a permissible lane.
- Stopping on a pedestrian crossing or stop line when giving way to pedestrians.
- Not driving in the left lane when required to do so.
- Making an unlawful U-Turn.
- Not using the correct lane to turn at a roundabout.
- Overtaking or passing a stationary vehicle at a pedestrian crossing.
- Entering a level crossing when unsafe to do so.
- Not wearing a seatbelt.
- Answering or using a mobile phone.

## 5. Exceeding the speed limit

The speed limit is the maximum allowable speed for that section of road under normal conditions. Exceeding the speed limit is dangerous and illegal. You will fail if you exceed the speed limit at any time including:

- The 40km/h limit at school zones during the hours of operation.
- The 40km/h limit when passing a bus with flashing lights the 40km/h limit when passing a stopped emergency vehicle with flashing blue or red lights, when the speed limit is 80km/h or less.
- The learner driver speed limit.
- Speed limits at road works.

## 6. Action requiring testing officer intervention

At this stage of your driving experience you should be able to drive without any help. If the testing officer has to give you verbal or physical assistance, including using the dual controls in an instructor's vehicle, you will fail.

## 7. Causing a dangerous situation

This fail item covers any unsafe act or behaviour that puts you or others at risk, such as overtaking in an unsafe manner, or giving way unnecessarily.

## 8. Failing to maintain proper control of the vehicle

This fail item applies to anything that could, or does, result in you losing control of the vehicle such as:

- Allowing the vehicle to roll back more than 500mm when moving off.
- Skidding or spinning the drive wheels.
- Clutch coasting (allowing the vehicle to roll along with your foot on the clutch) or coasting in neutral.
- Not maintaining effective control of the steering wheel.

## 9. Failing to exercise due care to avoid an accident

You must be ready at all times to respond to hazards. If a situation occurs requiring your response and you are not prepared, you will fail.

## 10. Failing to give way to an emergency vehicle

You will fail if you do not move out of the way of an emergency vehicle.

## 11. Disobeying directions from a person controlling traffic

This item includes failing to obey police, emergency services or armed forces personnel, traffic controllers (such as a flag person at road works) and pilot vehicles.

## 12. Frequently not signalling intention

You will fail if you repeatedly do not signal when legally required to do so.

You must signal:

- to give sufficient warning to other road users of your intentions when turning left or right
- for at least five seconds before leaving the kerb
- for at least five seconds before leaving a parking space
- when changing lanes, diverging or pulling over to the kerb
- when exiting a roundabout.

## 13. Refusing to attempt any part of the test

You are required to complete the whole test to get a pass. You can be failed for refusing to do any part of the test.

## 14. Repeated or deliberate failure to follow directions

You must follow all reasonable directions given to you by the testing officer during the test.

## 15. Unreasonably obstructing other vehicles or pedestrians

You will fail if you unreasonably obstruct other vehicles or pedestrians during the test. This includes if you:

- enter an intersection without enough space on the other side due to traffic, blocking the intersection as a result
- drive significantly below the speed limit when prevailing conditions do not require it.

## 16. Receiving external advice or instruction during the test

You will fail if you receive any external advice from a third party at any time during the test. This includes the time from when you sign the score sheet, to getting into your vehicle.

## 17. Not parking to the required standard

During the manoeuvres you will fail if:

- the final position of your car is more than 1m from the kerb or obstructing traffic
- your wheels are on or over marked parking lines
- you reverse more than 7m from the vehicle in front during the reverse park section of the test.

## 18. Failing to maintain a safe following distance

You will fail if you follow too closely to the vehicle in front.

## 19. Frequently not performing observation checks

You will incur this fail item if you repeatedly miss observation checks when required. Specifically this fail item applies to checking your blind spots when you:

- leave or return to the kerb
- merge, diverge or change lanes
- are about to reverse, such as in a reverse parallel park and 3 point turn
- turn at intersections, leave or join the road
- cross lanes within a roundabout on exiting.

You must turn your head and check it is safe to proceed when moving off after being stopped at traffic lights and railway level crossings.

## Immediate fail

In most circumstances, even if you commit a fail item, your test will continue and you will be given a full assessment of your performance. In some circumstances the testing officer may record an **immediate fail**. You will not be permitted to finish the test and the testing officer may drive you back to the service centre.

An immediate fail may occur if:

- you do anything which is unsafe or dangerous and there is an obvious danger to the public
- you refuse to cooperate with the testing officer and so cannot be given a proper test.

## Test termination

While ‘immediate fail’ criteria applies to issues concerning driving ability, termination criteria applies to situations not concerned with the applicant’s driving performance.

Your test will be terminated if any of the items below cannot be rectified at the time of the test:

1. The testing vehicle
  - is not suitable for safe use
  - indicator lights (including side repeaters) or brake lights do not operate, are incomplete, dirty or discoloured
  - tyres are not in a satisfactory condition
  - is not registered
  - windscreen cracked or broken so as to obscure driver’s and/or testing officer’s vision, (not including minor cracks)
  - has a complying (approved and in working condition) lap/sash seat belt is not fitted for the testing officer
  - head restraints are not fitted (vehicle manufactured after 1 January 1972)
  - is not suitable for class of licence
  - is not suitable for type of disability
  - has sharp edges caused by body damage
  - has any mirror broken or damaged to the extent that it distorts vision

- has any wheel rim excessively damaged
  - has any visible wheel nuts missing
  - has any excessive under body fluid leaks
  - dual brake (if fitted) **must** be operational
  - dual accelerator (if fitted) **must not** be operational (dual accelerator must be secured out of reach or rendered inoperable)
  - front passenger door handle (either inside or outside), or window handle, is missing or inoperative
  - does not have solid front doors (cloth or fabric doors are not acceptable)
  - is a convertible or Targa top and the roof is not capable of being covered in, at the request of the testing officer or in the event of bad weather.
2. The testing vehicle is unsuitable for the class of licence test.  
This includes a vehicle with equipment that can record any aspect of the Driving Test including, visual images, sounds or the vehicle's position.
  3. The testing vehicle is not suitable for the type of disability.
  4. The testing vehicle breaks down during the test, or a large number of assessments are missed while off the test course.
  5. The applicant demonstrates unacceptable, inappropriate or unlawful behaviours, include:
    - A bribe or inducement is offered, or any other form of corrupt conduct is suggested.
    - Extreme emotional pleas, threats or sexual advances in an attempt to influence a test result (a warning may be given if required).
    - Repeated and persistent requests to ignore an error (A warning may be given if required).
    - Threatening, abusive, aggressive or violent behaviours.
  6. The driver is or is suspected to be under the influence of drugs or alcohol.
  7. A crash occurs during the test, regardless of who is at fault.
  8. The applicant is ill, to the extent that they may not be able to drive safely.
  9. Weather conditions are bad and make the driving task too demanding.  
If the test is terminated the test fee may not be refunded.
  10. Learner Driver Log Book or digital learner driver log book app not complete or submitted in accordance with requirements.

You must secure any loose objects in the vehicle that may interfere with vehicle control or cause injury during hard braking.

---

## What happens after the test?

When you return to the service centre the testing officer will ask you to wait inside whilst they calculate your test result.

Then the testing officer will call you to the counter and tell you your test result. You will also receive a test report, showing your score and any notes on how to improve your driving skills.

If you did not pass, your testing officer will provide general comments about your result. They cannot discuss situations or events from the test, as it is not their job to give you a driving lesson. A driving instructor or supervising driver can help to improve your driving, so you can try again.

If you believe the test was unfair or bias, contact the manager from your test service centre. They will look into your complaint and discuss the matter with you.

You can book and pay for another test before leaving the service centre or do it later online at **[service.nsw.gov.au](https://service.nsw.gov.au)**

If you passed, you will need to pay for your P1 licence. Congratulations and safe driving!

Regardless of whether you pass or fail the Driving Test, it is best to allow your supervising driver to take over the driving when you leave the service centre. This is because after taking the test many learners find it hard to concentrate on driving because they are either elated or disappointed by the result.



# Test score sheet

## Class C Car Driving Test



Test started  Applicant signature

24-hour time

Test vehicle plate no.  Name of driving instructor

State  Name of driving school

Driving instructor licence number  Driving school number

Instructor vehicle ☐ Other vehicle ☐ Automatic ☐ Manual ☐

### Termination

1 ☐ 2 ☐ 3 ☐ 4 ☐ 5 ☐ 6 ☐ 7 ☐ 8 ☐ 9 ☐ 10 ☐

Test not conducted/terminated/  
immediate fail because:

Manager verifying reason

### F IF Fail and Immediate Fail items

|                          |                          |   |
|--------------------------|--------------------------|---|
| <input type="checkbox"/> | <input type="checkbox"/> | 1. Disobeying traffic signs, signals or road markings.                                |
| <input type="checkbox"/> | <input type="checkbox"/> | 2. Failing to give way when necessary.  |
| <input type="checkbox"/> | <input type="checkbox"/> | 3. Colliding with a vehicle, pedestrian or object.                                    |
| <input type="checkbox"/> | <input type="checkbox"/> | 4. Performing an illegal act or manoeuvre.  |
| <input type="checkbox"/> | <input type="checkbox"/> | 5. Exceeding the speed limit.   |
| <input type="checkbox"/> | <input type="checkbox"/> | 6. Action requiring testing officer intervention.                                     |
| <input type="checkbox"/> | <input type="checkbox"/> | 7. Causing a dangerous situation.   |
| <input type="checkbox"/> | <input type="checkbox"/> | 8. Failing to maintain proper control of the vehicle.                                 |
| <input type="checkbox"/> | <input type="checkbox"/> | 9. Failing to exercise due care to avoid an accident.                                 |
| <input type="checkbox"/> | <input type="checkbox"/> | 10. Failing to give way to an emergency vehicle.                                      |
| <input type="checkbox"/> | <input type="checkbox"/> | 11. Disobeying directions from a person controlling traffic.                          |
| <input type="checkbox"/> | <input type="checkbox"/> | 12. Frequently not signalling intention. Total <input type="checkbox"/>               |
| <input type="checkbox"/> | <input type="checkbox"/> | 13. Refusing to attempt any part of the test.   |
| <input type="checkbox"/> | <input type="checkbox"/> | 14. Repeated or deliberate failure to follow directions.                              |
| <input type="checkbox"/> | <input type="checkbox"/> | 15. Unreasonably obstructing other vehicles or pedestrians.                           |
| <input type="checkbox"/> | <input type="checkbox"/> | 16. Receiving external advice or instruction during the test.                         |
| <input type="checkbox"/> | <input type="checkbox"/> | 17. Not parking to the required standard.   |
| <input type="checkbox"/> | <input type="checkbox"/> | 18. Failing to maintain a safe following distance.                                    |
| <input type="checkbox"/> | <input type="checkbox"/> | 19. Frequently not making required observation checks. Total <input type="checkbox"/> |

My result has been explained to me.

Applicant signature  Date

Day / Month / Year

| Assessment and feedback |    |    |     |   |   |    | Notes |
|-------------------------|----|----|-----|---|---|----|-------|
| S                       | P  | D  | Z   | H | R | C  |       |
| S                       | P  | D  | 1   | H | R | C  |       |
| S                       | P  | D  | 2   | H | R | C  |       |
| S                       | P  | D  | 3   | H | R | C  |       |
| S                       | P  | D  | 4   | H | R | C  |       |
| S                       | P  | D  | 5   | H | R | C  |       |
| S                       | P  | D  | 6   | H | R | C  |       |
| S                       | P  | D  | 7   | H | R | C  |       |
| S                       | P  | D  | 8   | H | R | C  |       |
| S                       | P  | D  | 9   | H | R | C  |       |
| S                       | P  | D  | 10  | H | R | C  |       |
| S                       | P  | D  | 11  | H | R | C  |       |
| S                       | P  | D  | 12  | H | R | C  |       |
| S                       | P  | D  | 13  | H | R | C  |       |
| S                       | P  | D  | 14  | H | R | C  |       |
| S                       | P  | D  | 15  | H | R | C  |       |
| S                       | P  | D  | 16  | H | R | C  |       |
| S                       | P  | D  | 17  | H | R | C  |       |
| S                       | P  | D  | 18  | H | R | C  |       |
| S                       | P  | D  | 19  | H | R | C  |       |
| S                       | P  | D  | 20  | H | R | C  |       |
| S                       | P  | D  | 21  | H | R | C  |       |
| S                       | P  | D  | 22  | H | R | C  |       |
| S                       | P  | D  | 23  | H | R | C  |       |
| S                       | P  | D  | 24  | H | R | C  |       |
| S                       | P  | D  | 25  | H | R | C  |       |
|                         |    |    | Yes |   |   |    |       |
|                         |    |    | No  |   |   |    |       |
| 25                      | 25 | 25 |     |   |   | 25 |       |
| Totals                  |    |    |     |   |   |    |       |

### Results

☐ Pass ☐ Fail ☐ Number of 'fail' items

Office use

24-hour time

I certify that I have tested  
the applicant in line with  
Transport for NSW procedures.

CSRDT signature

Percentage range

Catalogue No. 45071250  
Form No. 1408 (02/2026)

OFFICIAL: Sensitive - Personal (when completed)

# Test feedback (reverse of score sheet)

## Assessment and feedback

A 'circle' in the assessment and feedback columns indicate further practice is needed.

### Speed management (S)

The driver demonstrates their ability to manage speed and maintain a crash avoidance space.

1. Maintains space to the front:
  - with a gap of at least 3 seconds when following another vehicle and increases the gap in poor conditions
  - when stationary behind another vehicle.
2. Reduces speed:
  - when vision is limited (for example blind crests and curves)
  - when space to the side is limited.
3. Maintains traffic flow:
  - when traffic, weather and road conditions allow.

### Road positioning (P)

The driver demonstrates their ability to position the vehicle by selecting a safe and legal path of travel.

1. Buffering by:
  - maintaining space from parked and oncoming vehicles
  - moving left on crests and curves
  - avoiding driving in the blind spots of other vehicles.
2. Intersections:
  - are approached and exited in a safe and legal manner.
3. Manoeuvres:
  - parks at required angle, close to the kerb (including start of three-point turn)
  - maintains sufficient distance (between 1 and 2m) from other vehicles.

### Decision making (D)

The driver demonstrates the ability to select a safe and legal gap.

1. When joining the traffic flow, lane changing, merging, diverging and manoeuvring:
  - chooses a safe and legal gap at intersections, leaving the kerb, changing lanes and merging.
2. When crossing the traffic flow:
  - clears the intersection 3 seconds before another vehicle arrives.

The driver performs the necessary observation checks.

1. When joining the traffic flow, lane changing, merging, diverging, manoeuvring and proceeding through traffic lights.

### Hazards (H)

Hazards were present and capable of moving into the path of the applicant's vehicle.

### Responding to hazards (R)

The driver demonstrates their ability to protect their crash avoidance space by responding to hazards with one, or a combination of, the following actions.

1. Responds by managing speed, 'sets up' or 'covers' brakes, slowing down.
2. Responds by managing position, buffers away from hazard.

### Vehicle control (C)

The driver demonstrates the ability to maintain smooth and efficient control of the vehicle by correct seat adjustment, use of the accelerator, brakes, clutch, gears, steering, auxiliary controls and signals.

#### Codes in 'Notes' column:

- (K) Kerb side stop
- (M) Manoeuvre
- (H) Observation error. Fail Item 19
- (F) Fail Items
- (T) Termination.

#### Control errors:

- (A) Applicant posture, seat belt
- (B) Brake, clutch, gears, accelerator
- (C) Course, steering
- (D) Dashboard controls, instruments, gauges
- (E) Eco driving
- (S) Signal error. Fail Item 12.

### Need more information

All these driving skills are covered in A Guide to the Driving Test.

### Personal Information Collection Notice

Transport for NSW is committed to protecting your privacy and ensuring your personal and health information is managed according to law. You can find out why we collect your personal information and how we use and manage it by reading our privacy statement at [transport.nsw.gov.au](https://transport.nsw.gov.au) or call 13 22 13 to request a copy.

# Tips for new provisional drivers

The crash rate of learner drivers is actually very low, partly due to the guidance provided by the supervising driver. However, as a newly licensed provisional driver driving without this supervision, the risk of crashing is significantly greater.

## Night driving

Take extra care driving at night. Provisional drivers have a higher risk of crashing at night, particularly on Thursday, Friday and Saturday nights.

## Passenger influences

In the first 12 months of provisional driving ask passengers to help identify hazards and support you to focus on driving.







---










## Provisional licence driver restrictions









There are restrictions you must follow when you drive with a:

- **Provisional P1 licence (red P)**
- **Provisional P2 licence (green P).**

These restrictions are in place to help keep you safe as you develop your driving skills. They also apply when you drive in another state or territory. If you do not follow these restrictions, you'll get a fine. You can also get demerit points or even lose your licence.

| Restriction   | Applies to  |
|---|---|
| <b>Alcohol limit</b><br>Your blood alcohol concentration (BAC) must be zero.<br>This means you must not have any alcohol in your system when you drive.   |   |
| <b>Maximum speed limit</b><br>You can drive to a maximum of 90km/h.<br>You must observe all speed limits below 90km/h.  |    |
| You can drive to a maximum of 100km/h.<br>You must observe all speed limits below 100km/h.  |    |
| <b>Mobile phone use</b><br>You must not use a mobile phone while driving, even when you're stationary, for example, stopped at lights or stuck in traffic. This includes: <ul style="list-style-type: none"> <li>• texting</li> <li>• phone calls</li> <li>• music</li> <li>• emailing</li> <li>• social media</li> <li>• using the internet</li> <li>• maps</li> <li>• photography.</li> </ul> The only time you can use your phone is to: <ul style="list-style-type: none"> <li>• show your digital driver licence when instructed by police</li> <li>• use wallet functions to make a transaction or show a voucher, but only in areas such as a car park, driveway or drive-through and if the vehicle is stationary.</li> </ul> |   |

| Restriction   | Applies to   |
|---|--|
| <p><b>Number of passengers</b></p> <p>You can carry only the number of passengers that you have seatbelts and approved and suitable child car seats for.</p>  |     |
| <p>If you return to driving after being disqualified, you can only carry one passenger at a time, for 12 months.</p>  |     |
| <p>If you are aged under 25, between 11pm and 5am, only one of your passengers can be aged under 21. Exemptions may apply.</p>  |   |
| <p><b>High-performance cars</b></p> <p>You must not drive high-performance cars, such as those:</p> <ul style="list-style-type: none"> <li>• with a power to mass ratio greater than 130 kilowatts per tonne</li> <li>• with significant modifications made to the vehicle's engine</li> <li>• that are listed as a banned high-performance vehicle.</li> </ul> <p>Visit <b>nsw.gov.au</b> for the full list of banned high-performance cars.</p> |     |
| <p>There's no restriction on learning to drive in a high-performance car.</p>   |  |
| <p><b>Displaying P plates</b></p> <p>You must clearly display plates on the front and back, or roof, of the exterior of the vehicle you're driving.</p> <p>P1 drivers must display a red P plate.</p> <p>P2 drivers must display a green P plate.</p> <p>The whole letter P must be visible.</p> <p>Secure your plates with a clip or holder so they do not fall off. This ensures they do not become litter and stay visible at all times.</p>   |   |

| Restriction   | Applies to  |
|---|---|
| <b>Being supervised</b><br>You do not need to be supervised.<br><br>The exception is if you passed your Driving Test in an automatic car and want to drive a manual car.  |    |
| <br>You do not need to be supervised.   |    |
| <b>Supervising a learner</b><br>You must not supervise or instruct a learner driver.  |   |
| <b>Towing a trailer</b><br>You can tow light trailers that weigh up to 250kg when empty.<br><br>A red P plate must be on the back of the trailer.   |    |
| <br>Full licence towing rules apply.<br><br>A green P plate must be on the back of the trailer.   |    |
| <b>Manual or automatic cars</b><br>If you passed your Driving Test in a manual car, you can drive either a manual or an automatic car.<br><br>If you passed your Driving Test in an automatic car, you can only drive an automatic car, unless supervised in a manual car by someone with a full Australian driver licence. |    |
| <br>There's no restriction: you can drive either an automatic or manual car.  |    |





ISBN 978-1-877070-15-0  
Pub. 07.047  
Catalogue number 45071261  
06/25

**Disclaimer**

While all care is taken in producing this work, no responsibility is taken or warranty made with respect to the accuracy of any information, data or representation. This work is not intended to substitute a reader's reference to relevant laws and Transport for NSW expressly disclaims all liability in respect of the consequences of reliance on the contents of this work.

**© Transport for New South Wales (2025)**

Users are welcome to copy, reproduce and distribute extracts from this work for non-commercial purposes only, provided Transport for NSW is acknowledged as the copyright owner and the title of this work is referenced as the source.