



RICHMOND VALLEY REGIONAL JOB PRECINCT

The NSW Government's Regional Job Precincts will provide planning support to help fast-track approvals to drive growth, investment and development opportunities within regional NSW.

Four locations have been chosen for the first round of this initiative: **Albury, Richmond Valley, South Jerrabomberra and Namoi.**

The Richmond Valley Regional Job Precinct will investigate opportunities in the Casino area to create a hub focused on high-value agriculture, food processing, manufacturing, distribution and renewable energy, to create more jobs for the region.

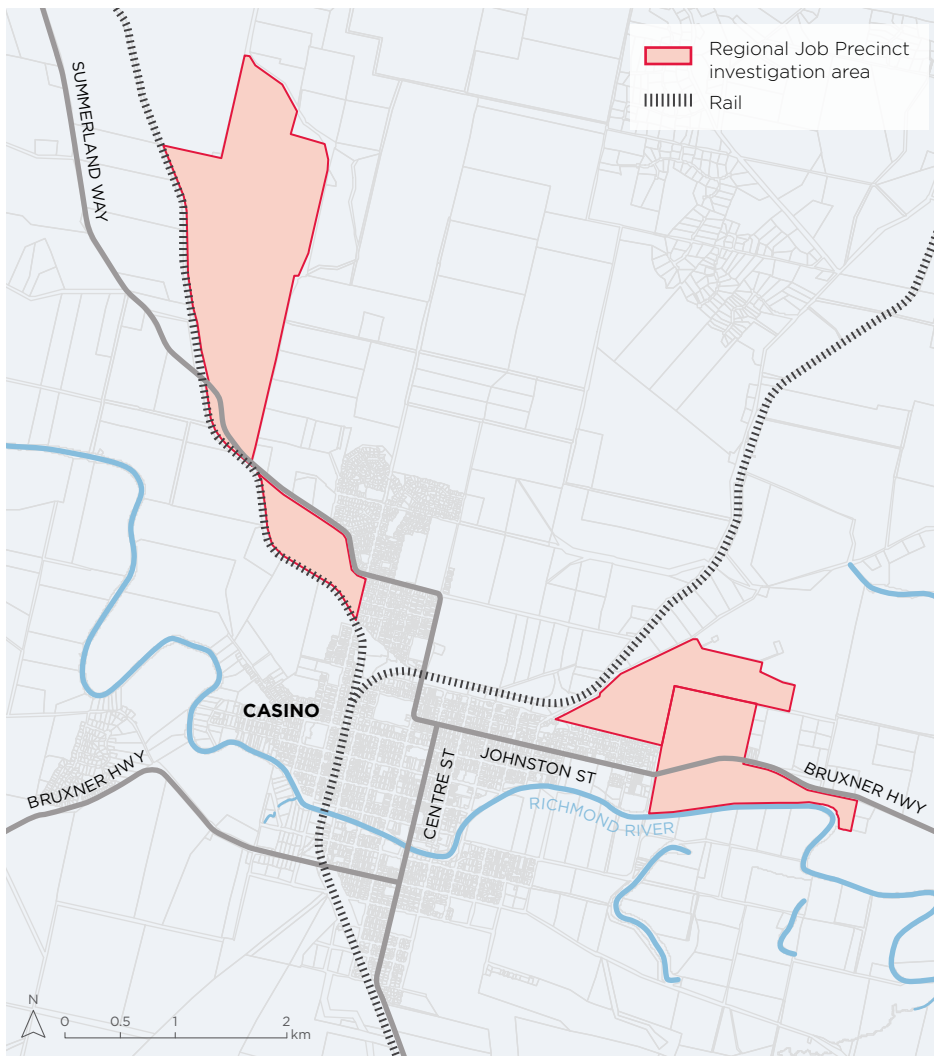
The investigations will help to inform planning for a possible energy from waste facility, which is a separate project to the Regional Job Precinct.

WHAT BENEFITS WILL THIS BRING TO THE RICHMOND VALLEY REGION?

The NSW Government is working closely with Richmond Valley Council, key government agencies and local industry to remove barriers to businesses setting-up in the precinct, to drive local economic development and provide greater certainty for investors.

The precinct will offer improved planning pathways, underpinned by appropriate studies and technical information. By reducing delays and simplifying planning processes, the precinct will attract investment and diversify business opportunities, creating jobs for the young and a skilled and growing local workforce in Casino.

The aim is to foster new and emerging businesses, facilitate interactions between operators, identify labour and resource needs, and generate economies of scale to assist with business diversification and to create value-adding opportunities for existing industries and local producers.



WHERE IS THE RICHMOND VALLEY REGIONAL JOB PRECINCT LOCATED?

The Richmond Valley Regional Job Precinct is located at the intersection of the Bruxner Highway, that serves as the east-west link between the Northern Rivers coast to the Northern Tablelands and Summerland Way, which serves as a north-south link between Grafton and the Queensland border. It is also connected to key coastal centres and markets by the North Coast railway line.

The Richmond Valley Regional Job Precinct will activate several locations within a specialised industry cluster in Casino. The map opposite outlines the investigation area.

The Regional Job Precinct includes land that is already developed or approved for development, including Nammoona Industrial Area, Casino Food Co-op Complex (formerly Northern Co-op Meat Company), Richmond Valley Sewage Treatment Plant and surrounds, and Johnston Street Industrial Area.

UPDATE ON PROGRESS

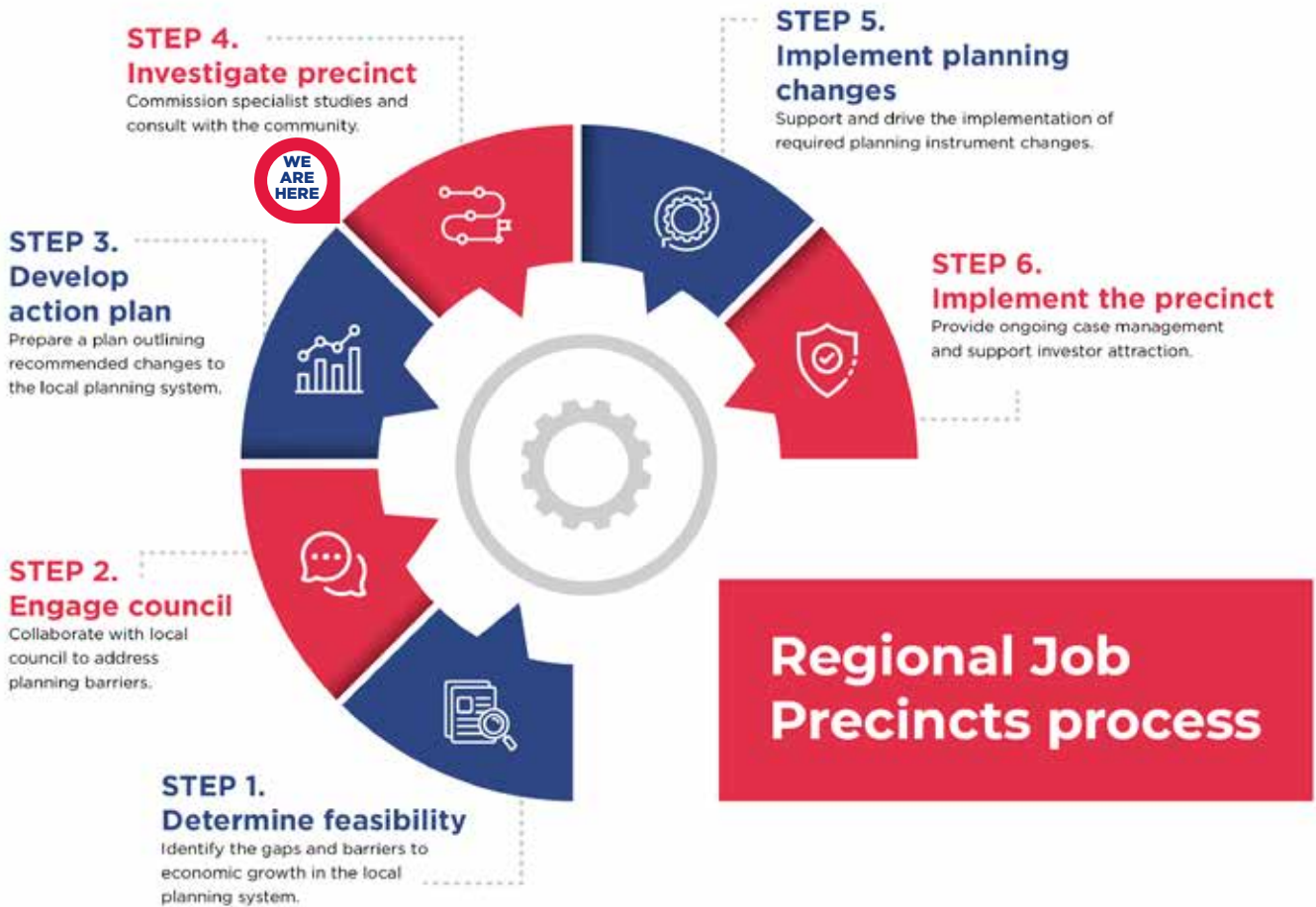
Since the announcement of the Richmond Valley Regional Job Precinct in February 2021, the NSW Government has been working with key government agencies, business stakeholders and Richmond Valley Council to identify barriers to development as well as opportunities for growth.

This includes identifying gaps and opportunities for improving local planning processes before developing a plan of action, analysis of the precinct's boundary and technical studies to provide certainty for future development.

The Richmond Valley precinct is progressing well – the action plan is being finalised (step three in the diagram on the following page) and more detailed investigations have commenced to prepare a Master Plan for the Precinct in consultation with Council and the community.



The Boer War Memorial erected in Casino in 1901 commemorates local soldiers who fought in the Boer Wars, courtesy of Destination NSW



WHAT ARE THE NEXT STEPS?

The NSW Government is now conducting technical studies including infrastructure and environmental studies to ensure future development is well planned and respectful to the environment. Studies will also include an assessment of Aboriginal cultural heritage values in consultation with local Aboriginal communities. This will support work already underway by Richmond Valley Council in preparing a new Urban Growth Management Strategy.

The studies will consider biodiversity, bushfire, contamination, air, noise, odour, land use safety, stormwater drainage and groundwater studies.

The NSW Government is currently managing a tender process to carry out these technical studies.

COMMUNITY FEEDBACK

Community members will have an opportunity to provide feedback on the draft master plan for the Regional Job Precinct in coming months. Updates on upcoming community engagement activities will be largely driven by Richmond Valley Council and communicated across Council and NSW Government channels.

FURTHER INFORMATION

For further information and to subscribe to Regional Job Precinct program updates, please email the project team. Further updates will be published on the website below.

@ regionaljobprecincts@regional.nsw.gov.au

≡ www.nsw.gov.au/regionaljobprecincts