



SOUTH JERRABOMBERRA REGIONAL JOB PRECINCT

The NSW Government's Regional Job Precincts will provide planning support to help fast-track approvals to drive growth, investment and development opportunities within regional NSW.

Four locations have been chosen for the first round of this initiative:
Albury, Richmond Valley, South Jerrabomberra and Namoi.

The South Jerrabomberra Regional Job Precinct will leverage opportunities associated with the Poplars Innovation Precinct to create a hub of defence, space, cyber-security, information technology and scientific research.

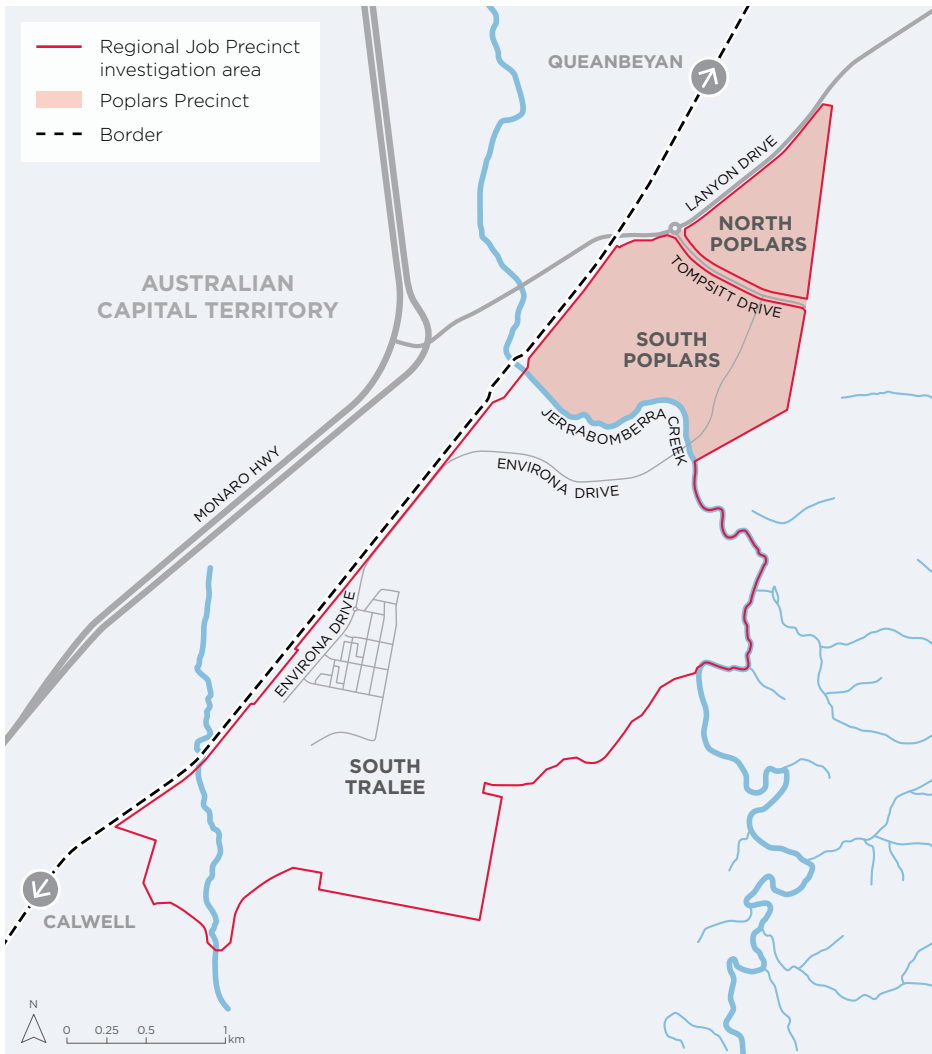
WHAT BENEFITS WILL THIS BRING TO THE CAPITAL REGION?

The NSW Government is working closely with Queanbeyan-Palerang Regional Council, the ACT Government and federal agencies to remove barriers to businesses setting-up in the precinct, to drive local economic development and provide greater certainty for investors.

The precinct will offer an improved planning pathway, underpinned by appropriate studies and technical information and will help to facilitate cross-border planning.

By reducing delays and simplifying planning processes, the precinct will attract investment in a variety of industry sectors, with the aim of becoming the largest technology and industrial precinct across the broader Canberra region.





WHERE IS THE SOUTH JERRABOMBERRA REGIONAL JOB PRECINCT LOCATED?

The South Jerrabomberra Regional Job Precinct comprises several parcels of land bordering the ACT. These parcels of land have the potential to be activated and possibly expanded to become sub-precincts that may include a technology park, industrial estate, business innovation hub, regional sports hub, new high school and a potential freight and logistic hub.

The initial boundary of the investigation area includes 950 hectares of land, located approximately 5.5km south of Queanbeyan, bordering the ACT and existing Hume Industrial Estate. This area includes land that is already developed or approved for development so that infrastructure and environmental factors can be properly considered as part of planning for the precinct. The Poplars Innovation Precinct is located in the northern part of the investigation area. The map above outlines the investigation area.



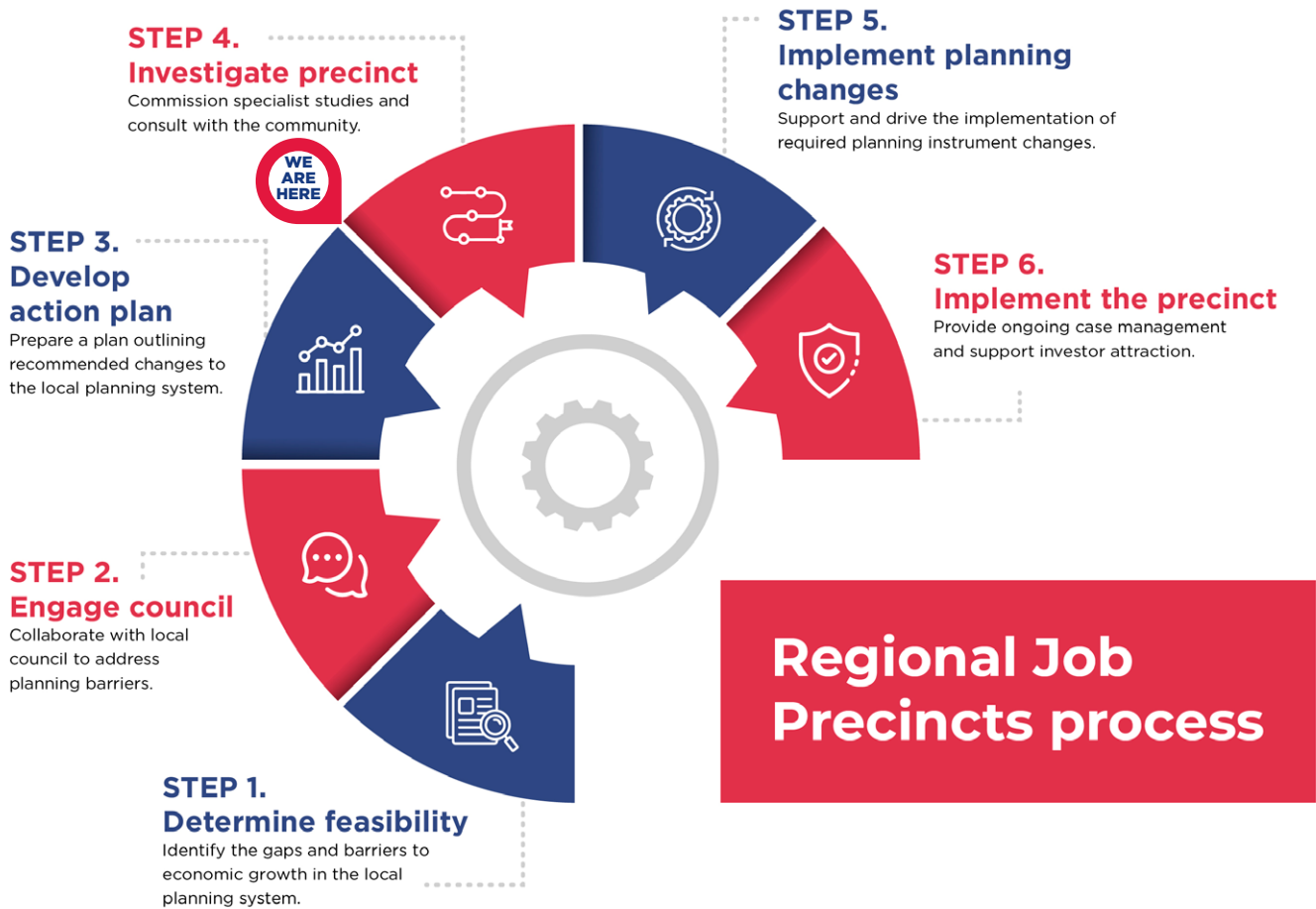
View of the new access road looking south

UPDATE ON PROGRESS

Since the announcement of the South Jerrabomberra Regional Job Precinct in March 2021, the NSW Government has been working with key government agencies, business stakeholders and Queanbeyan-Palerang Regional Council to identify barriers to development as well as opportunities for growth.

This includes analysis of the precinct's boundary, technical studies and utility requirements as well as the delivery of a detailed action plan, which outlines recommendations to improve planning pathways to simplify and provide certainty for future development.

The South Jerrabomberra precinct is progressing well – the action plan is being finalised (step three in the diagram on the following page):



WHAT ARE THE NEXT STEPS?

The NSW Government is now conducting technical studies as part of this work to create a master plan that builds on the work that has already been done for the Poplars Innovation Precinct. This includes reviewing infrastructure capacity to support future growth, environmental and biodiversity studies as well as reviewing employment land needs and zoning.

Other technical studies will include Aboriginal heritage, bushfire, contamination, air, noise, odour, traffic and transport, utilities and water studies.

The NSW Government is currently managing a tender process to carry out these technical studies.

COMMUNITY FEEDBACK

Community members will soon have an opportunity to provide feedback on proposed changes for the Regional Job Precinct. Updates on upcoming community engagement activities will be largely driven by Queanbeyan-Palerang Regional Council and communicated across Council and NSW Government channels.

FURTHER INFORMATION

For further information and to subscribe to Regional Job Precinct program updates, please email the project team. Further updates will be published on the website below.

@ regionaljobprecincts@regional.nsw.gov.au

≡ www.nsw.gov.au/regionaljobprecincts