



# Mapping

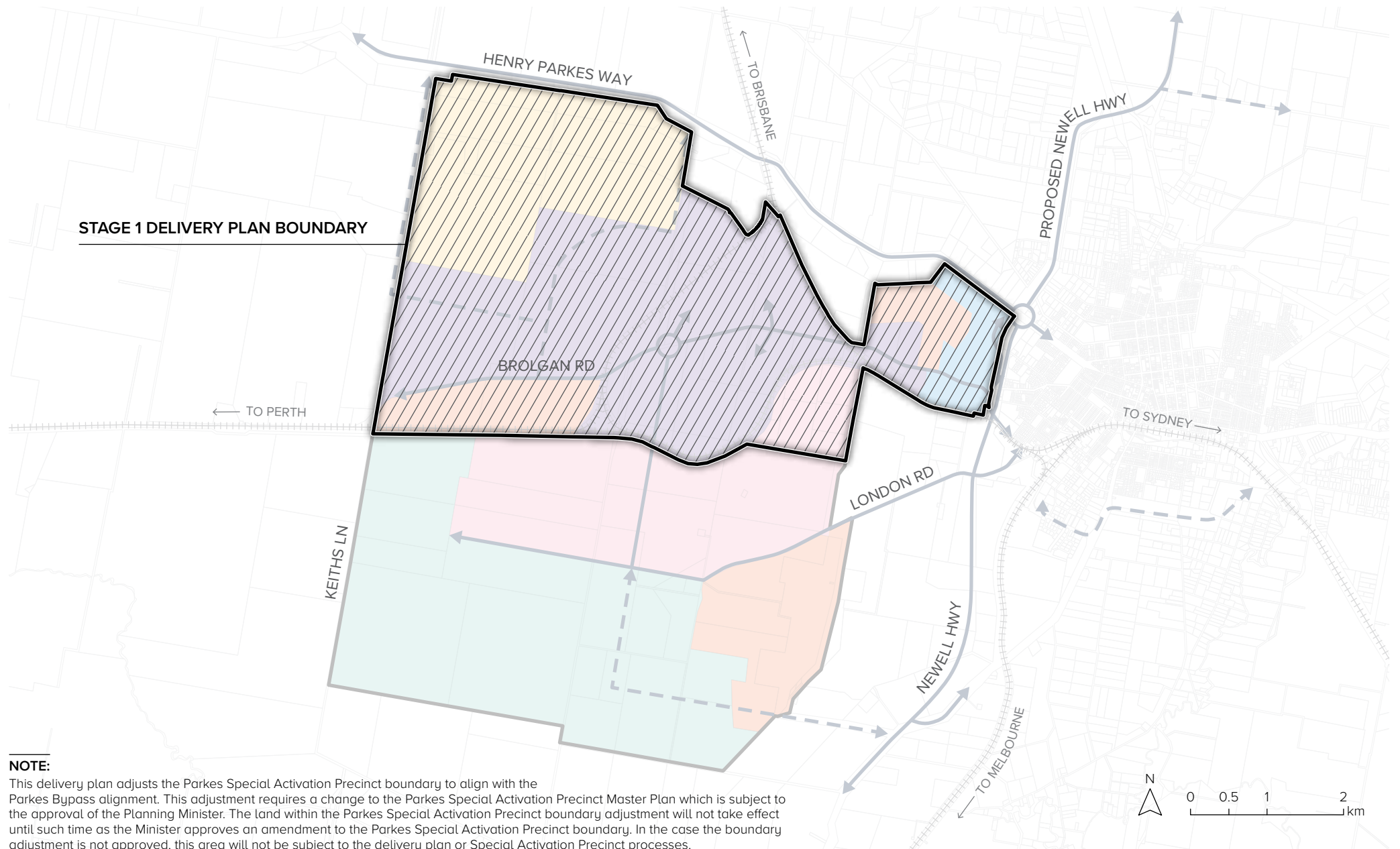
6

**This section contains mapping of elements within the Parkes precinct which support the vision and desired development outcomes.**



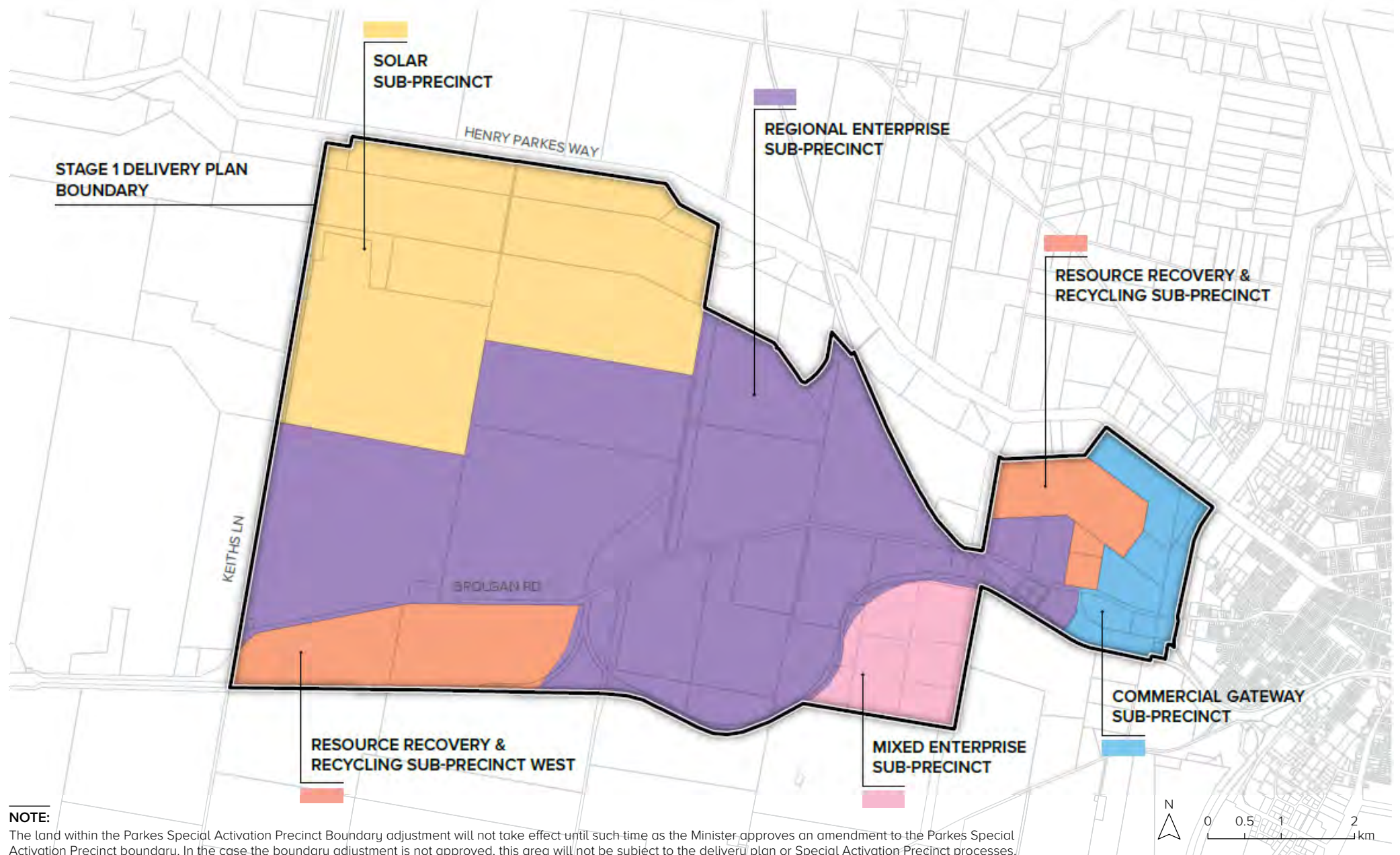
- 6.1 Stage 1 delivery plan boundary
- 6.2 Master plan sub-precincts
- 6.3 Intermodal and rail terminal facilities overlay
- 6.4 High value vegetation and paddock trees
- 6.5 Trails and nodes
- 6.6 Flood planning constraint categories
- 6.7 Flood planning levels
- 6.8 Flood planning area (1% AEP event + 300mm freeboard)
- 6.9 Preferred stack locations
- 6.10 Odour overlay
- 6.11 Existing and future bushfire risk areas
- 6.12 Stage 1 enabling works
- 6.13 Road network and landmark buildings

# 6.1 Stage 1 delivery plan boundary



**NOTE:**  
This delivery plan adjusts the Parkes Special Activation Precinct boundary to align with the Parkes Bypass alignment. This adjustment requires a change to the Parkes Special Activation Precinct Master Plan which is subject to the approval of the Planning Minister. The land within the Parkes Special Activation Precinct boundary adjustment will not take effect until such time as the Minister approves an amendment to the Parkes Special Activation Precinct boundary. In the case the boundary adjustment is not approved, this area will not be subject to the delivery plan or Special Activation Precinct processes.

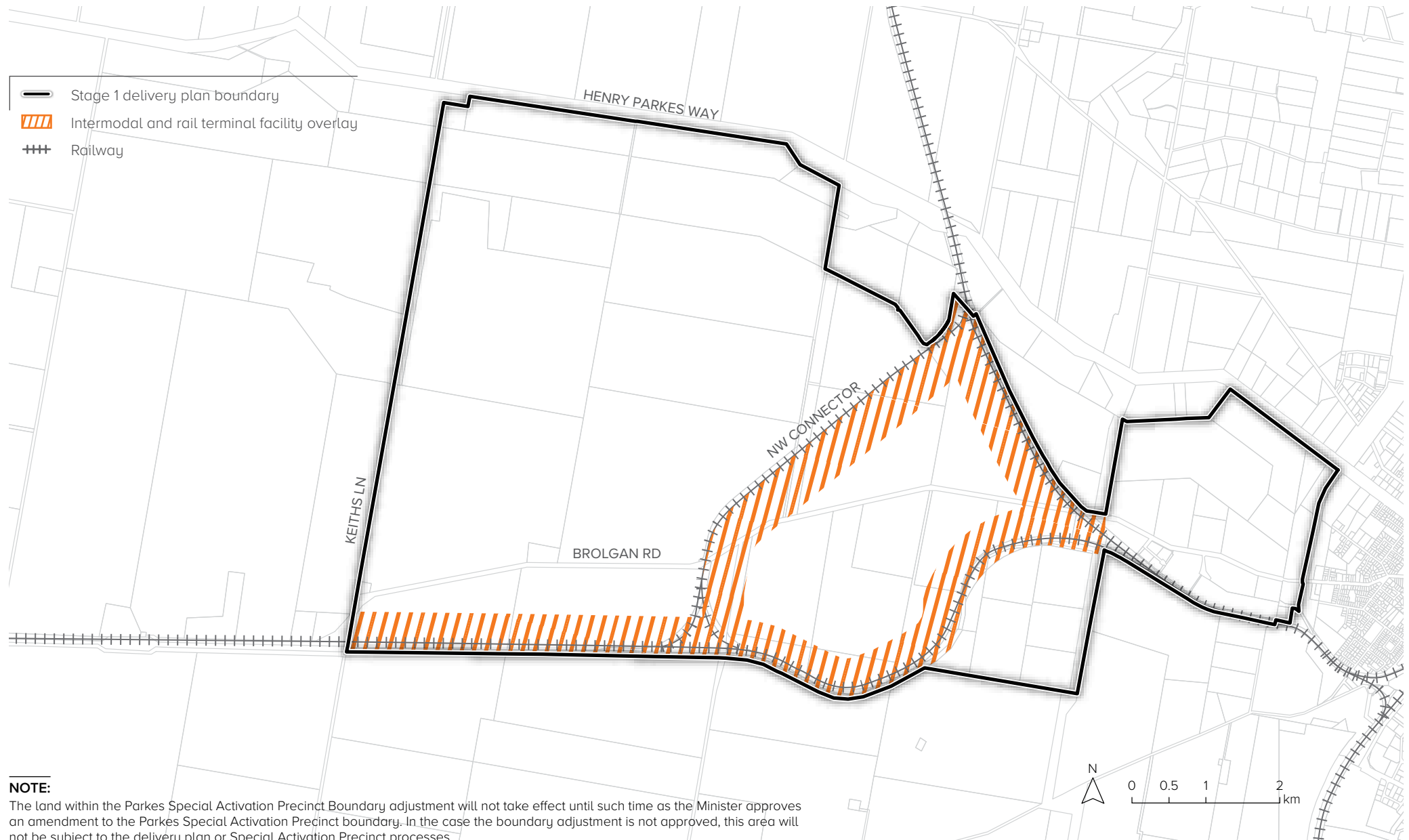
## 6.2 Master plan sub-precincts



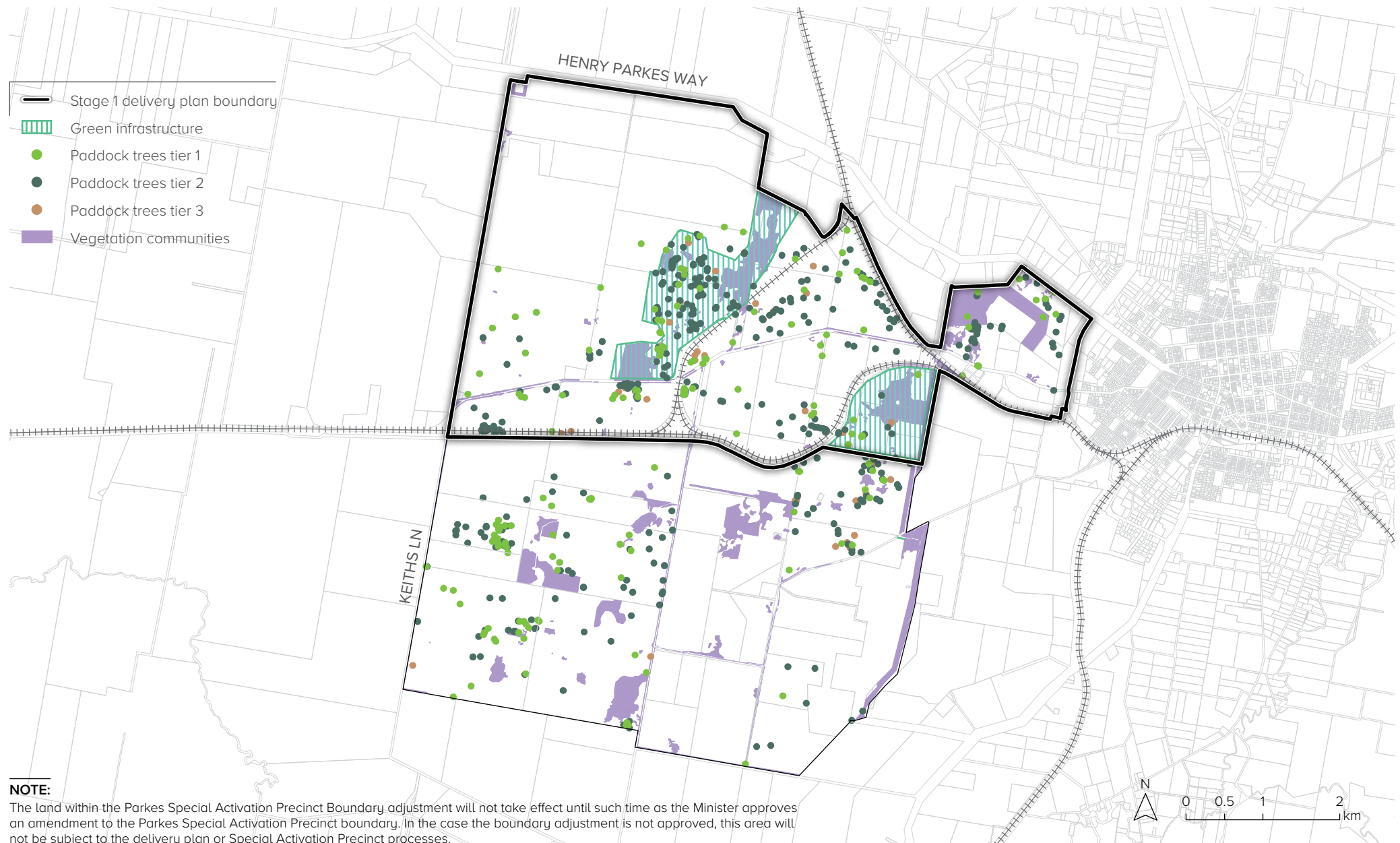
**NOTE:**

The land within the Parkes Special Activation Precinct Boundary adjustment will not take effect until such time as the Minister approves an amendment to the Parkes Special Activation Precinct boundary. In the case the boundary adjustment is not approved, this area will not be subject to the delivery plan or Special Activation Precinct processes.

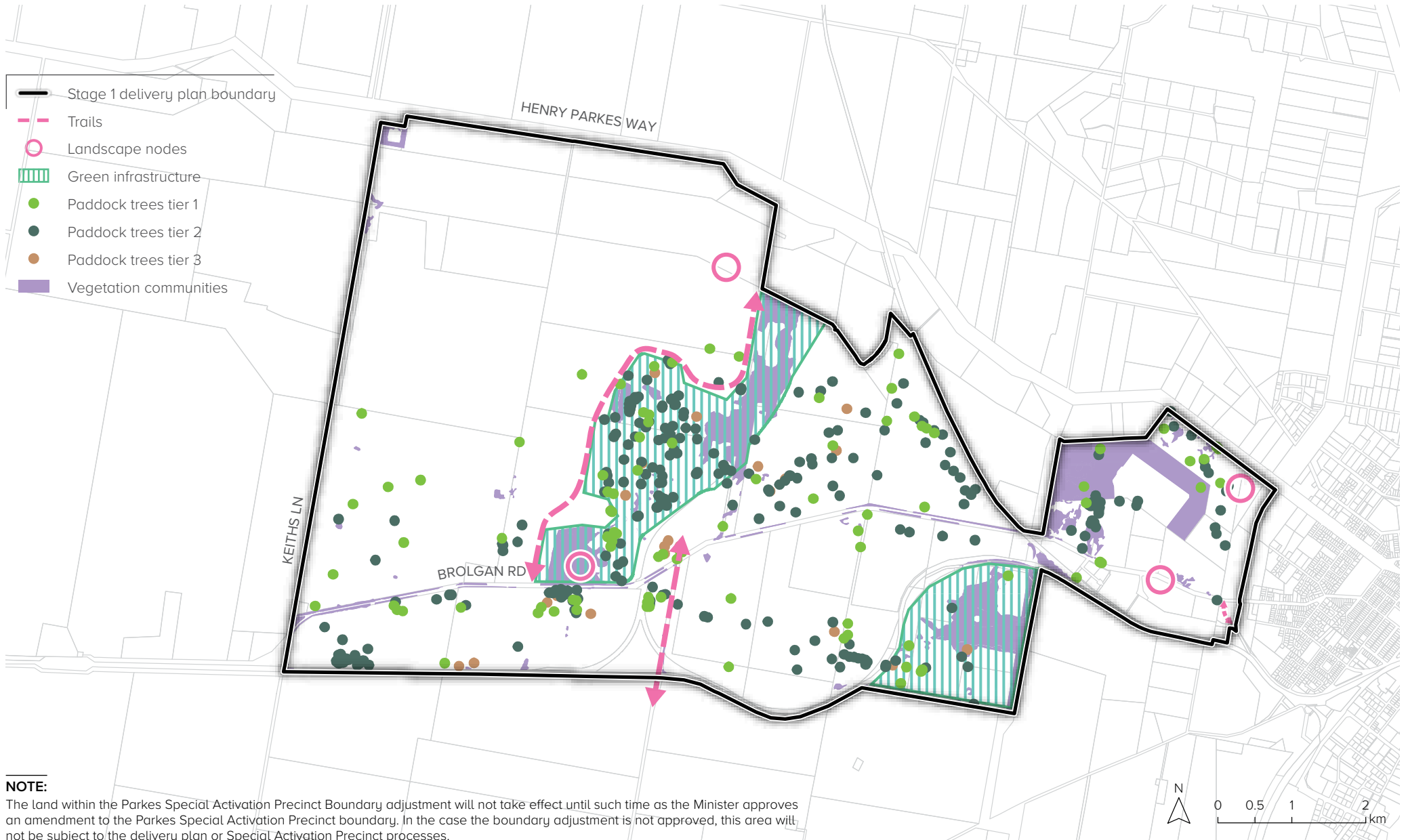
## 6.3 Intermodal and rail terminal facilities overlay



## 6.4 High value vegetation and paddock trees

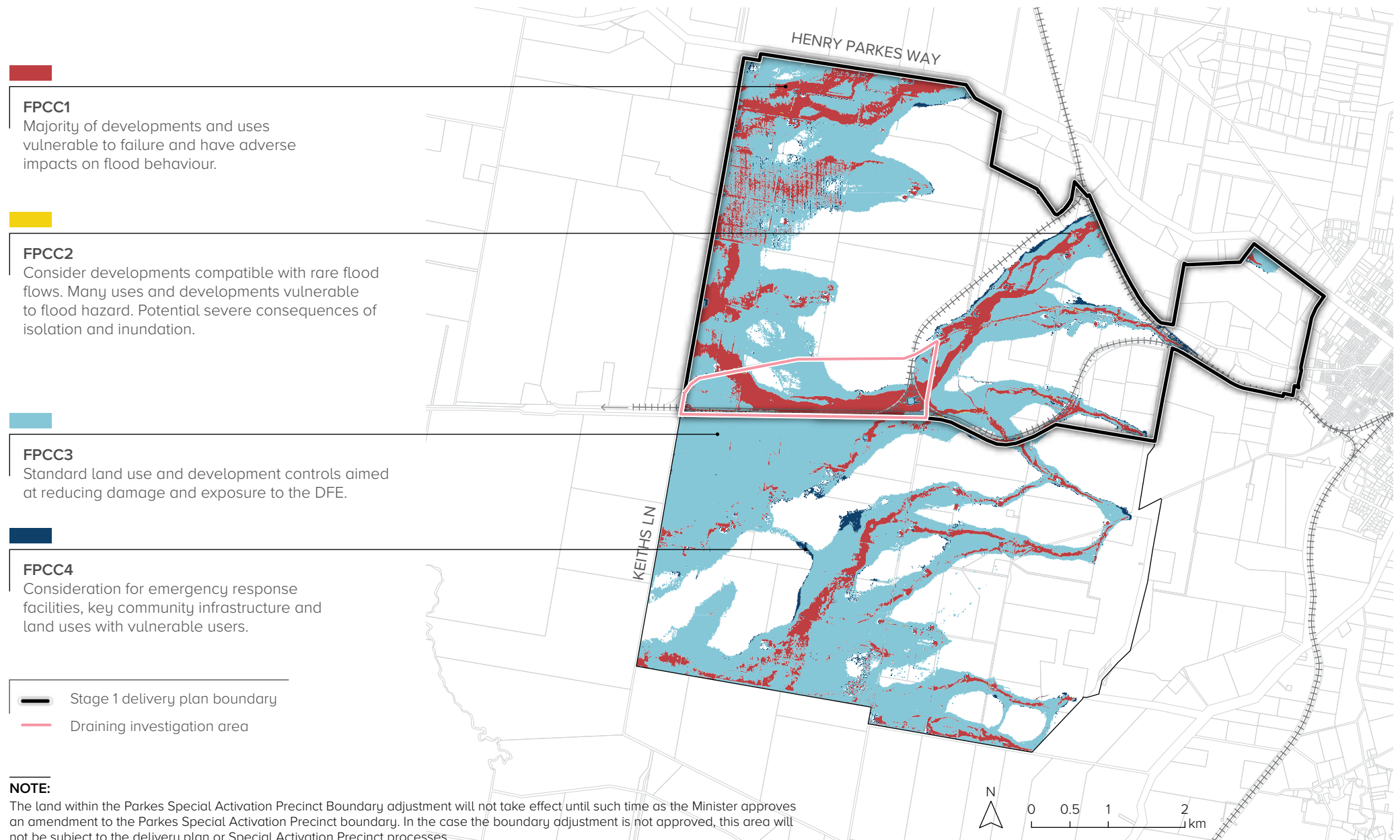


# 6.5 Trails and nodes



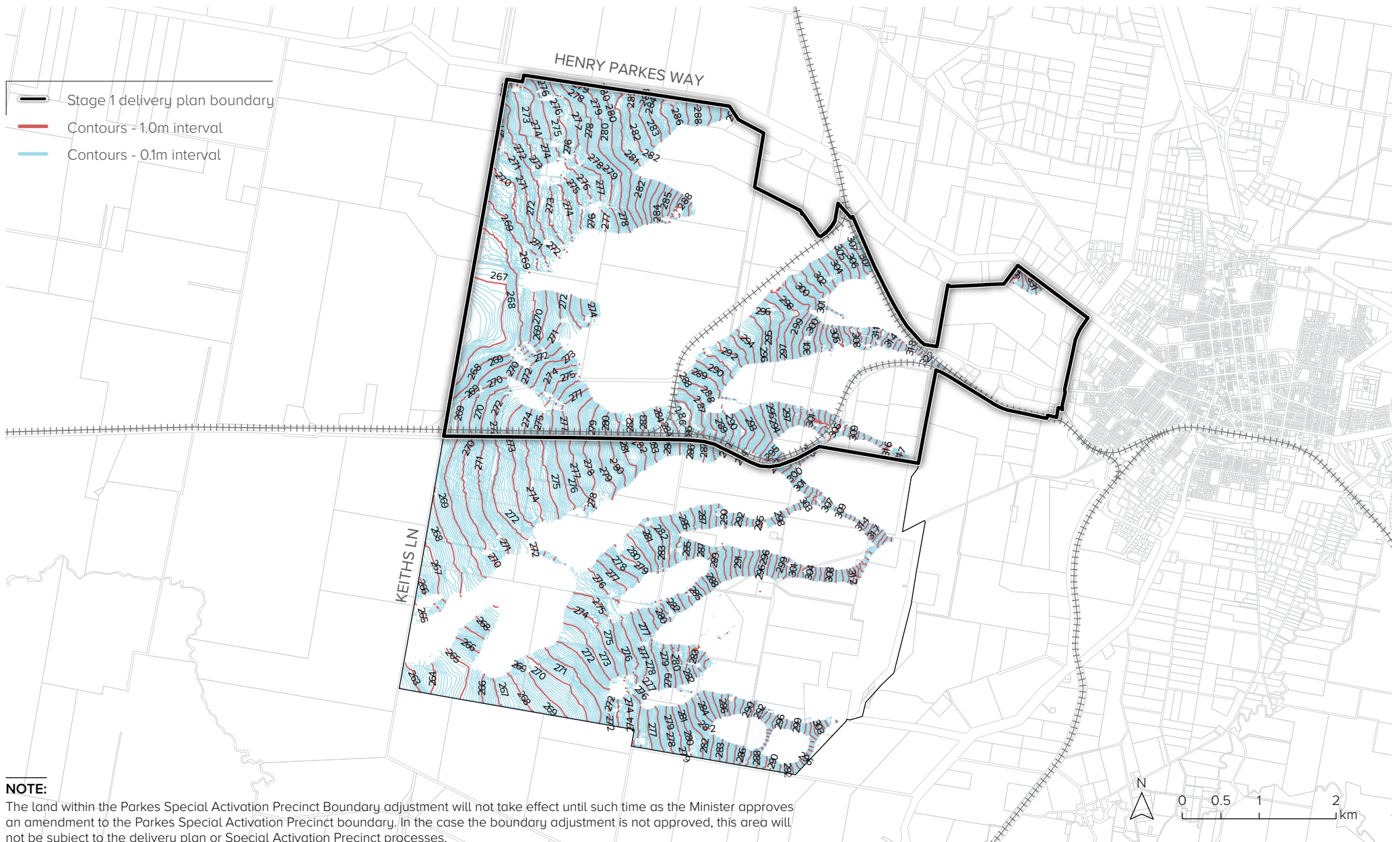
**NOTE:**  
The land within the Parkes Special Activation Precinct Boundary adjustment will not take effect until such time as the Minister approves an amendment to the Parkes Special Activation Precinct boundary. In the case the boundary adjustment is not approved, this area will not be subject to the delivery plan or Special Activation Precinct processes.

## 6.6 Flood planning constraint categories

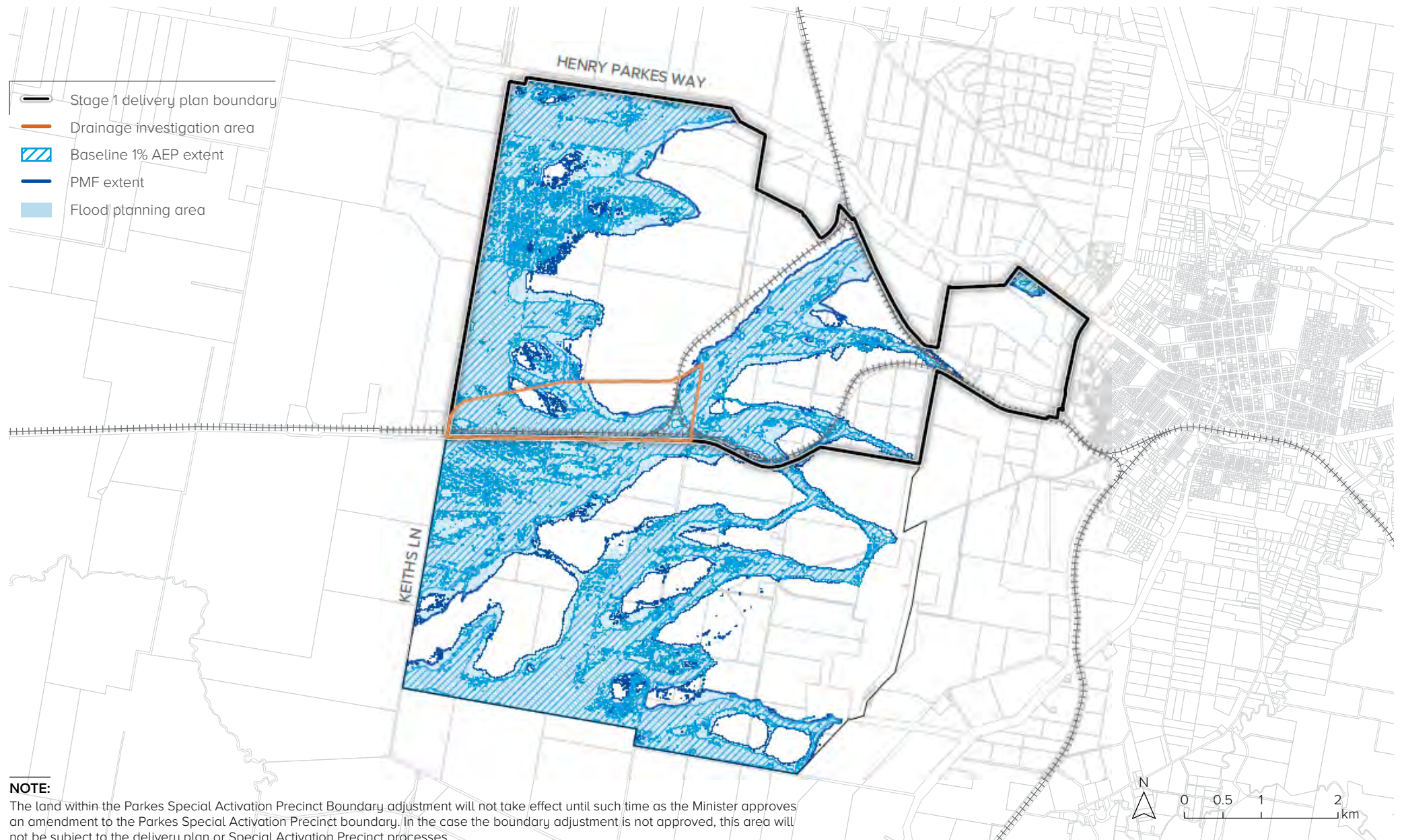




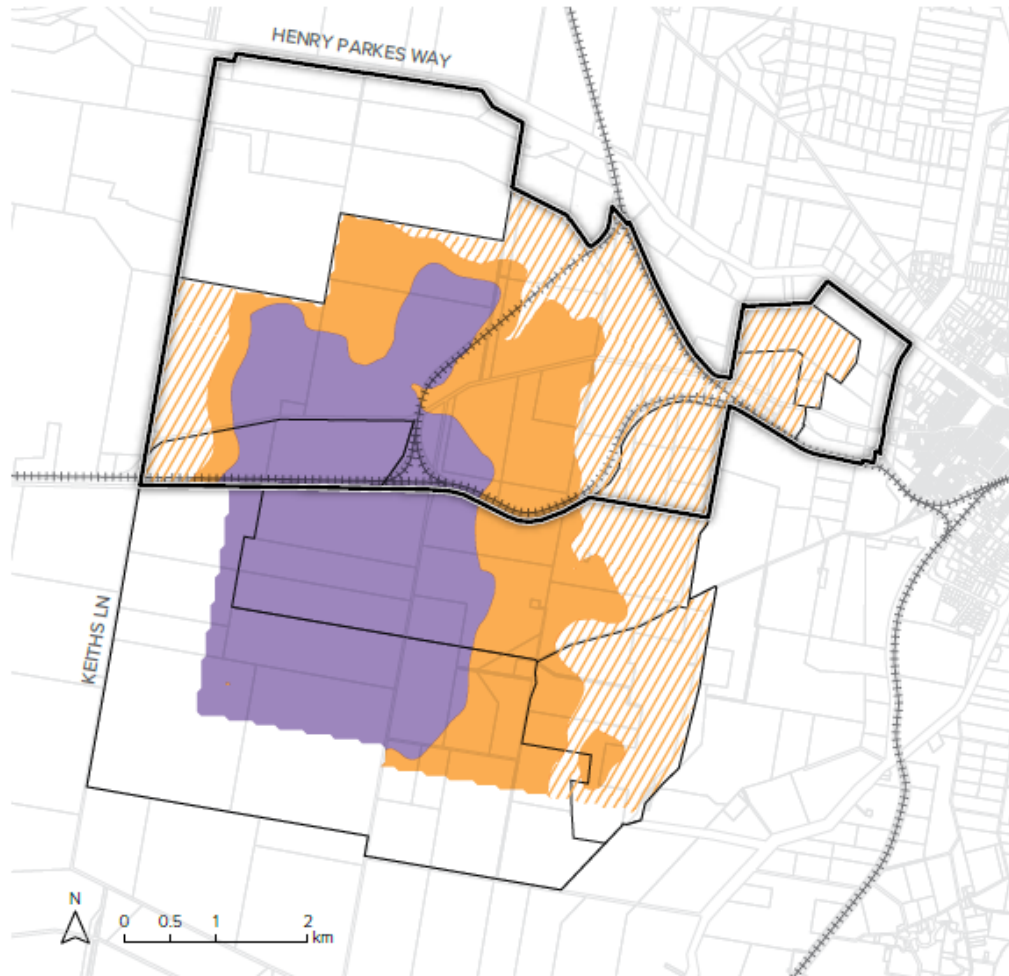
# 6.7 Flood planning levels







## 6.8 Flood planning area (1% AEP event + 300mm freeboard)



## 6.9 Preferred stack locations

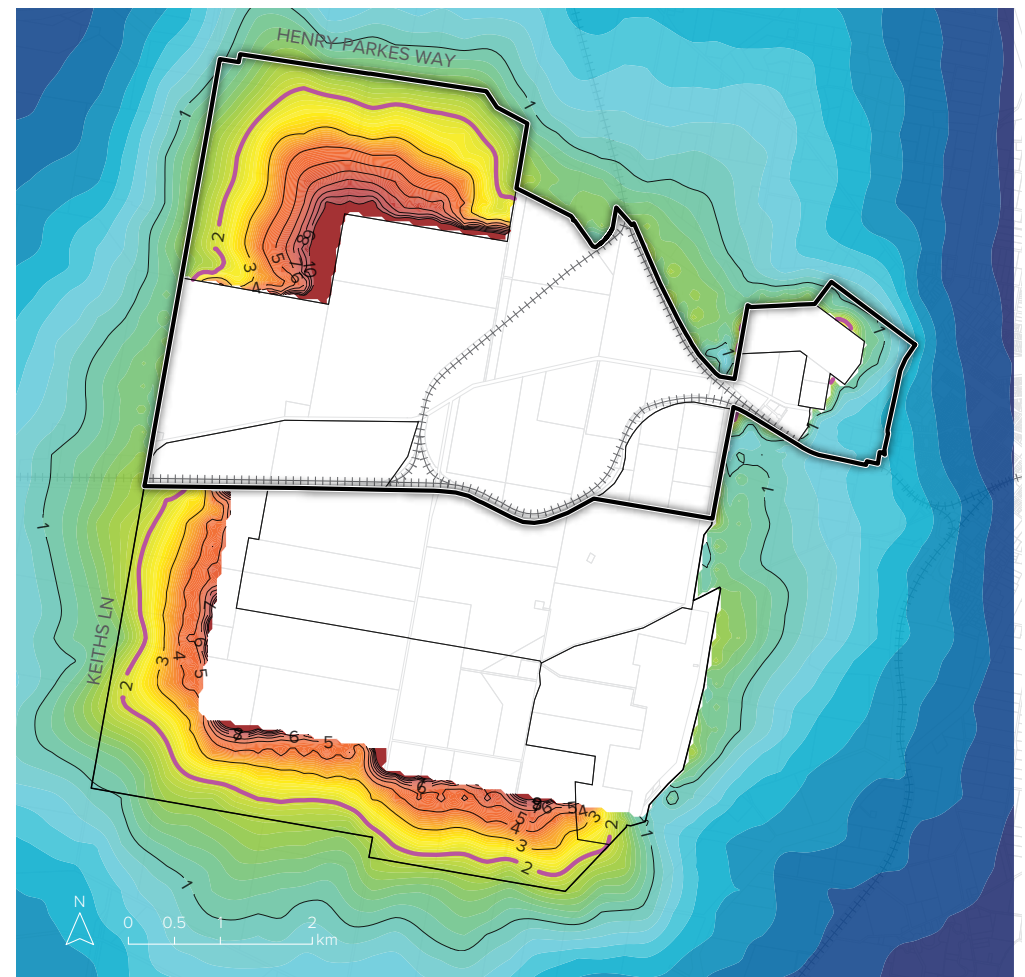
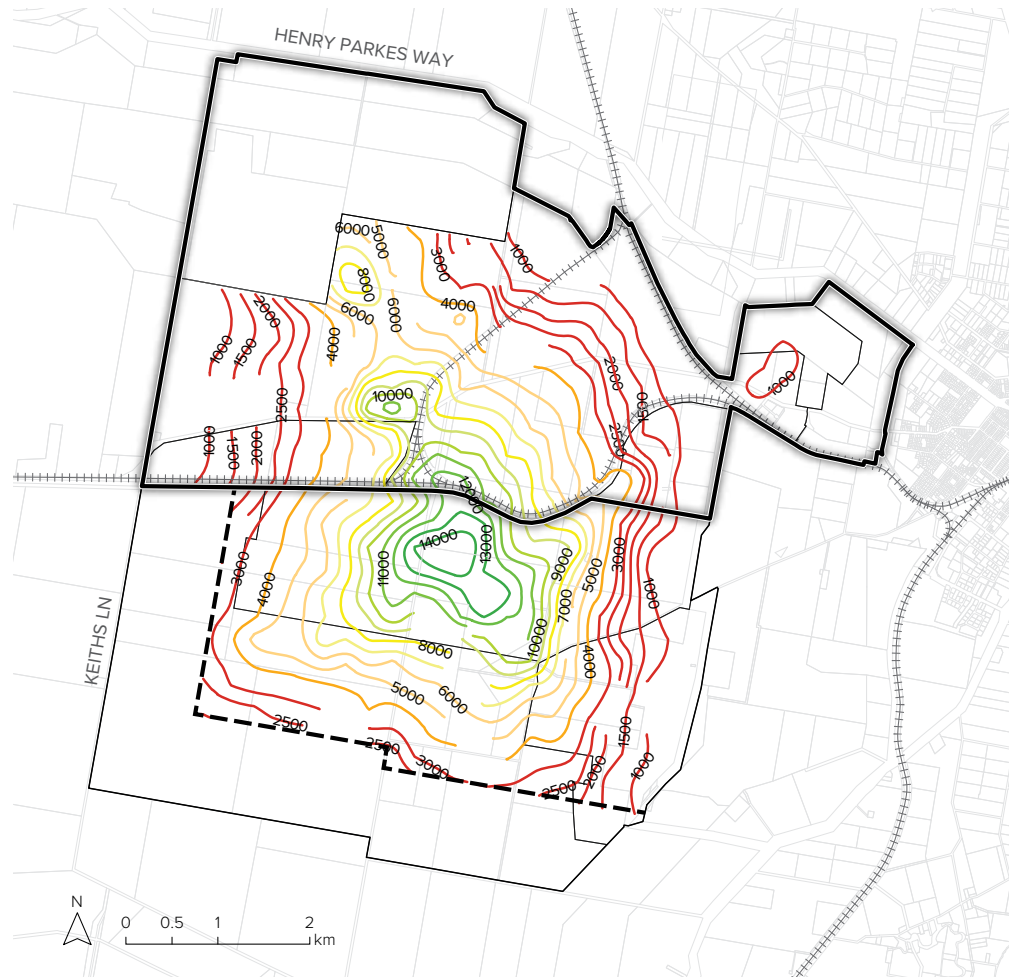


-  Stage 1 delivery plan boundary
-  Preferred stack location
-  Higher performing stacks preferred
-  No stacks preferred

### NOTE:

The land within the Parkes Special Activation Precinct Boundary adjustment will not take effect until such time as the Minister approves an amendment to the Parkes Special Activation Precinct boundary. In the case the boundary adjustment is not approved, this area will not be subject to the delivery plan or Special Activation Precinct processes.

# 6.10 Odour overlay



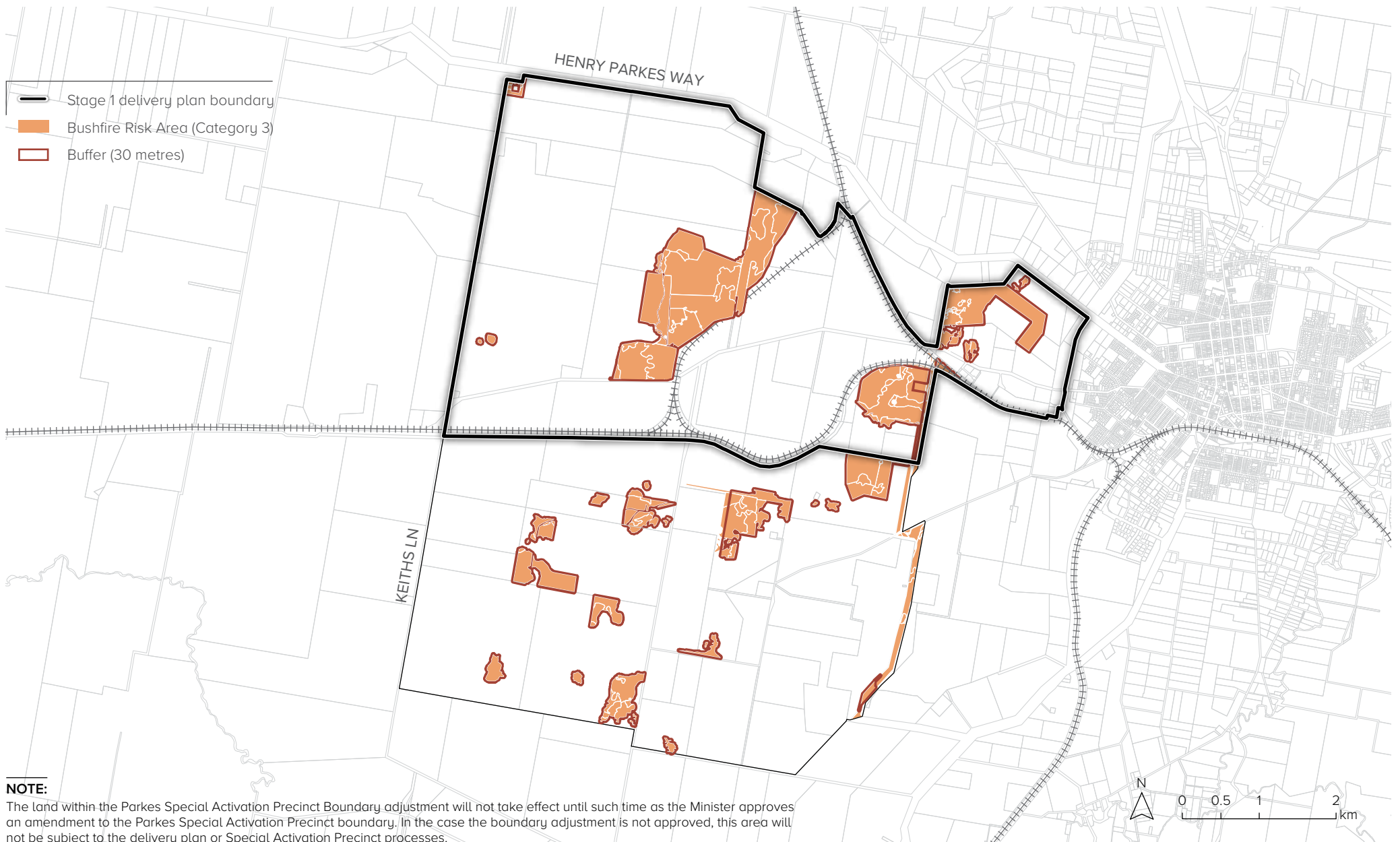
- Stage 1 delivery plan boundary
- Buffer (1km)
- Maximum odour emissions rate (OU/ha)**
- Preferred odour generating industry locations
- Less preferred odour generating industry locations
- Avoid odour generating industry in these locations

- Stage 1 delivery plan boundary
- Extent of impact from individual operations (OU)

**NOTE:**

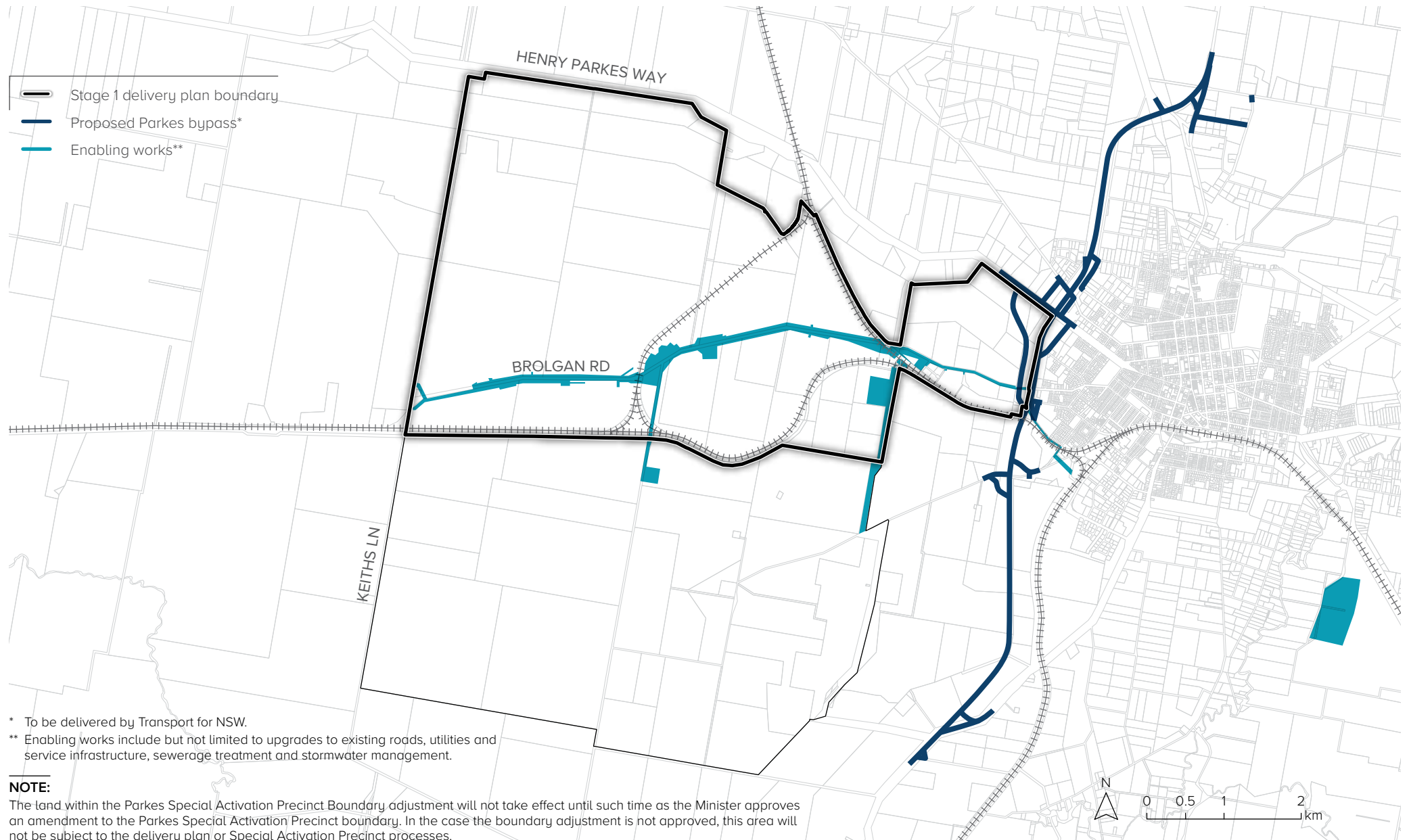
The land within the Parkes Special Activation Precinct Boundary adjustment will not take effect until such time as the Minister approves an amendment to the Parkes Special Activation Precinct boundary. In the case the boundary adjustment is not approved, this area will not be subject to the delivery plan or Special Activation Precinct processes.

# 6.11 Existing and future bushfire risk areas



**NOTE:**  
The land within the Parkes Special Activation Precinct Boundary adjustment will not take effect until such time as the Minister approves an amendment to the Parkes Special Activation Precinct boundary. In the case the boundary adjustment is not approved, this area will not be subject to the delivery plan or Special Activation Precinct processes.

## 6.12 Stage 1 enabling works



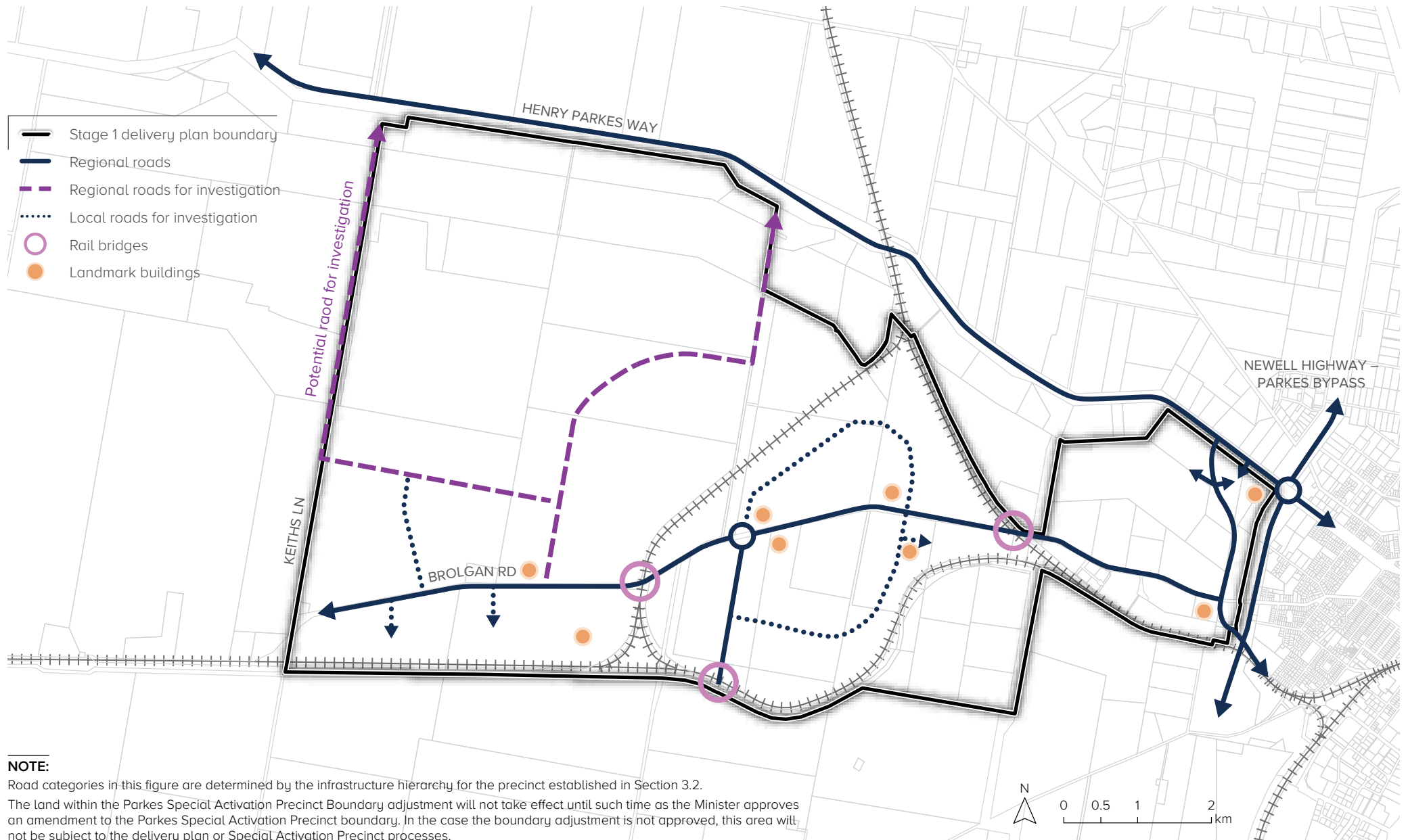
\* To be delivered by Transport for NSW.

\*\* Enabling works include but not limited to upgrades to existing roads, utilities and service infrastructure, sewerage treatment and stormwater management.

**NOTE:**

The land within the Parkes Special Activation Precinct Boundary adjustment will not take effect until such time as the Minister approves an amendment to the Parkes Special Activation Precinct boundary. In the case the boundary adjustment is not approved, this area will not be subject to the delivery plan or Special Activation Precinct processes.

# 6.13 Road network and landmark buildings





Freight trains in Parkes





**Regional Growth NSW**  
Development Corporation



**For more information**

**Regional Growth NSW**  
Development Corporation



1300 REGION (73 44 66)



info@rgdc.nsw.gov.au



rgdc.nsw.gov.au