

COMMUNITY UPDATE

PARKES SPECIAL ACTIVATION PRECINCT NOVEMBER 2021

The Parkes Special Activation Precinct (Parkes precinct) will create jobs and long-term opportunities for the Parkes community and fuel economic growth for the central west.

The precinct is one step closer to becoming the new epicentre of the nation's freight network with construction work now underway. The precinct is being delivered by Regional Growth NSW Development Corporation, an agency of the NSW Government, with its design and construction partners Fulton Hogan.

Key features of the Parkes precinct

The key features of Stage 1 of the Parkes precinct include:

- upgrading 7.3 kilometres of Brolgan Road
- shared user path along Brolgan Road featuring solar lighting
- streetlighting at the three intersections on Brolgan Road
- two bridges over the existing railway lines
- improving accessibility to regional freight corridors
- other associated utility works and upgrades including gas, water, electricity, sewer and communication networks
- landscaping and urban design
- recycled water network
- waste water treatment plant and an associated system of sewer pumping stations and rising mains
- 3 megalitre water reservoir.

MAJOR CONSTRUCTION STARTED AT PARKES

Major construction is now underway. The type of activities you will see on our work sites include:



environmental controls and monitoring



fencing



earthworks



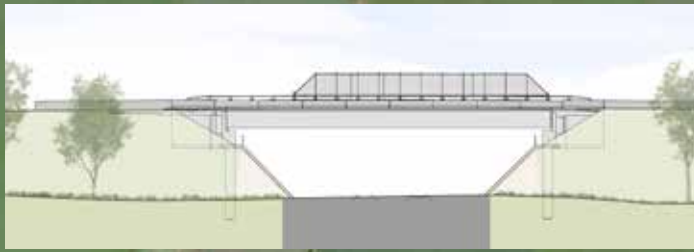
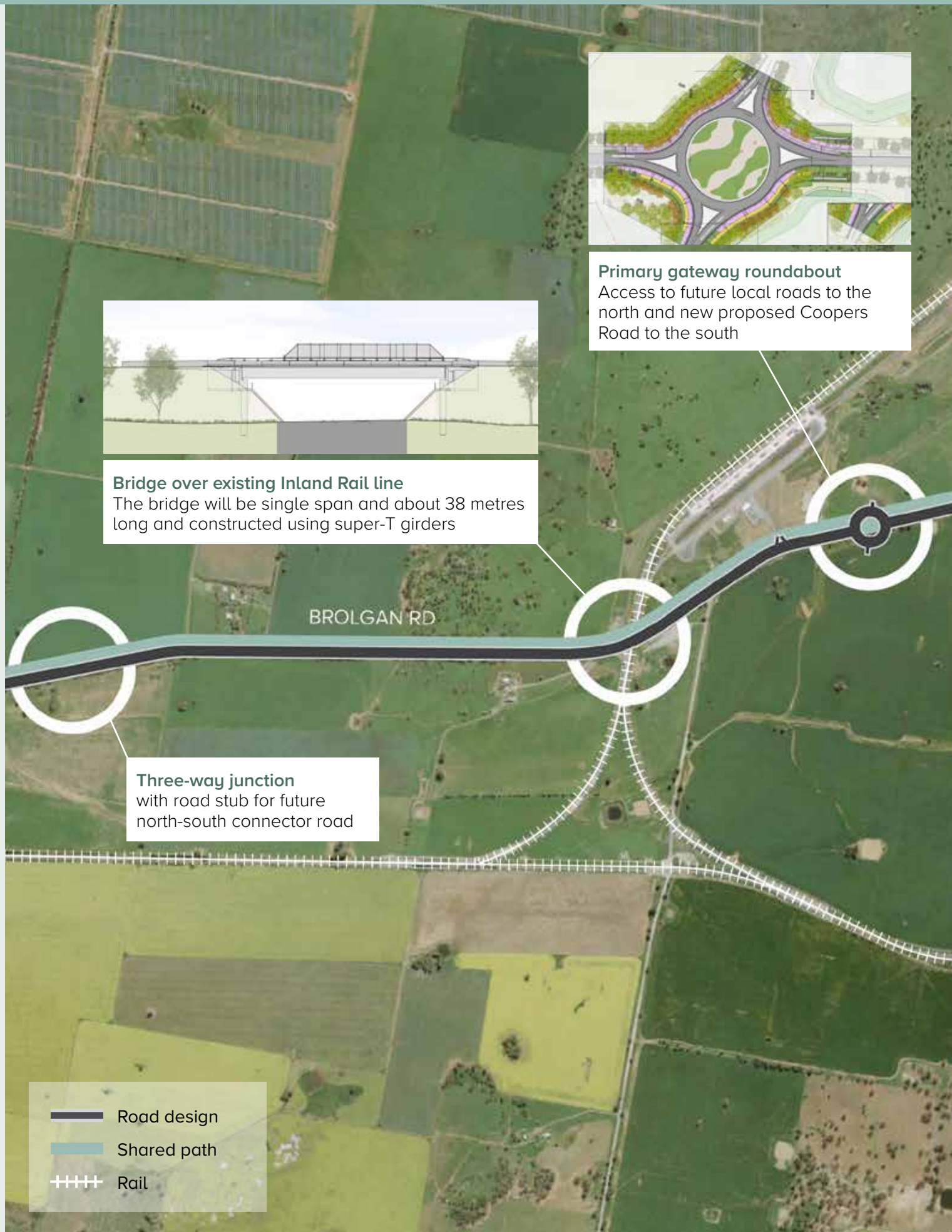
utility relocation

BROLGAN ROAD CLOSURE



To complete the Brolgan Road upgrades, including the construction of the two railway overpass bridges outlined in the master plan, a temporary closure of Brolgan Road is proposed in 2022. The Parkes precinct team will apply to Parkes Shire Council for the proposed closure and is consulting with stakeholders and residents. The precinct team will keep the Parkes community updated with the details ahead of the proposed temporary road closure.

Stage 1 enabling work – map overview



Bridge over existing Inland Rail line
The bridge will be single span and about 38 metres long and constructed using super-T girders

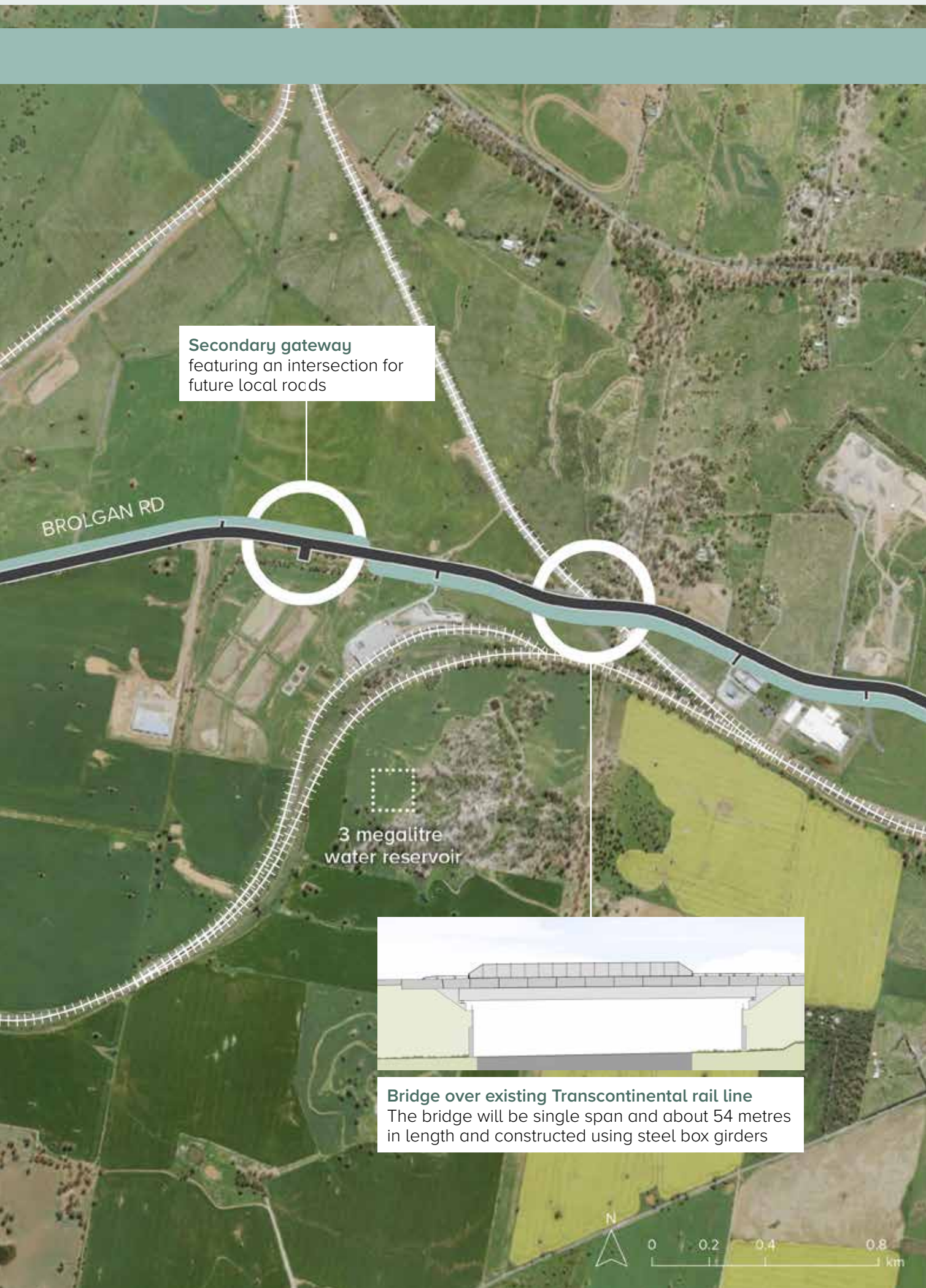


Primary gateway roundabout
Access to future local roads to the north and new proposed Coopers Road to the south

Three-way junction
with road stub for future north-south connector road

BROLGAN RD

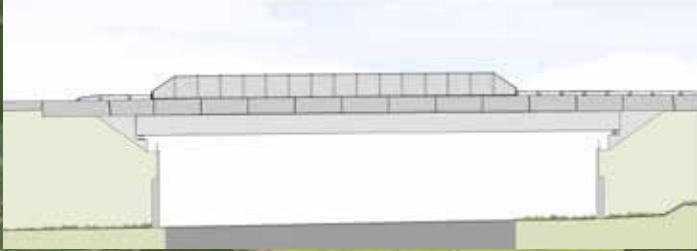
- Road design
- Shared path
- ++++ Rail



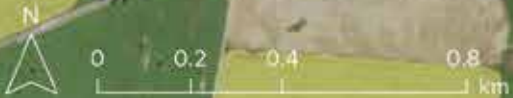
Secondary gateway
featuring an intersection for
future local roads

BROLGAN RD

3 megalitre
water reservoir



Bridge over existing Transcontinental rail line
The bridge will be single span and about 54 metres
in length and constructed using steel box girders






**Project office
 now open**
 Visit us at
 220 Clarinda Street

Urban Design and Landscape Plan

The Urban Design and Landscape Plan (UDLP) has now been finalised by Fulton Hogan and shows how the Stage 1 enabling works, including the various design and landscape elements, will connect with the existing natural landscape.

The UDLP can be viewed at rgdc.nsw.gov.au/news-and-publications

Boundary adjustment

A minor adjustment to the Parkes precinct boundary is now being exhibited online.

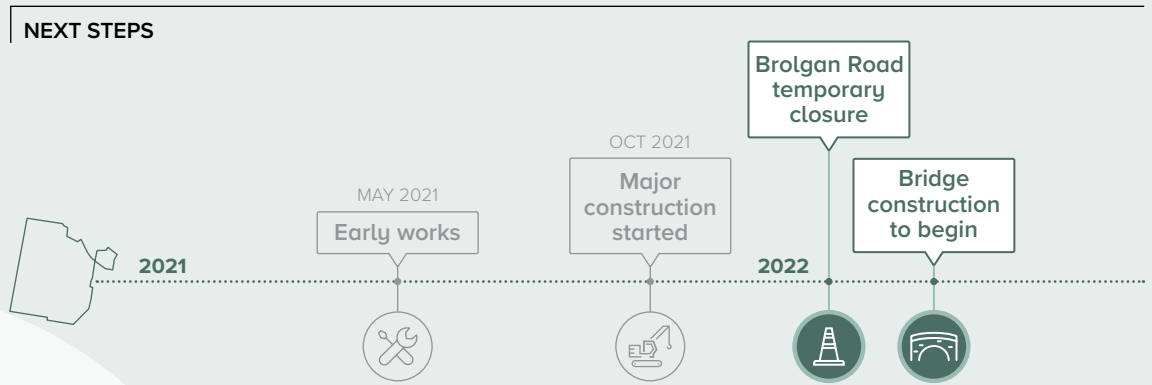
The adjustment to the boundary seeks to rezone approximately 21 hectares of land to allow for future development in line with the precinct's master plan.

Environmental, biodiversity and heritage considerations have been assessed as part of the boundary adjustment, and protection of high value items will be prioritised.

The majority of the land proposed to be included in the precinct's boundary is owned by Government, with other impacted landowners consulted.




You can review the discussion paper associated with this matter by visiting www.planning.nsw.gov.au/parkessap Submissions with feedback are welcomed, and the submission period will close at 11:59pm, 30 November 2021.

Submissions will then be reviewed and assessed, and necessary updates made to the Parkes precinct's master plan.



Contact us

Fulton Hogan

-  1800 329 135
-  ParkesSAP@fultonhogan.com.au
-  Main project site office:
220 Clarinda Street, Parkes

Regional Growth NSW Development Corporation

-  1300 REGION (734466)
-  info@rgdc.nsw.gov.au
-  rgdc.nsw.gov.au