

COMMUNITY UPDATE

WAGGA WAGGA SPECIAL ACTIVATION PRECINCT MAY 2021

The Wagga Wagga Special Activation Precinct will be a sustainable hub of high value production and manufacturing.

As NSW's southern gateway and located on the new Inland Rail, the precinct will connect Australia's richest food and agricultural region with the world.

Wagga Wagga Special Activation Precinct Master Plan and Activation Precincts State Environmental Planning Policy (SEPP) approved

In July 2020, the Department exhibited the draft master plan for the Wagga Wagga Special Activation Precinct along with an amendment to the Activation Precincts State Environmental Planning Policy (SEPP).

We have now considered feedback received and finalised these key documents.

We'd like to take this opportunity to thank the community for their interest and involvement in the master planning process.

Please visit our website at planning.nsw.gov.au/WaggaWaggaSAP to view the finalised master plan, amended SEPP, the submissions report, and Frequently Asked Questions.

The Department of Planning, Industry and Environment will write to landowners advising them of the finalisation of the master plan, SEPP and associated documents.

Funding announced to build Wagga Wagga Special Activation Precinct

The Wagga Wagga Special Activation Precinct master plan is complete and the government has committed a further \$137 million to start designing and building the precinct.

The investment will kick-start infrastructure – including roads, sewer, water and electricity services – which allow businesses to come in and set up sooner.

This is in addition to the \$20.6 million announced in November last year and represents a total commitment to Wagga of almost \$158 million to date.

WAGGA WAGGA PRECINCT

4,500 ha



FUNDING TO DATE

\$158 million



The precinct capitalises on Wagga Wagga's location as NSW's southern gateway and central to the Riverina, offering land costs which are just a fraction of those in major metropolitan areas.

The precinct covers 4,500 hectares of land which is earmarked for a range of uses including freight and logistics, agribusiness, advanced manufacturing, innovation, skills and education, and renewable energy and recycling.

The precinct will focus on sustainability and will be one of Australia's first UNIDO Eco Industrial parks.

Special Activation Precincts are part of the \$4.2 billion Snowy Hydro Legacy Fund, dedicated to major and transformative infrastructure projects that will benefit regional NSW.

To follow the progress of the Wagga Wagga Special Activation Precinct go to rgdc.nsw.gov.au



Next steps for Wagga Wagga precinct

Regional Growth NSW Development Corporation has begun work on the delivery plan and procurement of construction services for the stage 1 infrastructure work.



Delivery plan

The delivery plan builds upon the principles and streamlined planning process outlined in the master plan. It provides clear requirements for developers looking to grow or establish their business in the precinct.

The delivery plan will go on exhibition on the NSW's Government's Planning Portal once released.



Construction

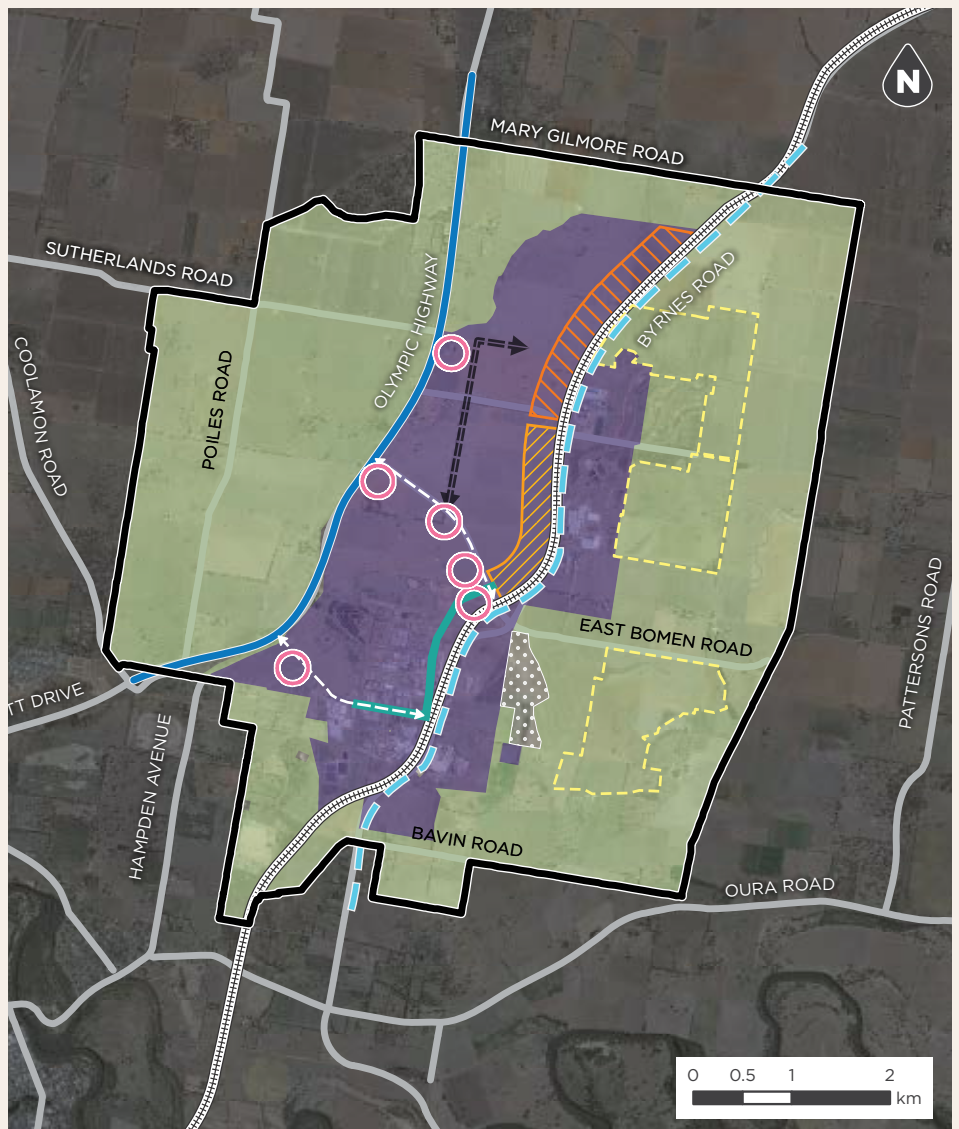
The corporation will soon begin the procurement process for the design and construction of the stage 1 infrastructure within the precinct. This will include roads, sewer, water, electricity and communication services to allow businesses to set up faster within the precinct.

The project is expected to go to tender in August 2021 with work expected to begin mid-2022.

For more information, contact the team on info@rgdc.nsw.gov.au


WAGGA WAGGA SPECIAL ACTIVATION PRECINCT MASTER PLAN AT A GLANCE

-  Special Activation Precinct (4,424 ha)
-  Industrial core
-  Rural landscape buffer
-  Riverina Intermodal Freight and Logistics Hub (RIFL)
-  Possible future expansion of rail siding infrastructure
-  Land to be reserved for heritage, culture and habitat
-  Future local road upgrade
-  Future upgrade of existing east – west boulevards
-  Major road future upgrade proposed
-  Major road
-  Future infrastructure corridors
-  Approved solar farms (indicative)
-  Potential commercial nodes
-  Railway
-  Road



Contact

Regional Growth NSW
Development Corporation

 1300 REGION

 info@rgdc.nsw.gov.au