

Learning English Consonants (Across the World)



Average age of acquisition of English consonants across the world (90–100% criteria)

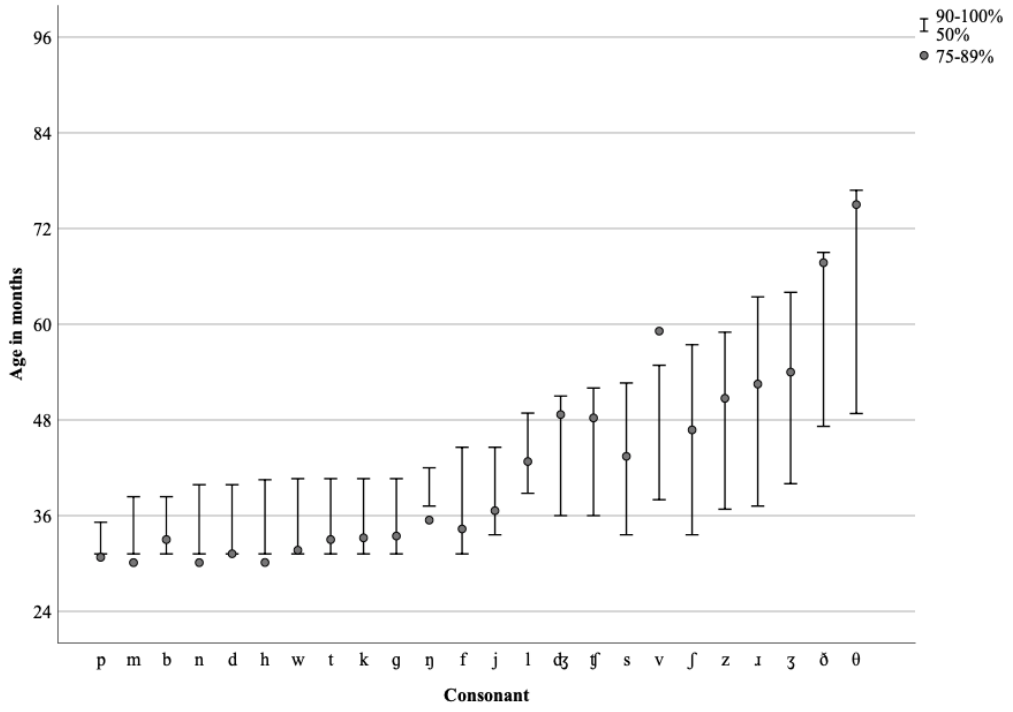
The review was based on 15 studies of 7,369 children speaking English in Australia, Republic of Ireland, Malaysia, South Africa, United Kingdom, and United States (McLeod & Crowe, 2018).

This information should be used alongside other information about children's speech acquisition; for example, typically developing 4- to 5-year-old children are usually intelligible, even to strangers (McLeod, Crowe, & Shahaieian, 2015).

McLeod, S., & Crowe, K. (2018). Children's consonant acquisition in 27 languages: A cross-linguistic review. *American Journal of Speech-Language Pathology*, 27, 1546–1571. doi:10.1044/2018_AJSLP-17-0100

McLeod, S., Crowe, K., & Shahaieian, A. (2015). Intelligibility in Context Scale: Normative and validation data for English-speaking preschoolers. *Language, Speech, and Hearing Services in Schools*, 46(3), 266–276. doi:10.1044/2015_LSHSS-14-0120

Learning English Consonants (Across the World)



Average age of acquisition of English consonants across the world (50%, 75-85%, 90-100% criteria)

The review was based on 15 studies of 7,369 children speaking English in Australia, Republic of Ireland, Malaysia, South Africa, United Kingdom, and United States (McLeod & Crowe, 2018).

This information should be used alongside other information about children's speech acquisition; for example, typically developing 4- to 5-year-old children are usually intelligible, even to strangers (McLeod, Crowe, & Shahaieian, 2015).

McLeod, S., & Crowe, K. (2018). Children's consonant acquisition in 27 languages: A cross-linguistic review. *American Journal of Speech-Language Pathology*, 27, 1546-1571. doi:10.1044/2018_AJSLP-17-0100

McLeod, S., Crowe, K., & Shahaieian, A. (2015). Intelligibility in Context Scale: Normative and validation data for English-speaking preschoolers. *Language, Speech, and Hearing Services in Schools*, 46(3), 266-276. doi:10.1044/2015_LSHSS-14-0120