

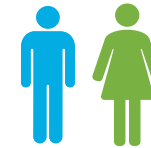
2021 Health Literacy Study

Aboriginal People's Prison Participants Key Findings

No. of participants: 97

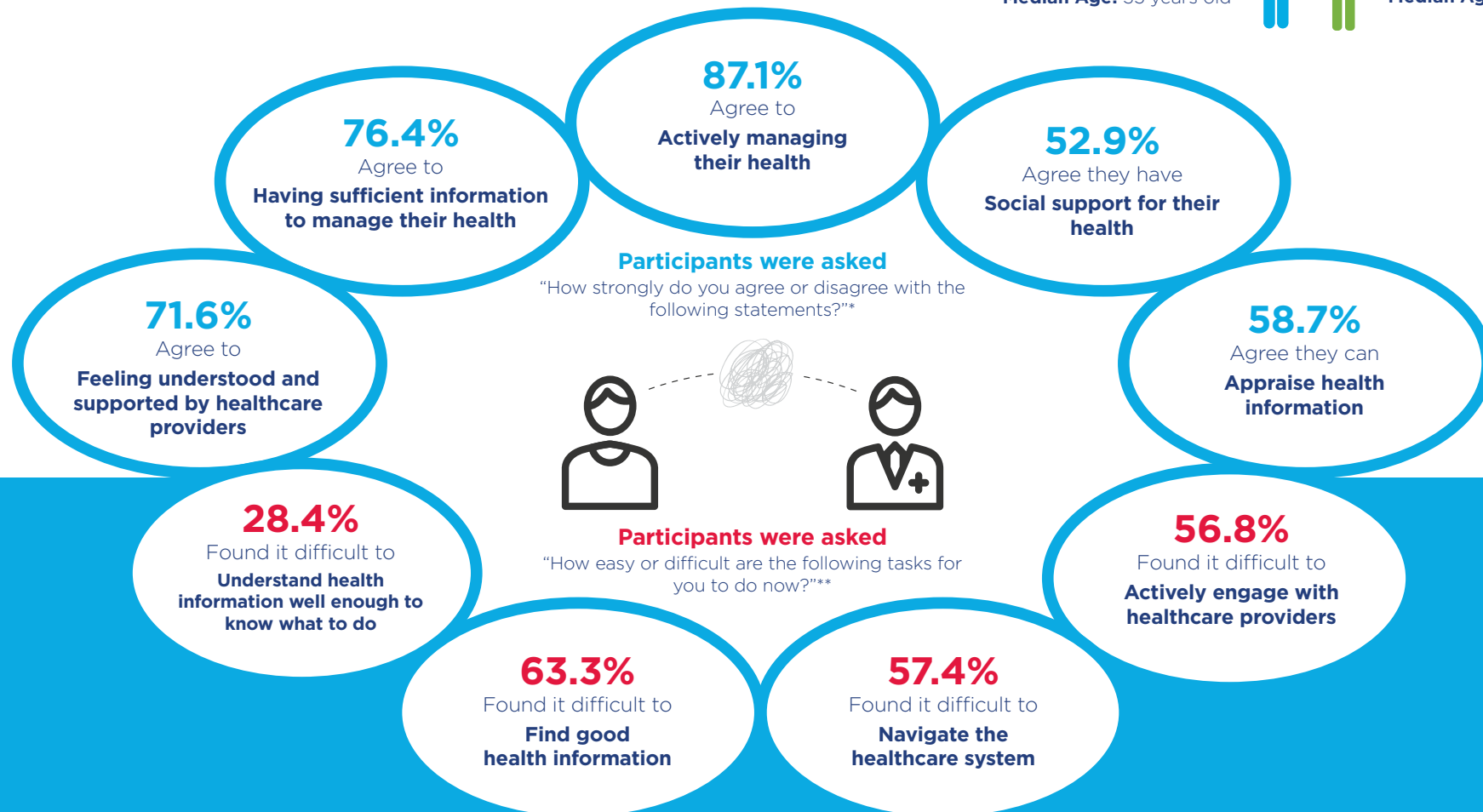
73.2%

Median Age: 35 years old



26.8%

Median Age: 31.5 years old



Note: Data collection occurred between October 2020 to April 2021.

*Percentages represent the Agree (Agree and Strongly Agree) responses combined.

**Percentages represent the Difficult (Always, Usually and Sometimes Difficult) responses combined.

Percentages are weighted for Aboriginal People population in custody as of 31 December 2020.

Full details of weighting calculations will be described in the report.

Reference:

Osborne RH, Batterham RW, Elsworth GR, Hawkins M, Buchbinder R (2013) The grounded psychometric development and initial validation of the Health Literacy Questionnaire (HLQ). BMC Public Health 13:658. doi:10.1186/1471-2458-13-658 at <https://www.swinburne.edu.au/research/global-health-equity/>



Health

Justice Health and
Forensic Mental Health Network