

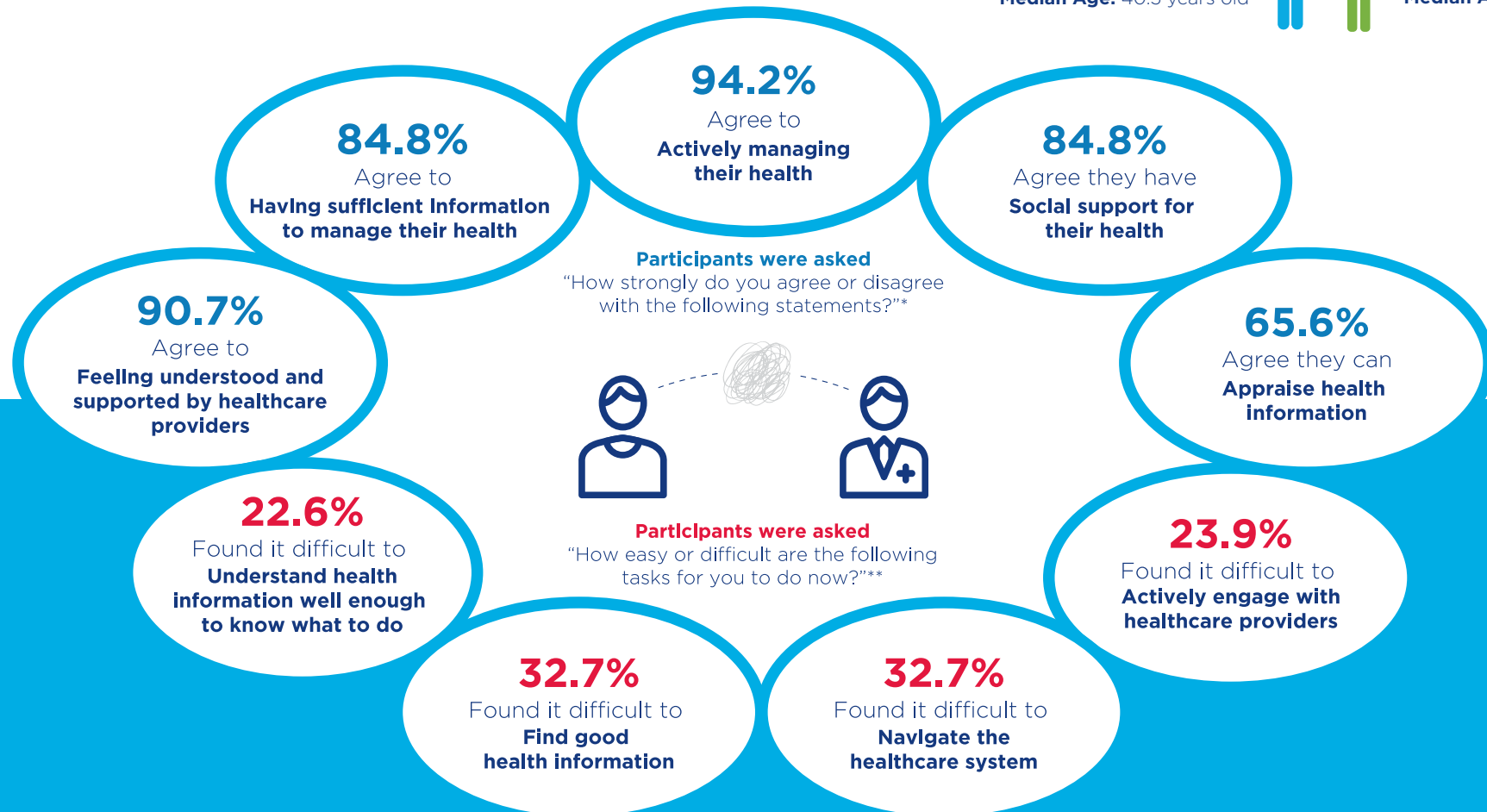


# 2021 Health Literacy Study

## Forensic Participants Key Findings

No. of participants: 35

85.7%  14.3%   
Median Age: 40.5 years old      Median Age: 44 years old



**Note:** Data collection occurred between May 2021 to August 2021.

\*Percentages represent the Agree (Agree and Strongly Agree) responses combined.

\*\*Percentages represent the Difficult (Always, Usually and Sometimes Difficult) responses combined.

Percentages are weighted for total population in Forensic Hospital as of 15 May 2021. Full details of weighting calculations will be described in the report.

**Reference:**

Osborne RH, Batterham RW, Elsworth GR, Hawkins M, Buchbinder R (2013) The grounded psychometric development and initial validation of the Health Literacy Questionnaire (HLQ). BMC Public Health 13:658. doi:10.1186/1471-2458-13-658 at <https://www.swinburne.edu.au/research/global-health-equity/>



Health

Justice Health and  
Forensic Mental Health Network