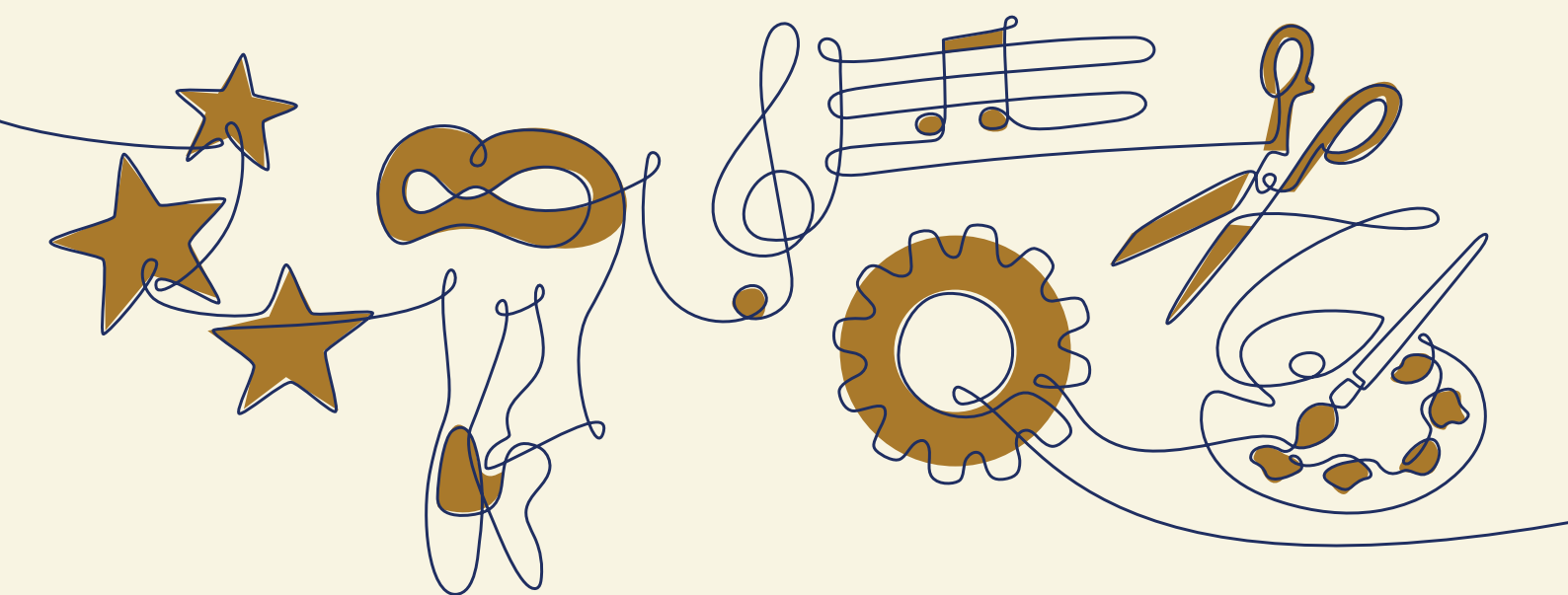


# 2023 HSC Showcase Season Launch



Thursday 2 February 2023  
Seymour Centre  
10am – 12 noon

## Order of proceedings

Welcome from MC, Carlos Sanson Jr.

Welcome to Country presented by Aunty Joan Bell

Introduction by The Hon. Sarah Mitchell, MLC, Minister for Education and Early Learning

### 2023 HSC SHOWCASE CELEBRATION

OnStage presentation with performance by Sophia Tsoltoudis

Shape presentation

Callback presentation with performance by Ally Roberts

ARTEXPRESS presentation

Encore presentation with performance by Patrick Ward

Closing remarks by Chief Executive Officer, NSW Education Standards Authority, Mr Paul Martin





## Carlos Sanson Jr. (guest MC)

Born and raised in Sydney, Carlos completed his HSC in 2016 at Reddam House where he was a passionate drama student.

For Carlos the HSC was a pivotal and important time in his life and he recalls his preparation for his drama monologue fondly. He like many students had high hopes of being selected for an HSC Showcase, as an added bonus.

Although not selected for OnStage in 2016 Carlos was inspired by the support and acknowledgment of his peers. The process of preparing his drama monologue and the journey to final performance gave him the confidence to pursue acting as his chosen profession.

It wasn't long before Carlos graduated from Screenwise, Australia's leading Film and TV School for Actors and began his rise to fame. Carlos has since starred in many short film and television series, most well-known for his role as 'Santi' in Australian television series 'Bump', now streaming for a third season.

# Acknowledgments

The NSW Education Standards Authority would like to thank the teachers and schools for all the work that goes into preparing students who are selected for an HSC showcase. Thank you to all the families and communities that support these students as well.

## PRODUCTION PARTNERS

### **The Arts Unit, Department of Education**

Kate Dowland and Emma Jefferson, Production team, ARTEXPRESS  
Joanne King, Producer, Callback  
Peter Copeland, Producer, Encore  
Jane Simmons, Producer, OnStage

### **The Powerhouse Museum production team for SHAPE**

**Technology Educators Association for hosting TexStyle**

**Institute of Technology Education for hosting InTech**

## VENUE PARTNERS

Art Gallery of New South Wales (AGNSW)  
Blue Mountains Cultural Centre  
Bondi Pavilion Gallery  
Glasshouse Regional Gallery  
Hawkesbury Regional Art Gallery  
Hazelhurst Arts Centre  
Mudgee Art Precinct (MAP)  
The Armory, Sydney Olympic Park (SOPA)  
Western Plains Cultural Centre  
Sydney Opera House  
The Seymour Centre  
The Powerhouse Museum

# 2023 HSC Showcase Season

The HSC showcases celebrate student achievement by reflecting on the creativity and innovation of HSC students. This season celebrates the talent and creativity of over 450 HSC students.



## ARTEXPRESS

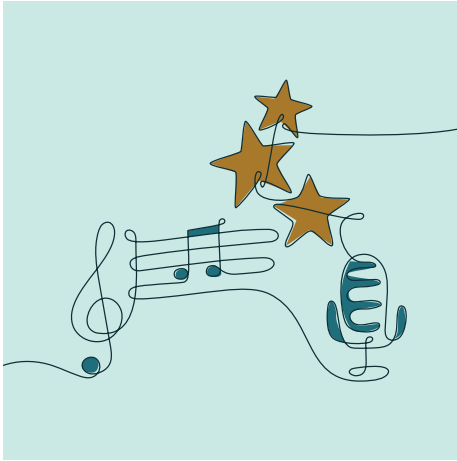
A showcase of exemplary artworks created by students for the HSC in Visual Arts.

ARTEXPRESS represents the high standards and diversity achieved by HSC Visual Arts students in NSW schools and is a joint partnership between NESA and the NSW Department of Education.



## Callback

A showcase of exemplary performances and compositions by HSC students of Dance presented by the NSW Department of Education in association with NESA.



## Encore

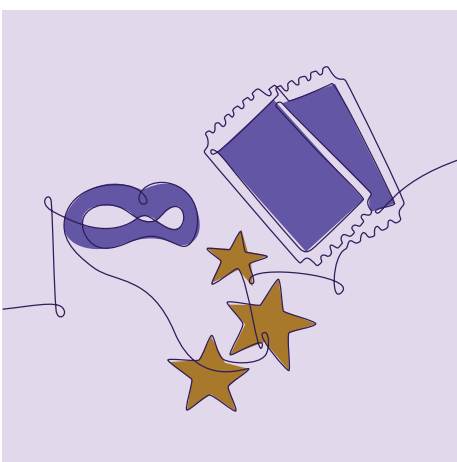
A showcase of outstanding performances and compositions by HSC Music students and is a joint partnership between NESA and the NSW Department of Education.



## InTech

An exhibition of outstanding Major Projects from HSC Industrial Technology students.

Hosted by the Institute of Technology Education.



## OnStage

A showcase featuring a selection of exemplary group and individual works from HSC Drama students including performances, video dramas, and a moved reading of a script.

The exhibition of projects includes costume and set design, promotion and program, and theatre review.



## Shape

An exhibition featuring a selection of students' exemplary HSC major projects from Design and Technology, Industrial Technology and Textiles and Design.

Shape is exhibited in a joint partnership between NESA and The Powerhouse Museum.



## TexStyle

An exhibition of exemplary Textiles and Design projects from HSC Textiles students.

Hosted by the Technology Educators Association.

