






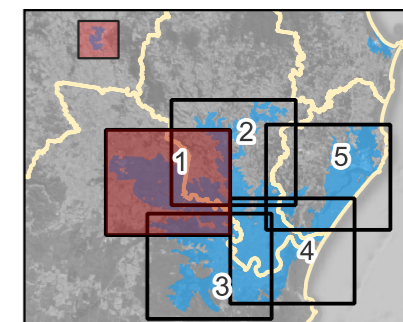


## Priority Level Areas- Richmond River

Map 1 of 5

### Legend

-  Watercourses
-  Cadastre
-  Existing Flood Study Boundaries
- Priority Level Areas**
-  Priority Level 1
-  Priority Level 2
-  Priority Level 3
-  Priority Level 4

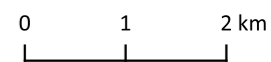


The maps utilise information from the latest flood risk studies, including flood hazard information (a function of depth and velocity of flood water) for floods up to the 1 in 500 AEP. It is important to note that there can be larger events, and therefore there is a residual risk beyond that which is shown in these maps.

Existing Flood Studies: Lismore Floodplain Risk Management Study (Engeny, 2021), Richmond River Flood Mapping Study (BMT WBM, 2010), Ballina Floodplain Risk Management Study (BMT WBM, 2012) and Kyogle Flood Study (WBM, 2004)

Aerial Imagery: NSW Spatial Services

You should make your own inquiries and seek independent advice in relation to the maps and the information contained therein. The NRRC and the NSW Government is in no way liable for any loss, damage, cost or expense incurred or suffered by you relating to or resulting from the use of, or reliance on, the information contained in the maps.



Scale: 1:75000@A3

Date: 19/06/2023

Coordinate System: GDA2020 / MGA zone 56



Northern Rivers  
Reconstruction  
Corporation