



Caring for the Finley community now and into the future

In December 2021 the NSW Government committed \$25 million to enhance the current Finley Health Service to provide high quality and consumer friendly health care service to support the needs of Finley and surrounding communities now and into the future.



The Local Health District, in consultation with stakeholders and community has completed the Clinical Services Plan which will inform the scope of the redevelopment. Master Planning will commence in late 2022.



The redevelopment will provide a significant improvement on the current Finley Health Service facility.



Murrumbidgee Local Health District will work closely with Health Infrastructure, and the community to plan the redevelopment.

How to build a hospital

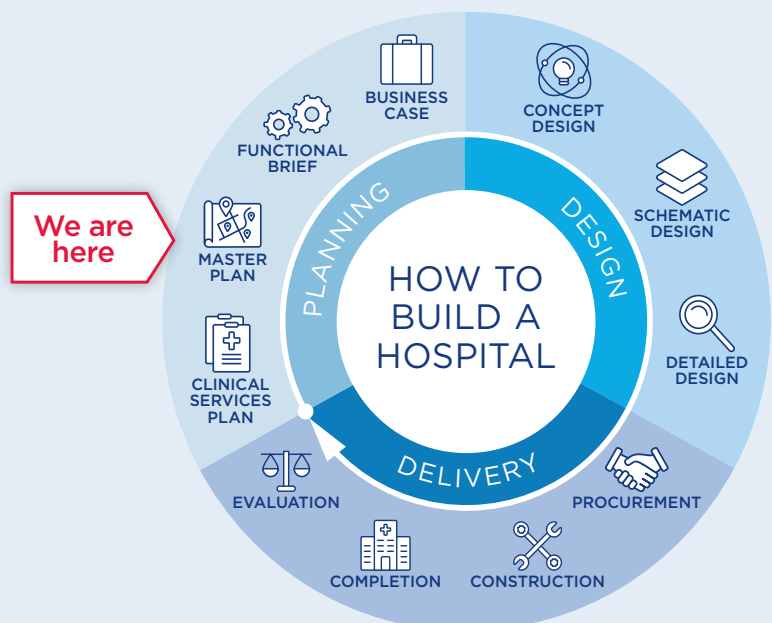
There are three distinct phases:

- planning
- design
- delivery

Each development is tailored to a community's unique needs. The Finley Health Service is in the planning phase.

Visit the Health Infrastructure website for more information:

www.hinfra.health.nsw.gov.au/our-business/how-to-build-a-hospital



FAQS

What stage is the project up to?

There are a number of stages and processes that need to be taken in a hospital redevelopment project to ensure the appropriate health services are delivered to the local community. Importantly, we need to continue to provide all existing hospital services throughout the redevelopment.

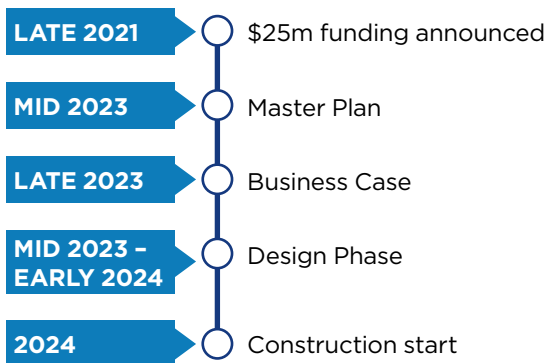
The Finley Health Service Redevelopment, Clinical Services Plan has been completed and is undergoing review and approvals. The Master Plan for the site is also being developed and will be available for stakeholders to view and provide feedback in the coming months.

Who is involved in the Redevelopment?

Health Infrastructure (HI) is working with the Murrumbidgee Local Health District to plan for the upgrade. The lead consultant team for the Finley Health Service Redevelopment has been appointed. Contracts have been awarded to Capital Insight (Project Manager) and HDR (Architect).

A dedicated Redevelopment Project Team has been formed.

What is the anticipated project timeline?



How much consultation will take place during the planning and design phase?

During the design process, the project team will consult with Project User Groups (PUGs) on various aspects of the building's design. Participation from user groups is important in developing the design to ensure the design meets the needs of clinicians and other staff including nurses and hospital managers, as well as patients and the community.

How can you be involved?

Health professionals, consumers, and communities across the Finley region all have an important role in shaping key aspects of the new Finley Health Service. Staff and community information sessions have been held and more are coming up to provide opportunities to meet the consultants and outline where you can be involved and provide input.

When will work start on the Finley Health Services redevelopment project?

Commencing a redevelopment requires in depth planning to determine the most appropriate outcome which best meets the needs of the community.

The program will be determined as planning progresses. More details will be provided via regular community updates to ensure the community is informed on progress.

What services and facilities will be included in the Finley Health Service?

The redevelopment will provide a range of updated health services specific to the needs of community. The full range of services delivered as part of the redevelopment will be identified through the planning phase, however all the existing services will continue to be provided into the future.

Will construction impact on health services?

Services will continue at Finley Health Service during construction. Every effort will be made to minimise disruption. Staff and the community will be informed of any planned changes.

How is MLHD addressing staffing challenges?

MLHD recognises that dedicated staff play a vital role in delivery of exceptional rural healthcare. Significant resources are committed to the recruitment and retention of workforce. MLHD has a program of proactive initiatives and incentives to attract and retain a skilled, engaged, passionate and fit for purpose workforce. This includes encouraging people in our communities into health work, boosting locally trained health care workers to work at MLHD and fostering pathways from overseas and across Australia to work at MLHD. In addition, MLHD as part of a NSW Government initiative is undertaking a program of upgrades to staff accommodation at a number of sites.

FOR MORE INFORMATION:

Email: MLHD_Finley_Redevelopment@health.nsw.gov.au

Phone: (02) 9978 5412

Web: [mlhd.health.nsw.gov.au/about us/our building projects](http://mlhd.health.nsw.gov.au/about_us/our_building_projects)