



## Caring for the Finley community now and into the future

In December 2021 the NSW Government committed \$25 million to enhance the current Finley Health Service to provide high quality and consumer friendly health care service to support the needs of Finley and surrounding communities now.



The Local Health District, in consultation with stakeholders and community has completed the Clinical Services Plan which will inform the scope of the redevelopment. Master Planning will commence in late 2022.



The redevelopment will provide a significant improvement on the current Finley Health Service facility.



Murrumbidgee Local Health District will work closely with Health Infrastructure, and the community to plan the redevelopment.

### How to build a hospital

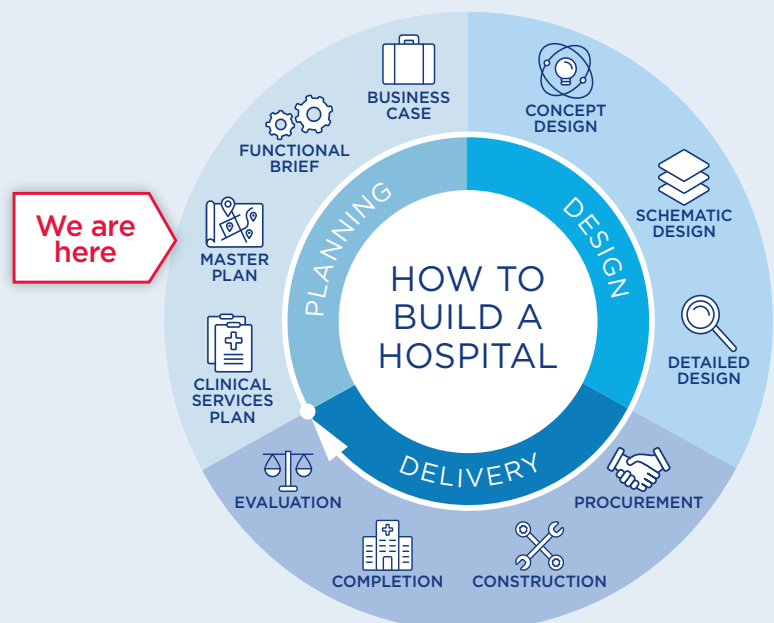
There are three distinct phases:

- planning
- design
- delivery

Each development is tailored to a community's unique needs. The Finley Health Service is in the planning phase.

Visit the Health Infrastructure website for more information:

[www.hinfra.health.nsw.gov.au/our-business/how-to-build-a-hospital](http://www.hinfra.health.nsw.gov.au/our-business/how-to-build-a-hospital)



## FAQS

### Why is a Clinical Services Plan important?

The first stage in the redevelopment of a hospital is clinical services planning. The Finley Clinical Services Plan (CSP) helps determine the future requirements for the hospital, confirm the role of the hospital within the District, the range of health care services provided, and how these services may be provided in the future. The CSP outlines the current and projected health service needs of the Finley population up to 2032 and describes future clinical services recommendations to best meet those needs. The Clinical Services Plan has been endorsed by the Murrumbidgee Local Health District.

### What happens after the CSP is completed?

A master plan will be prepared and informed by the design team, in collaboration with clinicians, staff and community. The master plan is a high level map that identifies the key elements of the hospital, shows the space each service may require and how they best connect and function with each other. It defines and prioritises areas for the new hospital, now and into the future.

### What services and facilities will be included in the Finley Health Service?

Planning is underway to redevelop the Finley Health Service. The redevelopment will provide a range of updated health services specific to the needs of community. The full range of services delivered as part of the redevelopment will be identified through the planning phase, however all the existing services will continue to be provided into the future.

### When will work start on the Finley Health Services redevelopment project?

Commencing a redevelopment requires in depth planning to determine the most appropriate outcome which best meets the needs of the community. To support this process a lead consultant team has been appointed:

Architect: HDR Pty Ltd  
Project Managers: Capital Insight Pty Ltd

The program will be determined as planning progresses. More details will be provided via regular community updates to ensure the community is informed on progress.

### How will the community be kept informed of progress?

Regular updates will be provided to the community via newsletters, the Murrumbidgee Local Health district website and through the planning process.

### How much consultation will take place during the planning and design phase?

During the design process, the project team will consult with Project User Groups (PUGs) on various aspects of the building's design. Participation from user groups is important in developing the design to ensure the design meets the needs of clinicians and other staff including nurses and hospital managers, as well as patients and the community.

### How can you be involved?

Health professionals, consumers, and communities across the Finley region all have an important role in shaping key aspects of the new Finley Health Service. Staff and community information sessions will be held to provide opportunities to meet the consultants and outline where you can be involved and provide input.

FOR MORE INFORMATION ABOUT THE DEVELOPMENT:

**Web:** [mlhd.health.nsw.gov.au/about-us/our-building-projects/finley-hospital-redevelopment](http://mlhd.health.nsw.gov.au/about-us/our-building-projects/finley-hospital-redevelopment)