

Murrumbidgee LHD Areas of Disadvantage

Australian Bureau of Statistics - Socioeconomic Indexes 2021 - Released April 2023

The Index of Relative Socio-economic Disadvantage (IRSD) is a general socio-economic index that summarises a range of information about the economic and social conditions of people and households within an area (Appendix 1). Unlike the other indexes, this index includes only measures of relative disadvantage. A low score indicates relatively greater disadvantage in general. For example, an area could have a low score if there are (among other things): many households with low income, many people with no qualifications, or many people in low skill occupations. A high score indicates a relative lack of disadvantage in general. For example, an area may have a high score if there are (among other things): few households with low incomes, few people with no qualifications, and few people in low skilled occupations.

The SEIFA score of 1000 is the national mean, scores below 1000 show higher disadvantage than the average and scores above 1000 show less disadvantage. A score of 500 does not indicate twice as much disadvantage as a score of 1000, a decile band of 1 indicates the top 10 per cent most disadvantaged areas.

Narrandera LGA had the greatest average disadvantage within MLHD, it sits in the 2nd decile indicating it is in the most disadvantaged fifth (or 20%) of LGAs in Australia and NSW. All the LGAs in MLHD sit below the mean Australian score of 1000 with Greater Hume, Murray River and Bland having the least disadvantage in MLHD (Table 1, Figure 1 and Figure 2).

Averaging scores to LGA level may mask pockets of disadvantage at the smaller geographic levels. The LGAs can be examined in detail at the Statistical Area Level 1 (SA1). SA1s generally have a population of 200 to 800 people, and an average population of about 400 people. Correctional Centres of more than 200 people are assigned their own SA1, as are educational campuses and are not included in the SEIFA indices. The variation in average disadvantage scores by geography can be seen in Figure 4 and specifically by SA1 in Figure 3. Murray River, Griffith and Wagga Wagga (and Albury) have the widest range of scores indicating a broad social gradient of high levels of disadvantage to relatively low levels.

Around 22,300 people in total in MLHD (9.0%) live in SA1 areas with disadvantage scores among the top 10% most disadvantaged in Australia (Table 2). MLHD in general, could be considered more disadvantaged than NSW and Australian averages where 8.8% and 7.2% respectively, live in these highly disadvantaged areas. Around one fifth of the population of Narrandera (23%) and Junee (18%) live in highly disadvantaged areas. Griffith, Hilltops, Leeton, Snowy Valleys and Wagga Wagga LGAs have 10-14% of their population living in highly disadvantaged areas (Figure 5 and Table 2). Certain pockets of high disadvantage exist across MLHD especially in urban areas of Griffith, Leeton, Wagga Wagga and Young (Figure 6). More maps at suburb area show distinct areas of disadvantage scattered through the LHD (**Error! Reference source not found. to Error! Reference source not found.**).

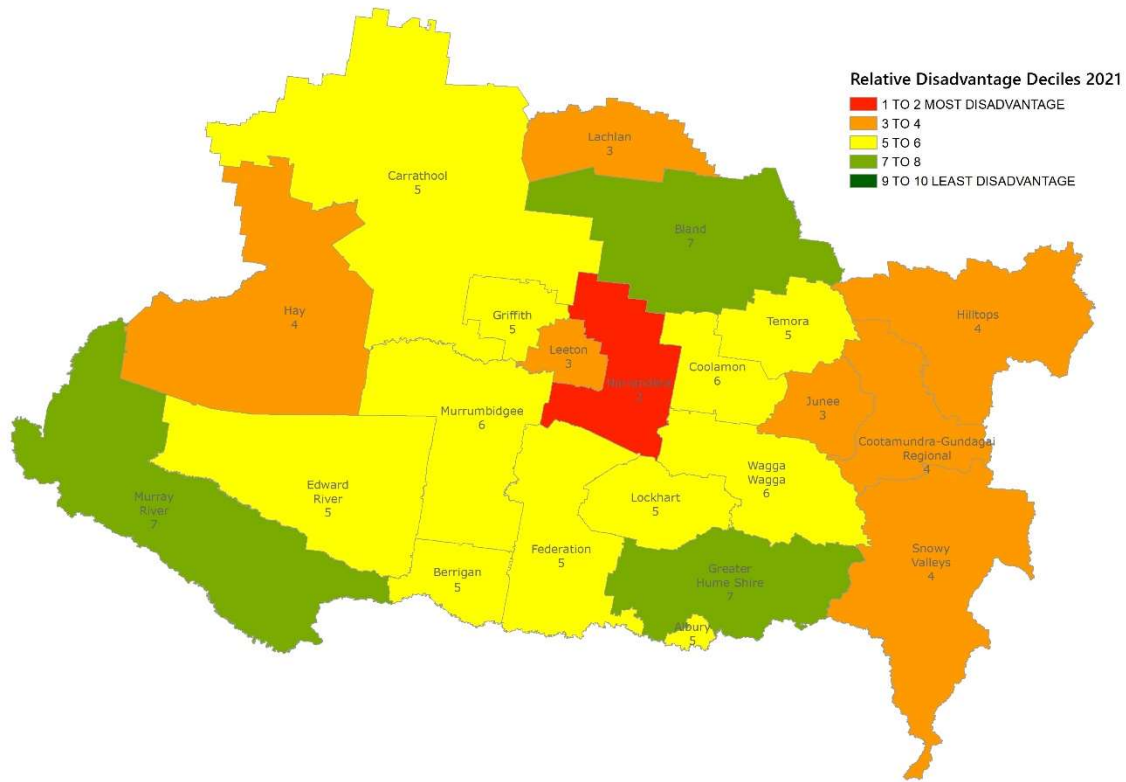


Figure 1 - Socioeconomic disadvantage quintile map, MLHD LGAs, 2021

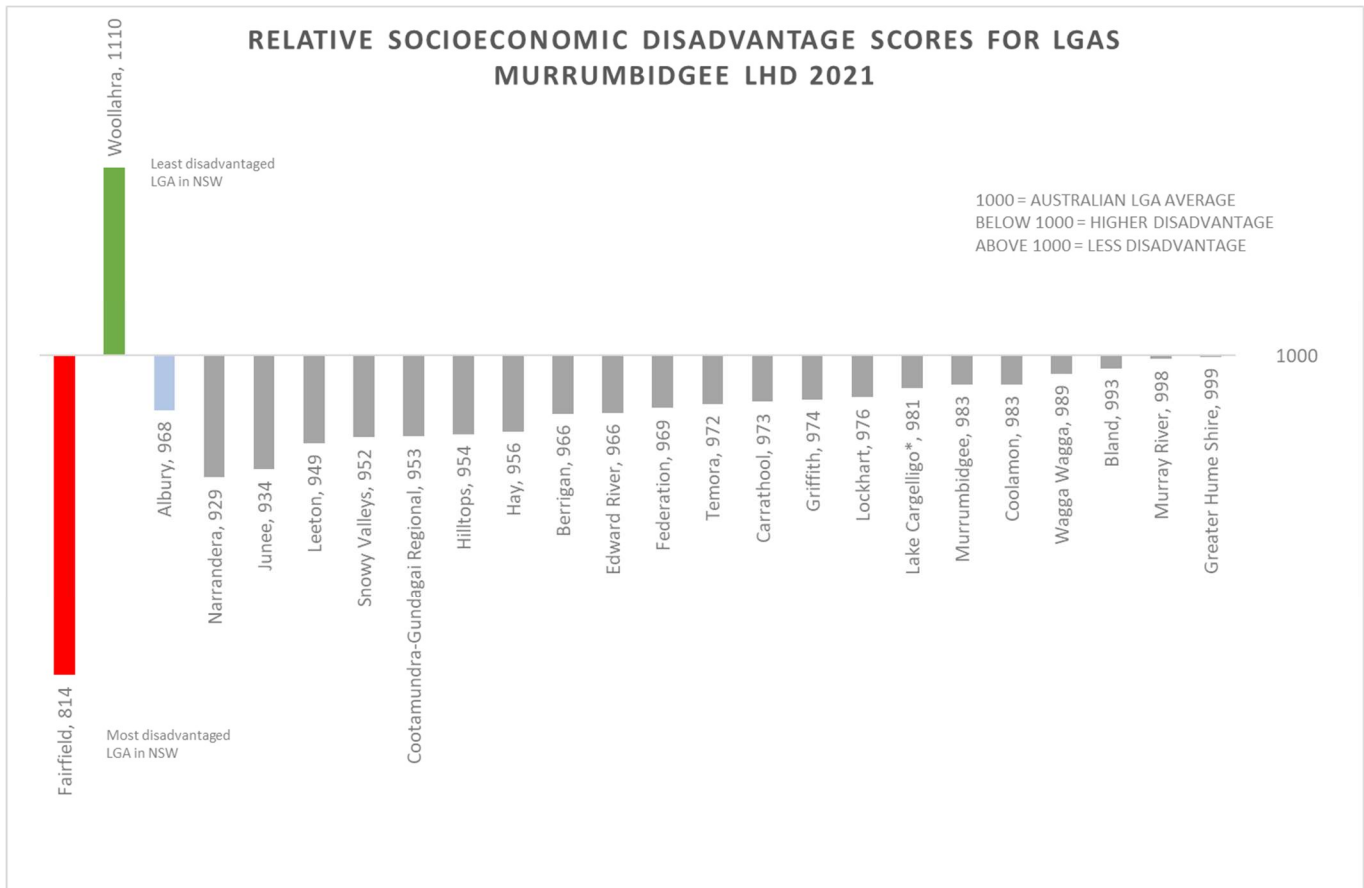


Figure 2 - Socioeconomic disadvantage scores MLHD LGAs 2021

Table 1 - Socioeconomic disadvantage score details by LGA

2021 Local Government Area (LGA) Name	Rank in LHD	Usual Resident Population	Score	LGA in Australia			LGA in NSW			Minimum score for SA1s in area	Maximum score for SA1s in area	% Usual Resident Population without an SA1 level score	% of population in Decile 1
				Rank	Decile	Percentile	Rank	Decile	Percentile				
Berrigan	8	8665	966	225	5	42	47	4	37	812	1107	0.0%	7.5%
Bland	19	5547	993	334	7	61	85	7	66	760	1082	0.0%	3.8%
Carrathool	12	2866	973	251	5	46	57	5	44	920	1089	0.3%	0.0%
Coolamon	17	4385	983	292	6	54	71	6	55	801	1079	0.0%	8.0%
Cootamundra-Gundagai Regional	5	11403	953	174	4	32	35	3	27	805	1073	0.0%	8.6%
Edward River	9	8456	966	230	5	42	49	4	38	734	1092	0.1%	3.5%
Federation	10	12899	969	237	5	44	53	5	41	825	1088	0.1%	5.5%
Greater Hume Shire	21	11157	999	361	7	66	90	7	70	890	1105	0.3%	0.0%
Griffith	13	27086	974	256	5	47	59	5	46	492	1126	0.1%	13.6%
Hay	7	2882	956	183	4	34	37	3	29	799	1089	0.0%	9.3%
Hilltops	6	19254	954	179	4	33	36	3	28	764	1096	0.5%	12.4%
Junee	2	6415	934	119	3	22	22	2	17	802	1099	15.0%	17.8%
Lake Cargelligo*	15	2814	981	283	6	52	67	6	52	914	1053	0.0%	0.0%
Leeton	3	11452	949	162	3	30	32	3	25	658	1100	0.0%	12.2%
Lockhart	14	3319	976	264	5	49	61	5	47	910	1073	0.0%	0.0%
Murray River	20	12850	998	358	7	66	88	7	68	489	1091	0.0%	1.6%
Murrumbidgee	16	3353	983	291	6	54	70	6	54	863	1158	0.0%	0.0%
Narrandera	1	5698	929	108	2	20	18	2	14	693	1100	0.0%	23.4%
Snowy Valleys	4	14891	952	172	4	32	34	3	27	755	1115	0.1%	11.1%
Temora	11	6034	972	244	5	45	55	5	43	880	1061	0.0%	0.0%
Wagga Wagga	18	67609	989	318	6	59	79	7	61	499	1142	1.7%	10.5%
MLHD										489	1158	0.9%	9.0%
Albury		56093	968	232	5	43	51	4	40	535	1126	0.0%	14.0%
NSW													8.8%
Australia													7.2%

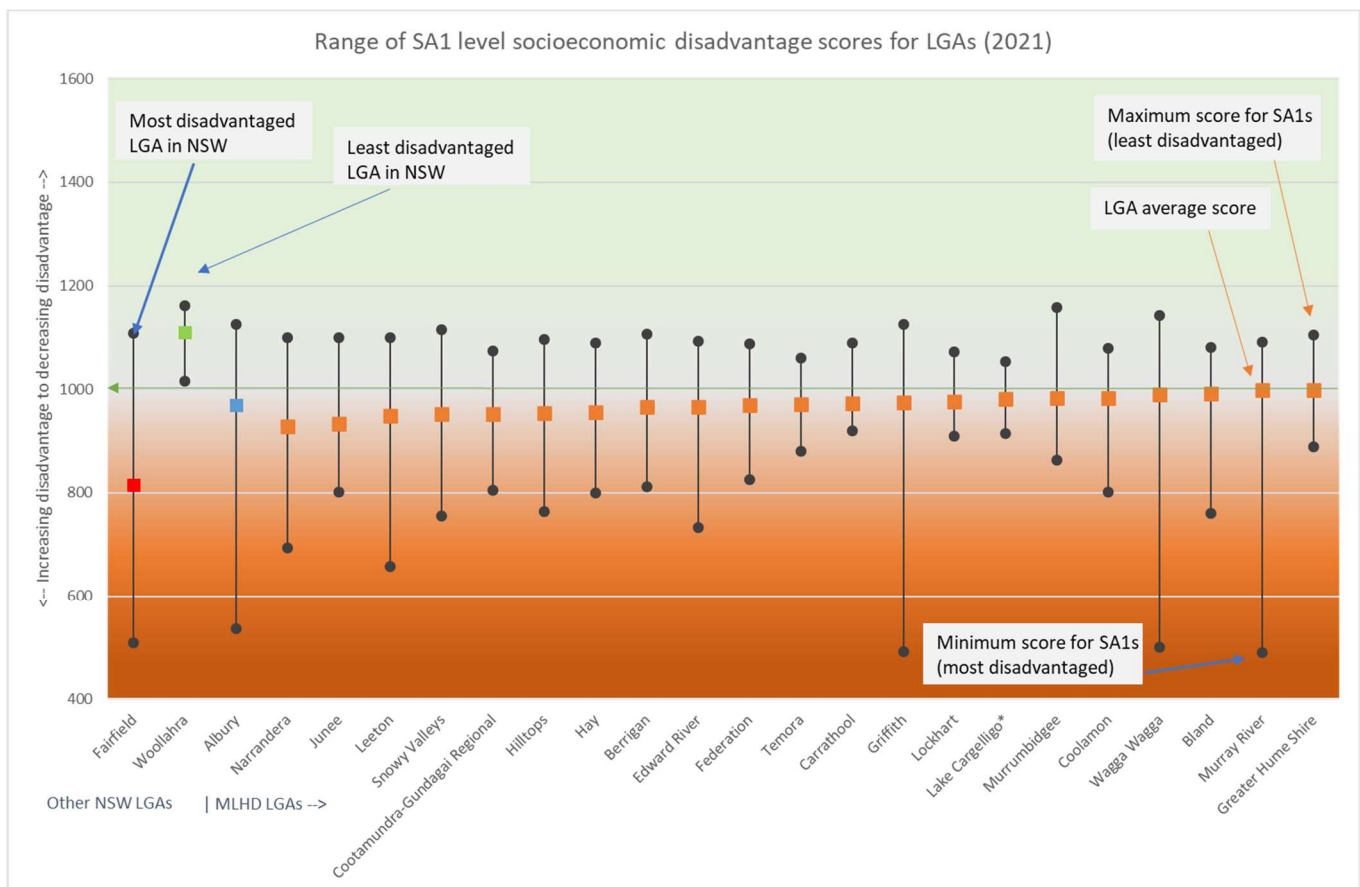
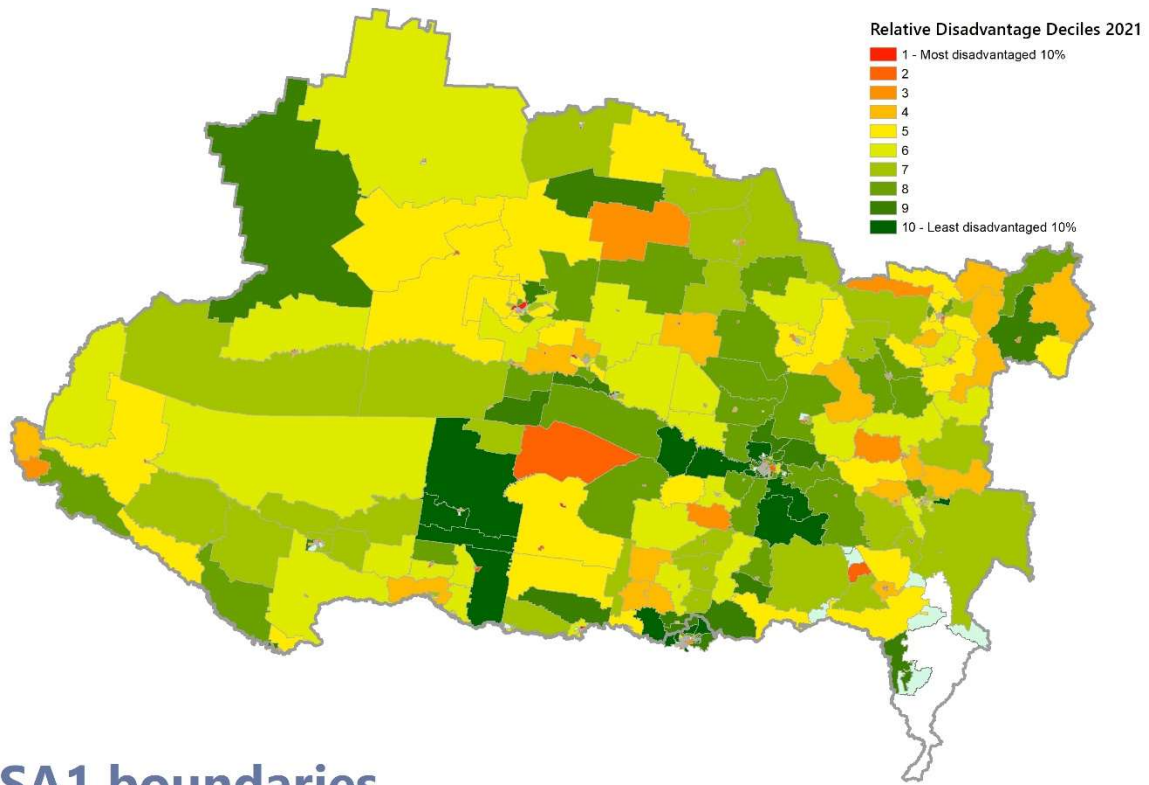
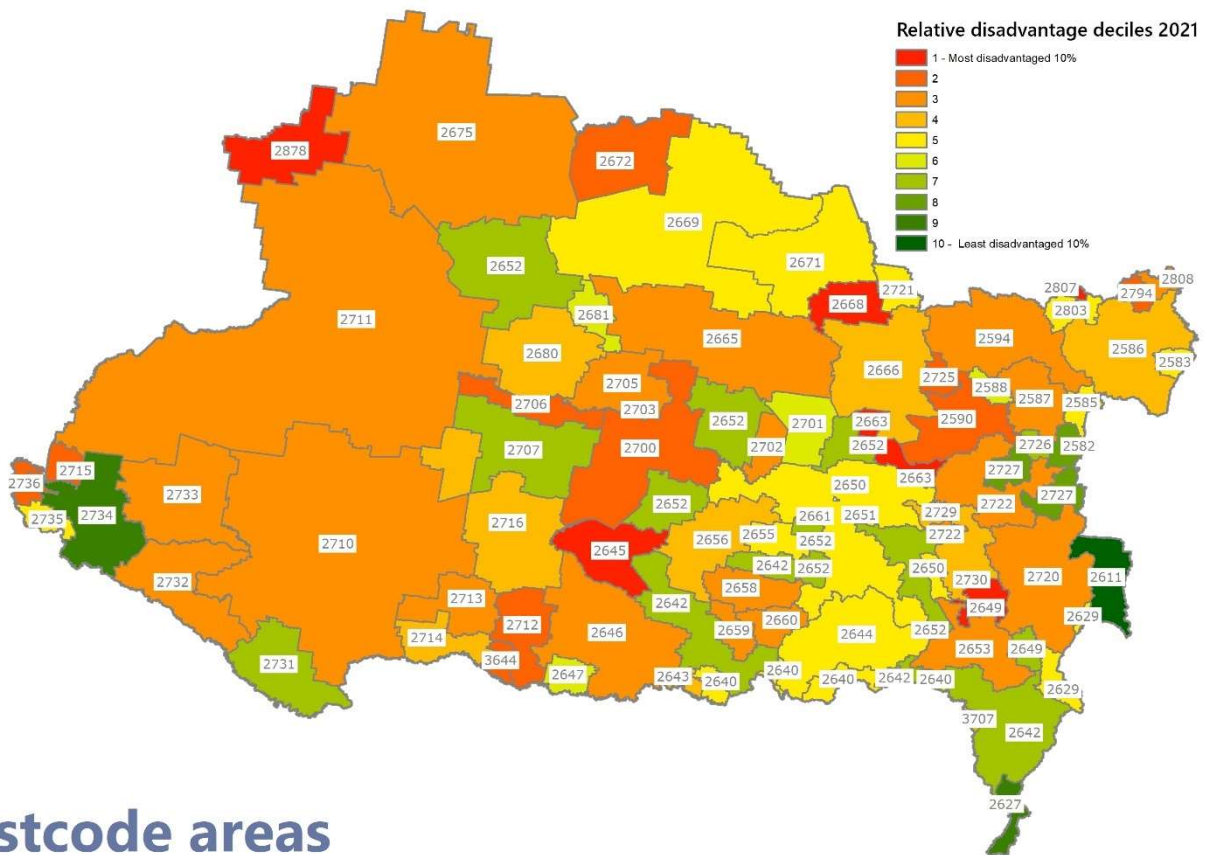


Figure 3 - Range of SA1 disadvantage scores by LGA



SA1 boundaries



Postcode areas

Figure 4 - Disadvantage deciles by SA1 and postcode, MLHD

Per cent of LGA population living in the most highly disadvantaged areas

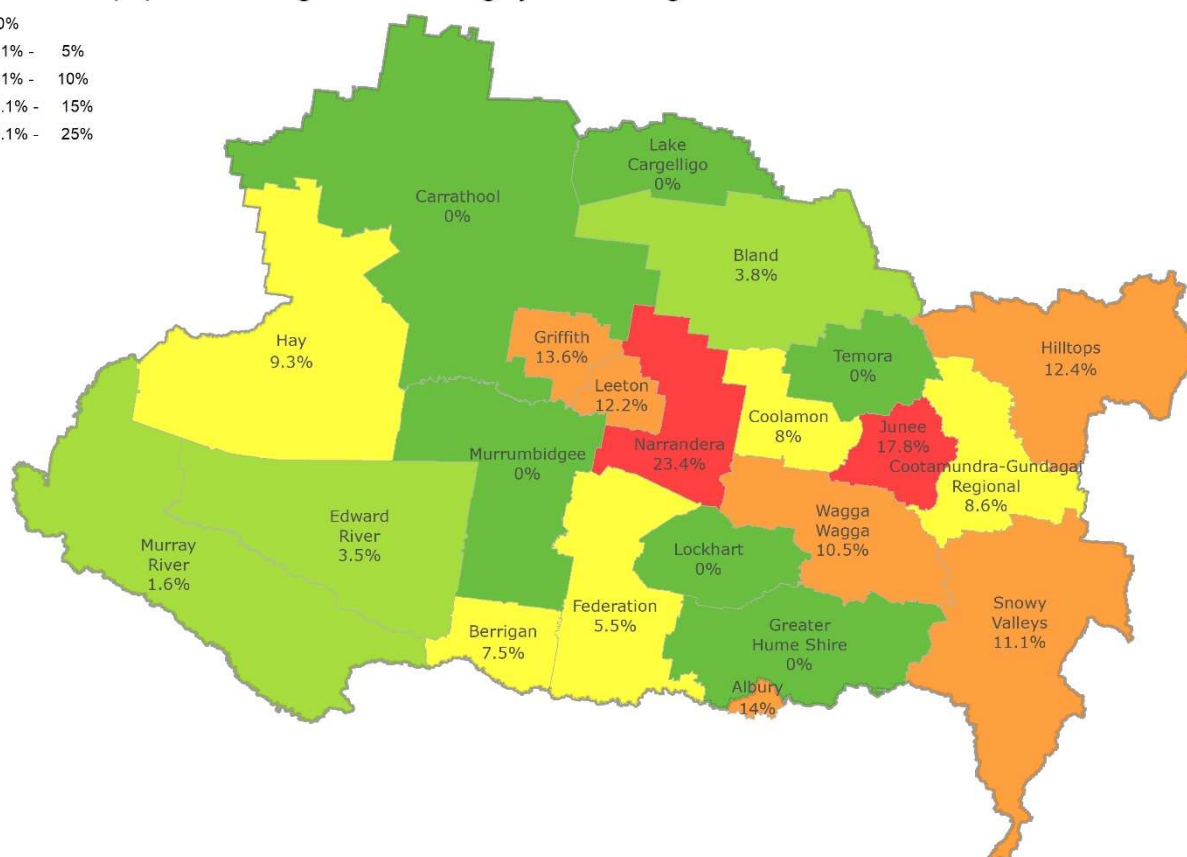
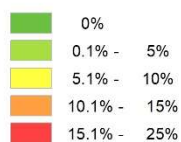


Figure 5 - Population distribution of LGAs living in areas of high disadvantage.

Table 2 - Population distribution in lowest and highest disadvantage deciles by LGA

Score range Decile band LHD/LGA	Disadvantage Scores						Total population in excluded SA1s		Total Population	Total Percent
	<500 to 850		850 to 1100		1100 to >1300		Population	Percent		
	- Decile 1 Population	Percent	- Decile 2 to 9 Population	Percent	- Decile 10 Population	Percent				
MLHD	22329	9.0%	214999	86.3%	9351	3.8%	2341	0.9%	249020	100.0%
Narrandera	1334	23.4%	4358	76.6%	0	0.0%	0	0.0%	5692	100.0%
Junee	1142	17.8%	4314	67.2%	0	0.0%	963	15.0%	6419	100.0%
Griffith	3671	13.6%	22926	84.7%	458	1.7%	25	0.1%	27080	100.0%
Hilltops	2382	12.4%	16759	87.1%	0	0.0%	95	0.5%	19236	100.0%
Leeton	1400	12.2%	10047	87.8%	0	0.0%	0	0.0%	11447	100.0%
Snowy Valleys	1651	11.1%	13073	87.9%	146	1.0%	10	0.1%	14880	100.0%
Wagga Wagga	7074	10.5%	51530	76.2%	7847	11.6%	1180	1.7%	67631	100.0%
Hay	268	9.3%			0	0.0%	0	0.0%	2883	100.0%
Cootamundra-Gundagai Regional	986	8.6%			0	0.0%	0	0.0%	11416	100.0%
Coolamon	352	8.0%			0	0.0%	0	0.0%	4397	100.0%
Berrigan	652	7.5%			278	3.2%	0	0.0%	8660	100.0%
Federation	704	5.5%			0	0.0%	15	0.1%	12907	100.0%
Bland	212	3.8%			0	0.0%	0	0.0%	5540	100.0%
Edward River	298	3.5%			0	0.0%	6	0.1%	8451	100.0%
Murray River	203	1.6%			0	0.0%	0	0.0%	12843	100.0%
Carrathool	0	0.0%			0	0.0%	10	0.3%	2873	100.0%
Greater Hume	0	0.0%			230	2.1%	37	0.3%	11140	100.0%
Lake Cargelligo	0	0.0%			0	0.0%	0	0.0%	2814	100.0%
Lockhart	0	0.0%	3322	100.0%	0	0.0%	0	0.0%	3322	100.0%
Murrumbidgee	0	0.0%	2969	88.3%	392	11.7%	0	0.0%	3361	100.0%
Temora	0	0.0%	6028	100.0%	0	0.0%	0	0.0%	6028	100.0%
Albury	7840	14.0%	43162	76.9%	5076	9.0%	28	0.0%	56106	100.0%
NSW	708324	8.8%	6213377	77.1%	1108607	13.8%	30762	0.4%	8061070	100.0%
Australia	1838966	7.2%	20812224	81.9%	2598553	10.2%	172886	0.7%	25422629	100.0%

* Some SA1s are not populated enough or do not fit the criteria for inclusion, e.g. the correctional facility population in Junee is not included in the index.

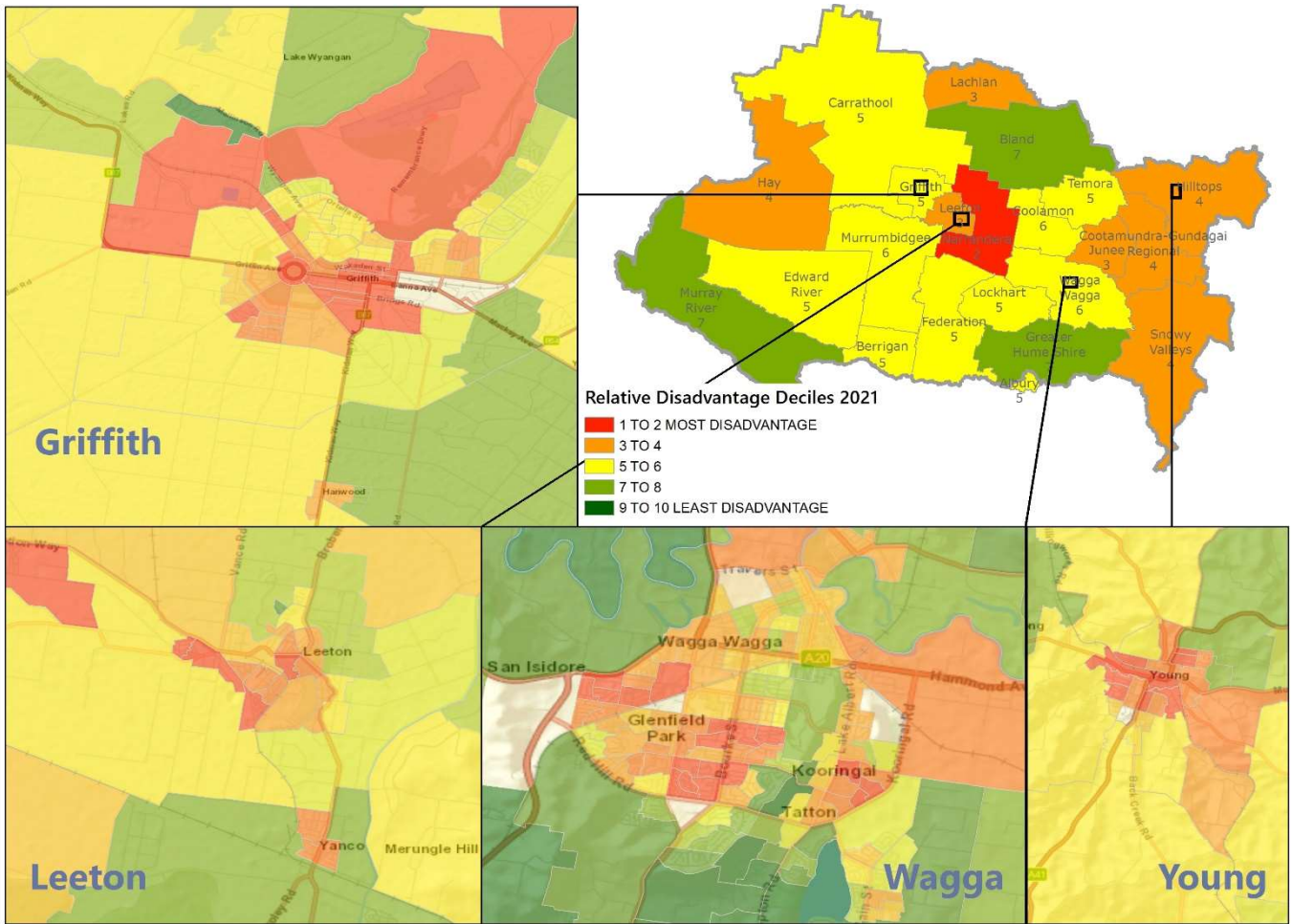


Figure 6 - Socioeconomic disadvantage decile maps for selected areas by SA1

Suburbs

Disadvantage deciles

IRSD_Dec

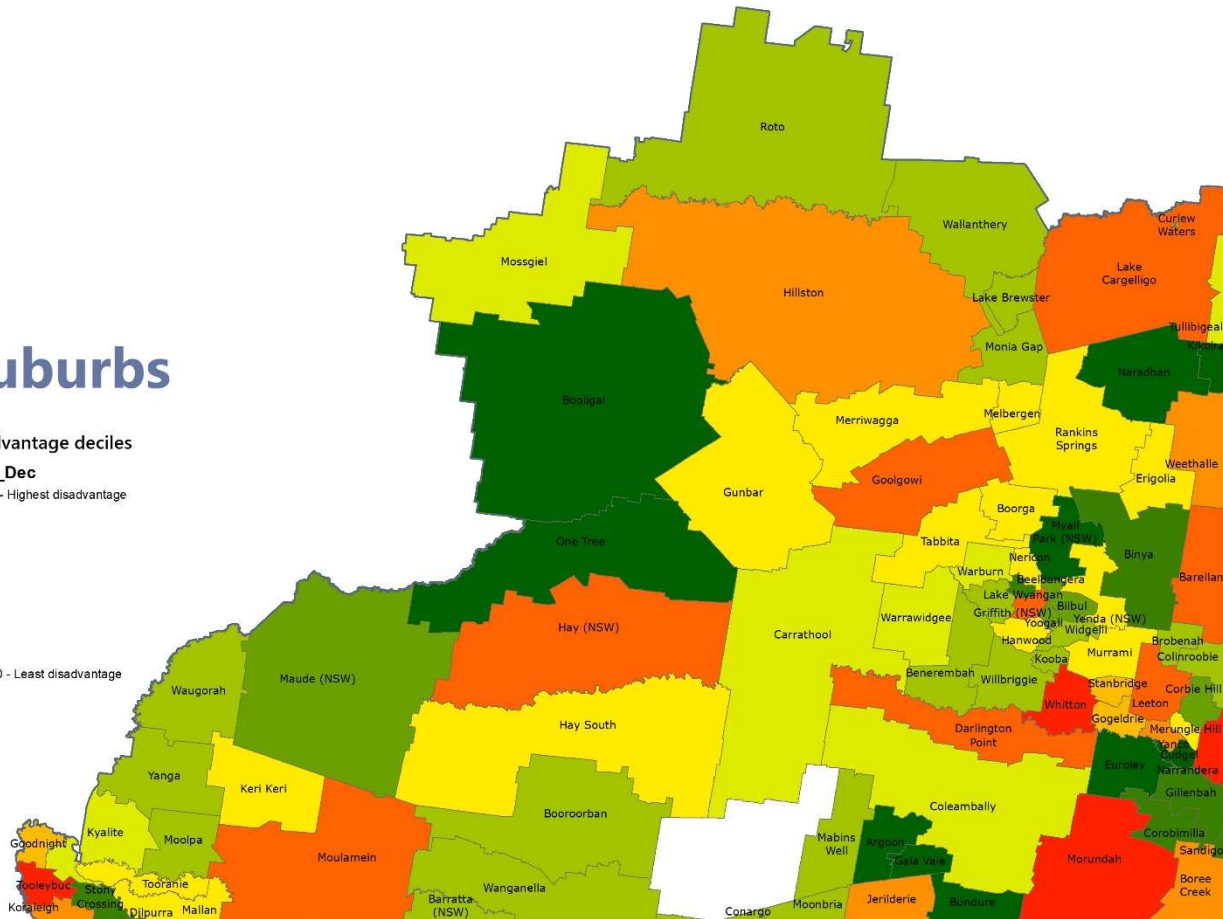
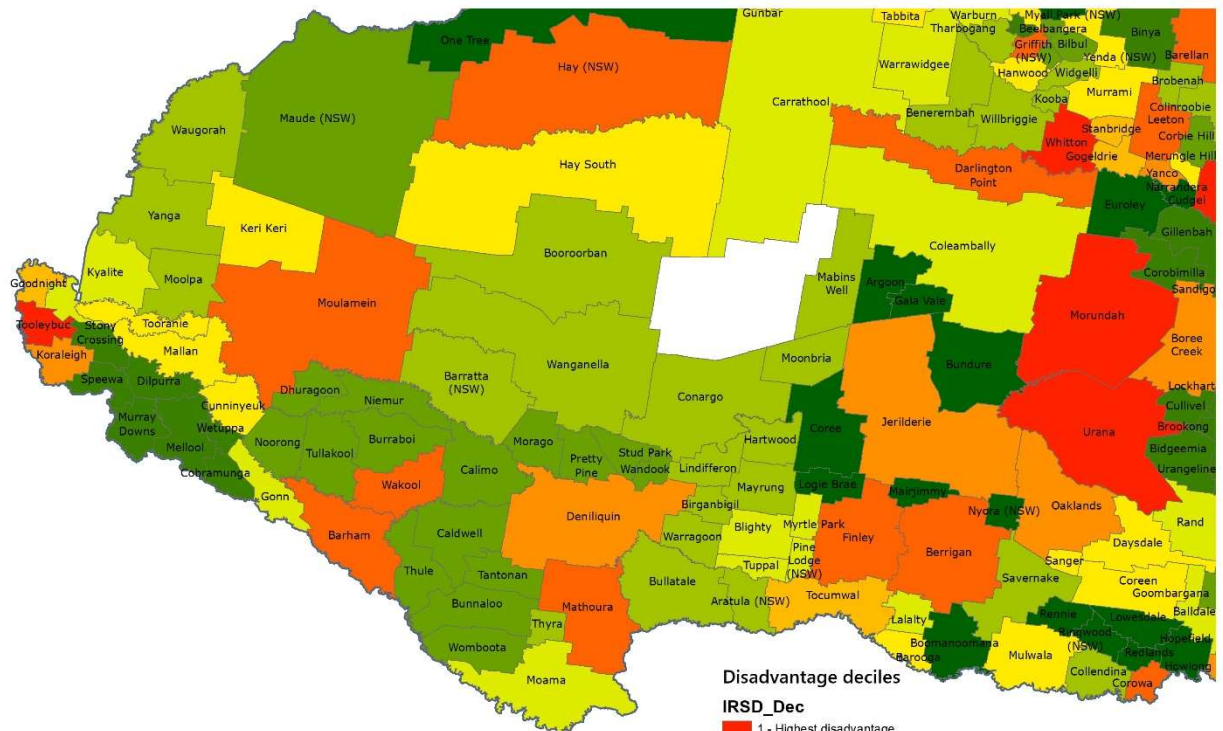


Figure 7 - Disadvantage deciles by suburb - north west MLHD



Disadvantage deciles

IRSD_Dec



Suburbs

Figure 8 - Disadvantage deciles by suburb - south west MLHD

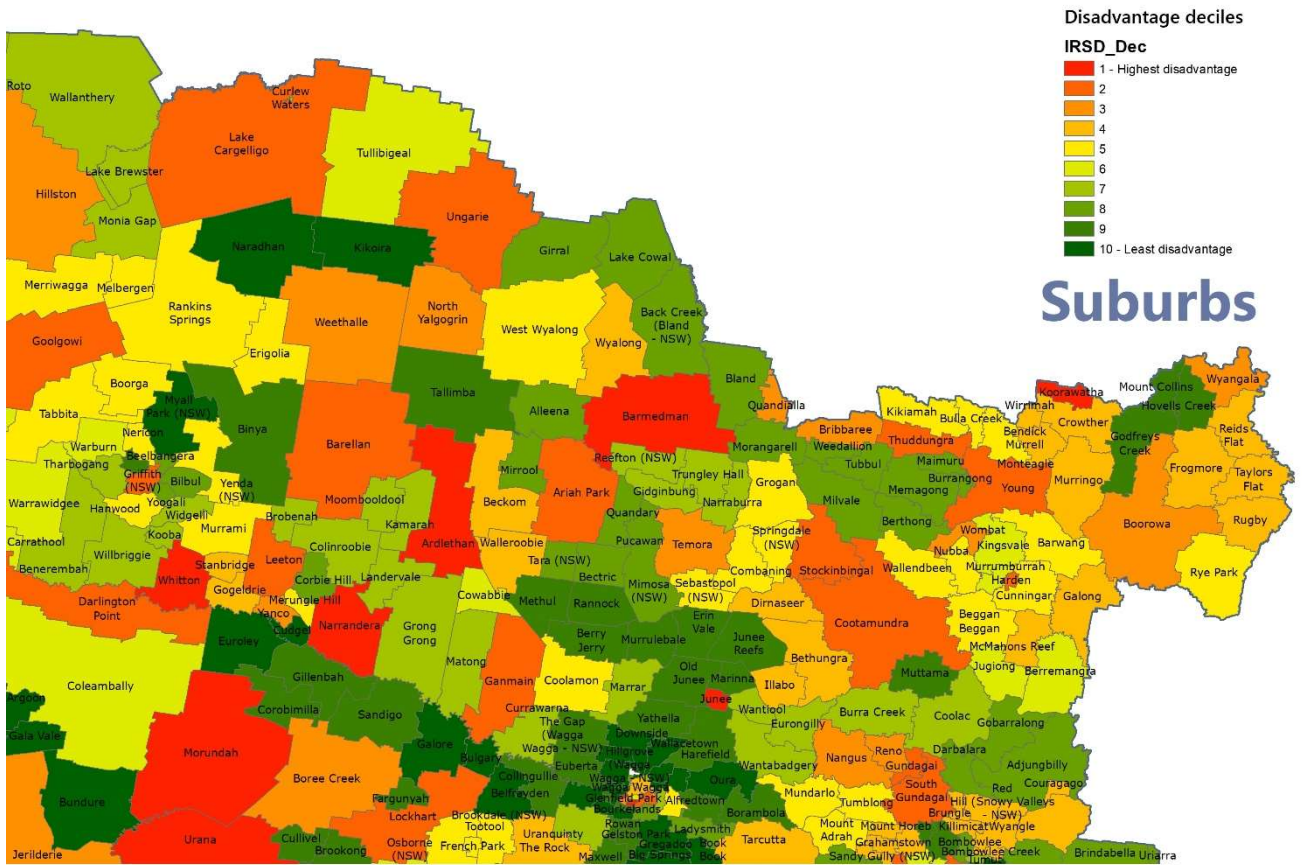


Figure 9 - Disadvantage deciles by suburb - north east MLHD

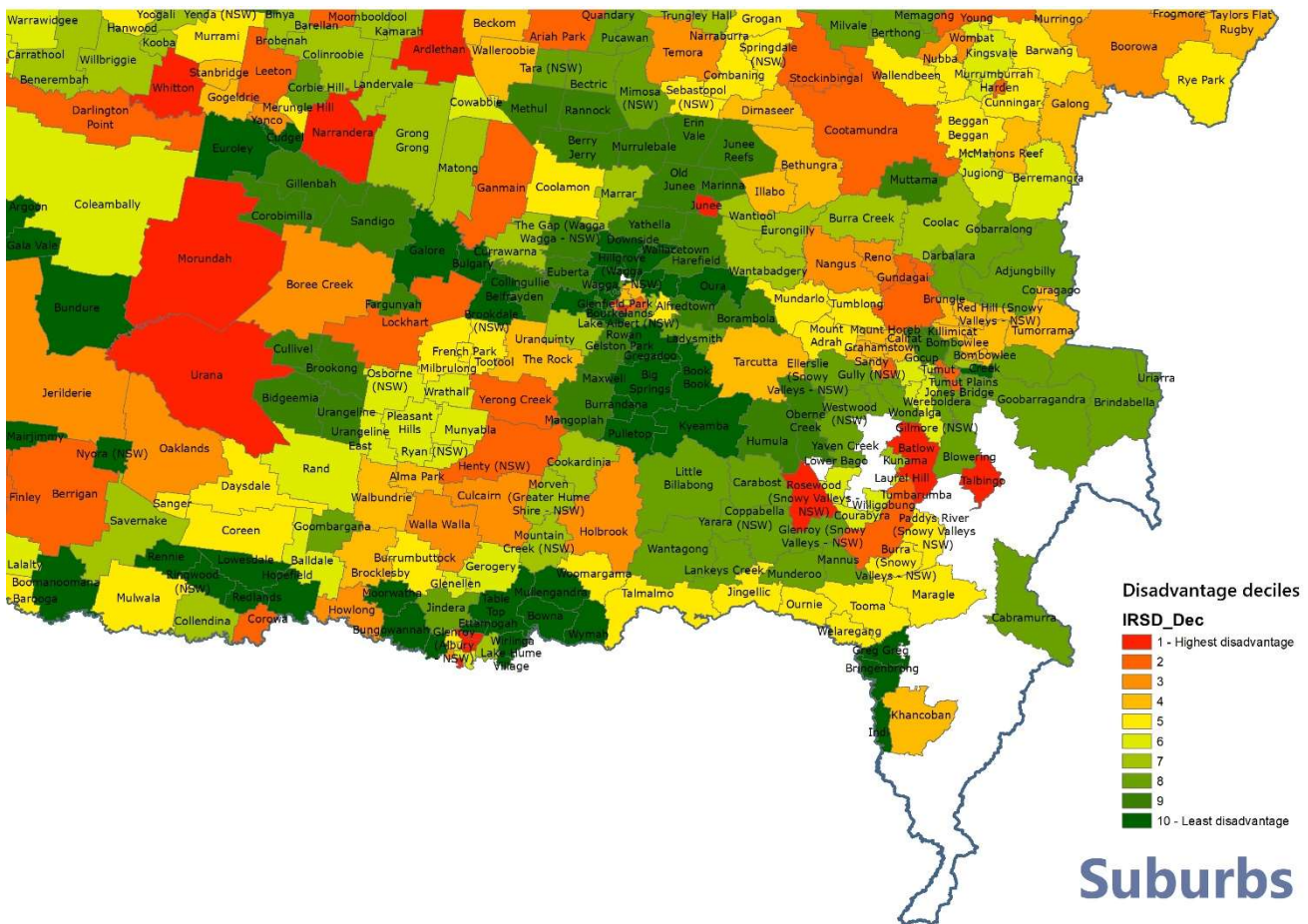


Figure 10 - Disadvantage deciles by suburb - south west MLHD

References and more information:

Background Information on socioeconomic indices from ABS:

<https://www.abs.gov.au/statistics/people/people-and-communities/socio-economic-indexes-areas-seifa-australia/latest-release>

Interactive maps for all Australia at different geographic levels:

<https://experience.arcgis.com/experience/32dcbb18c1d24f4aa89caf680413c741/page/IRSD/>

Written by Kim Gilchrist, Public Health Unit, Murrumbidgee LHD, email: kim.gilchrist@health.nsw.gov.au

Date: June 2023

Appendix 1:

Index of Relative Socioeconomic Disadvantage – indicators of disadvantage

Variable name	Variable description
INC_LOW	Per cent of people with stated household equivalised income between \$1 and \$25,999 per year
CHILDJOBLESS	Per cent of families with children under 15 years of age who live with jobless parents
NOYEAR12ORHIGHER	Per cent of people aged 15 years and over whose highest level of education is Year 11 or lower (Includes Certificate I and II)
LOWRENT	Per cent of occupied private dwellings paying rent less than \$250 per week (excluding \$0 per week)
UNEMPLOYED	Per cent of people (in the labour force) who are unemployed
OCC_LABOUR	Per cent of employed people classified as Labourers
DISABILITYU70	Per cent of people aged under 70 who need assistance with core activities due to a long-term health condition, disability, or old age
ONEPARENT	Per cent of one parent families with dependent offspring only
OVERCROWD	Per cent of occupied private dwellings requiring one or more extra bedrooms.
OCC_DRIVERS	Per cent of employed people classified as Machinery Operators and Drivers
SEPDIVORCED	Per cent of people aged 15 years and over who are separated or divorced
NOEDU	Per cent of people aged 15 years and over who have no educational attainment
OCC_SERVICE_L	Per cent of employed people classified as low skill (skill level 4 and 5) Community and Personal Service workers
NOCAR	Per cent of occupied private dwellings with no cars
ENGLISHPOOR	Per cent of people who do not speak English well

Source: Australian Bureau of Statistics, Socio-Economic Indexes for Areas (SEIFA), Australia methodology 2021