



## Caring for the Temora community now and into the future

In December 2021 the NSW Government committed \$80 million to providing a high quality, contemporary and consumer friendly health care service to support the needs of the entire Temora community.



The Local Health District, in consultation with stakeholders and community has completed the Clinical Services Plan which will inform the scope of the redevelopment.



Murrumbidgee Local Health District will work closely with Health Infrastructure, and the Temora community to plan the redevelopment.



The redevelopment will provide a welcoming and modern purpose-built facility which can support the latest advances in health care delivery.



Using the latest technology and models of care, the hospital will deliver health services closer to home.

### How to build a hospital

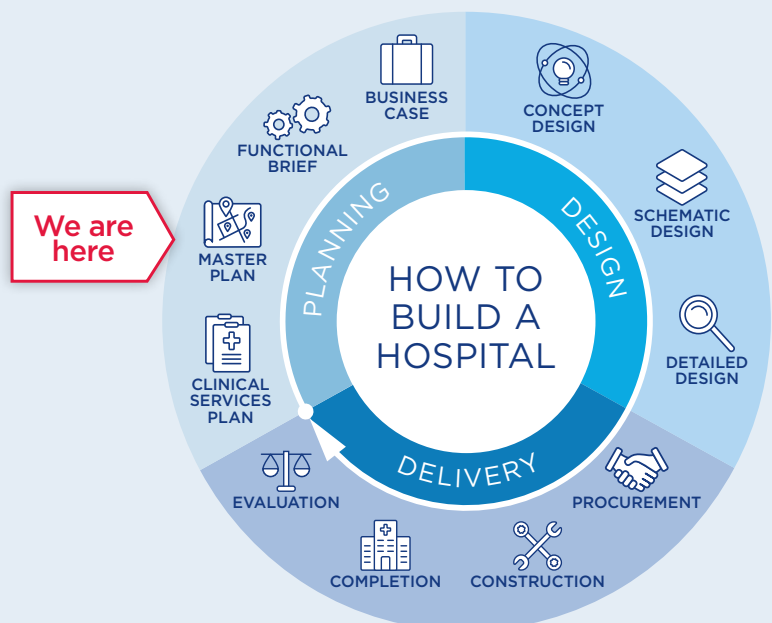
There are three distinct phases:

- planning
- design
- delivery

Each development is tailored to a community's unique needs. The Temora Health Service is in the planning phase.

Visit the Health Infrastructure website for more information:

[www.hinfra.health.nsw.gov.au/our-business/how-to-build-a-hospital](http://www.hinfra.health.nsw.gov.au/our-business/how-to-build-a-hospital)



## FAQS

### What stage is the project up to?

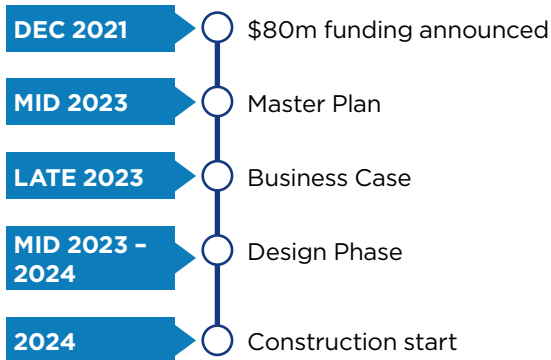
There are a number of stages and processes that need to be taken in a hospital redevelopment project to ensure the appropriate health services are delivered to the local community. Importantly, we need to continue to provide all existing hospital services throughout the redevelopment.

In the planning stage of the Temora Health Service Redevelopment, the Health Service Plan has been completed. The Master Plan for the site is being developed and will be available for stakeholders to view and provide feedback in the coming months.

### What services and facilities will be included in the Temora Health Service?

The redevelopment will provide a range of updated health services specific to the needs of community. The full range of services delivered as part of the redevelopment will be identified through the planning phase, however all the existing services will continue to be provided into the future.

### What is the anticipated project timeline?



### How much consultation will take place during the planning and design phase?

During the design process, the project team will consult with Project User Groups (PUGs) on various aspects of the building's design. Participation from user groups is important in developing the design to ensure the design meets the needs of clinicians and other staff including nurses and hospital managers, as well as patients and the community.

### How can you be involved?

Health professionals, consumers, and communities across the Temora region all have an important role in shaping key aspects of the new Temora Health Service. Staff and community information sessions have been held and more are coming up to provide opportunities to meet the consultants and outline where you can be involved and provide input.

### Who is involved in the Redevelopment?

Health Infrastructure (HI) is working with the Murrumbidgee Local Health District (MLHD) to plan for the upgrade. The lead consultant team for the Redevelopment has been appointed. A dedicated Redevelopment Project Team has been formed which includes Capital Insight (Project Manager), HDR (Architect), HI and MLHD.

### When will work start on the Temora Health Services redevelopment project?

Commencing a redevelopment requires in depth planning to determine the most appropriate outcome which best meets the needs of the community.

The program will be determined as planning progresses. More details will be provided via regular community updates to ensure the community is informed on progress.

### Will construction impact on health services?

Services will continue at Temora Health Service during construction. Every effort will be made to minimise disruption. Staff and the community will be informed of any planned change.

### How is MLHD addressing staffing challenges?

MLHD recognises that dedicated staff play a vital role in delivery of exceptional rural healthcare. Significant resources are committed to the recruitment and retention of workforce. MLHD has a program of proactive initiatives and incentives to attract and retain a skilled, engaged, passionate and fit for purpose workforce. This includes encouraging people in our communities into health work, boosting locally trained health care workers to work at MLHD and fostering pathways from overseas and across Australia to work at MLHD. In addition, MLHD as part of a NSW Government initiative is undertaking a program of upgrades to staff accommodation at a number of sites.

FOR MORE INFORMATION:

Email: [MLHD Temora Redevelopment@health.nsw.gov.au](mailto:MLHD_Temora_Redevelopment@health.nsw.gov.au)

Phone: (02) 9978 5412

Web: [mlhd.health.nsw.gov.au/about us/our building projects](http://mlhd.health.nsw.gov.au/about-us/our-building-projects)