



Caring for the Temora community now and into the future

In December 2021 the NSW Government committed \$80 million to providing a high quality, contemporary and consumer friendly health care service to support the needs of the entire Temora community.



The Local Health District, in consultation with stakeholders and community is finalising the Clinical Services Plan which will inform the scope of the redevelopment.



Murrumbidgee Local Health District will work closely with Health Infrastructure, and the Temora community to plan the redevelopment.



The redevelopment will provide a significant improvement on the current 80-year-old Temora District Hospital facility.



Using the latest technology and models of care, the hospital will deliver health services closer to home.

How to build a hospital

There are three distinct phases:

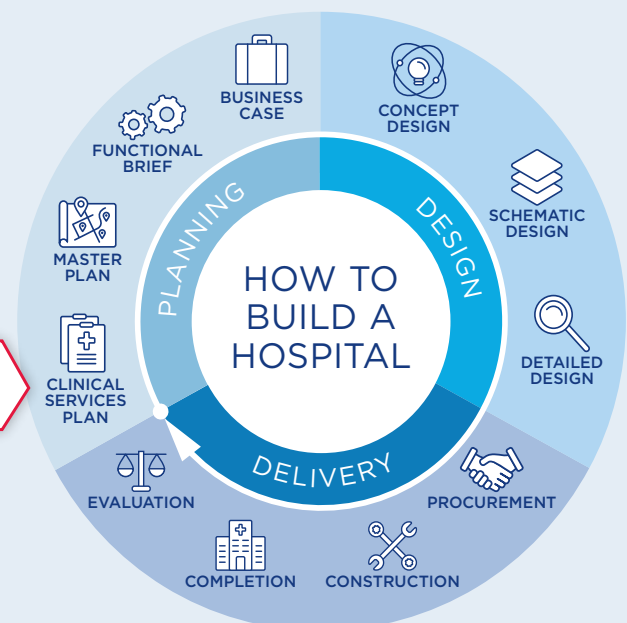
- planning
- design
- delivery

Each development is tailored to a community's unique needs. The Temora Health Service is in the planning phase.

Visit the Health Infrastructure website for more information:

www.hinfra.health.nsw.gov.au/our-business/how-to-build-a-hospital

We are here



FAQS

Why is a Clinical Services Plan important?

The first stage in the development of a new hospital is clinical services planning. The Temora Clinical Services Plan (CSP) helps determine the requirements for a new hospital, confirm the role of the hospital within the District, the range of health care services provided, and how these services may be provided. The CSP outlines the current and projected health service needs of the Temora population up to 2032 and describes future clinical services recommendations to best meet those needs.

How does the CSP inform the delivery of the redeveloped Temora Health Service?

The Master Plan for the Temora Health Service redevelopment will deliver the clinical needs identified in the CSP. Master Planning provides a clear framework that defines and prioritises areas for the new hospital, now and into the future. Master Planning happens after the Clinical Service Plan is complete.

What services and facilities will be included in the Temora Health Service?

Planning is underway to redevelop the Temora Health Service. The redevelopment will provide a range of updated health services specific to the needs of community. The full range of services delivered as part of the redevelopment will be identified through the planning phase, however all the existing inpatient and ambulatory care services will continue to be provided into the future.

When will work start on the Temora Health Services redevelopment project?

Commencing a redevelopment requires in depth planning which will determine the most appropriate outcome which best meets the needs of the community. To support this process a lead consultant team will be appointed. Construction timing will be confirmed after further planning is undertaken. The timing of the project will be determined as planning progresses. More details will be provided via newsletters and updates around the expected project timeframe.

How will the community be kept informed of progress?

Regular updates will be provided to the community via newsletters, the Murrumbidgee Local Health district website and through the planning process.

How much consultation will take place during the planning and design phase?

During the design process, the project team will consult with Project User Groups (PUGs) on various aspects of the building's design. Participation from user groups is important in developing the design to ensure clinicians and other staff including nurses and hospital managers, as well as patients and community representatives, provide input into the infrastructure.

How can you be involved?

Health professionals, consumers, and communities across the Temora region all have an important role in shaping key aspects of the new Temora Health Service. Staff and community information sessions will be held to provide opportunities to meet the consultants and outline where you can be involved and provide input.

What is the next step?

The finalisation of the CSP is essential work which needs to be completed in the planning phase.

A Clinical Services Plan outlines the health services required to meet the community's needs now and into the future and makes recommendations about the best way to deliver these services.

When endorsed by the Murrumbidgee Local Health District Board, the Clinical Services Plan will be provided to the Ministry of Health and Health Infrastructure for commencement of the Master Planning phase of the project.

A master plan will be prepared and informed by the design team, in collaboration with clinicians, operational staff and community members. The master plan is a high level map that identifies the key elements of the hospital, shows the space each requires and how they best connect with each other. It defines and prioritises areas for the new hospital, now and into the future.

FOR MORE INFORMATION ABOUT THE DEVELOPMENT:

Web: mlhd.health.nsw.gov.au/about-us/our-building-projects/temora-health-service-redevelopment