



UPDATE: Improvements to Robin Thomas Reserve, Parramatta

Parramatta Light Rail Stage 1 project

March 2025



Transport for NSW acknowledges the Dharug people as the Traditional Custodians of the lands on which we work and pays respect to Elders past and present.

Parramatta Light Rail connects Westmead to Carlingford via the Parramatta CBD and Camellia.

Diona Ward Joint Venture has been engaged by Transport for NSW to complete upgrade works in Robin Thomas Reserve, Parramatta.

The improvements will feature a new amenities facility for local sporting groups as well as an off-street car park, barbecue area, new trees and landscaping, footpaths, bicycle racks and seating. Transport for NSW is undertaking this work on behalf of the City of Parramatta Council.

What work are we doing?

Work is recommencing to complete the upgrade to Robin Thomas Reserve's northern civic and cultural precinct.

Work activities for the remainder of the project will include:

- Remediation of asbestos ground, under guidance of contamination specialist
- Earthworks and civil works, including new car park and paving
- Demolition of sandstone building
- Construction of amenities building and associated facilities, including tree planting and landscaping.

There is no open risk to the community for the remainder of this work.

When and where we'll be working

Work will be carried out during standard construction hours from **7am to 6pm, Monday to Friday**, and **8am to 1pm on Saturdays**. There will be further notifications for work outside of these hours.

Traffic and pedestrian access

The northern civic and cultural precinct of the Reserve will be closed during construction.

What equipment will be used?

Equipment will include, but is not limited to, excavators, dump trucks, rollers, tipper, concrete agitators, utility vehicles, hand tools, and jack hammers.

What will this mean for you?

There will be some noise associated with this work. Some of the ways we manage noise is by:

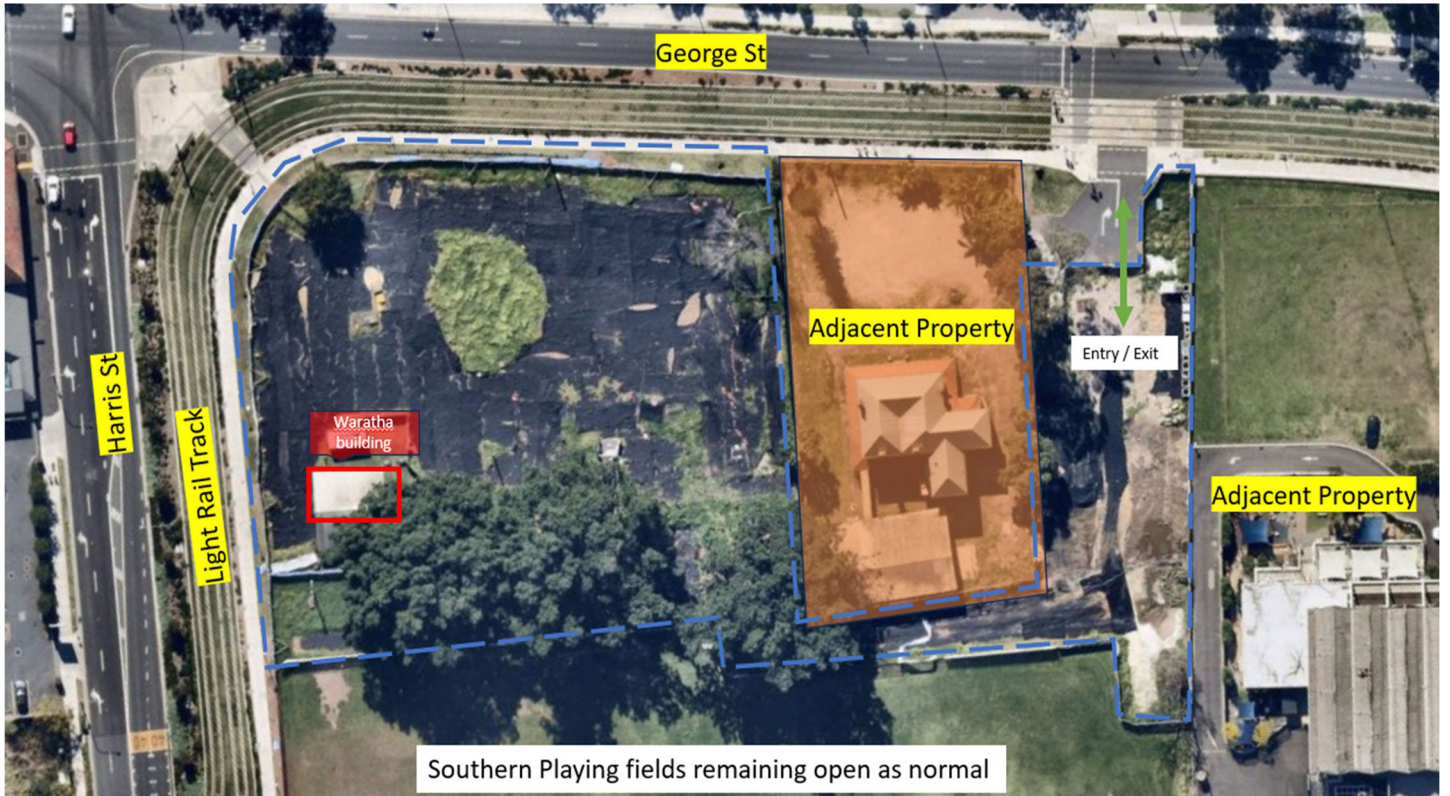
- using noise blankets and non-tonal reversing beepers
- monitoring and reviewing noise and vibration
- turning off vehicles when not in use
- consulting with directly affected residents and businesses.

Safety around light rail vehicles

Whether you're walking, riding a bike, driving or catching public transport, please remember to **stop, listen and look around**. Visit the Parramatta Light Rail safety page at nsw.gov.au/parramatta-light-rail/safety to learn more about staying safe around light rail vehicles.



Location of work area



↔ Site entry/exit - - - - - Site boundary □ Structures to be demolished

Contact us



24-hour community information line
1800 139 389



parramattalightrail@transport.nsw.gov.au



nsw.gov.au/parramatta-light-rail



Level 4, 4 Parramatta Square,
12 Darcy Street, Parramatta NSW 2150



Scan the code to visit our website for
more information



Interpreter service

For languages other than English call 131 450
Arabic • Greek • Hindi • Mandarin • Vietnamese

لطلب خدمة الترجمة الشفهية للغات غير الإنجليزية اتصل
بالرقم **131 450**

Για υπηρεσίες διερμηνείας σε άλλες γλώσσες εκτός από
τα Αγγλικά καλέστε το **131 450**

अंग्रेज़ी के अतिरिक्त अन्य भाषाओं के लिए दुभाषिया सेवा
131 450 पर कॉल करें

获取英语以外的其他语言口译协助服务可以致电**131 450**

Để có dịch vụ thông ngôn cho các ngôn ngữ khác tiếng
Anh, gọi số **131 450**

www.transport.nsw.gov.au/privacy-statement#Your_Privacy



For the latest traffic updates:

Call 132 701, visit livetraffic.com or
download the app Live Traffic NSW