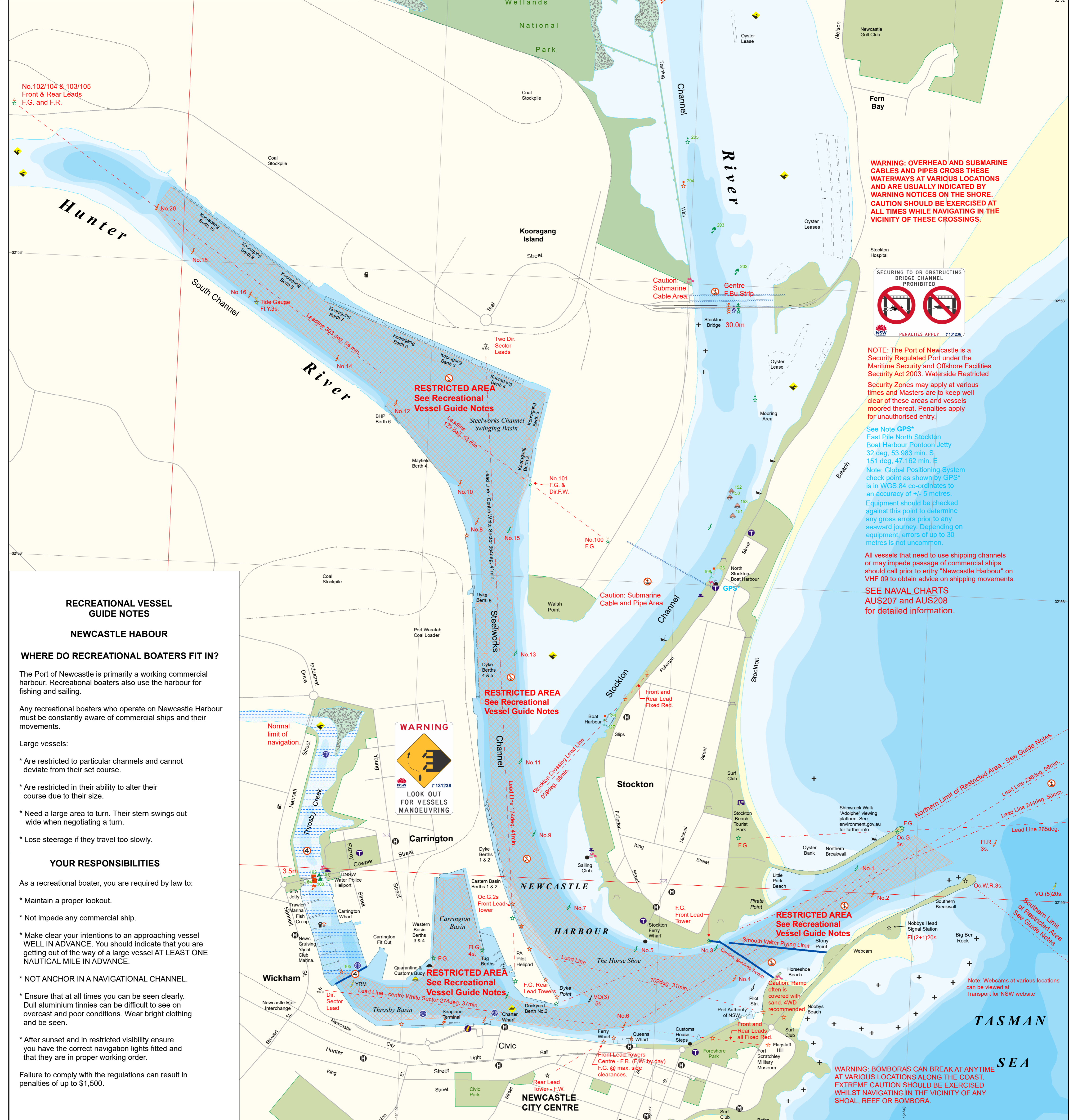
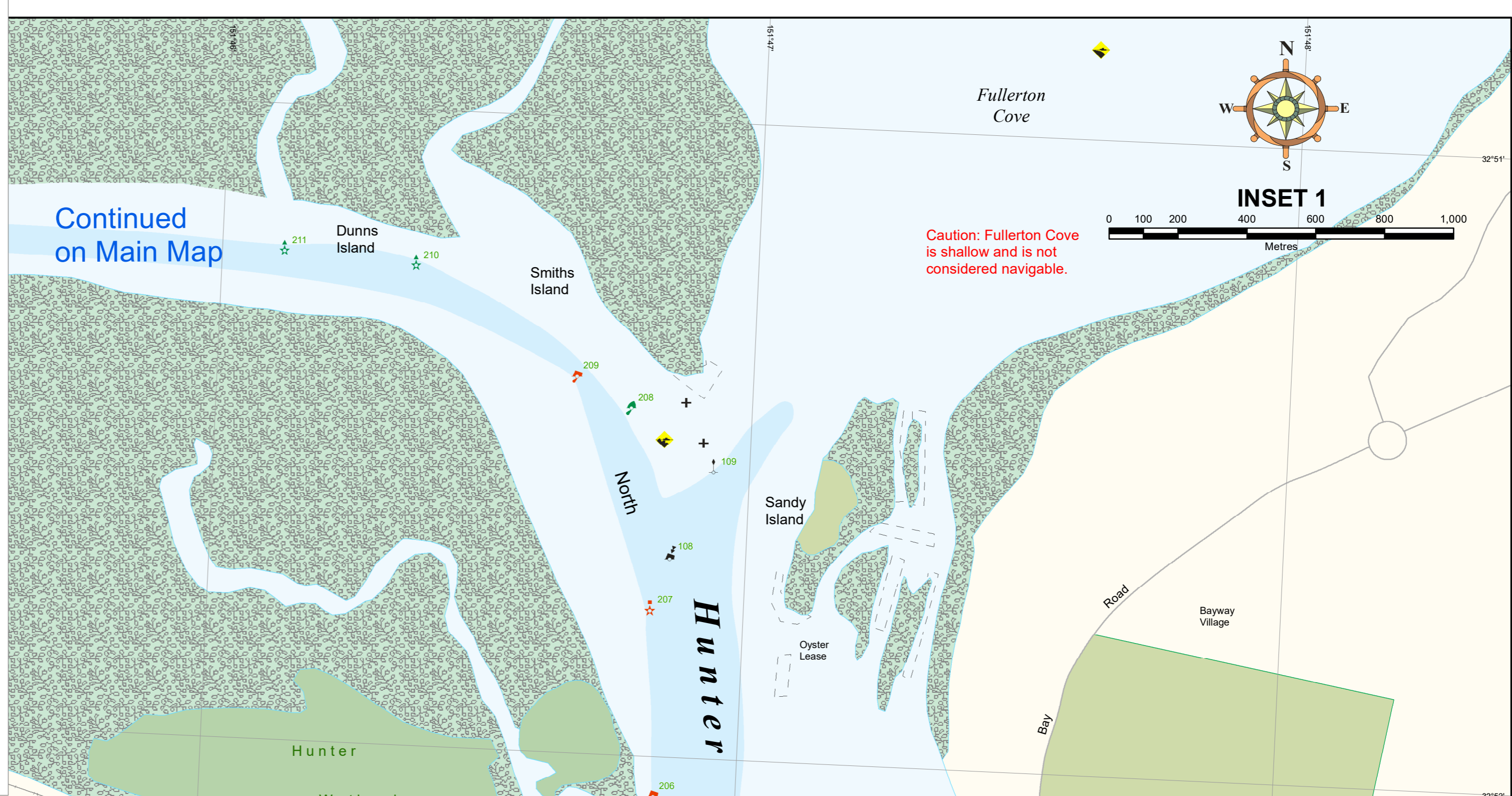


FRONT COVER PHOTO



WARNING: OVERHEAD AND SUBMARINE CABLES AND PIPES CROSS THESE WATERWAYS AT VARIOUS LOCATIONS AND ARE USUALLY INDICATED BY WARNING NOTICES ON THE SHORE. CAUTION SHOULD BE EXERCISED AT ALL TIMES WHILE NAVIGATING IN THE VICINITY OF THESE CROSSINGS.



NOTE: The Port of Newcastle is a Security Regulated Port under the Maritime Security and Offshore Facilities Security Act 2003. Waterside Restricted Security Zones may apply at various times and Masters are to keep well clear of these areas and vessels moored thereat. Penalties apply for unauthorised entry.

See Note GPS*
East Pile North Stockton Boat Harbour Pontoon Jetty 32 deg, 53.983 min. S 151 deg, 47.162 min. E
Note: Global Positioning System check point as shown by GPS* is in WGS 84 co-ordinates to an accuracy of +/- 5 metres. Equipment should be checked against this point to determine any gross errors prior to any seaward journey. Depending on equipment, errors of up to 30 metres is not uncommon.

All vessels that need to use shipping channels or may impede passage of commercial ships should call prior to entry "Newcastle Harbour" on VHF 09 to obtain advice on shipping movements.

SEE NAVAL CHARTS AUS207 and AUS208 for detailed information.

**RECREATIONAL VESSEL GUIDE NOTES
NEWCASTLE HARBOUR**

WHERE DO RECREATIONAL BOATERS FIT IN?

The Port of Newcastle is primarily a working commercial harbour. Recreational boaters also use the harbour for fishing and sailing.

Any recreational boaters who operate on Newcastle Harbour must be constantly aware of commercial ships and their movements.

Large vessels:

- * Are restricted to particular channels and cannot deviate from their set course.
- * Are restricted in their ability to alter their course due to their size.
- * Need a large area to turn. Their stern swings out wide when negotiating a turn.
- * Lose steerage if they travel too slowly.

YOUR RESPONSIBILITIES

As a recreational boater, you are required by law to:

- * Maintain a proper lookout.
- * Not impede any commercial ship.
- * Make clear your intentions to an approaching vessel WELL IN ADVANCE. You should indicate that you are getting out of the way of a large vessel AT LEAST ONE NAUTICAL MILE IN ADVANCE.
- * NOT ANCHOR IN A NAVIGATIONAL CHANNEL.
- * Ensure that at all times you can be seen clearly. Dull aluminium tinnies can be difficult to see on overcast and poor conditions. Wear bright clothing and be seen.
- * After sunset and in restricted visibility ensure you have the correct navigation lights fitted and that they are in proper working order.

Failure to comply with the regulations can result in penalties of up to \$1,500.



WARNING: BOMBORAS CAN BREAK AT ANYTIME AT VARIOUS LOCATIONS ALONG THE COAST. EXTREME CAUTION SHOULD BE EXERCISED WHILST NAVIGATING IN THE VICINITY OF ANY SHOAL, REEF OR BOMBORA.