

MAP OF Tweed Heads Coastal Area - Map 1

Navigation Aids

- Light House
- Light Buoy
- Light Buoy
- Light Buoy
- Light Buoy
- Light Buoy

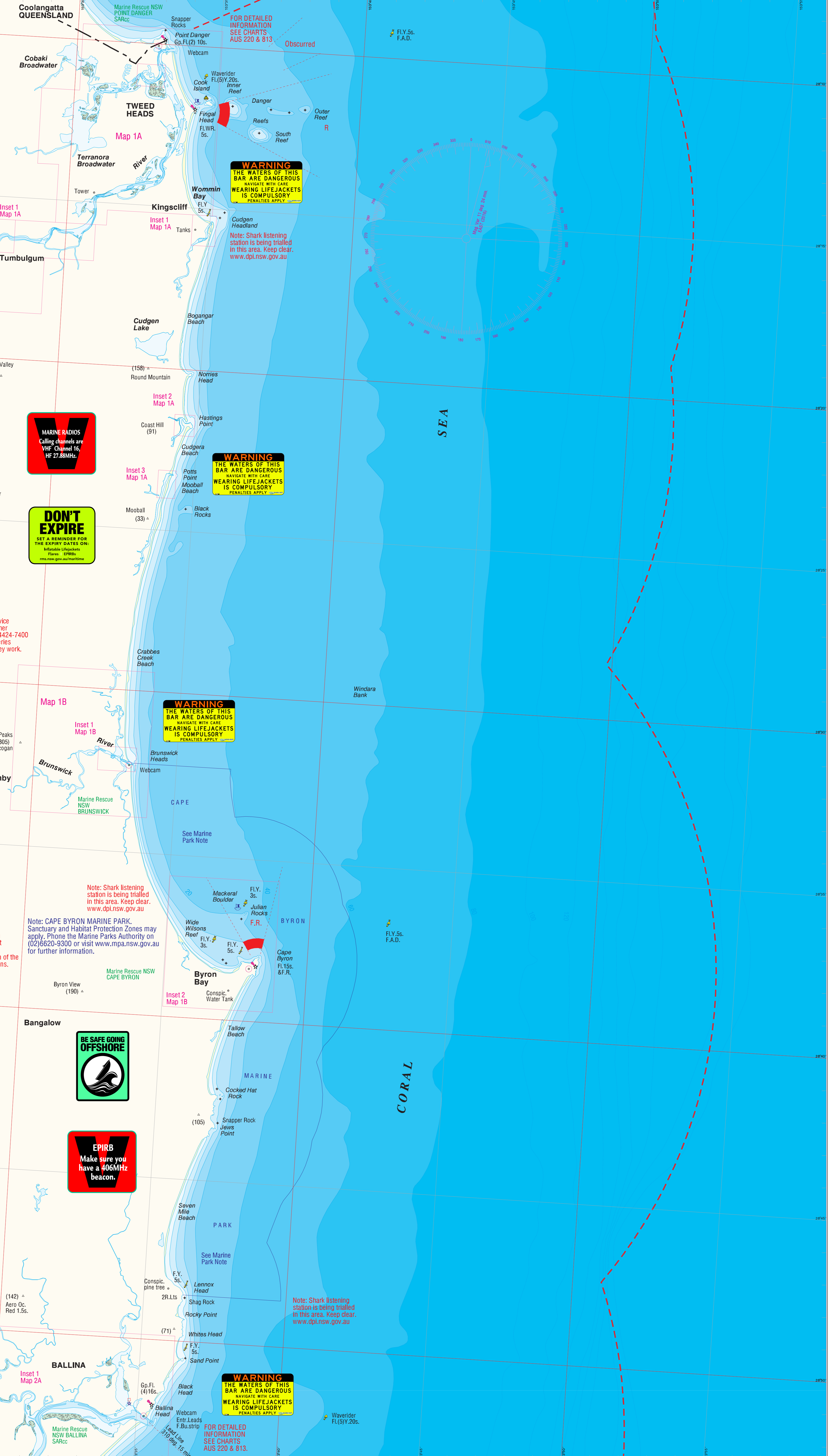
General Information

- Channel
- Post
- Structure
- Station
- Structure
- Structure
- Structure

NOTES:
 Depth contours are in metres. Heights shown in brackets are in metres above mean high water. Grid datum is the Geocentric Datum of Australia - 1994, which is approximately equivalent to WGS-84.

DISCLAIMER! This map is not intended to be used for navigational purposes and Roads and Maritime Services takes no responsibility for the accuracy of the content herein. Refer to Marine Safety Regulation note. Map Printed: November 2016. Copyright Roads and Maritime Services

Transport Roads & Maritime Services



WARNING
 THE WATERS OF THIS BAR ARE DANGEROUS
 NAVIGATE WITH CARE
 WEARING LIFE JACKETS IS COMPULSORY
 PENALTIES APPLY

WARNING
 THE WATERS OF THIS BAR ARE DANGEROUS
 NAVIGATE WITH CARE
 WEARING LIFE JACKETS IS COMPULSORY
 PENALTIES APPLY

WARNING
 THE WATERS OF THIS BAR ARE DANGEROUS
 NAVIGATE WITH CARE
 WEARING LIFE JACKETS IS COMPULSORY
 PENALTIES APPLY

WARNING
 THE WATERS OF THIS BAR ARE DANGEROUS
 NAVIGATE WITH CARE
 WEARING LIFE JACKETS IS COMPULSORY
 PENALTIES APPLY



YOU'RE THE SKIPPER YOU'RE RESPONSIBLE!



Note: Webcams are being trialled at various locations along the NSW coast and full information and locations can be found at our website www.rms.nsw.gov.au

F.A.D. Note: Fish Aggregation Device generally in position during summer months. Phone Fisheries on (02)4424-7400 or visit www.dpi.nsw.gov.au/fisheries for further information on how they work. DO NOT TIE UP TO THE DEVICE.

Caution: Look out for divers particularly at popular dive sites.

Note: Shark listening station is being trialled in this area. Keep clear. www.dpi.nsw.gov.au

Note: CAPE BYRON MARINE PARK. Sanctuary and Habitat Protection Zones may apply. Phone the Marine Parks Authority on (02)6620-9300 or visit www.mpa.nsw.gov.au for further information.

Note: It is compulsory to carry certain safety equipment including a lifejacket Level 100 plus for all on board, whilst navigating in the open sea. It is also compulsory that lifejackets be worn whilst crossing most entrance bars shown on this map. Further information on what you should carry can be found in the Roads and Maritime Services Boating Handbook available from all RMS Service Centres or by visiting www.rms.nsw.gov.au

USEFUL DISTANCE INFORMATION
 Tweed Heads - Ballina 77nm
 Ballina - Brunswick River 22nm
 Ballina - Yamba 33nm

IN CASE OF AN EMERGENCY
 Call the nearest Marine Rescue NSW Base on :-
 27 MHz Channels 88 & 86,
 VHF Channels 16, 67 & 73 or
 HF Channels 2182 & 2524 KHz.
 Frequent users are encouraged to join the Marine Radio Safety Service. Details at marinerescuensw.com.au
 Remember to Log on and Log off. It serves as a useful Radio Check.