

Map of Tuggerah, Budgewoi and Munmorah Lakes Area

0 300 600 1,200 1,800 2,400 3,000
Metres

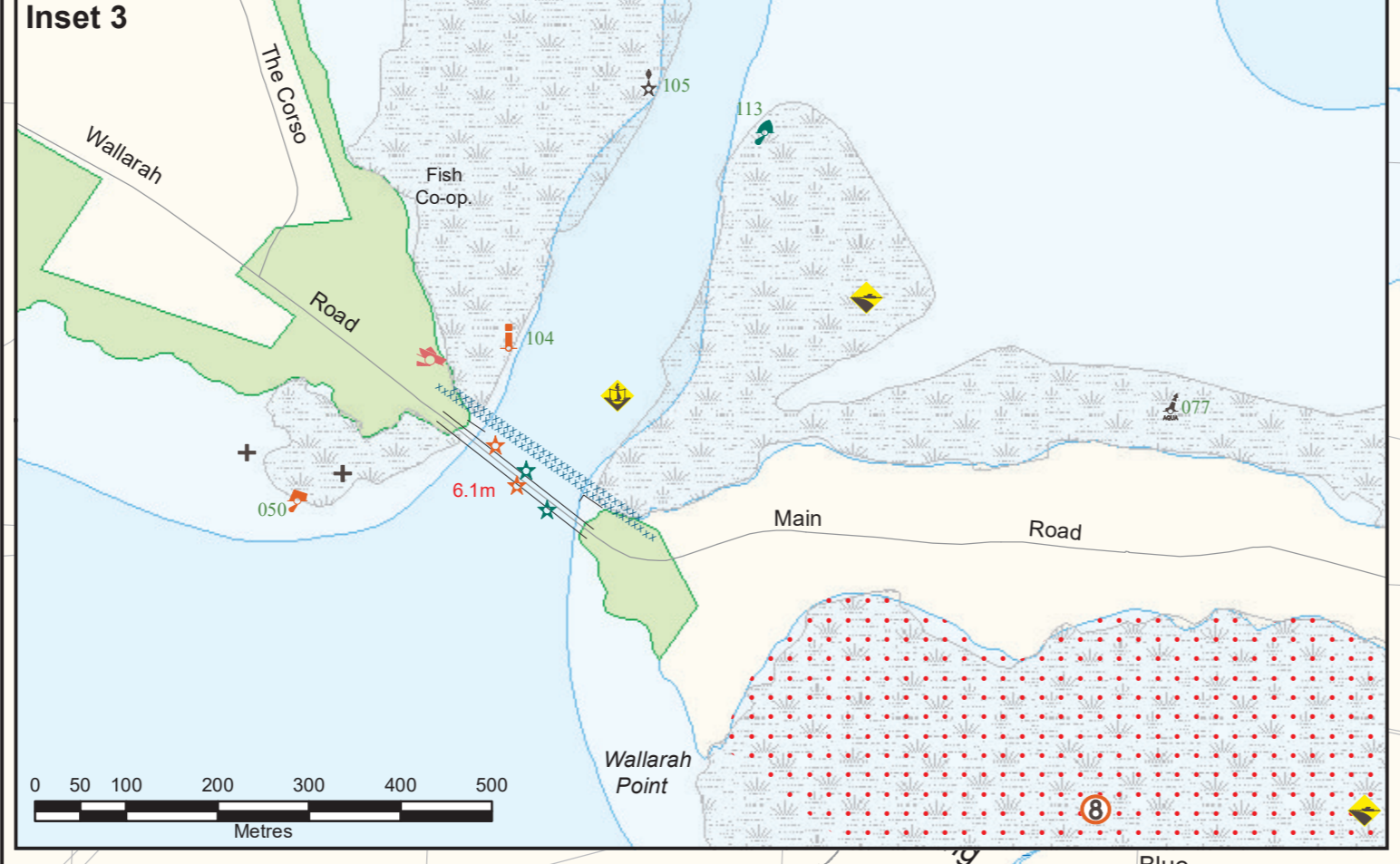
Line Symbols
 --- Cable Crossing
 --- Rockledge
 --- Restricted Waters
 --- 4 Knots Zone
 --- 8 Knots Zone
 --- Towing of Persons Prohibited
 --- Restricted Activities and Cautions
 --- Dangerous Area Breaks at Times
 --- Eight Knot Speed Limit Area
 --- Four Knot Speed Limit Area
 --- No Anchoring - Submarine Cable
 --- No / Minimise Wash Zone
 --- Caution Dive Site
 --- Caution Shallow Water
 --- Caution Submerged Rocks
 --- Warning Overhead Power Cables

Boating Facilities
 --- Formed Surface Launching Ramp
 --- Unformed or Hand Launching Area
 --- Marina, Boatshed or Boat Hire
 --- Blue Beehive Emerg. Police
 --- General Information
 --- Caravan - Park
 --- Fishing Platform
 --- Fuel Available
 --- Hospital
 --- Medical Evacuation Area
 --- Plonk Ground
 --- Transmitting Tower
 --- Washdown or Fish Cleaning
 --- Aids to Navigation
 --- Lit East Cardinal - Can Buoy
 --- Lit East - Aqua Buoy
 --- Lit Port - Aqua Buoy
 --- Lit Port - Beacon with Top Mark
 --- Lit Port - Buoy
 --- Lit Special Mark - Can Buoy
 --- Lit Starboard - Aqua Buoy

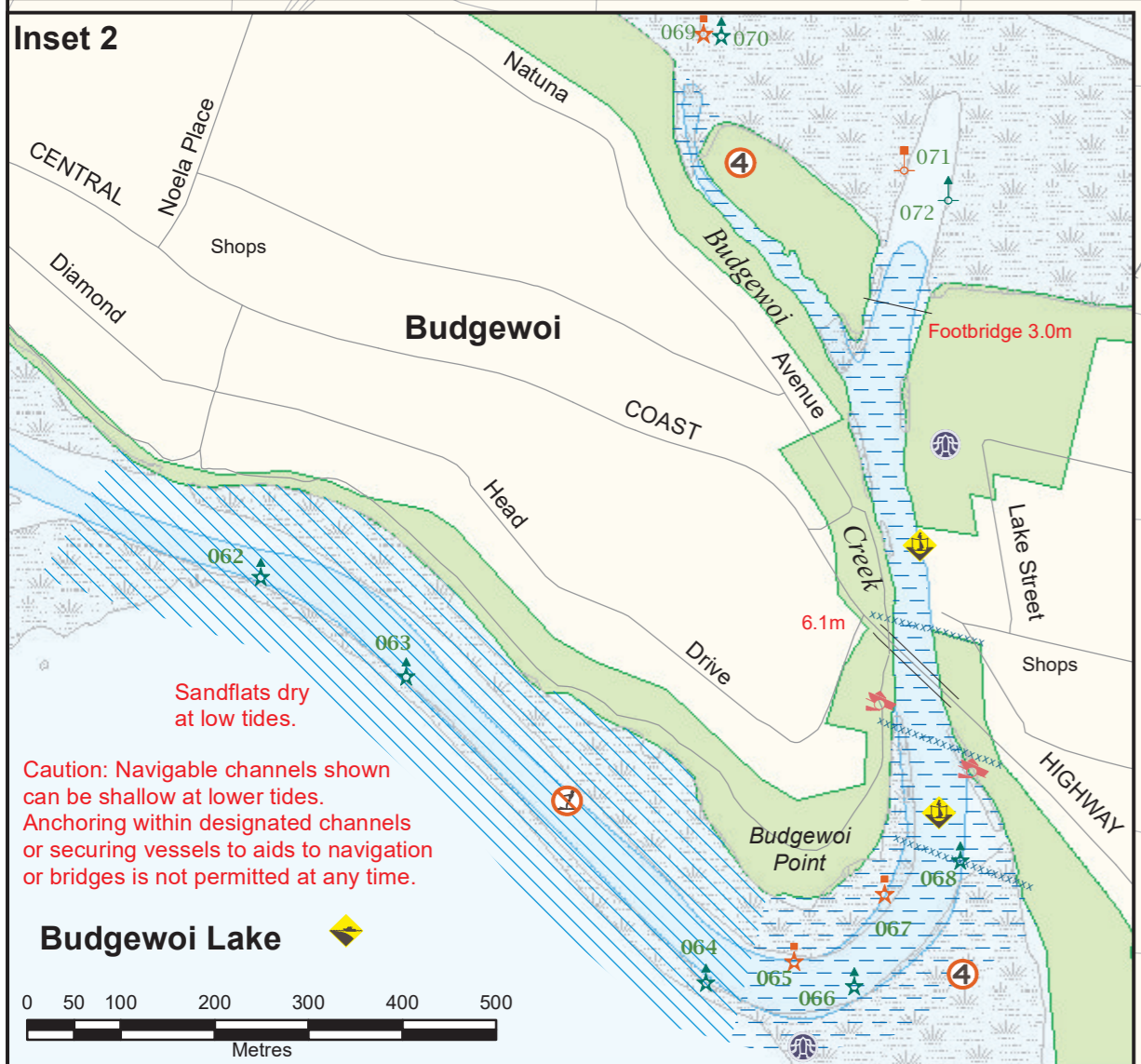
Navigation Aids
 --- Lt Starboard - Beacon with Top Mark
 --- Lt Starboard - Buoy
 --- Lt South Cardinal - Can Buoy
 --- Lt East - Cardinal beacon
 --- Lt Port - Beacon
 --- Lt Starboard - Beacon
 --- Lt West Cardinal - Beacon
 --- North Cardinal - Aqua Buoy
 --- Port - Aqua Buoy
 --- Port Pile - Beacon with Top Mark
 --- Starboard Pile - Beacon
 --- South Cardinal - Aqua Buoy
 --- Special Mark - Aqua Buoy
 --- Starboard Buoy
 --- Starboard Pile - Beacon
 --- Starboard Pile - Beacon with Top Mark
 --- Yellow Light - Beacon

NSW GOVERNMENT
 QR code for Boating Safety Information
 Water depth in metres

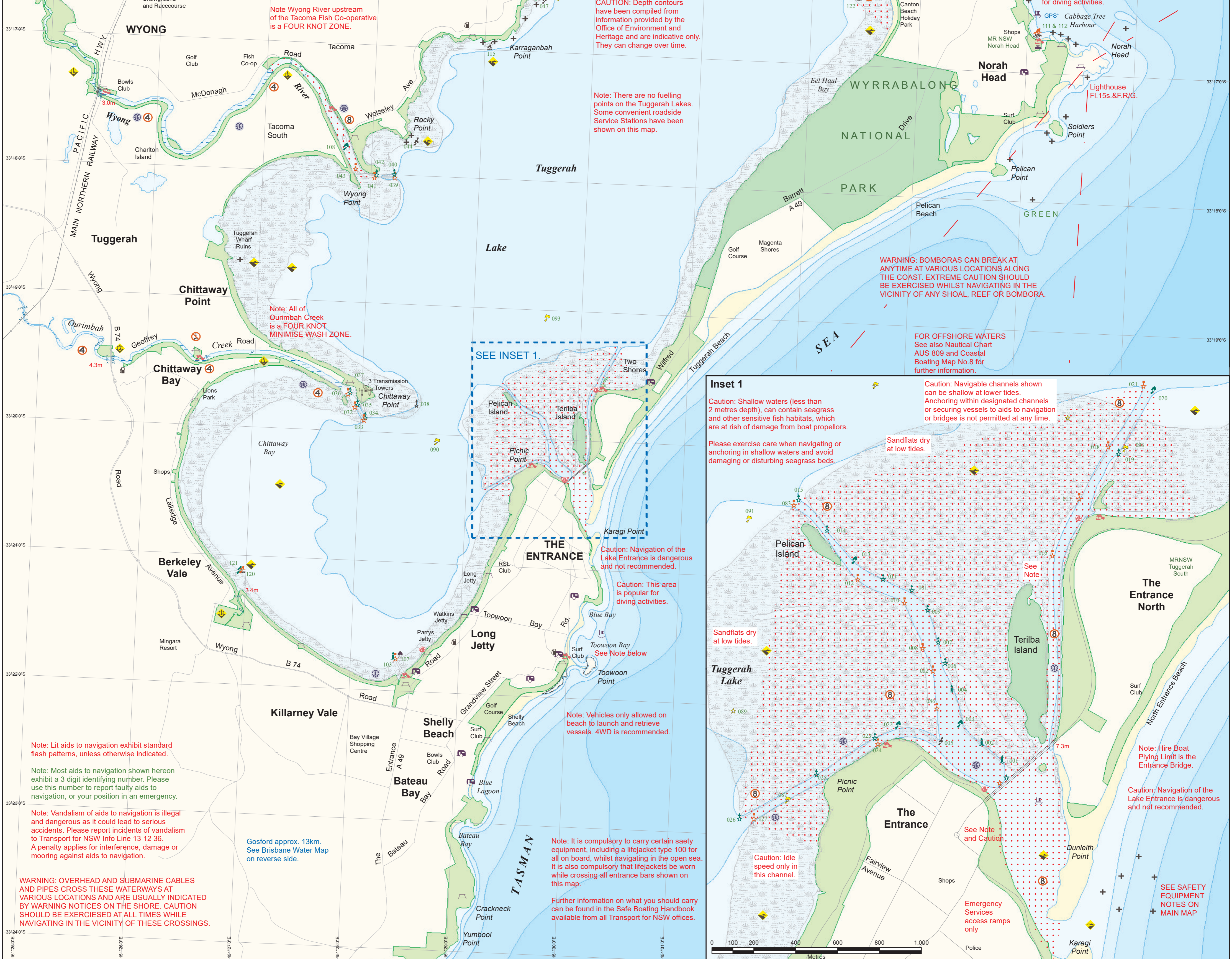
Disclaimer - This map is not intended to be used for navigational purposes and Transport for NSW takes no responsibility for the accuracy of the content herein.
 Map produced on the Geocentric Datum of Australia 2020 (GDA2020)
 Map Printed: December 2023. Copyright Transport for NSW.



NOTE:
 Depth ranges have been compiled over time from various sources. They are indicative only and should not be relied upon for navigation.
 Most aids to navigation and courtesy & emergency moorings are marked with a 3-digit asset identifier. Please use this number to report faults or your position in an emergency.
 Lit or unit yacht rounding marks (YRM) may exist in this waterway. Symbols as shown on the map do not necessarily reflect actual shapes, colours and/or location of the marks used by individual yacht clubs.
 The extents of seagrass beds that may appear on the map have been sourced from NSW Department of Primary Industries (Fisheries).



Budgewoi Lake
 Sandflats dry at low tides.
 Caution: Navigable channels shown can be shallow at lower tides. Anchoring within designated channels or securing vessels to aids to navigation or bridges is not permitted at any time.



Note: General information such as caravan parks, hotels, motels, picnic grounds and public toilets etc. are indicated as a guide only. Not all can be shown in some areas.

CAUTION: Depth contours have been compiled from information provided by the Office of Environment and Heritage and are indicative only. They can change over time.

Note: There are no fuelling points on the Tuggerah Lakes. Some convenient roadside Service Stations have been shown on this map.

WARNING: BOMBORAS CAN BREAK AT ANYTIME AT VARIOUS LOCATIONS ALONG THE COAST. EXTREME CAUTION SHOULD BE EXERCISED WHILST NAVIGATING IN THE VICINITY OF ANY SHOAL, REEF OR BOMBORA.

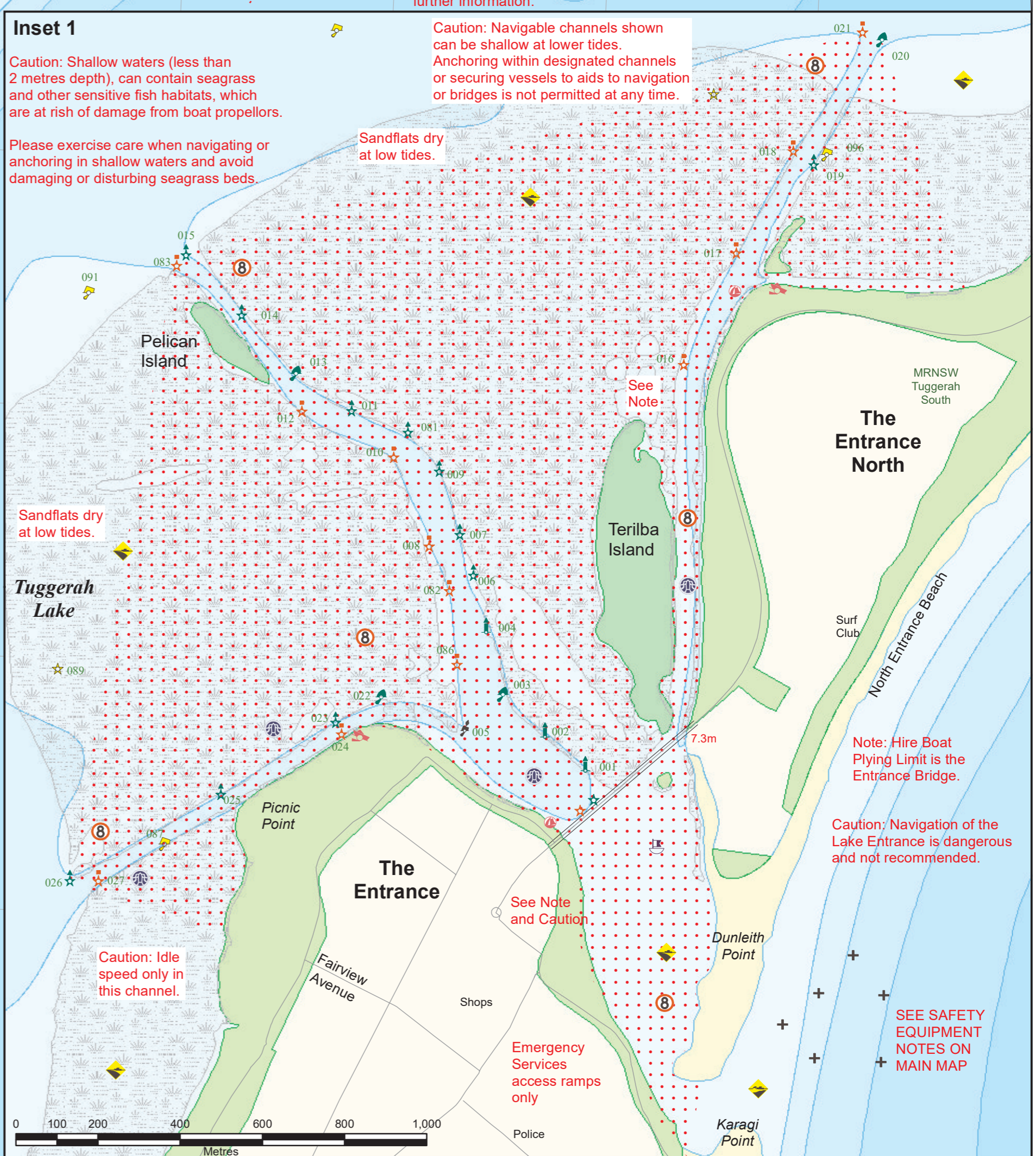
FOR OFFSHORE WATERS
 See also Nautical Chart AUS 809 and Coastal Boating Map No. 8 for further information.

Note: Global Positioning System check point as shown by GPS* is in WGS84 co-ordinates to an accuracy of +/- 5 metres.
 Equipment should be checked against this point to determine any gross errors prior to any seaward journey. Depending on equipment, errors of up to 30 metres is not uncommon.
 See Note: GPS* Top (south west) corner ribbed concrete ramp adjacent information signs. 33 deg. 16.751 min S 151 deg. 34.112 min E.

SEE SAFETY EQUIPMENT NOTES
 Caution: This area is popular for diving activities.

GPS* Cabbage Tree 111 & 112 Harbour 33 deg. 16.751 min S 151 deg. 34.112 min E
 Lighthouse Fl. 15s. & FR.G.

SEE INSET 1



Caution: Shallow waters (less than 2 metres depth), can contain seagrass and other sensitive fish habitats, which are at risk of damage from boat propellers.
 Please exercise care when navigating or anchoring in shallow waters and avoid damaging or disturbing seagrass beds.

Caution: Navigable channels shown can be shallow at lower tides. Anchoring within designated channels or securing vessels to aids to navigation or bridges is not permitted at any time.

Caution: Navigation of the Lake Entrance is dangerous and not recommended.

Caution: This area is popular for diving activities.

Note: Vehicles only allowed on beach to launch and retrieve vessels. 4WD is recommended.

Note: It is compulsory to carry certain safety equipment, including a lifejacket type 100 for all on board, whilst navigating in the open sea. It is also compulsory that lifejackets be worn while crossing all entrance bars shown on this map.

Further information on what you should carry can be found in the Safe Boating Handbook available from all Transport for NSW offices.

Note: Hire Boat Plying Limit is the Entrance Bridge.
 Caution: Navigation of the Lake Entrance is dangerous and not recommended.

SEE SAFETY EQUIPMENT NOTES ON MAIN MAP

Note: Lit aids to navigation exhibit standard flash patterns, unless otherwise indicated.
 Note: Most aids to navigation shown hereon exhibit a 3 digit identifying number. Please use this number to report faulty aids to navigation, or your position in an emergency.
 Note: Vandalism of aids to navigation is illegal and dangerous as it could lead to serious accidents. Please report incidents of vandalism to Transport for NSW Info Line 13 12 36. A penalty applies for interference, damage or mooring against aids to navigation.
 WARNING: OVERHEAD AND SUBMARINE CABLES AND PIPES CROSS THESE WATERWAYS AT VARIOUS LOCATIONS AND ARE USUALLY INDICATED BY WARNING NOTICES ON THE SHORE. CAUTION SHOULD BE EXERCISED AT ALL TIMES WHILE NAVIGATING IN THE VICINITY OF THESE CROSSINGS.