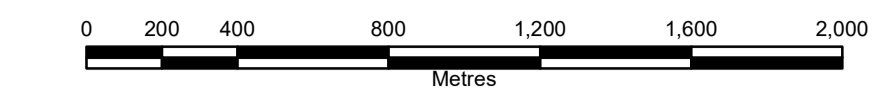
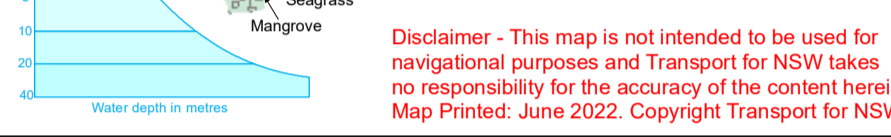


Map of Lower Hawkesbury River, Berowra, Patonga and Lower Mooney Mooney Creeks

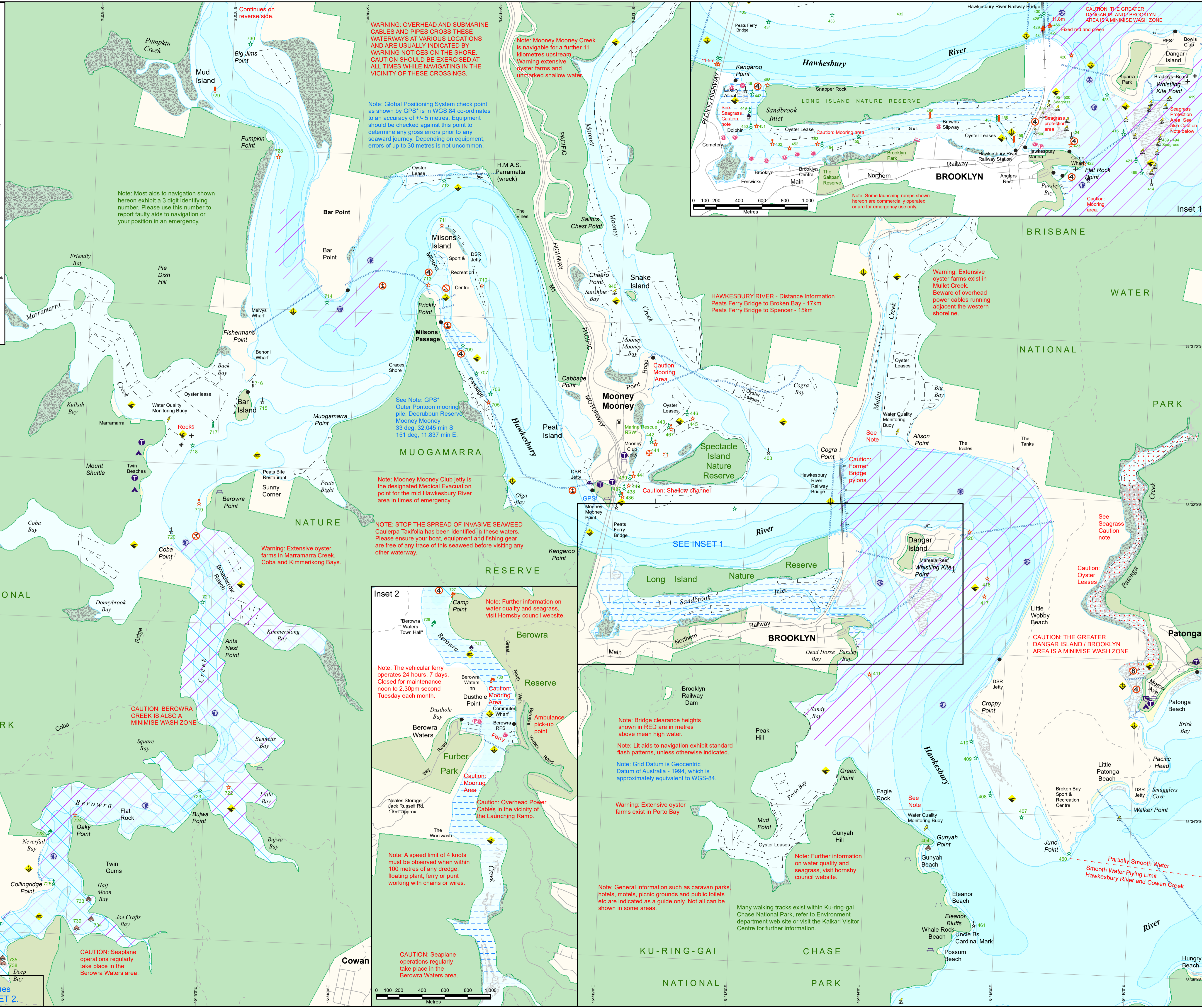


- Line Symbols**
 - Cable Crossing
 - Structure
 - Oyster Lease
- Restricted Waters**
 - 4 Knots Zone
 - Towing of Persons Prohibited
 - No / Minimise Wash Zone
- Restricted Activities and Cautions**
 - Dangerous Area Breaks at Times
 - Visible Wreck
 - Direction Of Buoyage
 - Eight Knot Speed Limit Area
 - Four Knot Speed Limit Area
 - No Anchoring - Submarine Cable
 - Towing of Persons Prohibited
 - No / Minimise Wash Zone
 - Caution Shallow Water
 - Caution Submerged Rocks
 - Known Seaplane Operating Area
 - Warning Overhead Power Cables
- Boating Facilities**
 - Formed Surface Launching Ramp
 - Uniformed or Hand Launching Area
 - Marina, Boatshed or Boat Hire
 - Blue Beehive Emerg Police
 - Pink Beehive Public Mooring
 - Private Vessel - Pumpout Facility
 - Public Vessel - Pumpout Facility
 - Public Wharf, Jetty or Landing
 - General Information
 - Camping - Ground
 - Fuel Available
 - Medical Evacuation Area
 - Picnic Ground
 - Public Toilet
 - Washdown or Fish Cleaning
- Aids to Navigation**
 - East Cardinal - Pile Beacon
 - Li Port - Beacon with Top Mark
 - Li Port Buoy
 - Li Special Mark - Can Buoy
 - Li Starboard - Beacon with Top Mark
 - Li Starboard - Buoy
 - Li East - Cardinal Beacon
 - Li North - Cardinal Beacon
 - Li Port - Beacon
 - Li South - Cardinal Beacon
 - Li Special Mark - Beacon
 - Li Starboard - Beacon
 - Li West Cardinal - Beacon
 - Port Pile - Beacon
 - Port Pile - Beacon with Top Mark
 - South Cardinal - Pile Beacon
 - Special Mark - Aqua Buoy
 - Special Pipe - Beacon
 - Starboard Pile - Beacon with Top Mark



NOTE:
Depth ranges have been compiled over time from various sources. They are indicative only and should not be relied upon for navigation.
Most aids to navigation and courtesy & emergency moorings are marked with a 3-digit asset identifier. Please use this number to report faults or your position in an emergency.
Lit or unlit yacht rounding marks (YRM) may exist in this waterway. Symbols as shown on the map do not necessarily reflect actual shapes, colours and/or location of the marks used by individual yacht clubs.
The extents of seagrass beds that may appear on the map have been sourced from NSW Department of Primary Industries (Fisheries).

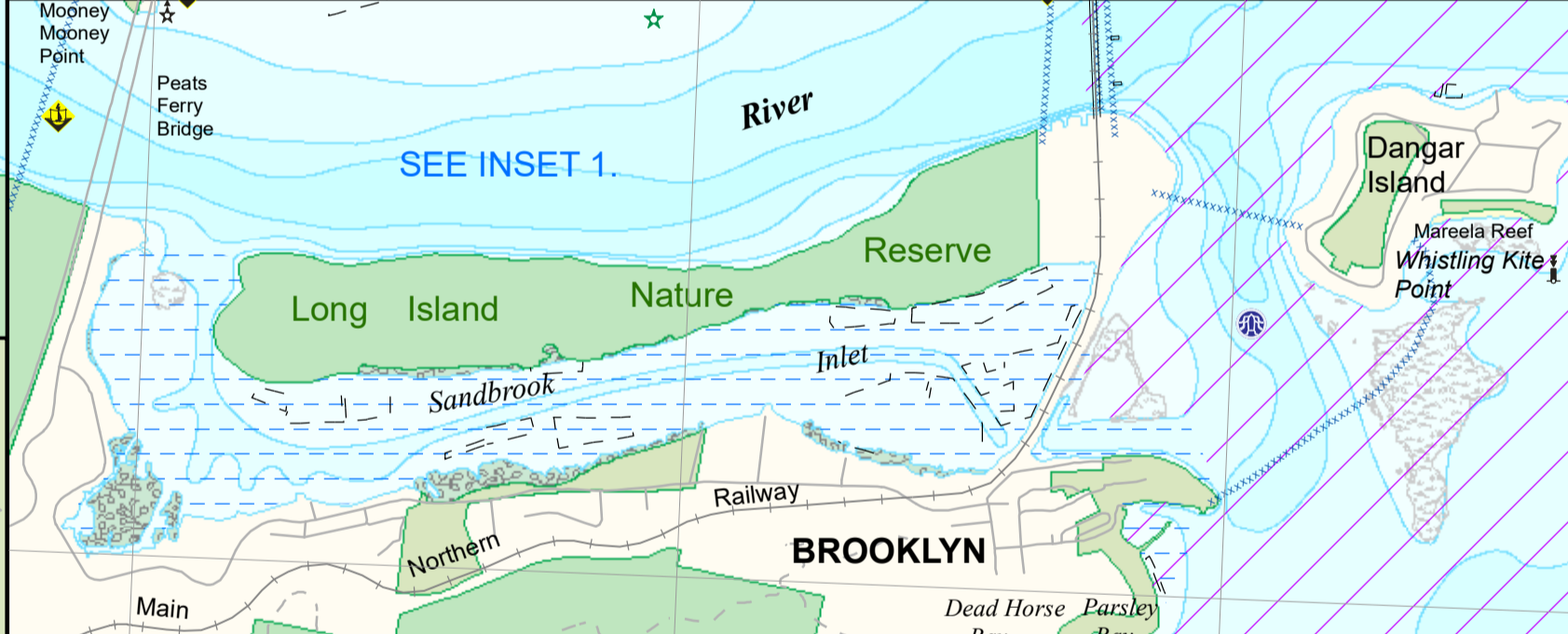
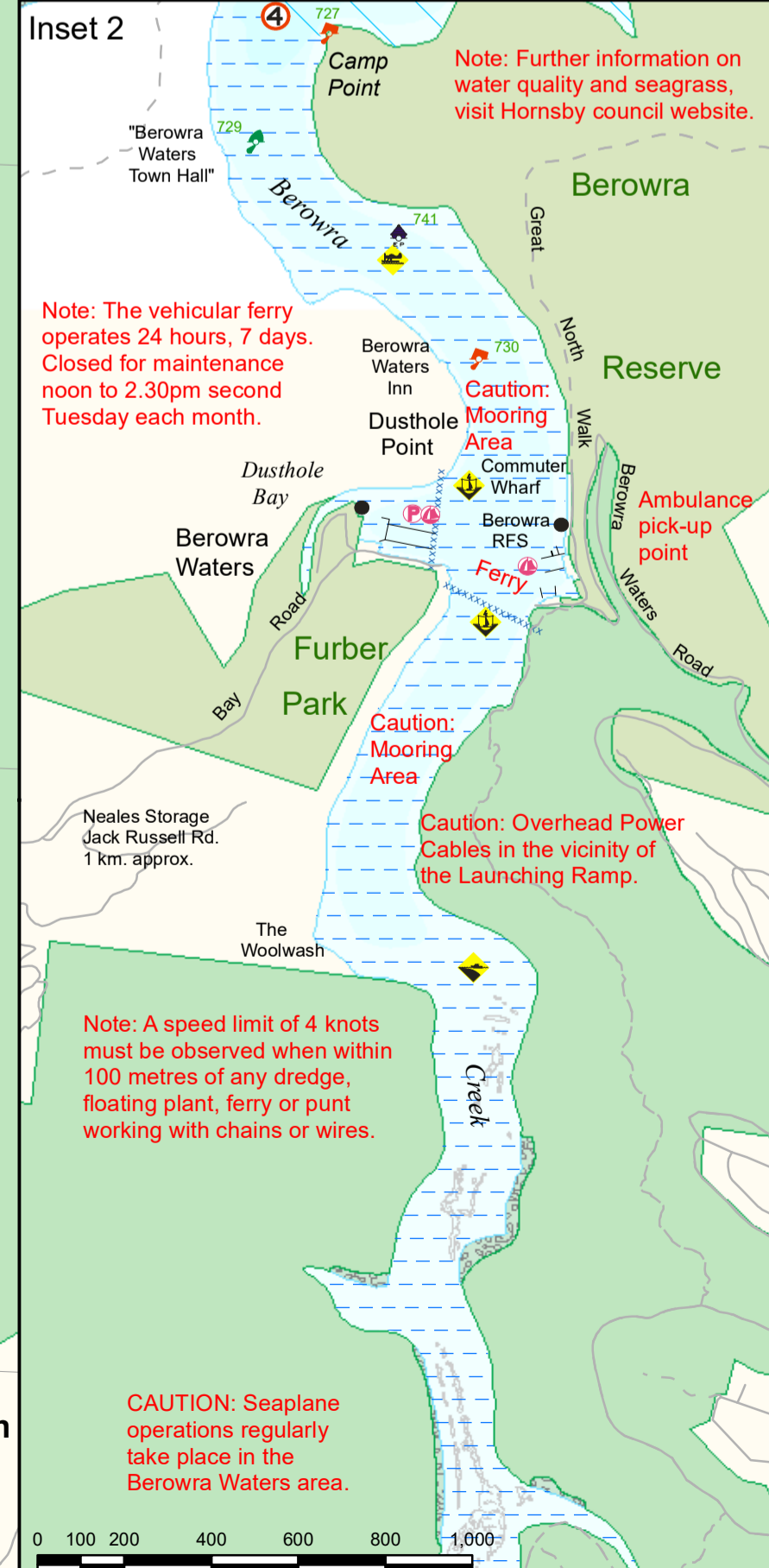
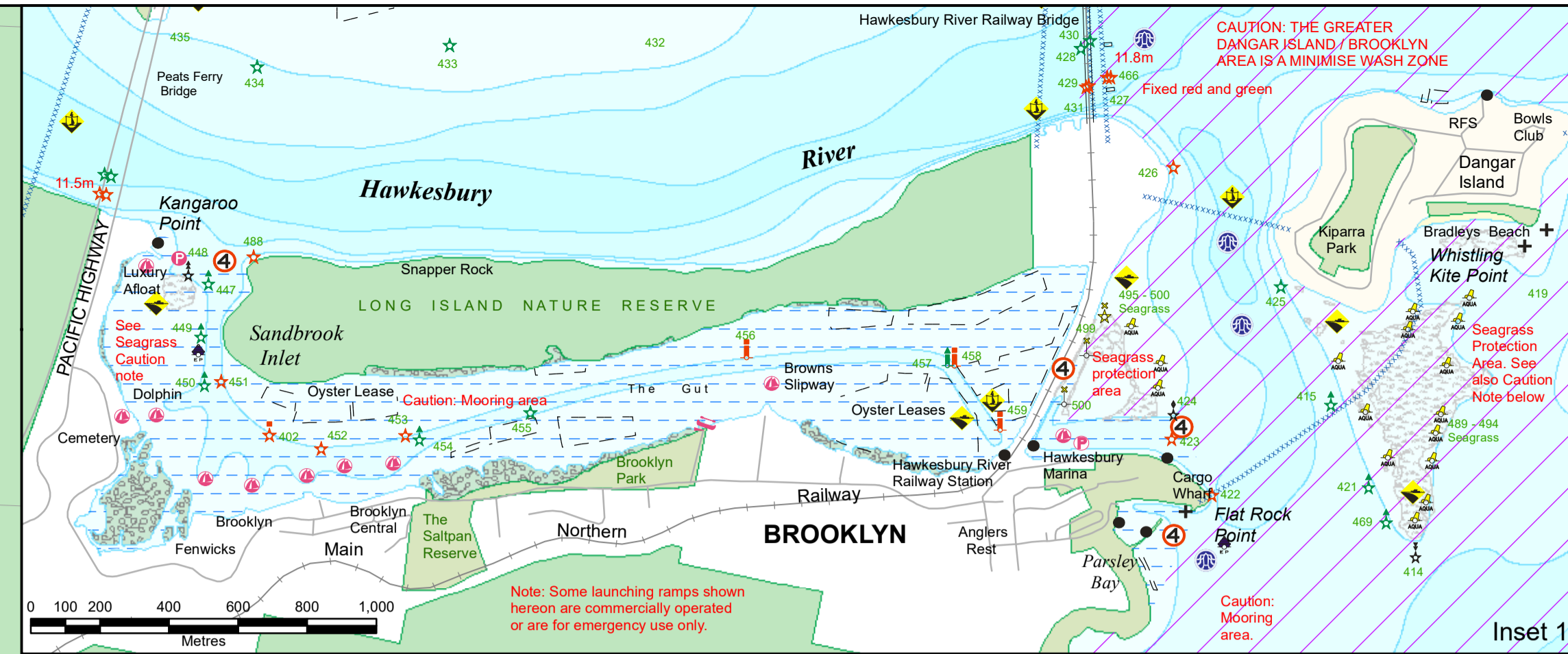
THE NATIONAL PARKS AND WILDLIFE CODE
 * Guard against all risks of fire.
 * Avoid damage to wildflower, vegetation, earth and rock formations.
 * Place all rubbish in containers provided.
 * Leave firearms and pets outside your park.
 * Drive carefully and observe speed limits.



WARNING: OVERHEAD AND SUBMARINE CABLES AND PIPES CROSS THESE WATERWAYS AT VARIOUS LOCATIONS AND ARE USUALLY INDICATED BY WARNING NOTICES ON THE SHORE. CAUTION SHOULD BE EXERCISED AT ALL TIMES WHILE NAVIGATING IN THE VICINITY OF THESE CROSSINGS.

Note: Mooney Mooney Creek is navigable for a further 11 kilometres upstream. Warning extensive oyster farms and uncharted shallow water.

Note: Global Positioning System check point as shown by GPS* is in WGS.84 co-ordinates to an accuracy of +/- 5 metres. Equipment should be checked against this point to determine any gross errors prior to any seaward journey. Depending on equipment, errors of up to 30 metres is not uncommon.



Warning: Extensive oyster farms exist in Mullet Creek. Beware of overhead power cables running adjacent the western shoreline.

Note: Mooney Mooney Club Jetty is the designated Medical Evacuation point for the mid Hawkesbury River area in times of emergency.

NOTE: STOP THE SPREAD OF INVASIVE SEAWEED *Caulerpa Taxifolia* has been identified in these waters. Please ensure your boat, equipment and fishing gear are free of any trace of this seaweed before visiting any other waterway.

Note: Most aids to navigation shown hereon exhibit a 3 digit identifying number. Please use this number to report faulty aids to navigation or your position in an emergency.

HAWKESBURY RIVER - Distance Information
 Peats Ferry Bridge to Broken Bay - 17km
 Peats Ferry Bridge to Spencer - 15km

CAUTION: THE GREATER DANGAR ISLAND / BROOKLYN AREA IS A MINIMISE WASH ZONE

CAUTION: BEROWRA CREEK IS ALSO A MINIMISE WASH ZONE

CAUTION: Beware of overhead power cables running adjacent to the western shoreline.

CAUTION: Seaplane operations regularly take place in the Berowra Waters area.

Note: A speed limit of 4 knots must be observed when within 100 metres of any dredge, floating plant, ferry or punt working with chains or wires.

CAUTION: Seaplane operations regularly take place in the Berowra Waters area.

Note: Bridge clearance heights shown in RED are in metres above mean high water.
 Note: Lit aids to navigation exhibit standard flash patterns, unless otherwise indicated.
 Note: Grid Datum is Geocentric Datum of Australia - 1994, which is approximately equivalent to WGS-84.

Warning: Extensive oyster farms exist in Porto Bay.

Note: General information such as caravan parks, hotels, motels, picnic grounds and public toilets etc. are indicated as a guide only. Not all can be shown in some areas.

Note: Further information on water quality and seagrass, visit hornsby council website.

Many walking tracks exist within Ku-ring-gai Chase National Park, refer to Environment department web site or visit the Kalkari Visitor Centre for further information.

Partially Smooth Water
 Smooth Water Plying Limit
 Hawkesbury River and Cowan Creek