

STEER CLEAR

SAFETY NOTICE TO ALL BOAT OPERATORS

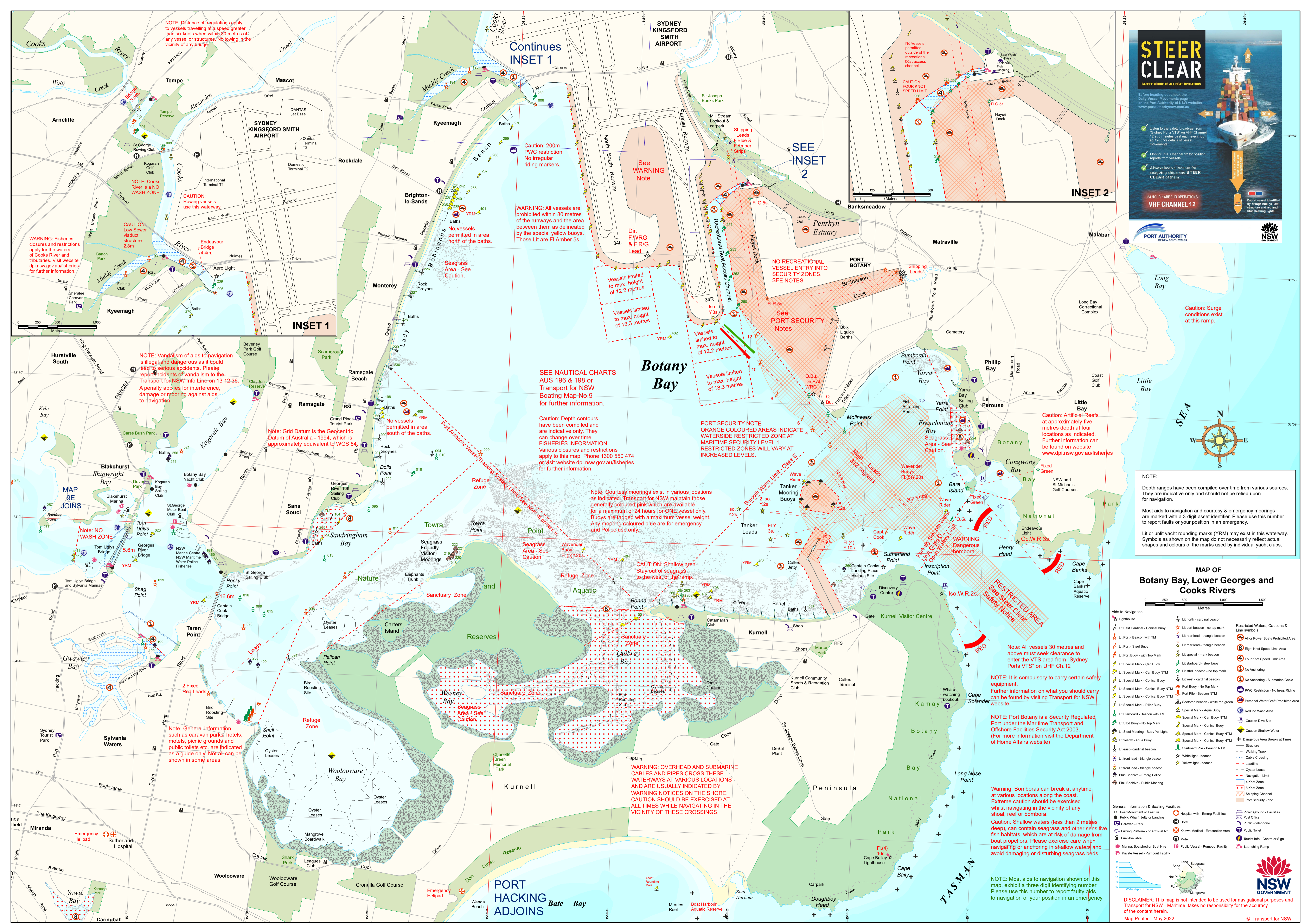
Before heading out check the Daily Vessel Movement page on the Port Authority of NSW website: www.portauthority.nsw.gov.au

- Listen to the safety broadcast from Sydney Ports VTS on VHF Channel 12 at 5 minutes past each hour or 200 by status of vessel movements
- Monitor VHF Channel 12 for position reports from vessels
- Always keep a lookout for incoming ships and STEER CLEAR of them

24 HOUR HARBOUR OPERATIONS
VHF CHANNEL 12

Escort vessel identified by orange hull, yellow superstructure and red and blue flashing lights

PORT AUTHORITY OF NEW SOUTH WALES
NSW GOVERNMENT



NOTE: Distance off regulations apply to vessels travelling at a speed greater than six knots when within 80 metres of any vessel or structure. No towing in the vicinity of any bridge.

NOTE: Fisheries closures and restrictions apply for the waters of Cooks River and tributaries. Visit website dpi.nsw.gov.au/fisheries for further information.

NOTE: Cooks River is a NO WASH ZONE

CAUTION: Rowing vessels use this waterway

CAUTION: Low Sewer viaduct structure 2.8m

CAUTION: Endeavour Bridge 4.4m

WARNING: Fisheries closures and restrictions apply for the waters of Cooks River and tributaries. Visit website dpi.nsw.gov.au/fisheries for further information.

NOTE: Vandals of aids to navigation is illegal and dangerous as it could lead to serious accidents. Please report incidents of vandalism to the Transport for NSW Info Line on 13 12 36. A penalty applies for interference, damage or mooring against aids to navigation.

NOTE: Grid Datum is the Geocentric Datum of Australia - 1994, which is approximately equivalent to WGS 84.

NOTE: Courtesy moorings exist in various locations as indicated. Transport for NSW maintain those generally coloured pink which are available for a maximum of 24 hours for ONE vessel only. Buoys are lagged with a maximum vessel weight. Any mooring coloured blue are for emergency and Police use only.

NOTE: General information such as caravan parks, hotels, motels, picnic grounds and public toilets etc. are indicated as a guide only. Not all can be shown in some areas.

WARNING: OVERHEAD AND SUBMARINE CABLES AND PIPES CROSS THESE WATERWAYS AT VARIOUS LOCATIONS AND ARE USUALLY INDICATED BY WARNING NOTICES ON THE SHORE. CAUTION SHOULD BE EXERCISED AT ALL TIMES WHILE NAVIGATING IN THE VICINITY OF THESE CROSSINGS.

NOTE: Depth ranges have been compiled over time from various sources. They are indicative only and should not be relied upon for navigation.

Most aids to navigation and courtesy & emergency moorings are marked with a 3-digit asset identifier. Please use this number to report faults or your position in an emergency.

Lit or unlit yacht rounding marks (YRM) may exist in this waterway. Symbols as shown on the map do not necessarily reflect actual shapes and colours of the marks used by individual yacht clubs.

MAP OF Botany Bay, Lower Georges and Cooks Rivers

Aids to Navigation		
	Lit north - cardinal beacon	Restricted Waters, Cautions & Line Symbols
	Lit East Cardinal - Conical Buoy	All or Power Bots Prohibited Area
	Lit Port - Beacon with TM	Eight Knot Speed Limit Area
	Lit Starboard - Beacon with TM	Four Knot Speed Limit Area
	Lit Special Buoy - Can Buoy	No Anchoring
	Lit Special Buoy - Can Buoy	No Anchoring - Submarine Cable
	Lit Special Buoy - Can Buoy	PWC Restriction - No Irreg. Riding
	Lit Special Buoy - Can Buoy	Personal Water Craft Prohibited Area
	Lit Special Buoy - Can Buoy	Reduce Wash Area
	Lit Special Buoy - Can Buoy	Caution Dive Site
	Lit Special Buoy - Can Buoy	Caution Shallow Water
	Lit Special Buoy - Can Buoy	Dangerous Area Breaks at Times
	Lit Special Buoy - Can Buoy	Structure
	Lit Special Buoy - Can Buoy	Walking Track
	Lit Special Buoy - Can Buoy	Cable Crossing
	Lit Special Buoy - Can Buoy	Leads
	Lit Special Buoy - Can Buoy	Oyster Lease
	Lit Special Buoy - Can Buoy	Navigation Limit
	Lit Special Buoy - Can Buoy	4 Knot Zone
	Lit Special Buoy - Can Buoy	8 Knot Zone
	Lit Special Buoy - Can Buoy	Shipping Channel
	Lit Special Buoy - Can Buoy	Port Security Zone

General Information & Boating Facilities

- Post Monument or Feature
- Public Wharf, Jetty or Landing
- Caravan - Park
- Fishing Platform - or Artificial R
- Fuel Available
- Marina, Boatshed or Boat Hire
- Private Vessel - Pumpout Facility
- Hospital - Emerg Facilities
- Known Medical - Evacuation Area
- Motel
- Public Vessel - Pumpout Facility
- Picnic Ground - Facilities
- Post Office
- Public - telephone
- Public Toilet
- Tourist Info - Centre or Sign
- Launching Ramp

NSW GOVERNMENT
DISCLAIMER: This map is not intended to be used for navigational purposes and Transport for NSW - Maritime takes no responsibility for the accuracy of the content herein.
Map Printed: May 2022