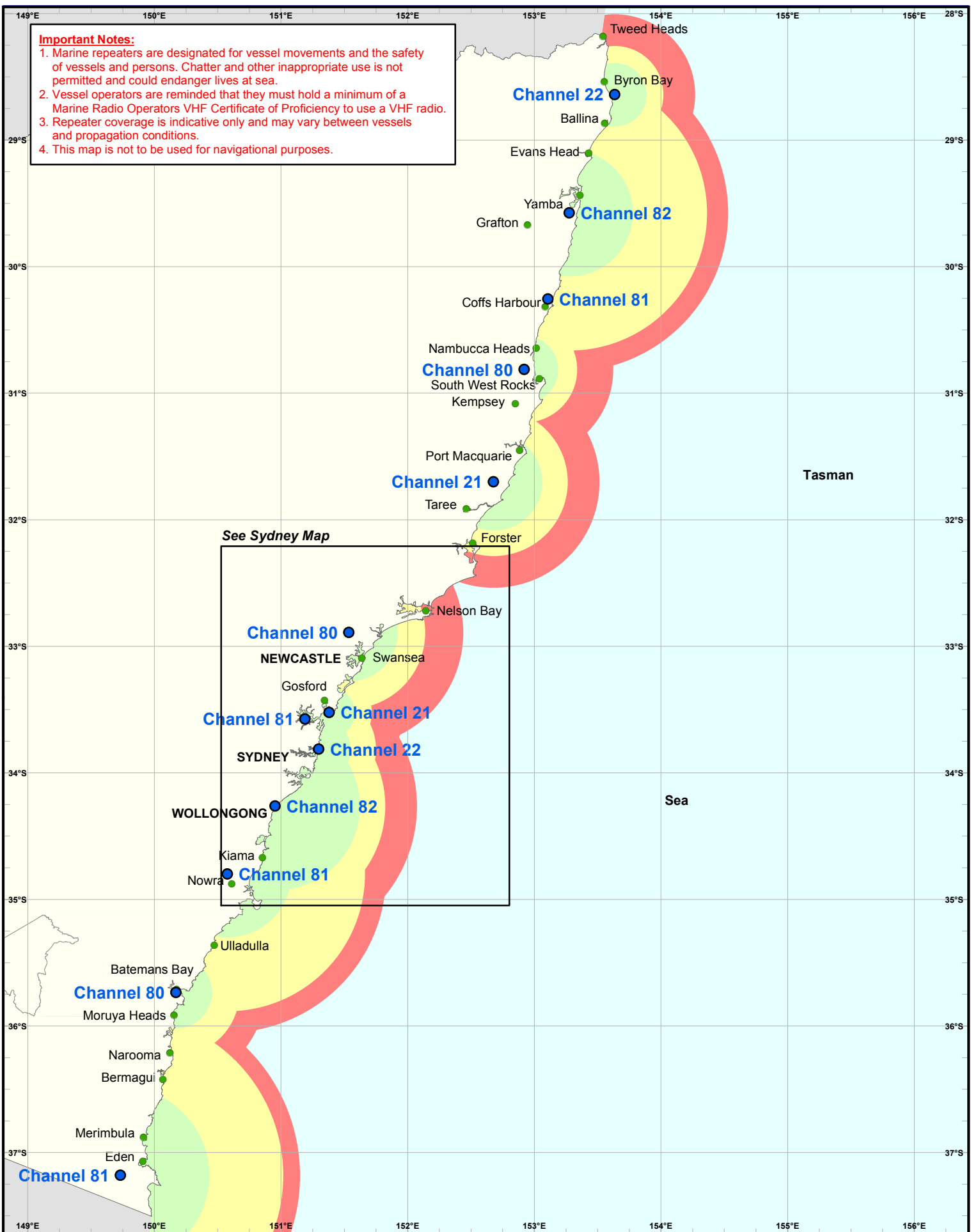
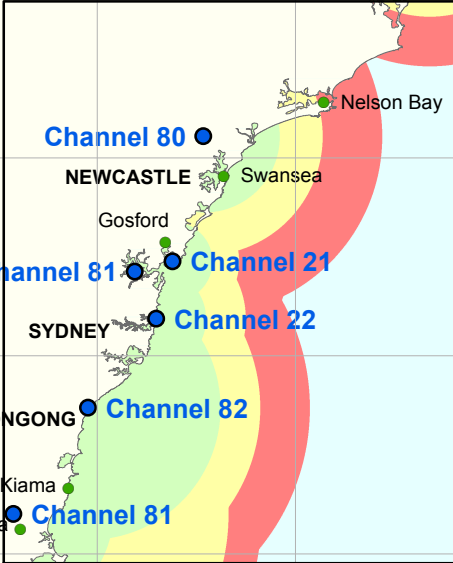


Important Notes:

1. Marine repeaters are designated for vessel movements and the safety of vessels and persons. Chatter and other inappropriate use is not permitted and could endanger lives at sea.
2. Vessel operators are reminded that they must hold a minimum of a Marine Radio Operators VHF Certificate of Proficiency to use a VHF radio.
3. Repeater coverage is indicative only and may vary between vessels and propagation conditions.
4. This map is not to be used for navigational purposes.



See Sydney Map



● Repeater Station	Signal (dBm)
● Town/City	● -67 to -71
	● -75 to -79
	● -83 to -91

Plan compiled from information held in the Domestic Property & Geospatial Services Branch. INFORMATION ON THIS PLAN IS SUBJECT TO COPYRIGHT.

Nautical Miles
0 10 20 40 60 80

Kilometres
0 40 80 120 160

Scale at A4 sheet 1:4,250,000

Marine VHF Repeater Regional Coverage

NSW GOVERNMENT | Transport Roads & Maritime Services

Date Produced: 22 December 2014