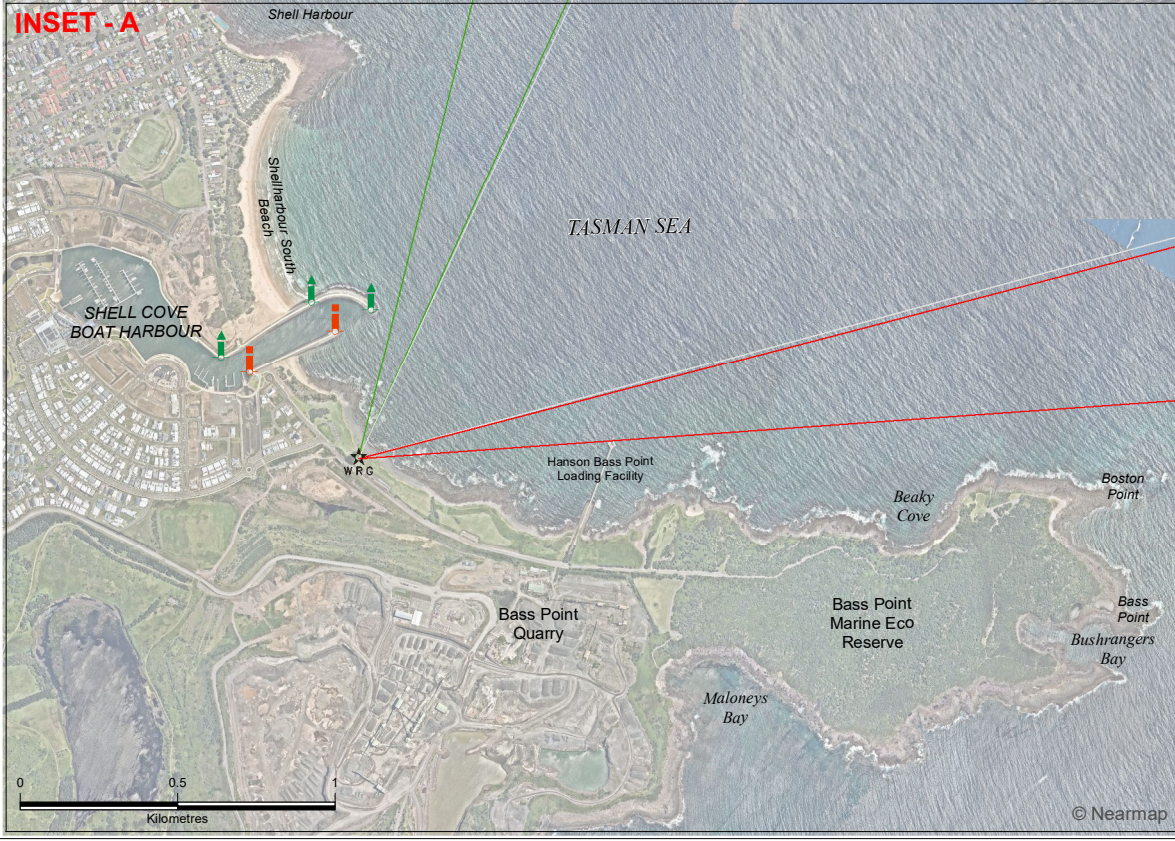


TASMAN SEA



NOTE:
 Depth ranges have been compiled over time from various sources. They are indicative only and should not be relied upon for navigation.
 Design water depths of Shell Cove Boat Harbour range between 4 to 5 metres, but have not been verified by hydrographic survey by Transport for NSW.

- Aids to Navigation**
 - Port Pile - Beacon with TM
 - Starboard Pile - Beacon with TM
 - Sectored beacon - white red green
- Sector Light Alignment** (Light Range 6 nautical mile)
 - (W) - White light
 - (R) - Red light
 - (G) - Green light
- Depth Area**
 - 0-2 metres
 - 2-5 metres
 - 5-10 metres

- Facilities & Restrictions**
 - Formed Surface Launching Ramp
 - Marina Boatshed - or Boat Hire
 - Public Wharf, Jetty or Landing
 - Four Knot Speed Limit Area
 - Minimise Wash Area
 - 4 Knot Zone
 - Minimise Wash Area

Aerial Image © Nearmap
 Date: 31st December 2021



Plan compiled from information held in the Maritime Survey and Spatial Information Units.
 Coordinate System: GDA 1994 MGA Zone 56

NSW **Transport for NSW**

Scale at A3 sheet 1:3,000

CUSTOM PLAN
 LGA: SHELLHARBOUR
 Locality: SHELL COVE BOAT HARBOUR
Plan of Shell Cove Boat Harbour SHELL COVE
 Date Produced: 24 January 2022
PLAN N^o: CP2022-17-A