

Project update – October 2022

Flood Recovery - Temporary accommodation sites Elrond Drive, Kingscliff

The Elrond Drive temporary accommodation site has been leased to host housing for local people who cannot return home because of flood damage.

Approximately 31 self-contained housing units will be home to up to 96 people.

Site works

- Site works have commenced and a staged handover to our appointed community housing provider is anticipated in early November, weather and site conditions permitting.
- In the last few weeks, you may have seen crews getting the site ready and installing building foundations. Different parts of the accommodation have also been delivered, ready to be installed.
- To enable temporary housing sites to be established as quick as possible, Resilience NSW has sought to extend approved construction hours at the site.
- Works will now occur **seven days per week, from 7am to 10pm**. We are working to minimise disruption to nearby residents, and where possible will schedule works likely to cause significant noise to Monday to Friday 7am to 6pm and Saturday 8am to 1pm.
- Nightwork with crews, trucks and safety lighting will be in place for all nightwork. Safety barriers will be in place to keep everyone safe. Noise, dust and reversing beepers from construction and machinery will be minimised where possible.

Site management

- These housing units will be located at the site for up to two years, depending on housing needs.
- Recognising the importance of placing people as close to their original homes as possible, a prioritisation process will be used meaning that most people that

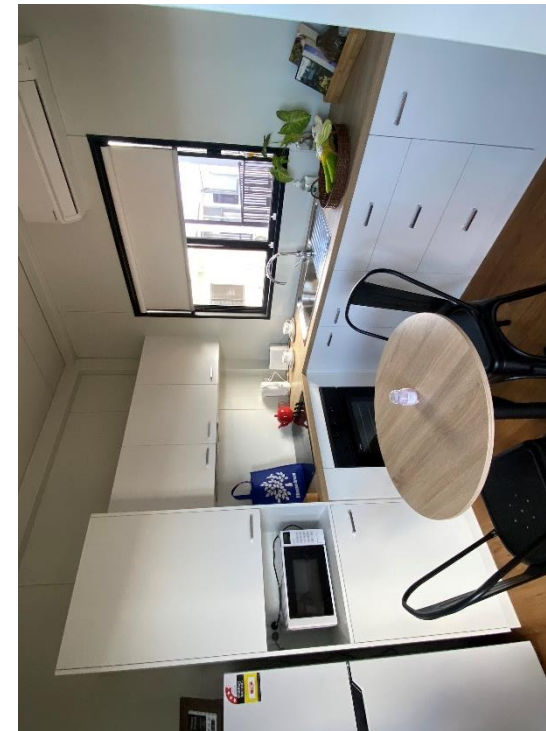
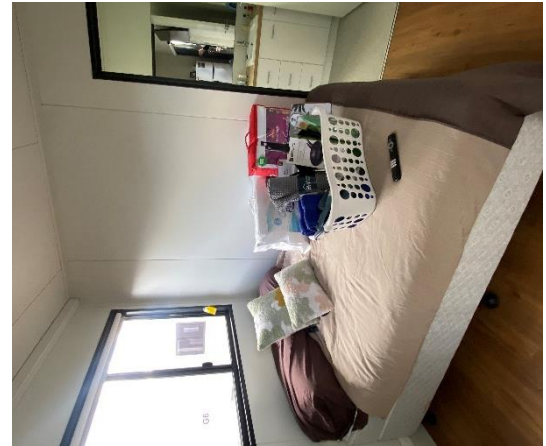
end up moving into the Kingscliff community will have lived in the Tweed Shire before, or very close to it.

- Our appointed community housing provider is responsible for resident allocations and day-to-day management of the site. All residents will an occupancy agreement before moving in, setting out appropriate behaviour and conduct for living in the temporary accommodation.
- The community housing provider also works closely with local Recovery Support Services (RSS) to provide the required support for residents, including mental and physical health, financial support and options for returning to a more permanent living situation.

Meet the project team

- We will host a drop-in session at the **Kingscliff Uniting Church Hall** (24 Kingscliff Street laneway) on:
 - **Tuesday 18 October, 2pm – 6pm**
- Feel free to drop by and ask us any questions or find out more information about the site. Our team members can also answer questions about the Pottsville site.
- You can also email **housingtaskforce@resilience.nsw.gov.au** or call **1300 003 227** to speak to a member of the project team at any time throughout the project. The latest information is available at www.nsw.gov.au/floods/recovery/temporary-housing

Temporary accommodation site – Elrond Drive, Kingscliff



Preliminary site layout is indicative and may change during construction.

Kitchen/dining and bedroom – Hutchinsons Modular Home. Pods may differ from site to site depending on supplier.